

12 SECTION 15 TOWN 07 RANGE

# ADAMS COUNTY

COUNTY CORNER NO: 53  
ROMPORTOL ID: 41507120000

## PUBLIC LAND SURVEY MONUMENT RECORD

TYPE OF MONUMENT: HARRISON  
ADAMS COUNTY COORDINATES, NAD 83 (2007)

N. 154035.042

E. 589001.429

ELEVATION- - - - DATUM - - - -

FIELD WORK DATE: 2/1/2017

### BASIS FOR MONUMENT LOCATION

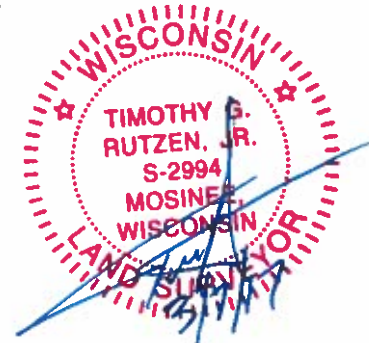
1974- PLS 417 DETERMINED A LOCATION BY COMPUTED COORDINATES FROM AN EXTENSIVE TRAVERSE CONNECTING ALL EXISTING MONUMENTS AND EVIDENCE IN ALL OF SECTIONS 12 AND 13. PROBED AND DUG, REPLACE A 2 INCH IRON PIPE WITH A 1 INCH IRON BAR INSIDE WITH A HARRISON.

2017 - PLS 2994 FOUND EXISTING HARRISON 3 INCHES BELOW THE SURFACE, NO EXISTING WITNESSES WERE FOUND. ACCEPTED THE HARRISON AND SET 4 NEW TIES.



LOCATION  
(INDICATE CORNER BY "X")

SEAL:

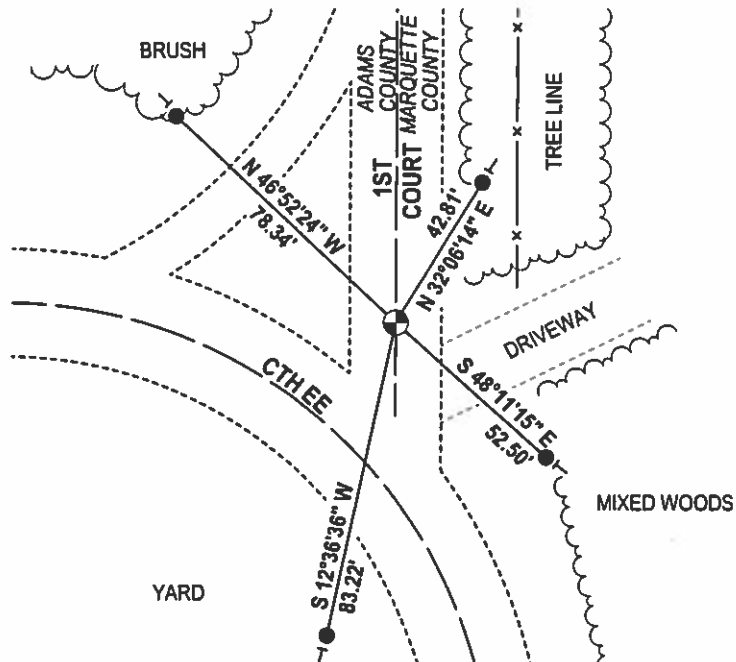
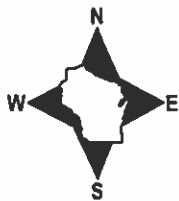


DATA SHOWN HERE ON THIS TIE SHEET IS CORRECT AND COMPLETE TO THE BEST OF MY KNOWLEDGE AND BELIEF.

PROFESSIONAL LAND SURVEYOR

DATE 3/7/17

### - TIE SKETCH



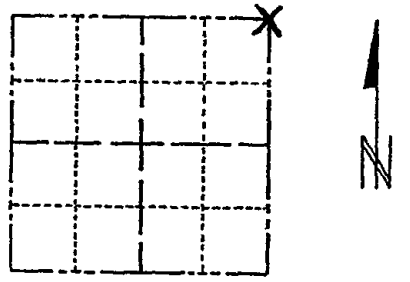
- 3/4" x 18" IRON REBAR SET, 1.50#/FT
- ⊕ FOUND HARRISON
- VINYL "T" POST

# ADAMS COUNTY

## Survey Monument Record

TYPE OF MONUMENT: HARRISON  
 STATE PLANE COORDINATES: N \_\_\_\_\_  
 E \_\_\_\_\_  
 ELEVATION — M.S.L. DATUM: \_\_\_\_\_  
 THETA ANGLE: \_\_\_\_\_  
 FIELD BOOK: Clip sheets PAGE \_\_\_\_\_

CORNER NO. 351  
 SECTION 13  
 TOWN 15N  
 RANGE 7E



LOCATION  
(Indicated by 'X')

### BASIS FOR MONUMENT LOCATION

(Use reverse side if necessary)

Show info such as: History of corner, with reference to Vol. and pg. dates, surveyor; exact description of monument replaced; if location computed, by taped or EDM traverse; landowner remarks, etc.

SEAL:



Location determined by computed coordinates from an extensive traverse connecting all existing monuments and evidence in all of sections 12 & 13. Replaced 2 inch iron pipe with 1 inch iron bar inside with Harrison monument. Probed and dug.

1 NEW TR 2-18-11 SS  
 CORNER O.K. 10-28-76 RN-SS

12-24-85 JERAL SMART 5-1739  
 4-1-91 ALL OK GR-JG  
 3-20-96 JG-SS 1 NEW TR  
 2-28-01 JG-SS - OK OK, 3-8-06-JG

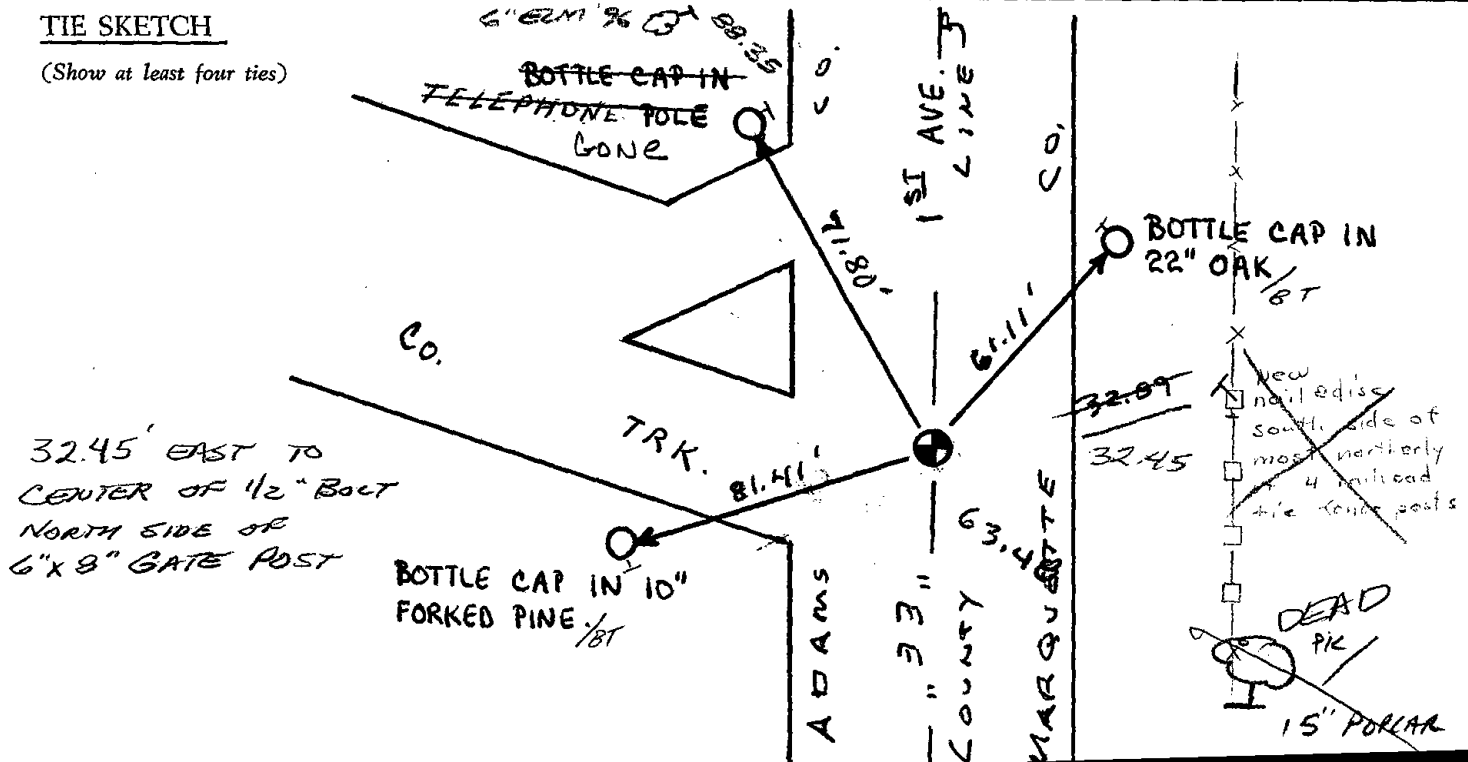
CERTIFIED CORRECT:

R. K. Saylor  
 Registered Land Surveyor

DATE: 1/15/14

### TIE SKETCH

(Show at least four ties)



MAINTENANCE RECORD

Date	Mil.	Remarks
9-15-81	LC-NJ	MONETIES O.K.