

15
SECTION

15
TOWN

07
RANGE

ADAMS COUNTY

COUNTY CORNER NO: 58

ROMPORTOL ID: 41507152000

PUBLIC LAND SURVEY MONUMENT RECORD

TYPE OF MONUMENT: HARRISON
ADAMS COUNTY COORDINATES, NAD 83 (2007)

N. 151409.363

E. 578328.482

ELEVATION- _____ DATUM _____

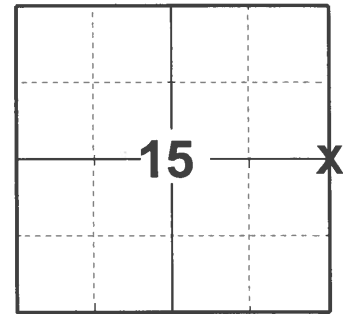
FIELD WORK DATE: 03/11/2021

BASIS FOR MONUMENT LOCATION

1979 - PLS 1321 RAN EDM/T16 TRAVERSE OF SECTION 15 TO DETERMINE SEARCH AREA. FOUND NO EVIDENCE OF MONUMENTATION OR RESURVEYS OF RECORD. SET HARRISON MONUMENT ON LINE AND EQUIDISTANT BETWEEN SECTION CORNERS.

1999 - PLS 2281 FOUND HARRISON MONUMENT, TIED OFF BEFORE COUNTY CONSTRUCTION PROJECT AND RESET AFTER COMPLETION OF CTH "G" RECONSTRUCTION.

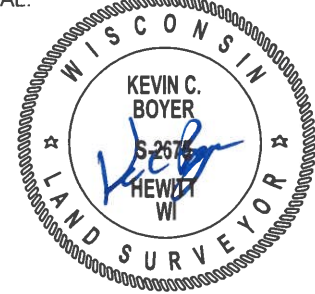
2021 - PLS 2675 FOUND HARRISON MONUMENT 6" BELOW PAVED SHOULDER SURFACE AND 4 TIES. MONUMENT AGREES WITH ALL 4 TIES. ACCEPTED HARRISON MONUMENT AS THE CORNER LOCATION AND MEASURED TO THE EXISTING TIES.



LOCATION

(INDICATE CORNER BY "X")

SEAL:



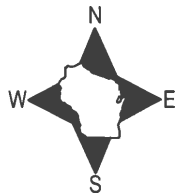
DATA SHOWN HERE ON THIS TIE SHEET IS CORRECT AND COMPLETE TO THE BEST OF MY KNOWLEDGE AND BELIEF.

PROFESSIONAL LAND SURVEYOR

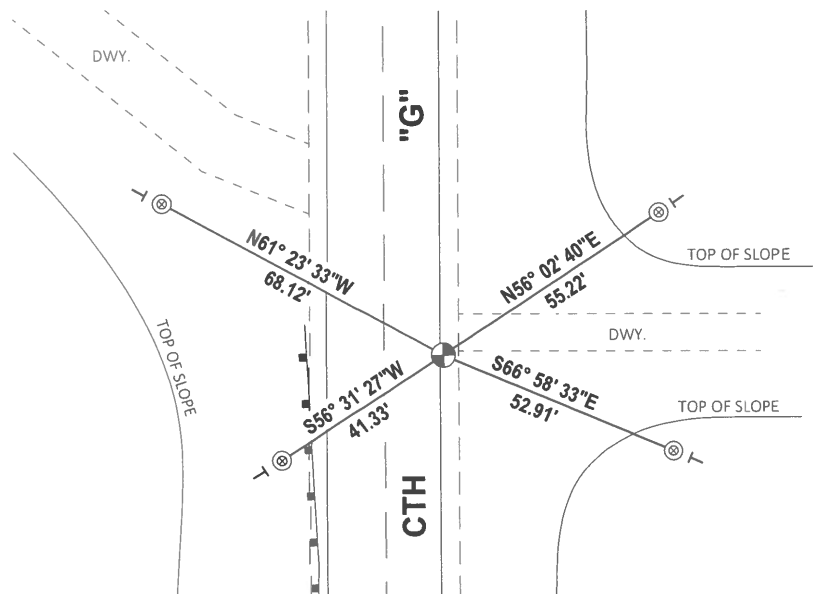
DATE 5/19/21

TIE SKETCH

NOTE: CORNER LANDS 12± EAST OF THE CENTERLINE OF CTH "G".



- ⊗ FOUND 1-1/2" O.D. IRON PIPE
- ⊙ FOUND HARRISON MONUMENT
- VINYL "T" POST



Government Land Corner Certificate

Adams County

TYPE OF MONUMENT: 30" Harrison Mon.

STATE PLANE COORDINATES: N _____
E _____

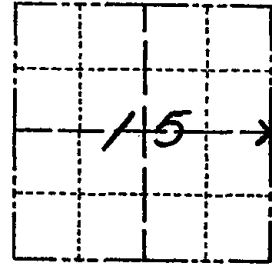
ELEVATION — M.S.L. DATUM: _____

THETA ANGLE: _____

FIELD BOOK: _____ PAGE _____

DRAWN BY: _____

CORNER NO. 58
SECTION 15
TOWN 15
RANGE 7



LOCATION
(Indicated by 'X')

BASIS FOR MONUMENT LOCATION

Show info such as: History of corner, with reference to Vol. and pg., dates, surveyor; exact description of monument replaced; if location computed, by taped or EDM traverse; landowner remarks, etc. (Use reverse side if necessary)

Ran EDM/T16 Traverse of Section 5, T15N, R6E.

Could not find any evidence of monumentation of resurveys of record. Set corner on line equidistant between section corners.

Set Harrison December 12, 1979.

SEAL:

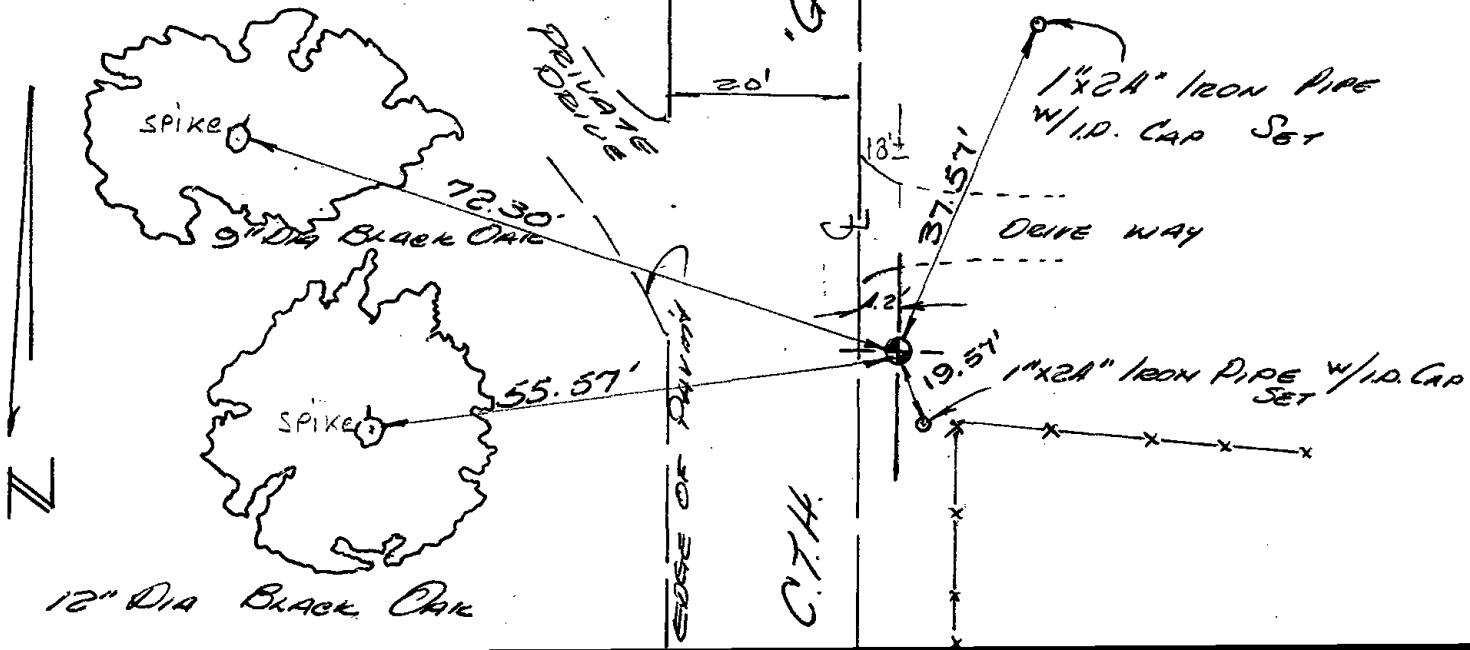


DATA SHOWN HERE ON
CERTIFIED CORRECT:

James R. Grothman
Registered Land Surveyor
DATE: DEC. 17, 1979

TIE SKETCH

Show at least four ties, also fence lines, roads, topo, size and type of witness trees and if off road - best way to arrive at corner.



NOTE: ALL TIES TO TREES
ARE TO PK NAILS

