

14
SECTION

15
TOWN

07
RANGE

ADAMS COUNTY

COUNTY CORNER NO: 59

ROMPORTOL ID: 41507142000

PUBLIC LAND SURVEY MONUMENT RECORD

TYPE OF MONUMENT: HARRISON
ADAMS COUNTY COORDINATES, NAD 83 (2007)

N. 151431.037

E. 583662.722

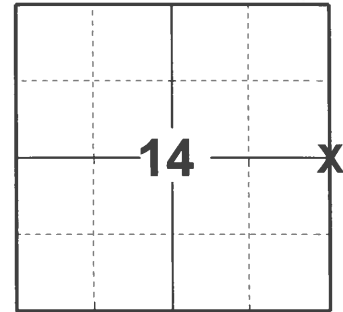
ELEVATION- _____ DATUM _____

FIELD WORK DATE: 03/10/2021

BASIS FOR MONUMENT LOCATION

1974 - PLS 417 FOUND NO EXISTING EVIDENCE OF CORNER LOCATION. SET HARRISON MONUMENT ON LINE EQUIDISTANT BETWEEN SECTION CORNERS ON BASIS OF COMPUTED COORDINATES.

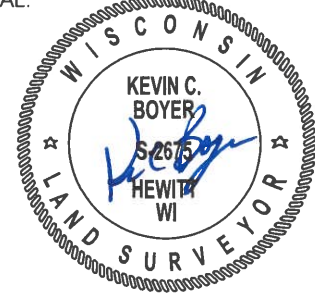
2021 - PLS 2675 FOUND HARRISON MONUMENT 6" BELOW ROAD SURFACE AND 1 WITNESS. MONUMENT AGREES WITH THE WITNESS. ACCEPTED THE HARRISON MONUMENT AS CORNER LOCATION. SET 3 NEW TIES AND MEASURED TO A FOUND PROPERTY IRON AND WITNESS.



LOCATION

(INDICATE CORNER BY "X")

SEAL:



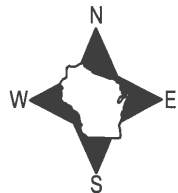
DATA SHOWN HERE ON THIS TIE SHEET IS CORRECT AND COMPLETE TO THE BEST OF MY KNOWLEDGE AND BELIEF.

PROFESSIONAL LAND SURVEYOR

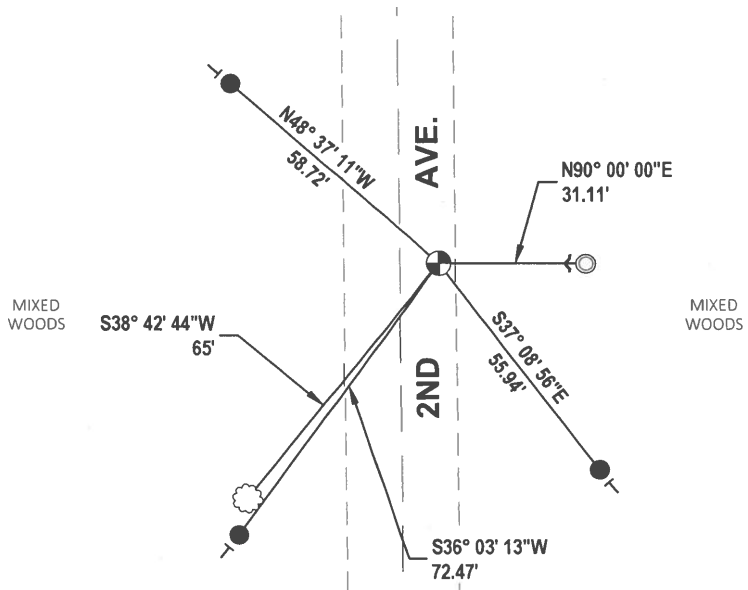
DATE 5/19/21

TIE SKETCH

NOTE: CORNER LANDS 8.5'± EAST OF THE CENTERLINE OF 2ND AVE.



- SET 3/4" x 18" IRON REBAR, 1.50#/FT
- FOUND 1-1/4" O.D. IRON PIPE
- ⊕ FOUND HARRISON MONUMENT
- ┌ STEEL FENCE POST
- └ VINYL "T" POST
- ☼ WITNESS TREE



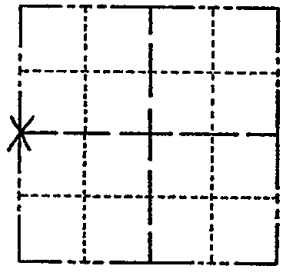
ADAMS COUNTY

Survey Monument Record

TYPE OF MONUMENT: HARRISON
STATE PLANE COORDINATES: N _____
E _____

ELEVATION — M.S.L. DATUM: _____
THETA ANGLE: _____
FIELD BOOK: Check sheets PAGE _____

CORNER NO. 354
SECTION 13
TOWN 15N
RANGE 7E



LOCATION
(Indicated by 'X')

SEAL:

BASIS FOR MONUMENT LOCATION

(Use reverse side if necessary)

Show info such as: History of corner, with reference to Vol. and pg, dates, surveyor; exact description of monument replaced; if location computed, by taped or EDM traverse; landowner remarks, etc.

Set on line equidistant between Sec. corners on basis of computed coordinates.

No fence lines or other evidence found.

CORNER O.K. 10-28-76 RN-SS
" " 5-8-91 JG-SS

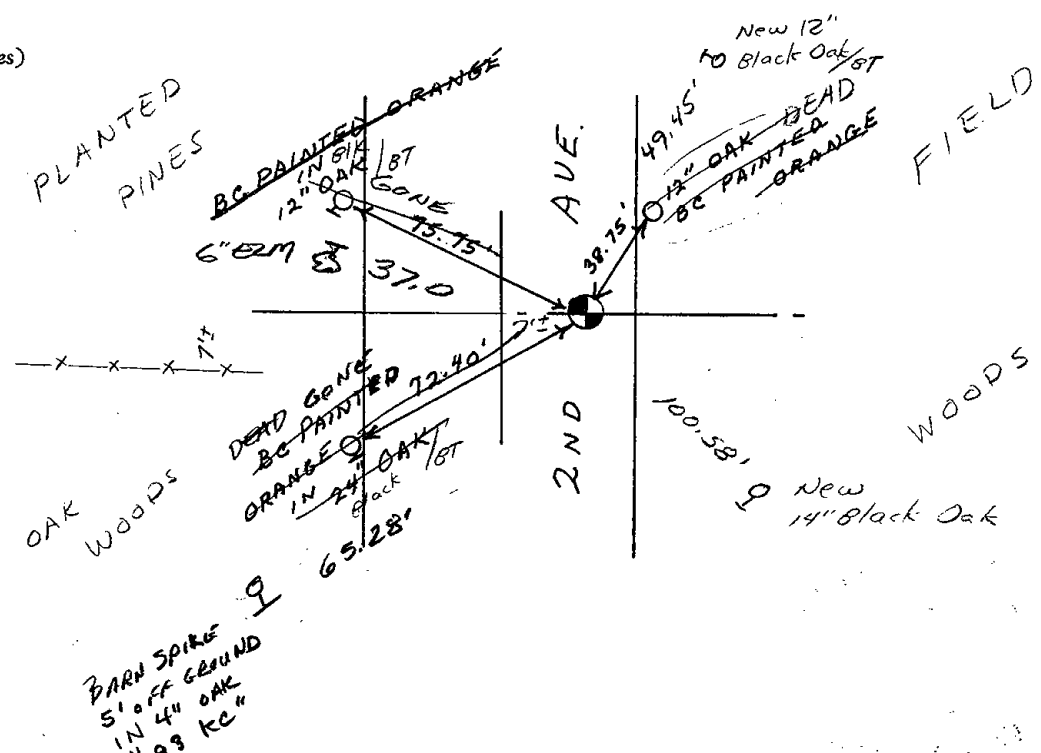


CERTIFIED CORRECT:

R. K. Saylor
Registered Land Surveyor
DATE: October 1, 1974

TIE SKETCH

(Show at least four ties)



MAINTENANCE RECORD

Date	Inh.	Remarks
12-30-81	TH-NS	TIES & MON O.K
2-3-86	GR-SS	"
3-2-01	M-MA	ALL OK
8-7-06	JG	OK
2-18-11	SS	1 NEW TIE

ADAMS COUNTY

Survey Monument Record

TYPE OF MONUMENT: HARETSON

STATE PLANE COORDINATES: N _____ E _____

ELEVATION — M.S.L. DATUM: _____

THETA ANGLE: _____

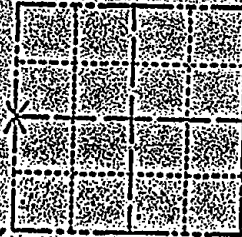
FIELD BOOK: Check sheets PAGE _____

CORNER NO. 350

SECTION 13

TOWN 15N

RANGE 7E



LOCATION
(Indicated by 'X')

SEAL



BASIS FOR MONUMENT LOCATION

(Use reverse side if necessary)

Show info such as: History of corner, with reference to Vol. and pg. dates, surveyor; exact description of monument replaced; if location computed, by taped or EDM traverse; landowner remarks, etc.

Set on line equidistant between Sec. corners on basis of computed coordinates.

No fence lines or other evidence found.

CORNER OK 1225-76 RUS

CERTIFIED CORRECT:

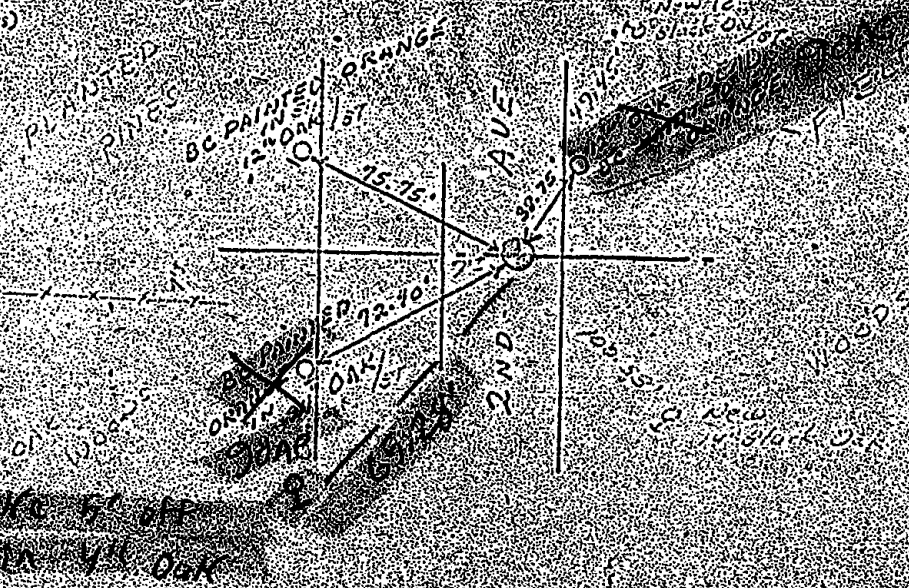
W. H. SAWLER

Registered Land Surveyor

DATE: October 1, 1974

TIE SKETCH

(Show at least four ties)



Iron spike 50' up
Nail in 4\"/>