

U.S. PUBLIC LAND SURVEY MONUMENT RECORD

ADAMS COUNTY

Land Surveying
Landscape Architecture
Engineering
Jordan G. Brost, PLS #3009
4941 Kirschling Court
Stevens Point, WI 54481
715.344.9999(Ph) 715.344.9922(Fx)

This record shall show the location of the corner and shall include all of the following nine elements (a through i)

TYPE OF MONUMENT: BERNTSEN SURVEY MARKER NAIL

ADAMS COUNTY COORDINATES: N: 148773.479
E: 565233.198

ELEVATION: -M.S.L. DATUM _____

ELLIP. HEIGHT: _____

LATITUDE: _____

LONGITUDE: _____

- FOUND
- SET
- RE-SET
- RE-TIED

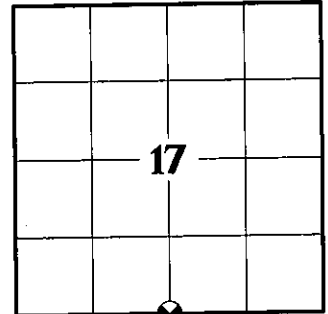
ORDER OF ACCURACY:

- FIRST _____
- SECOND _____
- THIRD X
- FOURTH _____
- UNKNOWN _____
- OTHER _____

REFERENCE DATUM: NAD 83 (2011)

(a) Identify the corner by reference to the U.S. public land survey system.

CORNER NO. 64
ROMPORTOL ID: 41507170020
SECTION 17
TOWNSHIP 15 NORTH
RANGE 07 EAST



SECTION IDENTIFICATION

(b) Describe any record evidence, monument evidence, occupational evidence, testimonial evidence, or any other material evidence considered by the professional land surveyor, and whether the monument was found or placed

ANTHONY J. ALT, PLS 2038 FOUND A HARRISON MONUMENT AND TIED PRIOR TO RECONSTRUCTION OF HWY "82". HE FOUND EXISTING REFERENCE TIES, DISC SET IN CONCRETE STATING "WISCONSIN DEPT. OF TRANSPORTATION, DO NOT DISTURB". PER PREVIOUS TIE SHEET DATED JULY 6, 2015.

KEVIN C. BOYER, PLS 2675 FOUND NO MONUMENT DUE TO HIGHWAY CONSTRUCTION BUT FOUND 4 TIES. HE CALCULATED POSITION BY DISTANCE - DISTANCE INTERSECTION FROM THE NORTHWEST, NORTHEAST, SOUTHEAST AND SOUTHWEST TIES AND AVERAGED THE SOLUTIONS. HE ACCEPTED THE CALCULATED POSITION AS THE CORNER LOCATION. NO MONUMENT WAS SET AT THE TIME OF SURVEY. MEASURED TO A FOUND PROPERTY IRON. PER PREVIOUS TIE SHEET DATED MAY 19, 2021.

ON JULY 22, 2020, I FOUND A BERNTSEN SURVEY MARKER NAIL AT THE CORNER LOCATION AND FOUR EXISTING WITNESS MONUMENTS AS SHOWN ON PREVIOUS TIE SHEET DATED JULY 6, 2015. EXISTING MONUMENT CHECKED WELL WITH WITNESS MONUMENTS AND WAS ACCEPTED AS THE CORNER LOCATION. MONUMENT AND WITNESSES WERE TIED BEFORE RECONSTRUCTION OF STATE HWY "82".

ON MAY 20, 2021, AFTER CONSTRUCTION WAS COMPLETE, I SET A BERNTSEN SURVEY NAIL IN CONCRETE AT THE PREVIOUS SURVEYED LOCATION AND VERIFIED ALL WITNESS MONUMENTS AS PREVIOUSLY FOUND, WHICH WERE IN GOOD CONDITION.

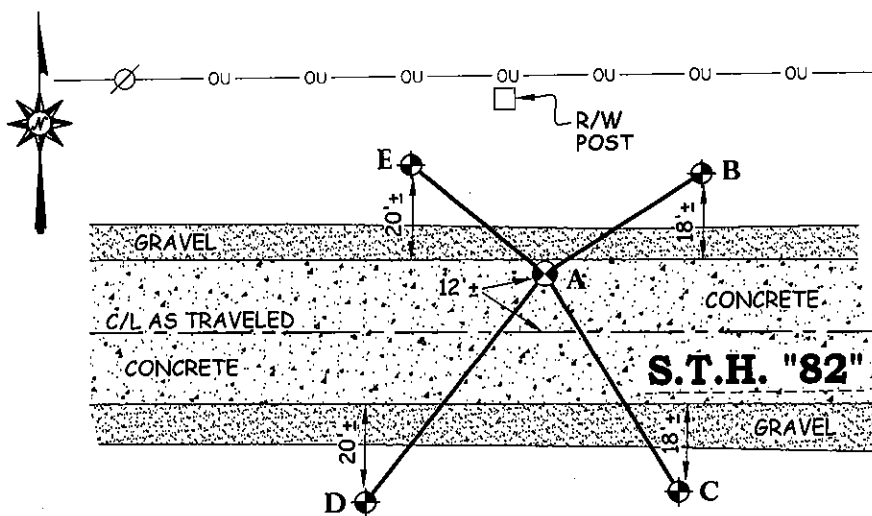
(c) In the plan view drawing below, provide reference ties to at least 4 witness monuments. Witness monuments shall be concrete, natural stone, iron, bearing trees or other equally durable material, except wood other than bearing trees.

(d) Show a plan view drawing depicting the relevant monuments and reference ties which is sufficient in detail to enable accurate relocation of the corner monument if the corner monument is disturbed.

**DRAFTED BY JORDAN G. BROST
DRAWN BY TRAVIS PLANTICO**

TIE SKETCH:

(SCALE: 1"=40')



LEGEND AND NOTES:

- SET BERNTSEN SURVEY MARKER NAIL
- DOT ALUMINUM CAP MONUMENT IN CONCRETE FOUND
- OVERHEAD UTILITIES LINE
- POWER POLE

A-B	(N 57°31'04" E)	(38.63')
	N 57°47'52" E	38.67'
A-C	(S 30°56'34" E)	(53.24')
	S 30°58'50" E	53.43'
A-D	(S 38°42'05" W)	(60.41')
	S 38°33'19" W	60.42'
A-E	(N 50°05'20" W)	(36.24')
	N 50°04'09" W	36.06'

COORDINATES ARE REFERENCED TO THE ADAMS COUNTY COORDINATE SYSTEM AS DEVELOPED BY THE WISCONSIN DEPARTMENT OF TRANSPORTATION.

U.S. PUBLIC LAND SURVEY MONUMENT RECORD
ADAMS COUNTY



Land Surveying
Landscape Architecture
Engineering
Jordan G. Brost, PLS #3009
4941 Kirschling Court
Stevens Point, WI 54481
715.344.9999(Ph) 715.344.9922(Fx)

(e) A description of any material discrepancy between the location of the corner monument as restored and the monument location of that corner as previously established.

(a) Identify the corner by reference to the U.S. public land survey system.

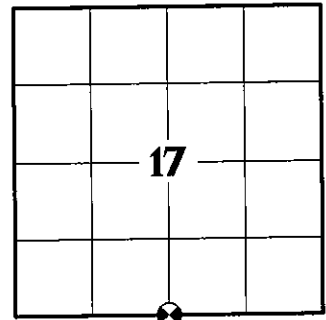
CORNER NO. 64
ROMPORTOL ID: 41507170020
SECTION 17
TOWNSHIP 15 NORTH
RANGE 07 EAST

(f) Was the corner restored through acceptance of (1) an obliterated evidence location, or (2) a found perpetuated location.

FOUND PERPETUATED LOCATION

(g & h) Was the corner reestablished through lost corner proportionate methods? If so, show the method, including the directions and distances to other public land survey corners used as evidence or used for proportioning in determining the corner location.

NO



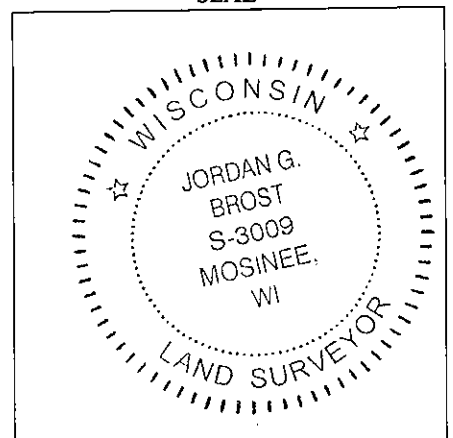
SECTION IDENTIFICATION

(i) I, Jordan G. Brost, hereby certify that the corner location shown on this record was determined by me or under my direction and control and that this U.S. Public Land Survey Monument Record is correct and complete to the best of my knowledge and belief.

Jordan G. Brost, PLS # 3009

Oct. 11, 2021
Date

SEAL



17
SECTION

15
TOWN

07
RANGE

ADAMS COUNTY

COUNTY CORNER NO: 64

ROMPORTOL ID: 41507170020

PUBLIC LAND SURVEY MONUMENT RECORD

TYPE OF MONUMENT: CALCULATED POSITION
ADAMS COUNTY COORDINATES, NAD 83 (2007)

N. 148773.408

E. 565233.268

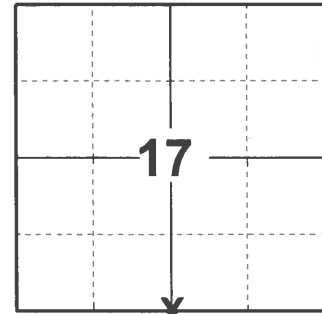
ELEVATION- DATUM

FIELD WORK DATE: 04/01/2021

BASIS FOR MONUMENT LOCATION

2015 - PLS 2038 FOUND HARRISON MONUMENT AND SET 4 TIES PRIOR TO HIGHWAY CONSTRUCTION PROJECT.

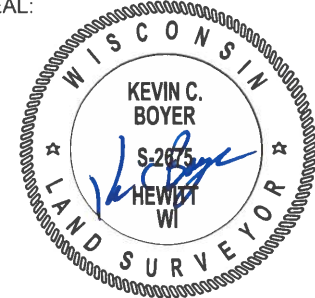
2021 - PLS 2675 FOUND NO MONUMENT DUE TO HIGHWAY CONSTRUCTION BUT FOUND 4 TIES. CALCULATED POSITION BY DISTANCE - DISTANCE INTERSECTION FROM THE NORTHWEST, NORTHEAST, SOUTHEAST AND SOUTHWEST TIES AND AVERAGED THE SOLUTIONS. ACCEPTED THE CALCULATED POSITION AS THE CORNER LOCATION. NO MONUMENT WAS SET AT THE TIME OF SURVEY. MEASURED TO A FOUND PROPERTY IRON.



LOCATION

(INDICATE CORNER BY "X")

SEAL:



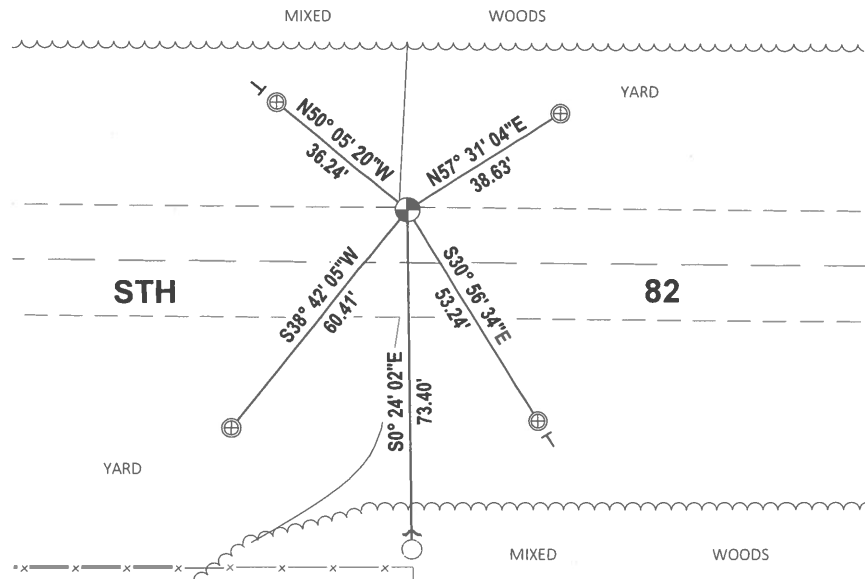
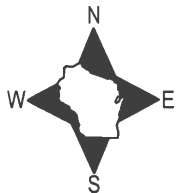
DATA SHOWN HERE ON THIS TIE SHEET IS CORRECT AND COMPLETE TO THE BEST OF MY KNOWLEDGE AND BELIEF.

PROFESSIONAL LAND SURVEYOR

DATE 5/19/21

TIE SKETCH

NOTE: CORNER LANDS 12'± SOUTH OF THE CENTERLINE OF STH 82.

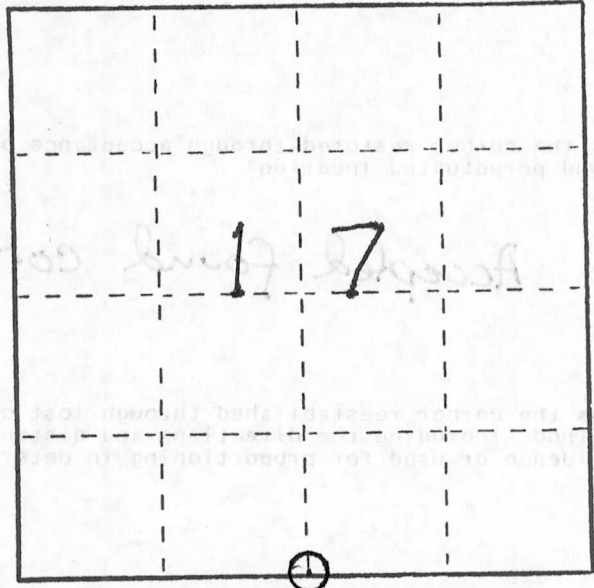


- FOUND 3/4" IRON ROD
- ⊕ FOUND WISDOT ALUMINUM CAP IN CONCRETE
- ⊙ CALCULATED CORNER POSITION
- ↗ STEEL FENCE POST
- ┊ VINYL "T" POST

U. S. PUBLIC LAND SURVEY MONUMENT RECORD

INSTRUCTIONS: This record shall show the location of the corner and shall include all of the following nine elements (a through i).

- (a) Identify the corner by reference to the U.S. public land survey system.
 O = Corner monument restored.



WISDOT # 1430-01-75
 493+64.73

T15N, R7E

Adams County, WI

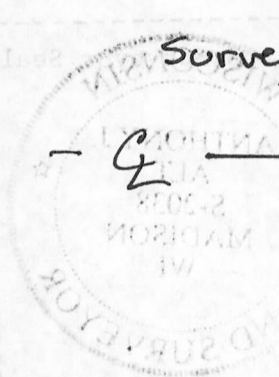
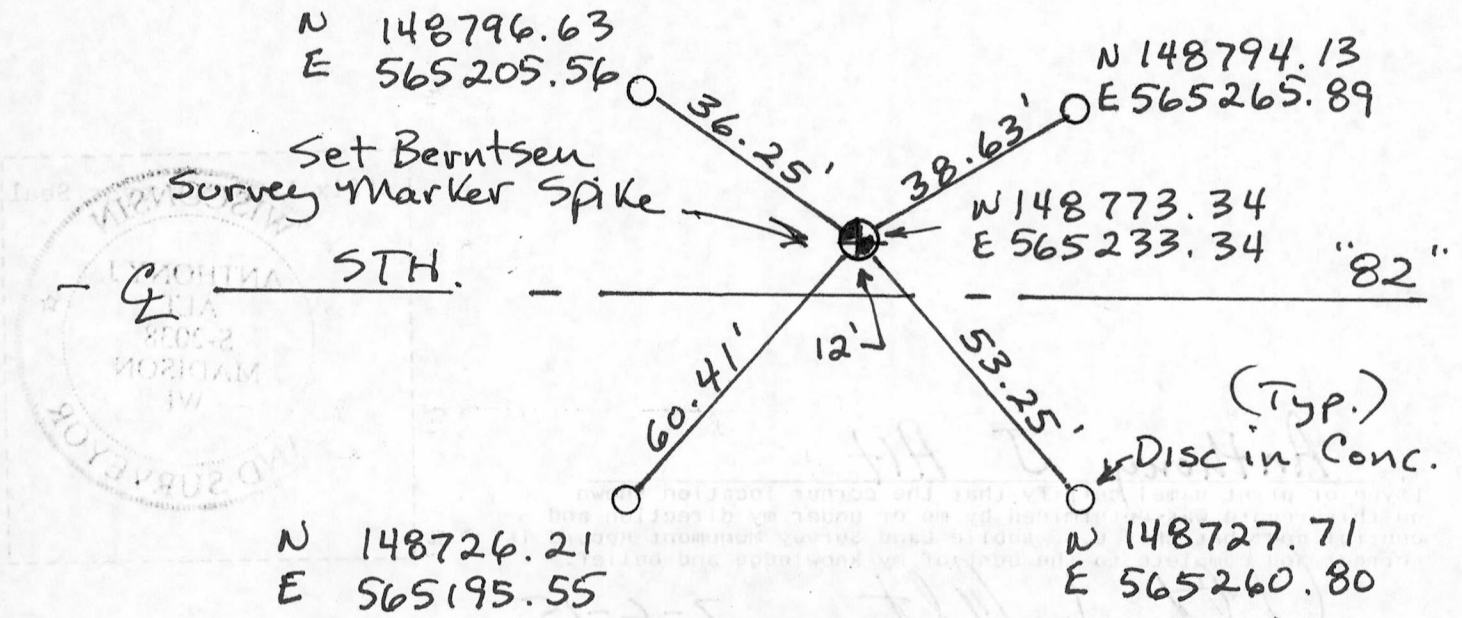
- (b) Describe any record evidence, monument evidence, occupational evidence, testimonial evidence or any other material evidence you considered, and whether the monument was found or placed.

I found a Harrison monument and tied prior to reconstruction of STH "82"
 I found the existing ties. Disc set in concrete stating "Wisconsin Department of Transportation, Do not Disturb"

- (c) In the plan view drawing below, provide reference ties to at least 4 witness monuments, or, if the location is within a municipality, to at least 2 witness monuments. (Witness monuments shall be made of concrete, natural stone, iron or other equally durable material.)
 Describe witness monuments.

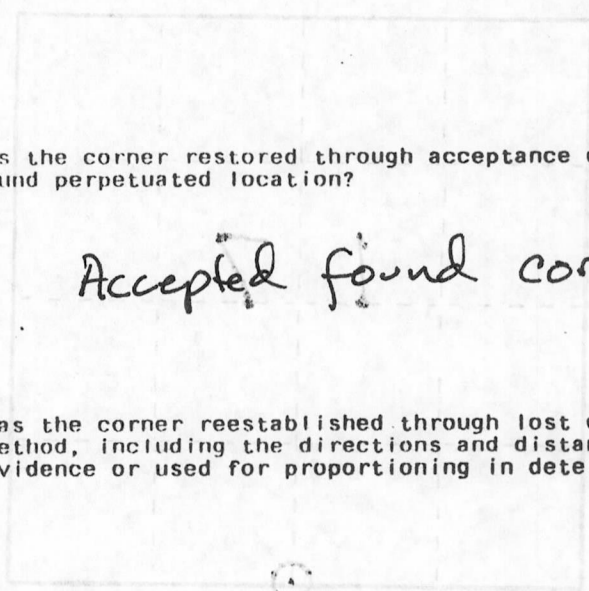
- (d) Show a plan view drawing depicting the relevant monuments and reference ties which is sufficient in detail to enable accurate relocation of the corner monument if the corner monument is disturbed. Indicate north.

Adams County
 Coordinate System
 NAD 1983 (2011)



(e) Describe any material discrepancy between the location of the corner as restored or reestablished and the location of that corner as previously restored or reestablished by distance and direction. Show the discrepancy on the plan view drawing under (d), above. Show the distances between the corner as previously restored or reestablished and (1) the corner as restored or reestablished, and (2) to at least 2 of the witness monuments shown on the drawing in (d), above.

No discrepancy



(f) Was the corner restored through acceptance of (1) an obliterated evidence location, or, (2) a found perpetuated location?

Accepted found corner

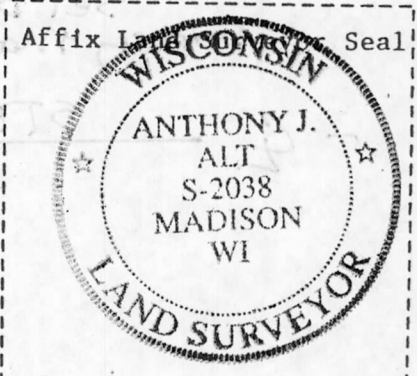
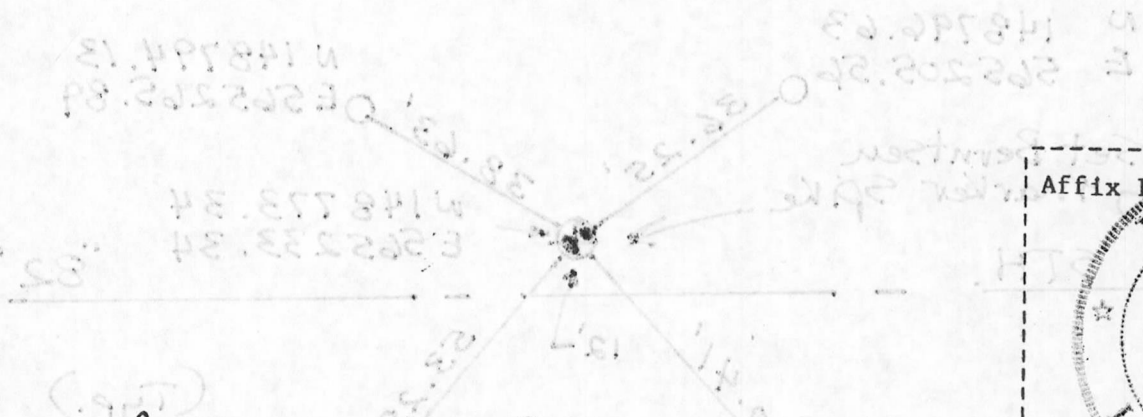
(g&h) Was the corner reestablished through lost corner proportionate methods? If so, show the method, including the directions and distances to other public land survey corners used as evidence or used for proportioning in determining the corner location?

I found a Harrison monument and tied prior to reconstruction of 211' 53". I found the existing ties. Disc set in concrete stating "Wisconsin Department of Transportation Do not Disturb".

WISCONSIN
ADAMS COUNTY, WI
TIER 1, R 7E
793+64.73
WISDOT # 1489-01-72



Coordinate System
NAD 1983 (2011)
Adams County



(i) I, Anthony J Alt
(Type or print name) certify that the corner location shown on this record was determined by me or under my direction and control, and that this U.S. Public Land Survey Monument Record is correct and complete to the best of my knowledge and belief.

Anthony J Alt
Signature

7-6-15
Date