

U.S. PUBLIC LAND SURVEY MONUMENT RECORD

ADAMS COUNTY


 Land Surveying
 Landscape Architecture
 Engineering
Jordan G. Brost, PLS #3009
 4941 Kirsching Court
 Stevens Point, WI 54481
 715.344.9999 (Ph) 715.344.9922 (Fax)

This record shall show the location of the corner and shall include all of the following nine elements (a through i)

TYPE OF MONUMENT: BERNTSEN SURVEY MARKER NAIL

ADAMS COUNTY COORDINATES: N: 148768.317

E: 575683.418

ELEVATION: -M.S.L. DATUM _____

ELLIP. HEIGHT: _____

LATITUDE: _____

LONGITUDE: _____

- FOUND
- SET
- RE-SET
- RE-TIED

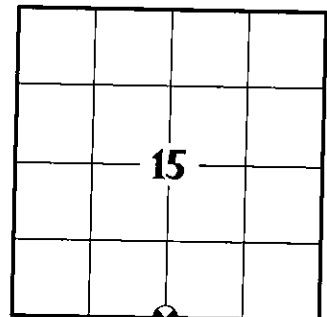
ORDER OF ACCURACY:

- FIRST _____
- SECOND _____
- THIRD X
- FOURTH _____
- UNKNOWN _____
- OTHER _____

REFERENCE DATUM: NAD 83 (2011)

(a) Identify the corner by reference to the U.S. public land survey system.

CORNER NO. 68
 ROMPORTOL ID: 41507150020
 SECTION 15
 TOWNSHIP 15 NORTH
 RANGE 07 EAST



SECTION IDENTIFICATION

(b) Describe any record evidence, monument evidence, occupational evidence, testimonial evidence, or any other material evidence considered by the professional land surveyor, and whether the monument was found or placed

GEGORY P. RHINEHART, PLS 1478 SET CORNER OPPOSITE FENCE TO THE NORTH AND ON LINE BETWEEN ADJACENT SECTION CORNERS. THIS LOCATION FITS POSSESSION AND FENCES TO THE EAST AND WEST QUITE WELL. THIS LOCATION DOES NOT REFLECT THE SPLIT BY A.J. BARRETT AS RECORDED IN FIELD BOOK 2 PAGE 200, APRIL 6, 1898. PER PREVIOUS TIE SHEET DATED JULY 3, 1979.

ERNEST WOORSTER, PLS 1741 LOCATED MONUMENT AND TIED PRIOR TO RECONSTRUCTION OF THE HIGHWAY. NEW TIES PROVIDED. TIES ARE AL. DISC SET IN CONCRETE. DISC STATES WISCONSIN DEPT. OF TRANSPORTATION DO NOT DISTURB. PER PREVIOUS TIE SHEET DATED ON NOVEMBER 15, 2001.

KEVIN C. BOYER, PLS 2675 FOUND NO MONUMENT DUE TO HIGHWAY CONSTRUCTION BUT FOUND 5 TIES. HE CALCULATED POSITION BY DISTANCE - DISTANCE INTERSECTION FROM THE NORTHWEST, NORTHEAST AND SOUTHEAST TIES (SOUTHWEST TIE DID NOT FIT). HE AVERAGED BOTH SOLUTIONS AND THE CALCULATED POSITION AGREES WITH THE NORTH IRON PIPE. HE ACCEPTED CALCULATED POSITION FOR THE CORNER LOCATION. NO MONUMENT WAS SET AT TIME OF SURVEY. PER PREVIOUS TIE SHEET DATED ON MAY 19, 2021.

ON JULY 22, 2020, I FOUND HARRISON MONUMENT AT THE CORNER LOCATION AND FOUR EXISTING WITNESS MONUMENTS AS SHOWN ON PREVIOUS TIE SHEET BY E. WOORSTER DATED NOV. 1, 2015. EXISTING MONUMENT CHECKED WELL WITH WITNESS MONUMENTS AND WAS ACCEPTED AS THE CORNER LOCATION. MONUMENT AND WITNESSES WERE TIED BEFORE RECONSTRUCTION OF STATE HWY "82".

ON MAY 20, 2021, AFTER CONSTRUCTION WAS COMPLETE, I SET A BERNTSEN SURVEY NAIL IN CONCRETE AT THE PREVIOUS SURVEYED LOCATION AND VERIFIED WITNESS MONUMENTS AS PREVIOUSLY FOUND, WHICH WERE IN GOOD CONDITION.

(c) In the plan view drawing below, provide reference ties to at least 4 witness monuments. Witness monuments shall be concrete, natural stone, iron, bearing trees or other equally durable material, except wood other than bearing trees.

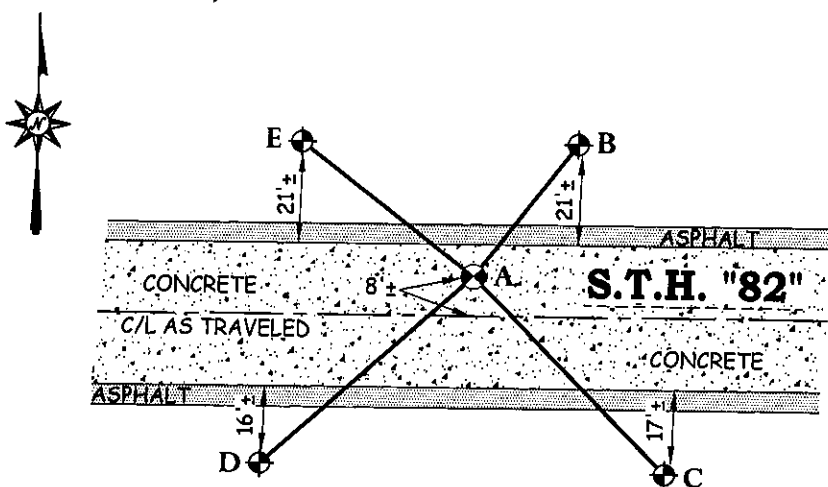
(d) Show a plan view drawing depicting the relevant monuments and reference ties which is sufficient in detail to enable accurate relocation of the corner monument if the corner monument is disturbed.



TIE SKETCH:

(SCALE: 1"=40')

DRAFTED BY JORDAN G. BROST
 DRAWN BY TRAVIS PLANTICO

LEGEND AND NOTES:



-  SET BERNTSEN SURVEY MARKER NAIL
-  DOT ALUMINUM CAP MONUMENT IN CONCRETE FOUND

A-B	(N 37°10'03" E)	(35.12')
	N 37°21'40"E	35.13'
A-C	(S 44°48'18" E)	(57.30')
	S 44°49'13"E	57.49'
A-D	(S 47°55'15" W)	(58.98')
	S 47°47'56"W	58.99'
A-E	(N 52°30'44" W)	(45.76')
	N 52°32'51"W	45.66'

COORDINATES ARE REFERENCED TO THE ADAMS COUNTY COORDINATE SYSTEM AS DEVELOPED BY THE WISCONSIN DEPARTMENT OF TRANSPORTATION.

U.S. PUBLIC LAND SURVEY MONUMENT RECORD
ADAMS COUNTY



Land Surveying
 Landscape Architecture
 Engineering
Jordan G. Brost, PLS #3009
 4941 Kirschling Court
 Stevens Point, WI 54481
 715.344.9999[Ph] 715.344.9922[Fax]

(e) A description of any material discrepancy between the location of the corner monument as restored and the monument location of that corner as previously established.

(a) Identify the corner by reference to the U.S. public land survey system.

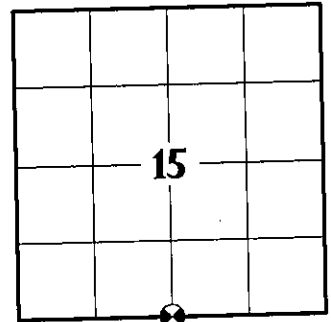
CORNER NO. 68
 ROMPORTOL ID: 41507150020
 SECTION 15
 TOWNSHIP 15 NORTH
 RANGE 07 EAST

(f) Was the corner restored through acceptance of (1) an obliterated evidence location, or (2) a found perpetuated location.

FOUND PERPETUATED LOCATION

(g & h) Was the corner reestablished through lost corner proportionate methods? If so, show the method, including the directions and distances to other public land survey corners used as evidence or used for proportioning in determining the corner location.

NO



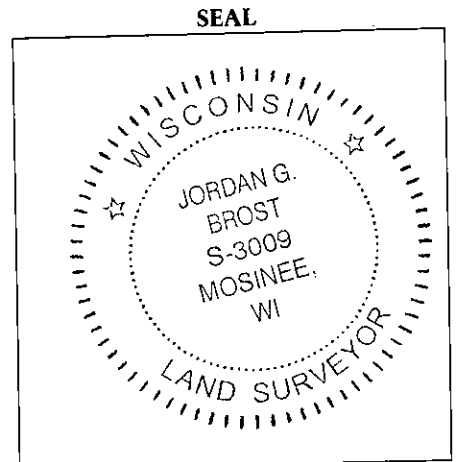
SECTION IDENTIFICATION

(i) I, *Jordan G. Brost*, hereby certify that the corner location shown on this record was determined by me or under my direction and control and that this U.S. Public Land Survey Monument Record is correct and complete to the best of my knowledge and belief.

Jordan G. Brost, PLS # 3009

Oct. 11, 2021

Date



15
SECTION

15
TOWN

07
RANGE

ADAMS COUNTY

COUNTY CORNER NO: 68

ROMPORTOL ID: 41507150020

PUBLIC LAND SURVEY MONUMENT RECORD

TYPE OF MONUMENT: CALCULATED POSITION
ADAMS COUNTY COORDINATES, NAD 83 (2007)

N. 148768.232

E. 575683.430

ELEVATION- _____ DATUM _____

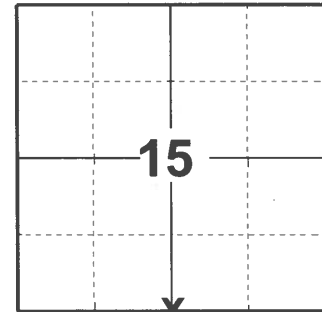
FIELD WORK DATE: 03/11/2021

BASIS FOR MONUMENT LOCATION

1979 - PLS 1478 SET HARRISON MONUMENT OPPOSITE FENCE TO THE NORTH AND ON LINE BETWEEN ADJACENT SECTION CORNERS. CORNER FITS POSSESSION AND FENCES TO THE EAST AND WEST WELL. CORNER DOES NOT REFLECT SPLIT BY A.J. BARRETT AS RECORDED IN F.B. 2, PAGE 200 APRIL 6, 1898.

2001 - PLS 1741 FOUND MONUMENT AND SET 4 TIES PRIOR TO HIGHWAY CONSTRUCTION.

2021 - PLS 2675 FOUND NO MONUMENT DUE TO HIGHWAY CONSTRUCTION BUT FOUND 5 TIES. CALCULATED POSITION BY DISTANCE - DISTANCE INTERSECTION FROM NORTHWEST, NORTHEAST AND SOUTHEAST TIES (SOUTHWEST TIE DID NOT FIT). AVERAGED BOTH SOLUTIONS AND THE CALCULATED POSITION AGREES WITH THE NORTH IRON PIPE. ACCEPTED CALCULATED POSITION FOR THE CORNER LOCATION. NO MONUMENT WAS SET AT TIME OF SURVEY.



LOCATION

(INDICATE CORNER BY "X")

SEAL:



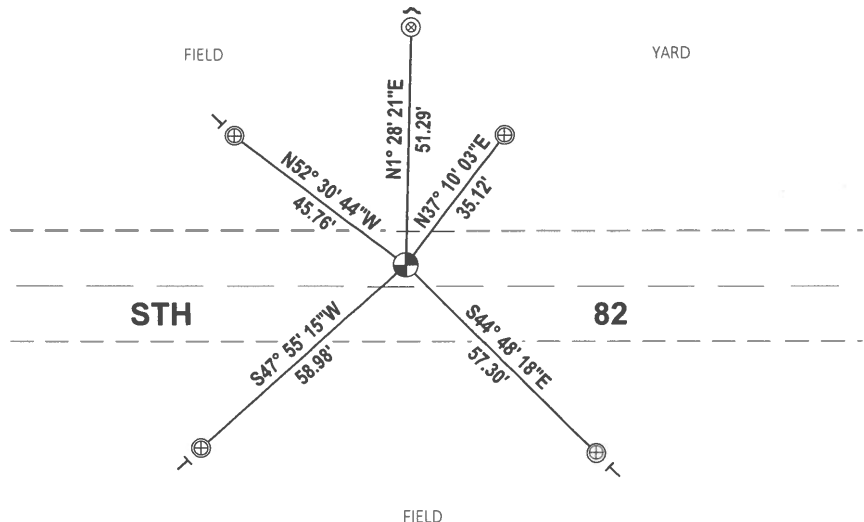
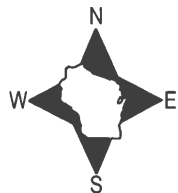
DATA SHOWN HERE ON THIS TIE SHEET IS CORRECT AND COMPLETE TO THE BEST OF MY KNOWLEDGE AND BELIEF.

PROFESSIONAL LAND SURVEYOR

DATE 5/19/21

TIE SKETCH

NOTE: CORNER LANDS 4.7'± NORTH OF THE CENTERLINE OF STH 82.



- ⊕ FOUND WISDOT ALUMINUM CAP IN CONCRETE
- ⊙ CALCULATED CORNER POSITION
- ↘ STEEL FENCE POST
- ┊ VINYL "T" POST
- ⊗ FOUND 1.5" OD PIPE

Government Land Corner Certificate

ADAMS County

TYPE OF MONUMENT: HARRISON

STATE PLANE COORDINATES: N _____

E _____

ELEVATION — M.S.L. DATUM: _____

THETA ANGLE: _____

FIELD BOOK: 76 PAGE 16

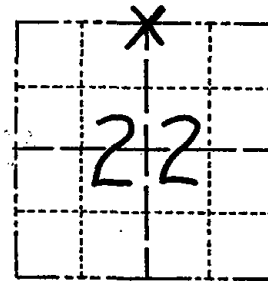
DRAWN BY: B. SULLIVAN

CORNER NO. 68

SECTION 22

TOWN 15

RANGE 7



LOCATION
(Indicated by 'X')

BASIS FOR MONUMENT LOCATION

Show info such as: History of corner, with reference to Vol. and pg., dates, surveyor; exact description of monument replaced; if location computed, by taped or EDM traverse; landowner remarks, etc. (Use reverse side if necessary)

Set corner opposite fence to the north and on line between adjacent section corners. this location fits possession and fences to the east and west quite well. This location does not reflect the split by A.J. Barrett as recorded in Field book 2 page 200, April 6, 1898.

Excavation was not attempted at this corner.

SEE TIE SHEET WOODSTER 15 NOV. 01

SEAL:



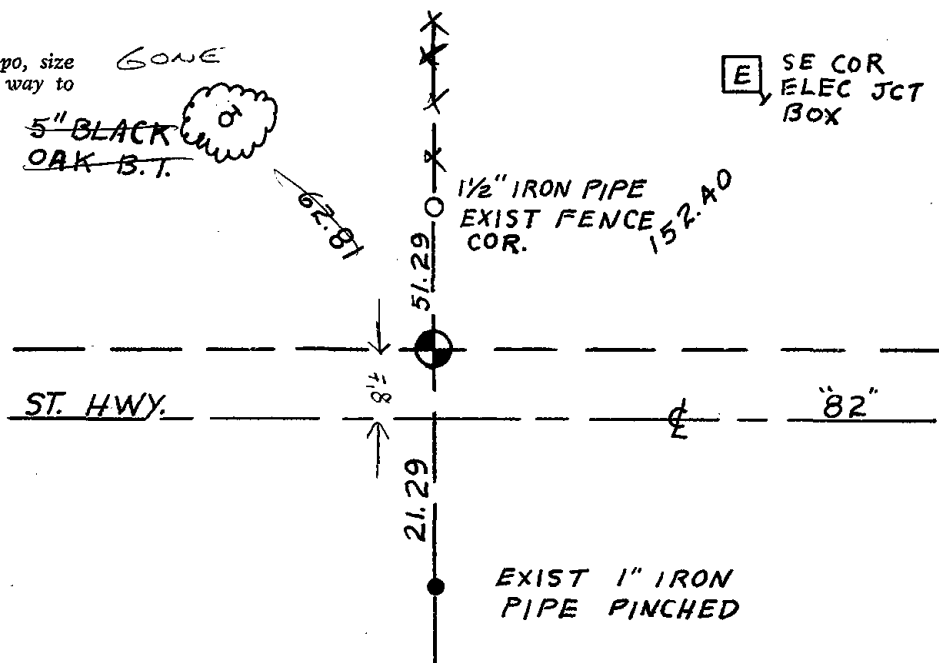
DATA SHOWN HERE ON
CERTIFIED CORRECT:

Gregory P Rhinehart
Registered Land Surveyor

DATE: 7/3/79

TIE SKETCH

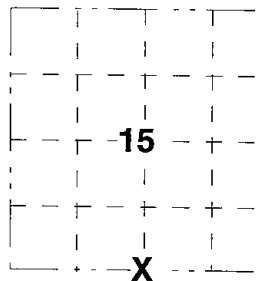
Show at least four ties, also fence lines, roads, topo, size and type of witness trees and if off road - best way to arrive at corner.



Government Land Corner Certificate

ADAMS County
 TYPE OF MONUMENT HARRISON
 STATE PLANE COORDINATES: N. _____
 E. _____
 ELEVATION _____ M.S.L. DATUM: _____
 THETA ANGLE: _____
 FIELD BOOK: _____ PAGE: _____
 DRAWN BY: _____ E.W.

CORNER NO. _____
 SECTION 15
 TOWN T15N
 RANGE R7E



LOCATION
 (Indicated by 'X')

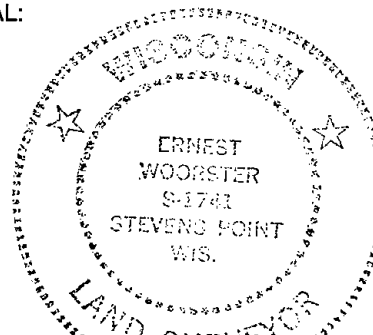
BASIS FOR MONUMENT LOCATION

Show info such as; History of corner, with reference to Vol. and pg., dates, surveyor, exact description of monument replaced; if location computed by taped or EDM traverse; landowner remarks, etc. (use reverse side if necessary).

MONUMENT LOCATED AND TIED PRIOR TO RECONSTRUCTION OF THE HIGHWAY. NEW TIES PROVIDED. TIES ARE AL. DISC SET IN CONCRETE. DISC STATES WISCONSIN DEPARTMENT OF TRANSPORTATION DO NOT DISTURB.

ALL OK, 5-11-06 - JG
OK 2-18-11 SS

SEAL:



DATA SHOWN HEREON
 CERTIFIED CORRECT:

Ernest Wooster

Registered Land Surveyor

DATE 15 Nov 01

TIE SKETCH

Show at least four ties; also fence lines, roads, topo, size and type of witness trees' and if off road- best way to arrive at corner.

