

14
SECTION

15
TOWN

07
RANGE

ADAMS COUNTY

COUNTY CORNER NO: 70

ROMPORTOL ID: 41507140020

PUBLIC LAND SURVEY MONUMENT RECORD

TYPE OF MONUMENT: HARRISON
ADAMS COUNTY COORDINATES, NAD 83 (2007)

N. 148771.794

E. 580986.369

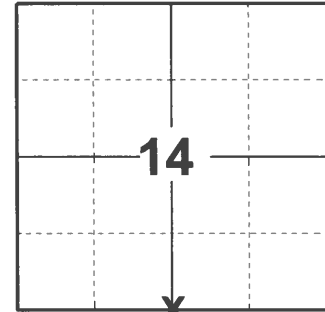
ELEVATION- _____ DATUM _____

FIELD WORK DATE: 03/11/2021

BASIS FOR MONUMENT LOCATION

1979 - PLS 1478 FOUND A 1"X 24" IRON PIPE VERY NEARLY MATCHING THE LOCATION OF THE CORNER INDICATED ON THE UNRECORDED PLAT OF "SILVER SANDS BEACH" BY H.C. AMUNDSEN. REPLACED SAID IRON PIPE WITH HARRISON MONUMENT.

2021 - PLS 2675 FOUND HARRISON MONUMENT 4" ABOVE THE GROUND SURFACE, 1 TIE AND 3 WITNESSES. THE MONUMENT AGREES WITH THE TIE AND WITNESSES. ACCEPTED THE HARRISON MONUMENT AS THE CORNER LOCATION. SET 4 NEW TIES AND MEASURED TO EXISTING TIE AND WITNESSES.



LOCATION

(INDICATE CORNER BY "X")

SEAL:



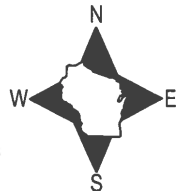
DATA SHOWN HERE ON THIS TIE SHEET IS CORRECT AND COMPLETE TO THE BEST OF MY KNOWLEDGE AND BELIEF.

PROFESSIONAL LAND SURVEYOR

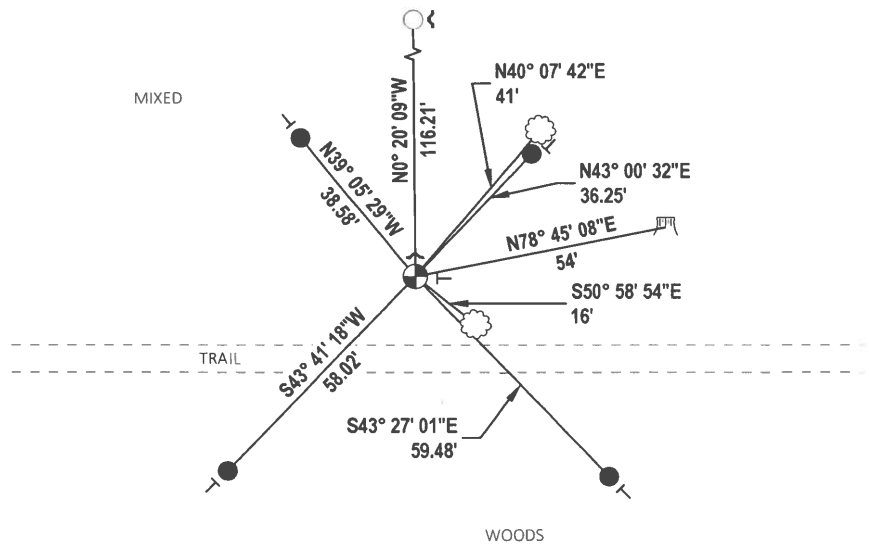
DATE 5/19/21

- TIE SKETCH

NOTE: CORNER LANDS 17± NORTH OF THE CENTERLINE OF TRAIL.



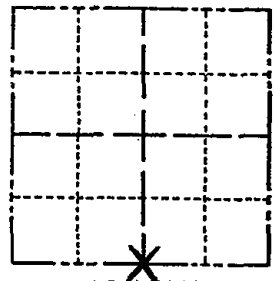
- SET 3/4" x 18" IRON REBAR, 1.50#/FT
- FOUND 3/4" IRON ROD
- ⊕ FOUND HARRISON MONUMENT
- ▭ WITNESS STUMP
- ~ STEEL FENCE POST
- ┆ VINYL "T" POST
- ⊗ WITNESS TREE



Government Land Corner Certificate

ADAMS County
 TYPE OF MONUMENT: HARRISON MONUMENT
 STATE PLANE COORDINATES: N _____
 E _____
 ELEVATION — M.S.L. DATUM: _____
 THETA ANGLE: _____
 FIELD BOOK: 77 PAGE 138
 DRAWN BY: R. NUBER

CORNER NO. 70
 SECTION 14
 TOWN 15
 RANGE 7



LOCATION
 (Indicated by 'X')

BASIS FOR MONUMENT LOCATION

Show info such as: History of corner, with reference to Vol. and pg., dates, surveyor; exact description of monument replaced; if location computed, by taped or EDM traverse; landowner remarks, etc. (Use reverse side if necessary)
 Replaced 1" X24" Iron Pipe with standard Harrison Monument. This point very nearly matches the location of the corner as indicated on the unrecorded plat of "Silver Sands Beach" by H. C. Amundsen.

SEAL:



DATA SHOWN HERE ON
 CERTIFIED CORRECT:

Gregory P. Rhinehart
 Registered Land Surveyor

DATE: Dec. 10, 1979

TIE SKETCH

Show at least four ties, also fence lines, roads, topo, size and type of witness trees' and if off road - best way to arrive at corner.

NOTE: FIELD DRIVE ENTERS FROM 3RD AVENUE AT SW COR NW1/4 NW1/4 23-15-7.

