

13
SECTION

15
TOWN

07
RANGE

ADAMS COUNTY

COUNTY CORNER NO: 72

ROMPORTOL ID: 41507130020

PUBLIC LAND SURVEY MONUMENT RECORD

TYPE OF MONUMENT: HARRISON
ADAMS COUNTY COORDINATES, NAD 83 (2007)

N. 148760.595

E. 586312.923

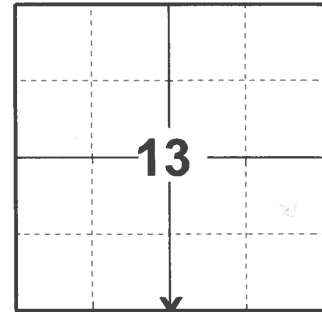
ELEVATION- - - - - DATUM - - - - -

FIELD WORK DATE: 03/10/2021

BASIS FOR MONUMENT LOCATION

1972 - PLS 981 FOUND 2-1/2" IRON PIPE AND REPLACED WITH HARRISON MONUMENT.

2021 - PLS 2675 FOUND HARRISON MONUMENT 6" ABOVE GROUND. DID NOT RECOVER ANY EVIDENCE OF EXISTING TIES OR WITNESSES. CORNER LOCATION AGREES WITH SECTION SUMMARY DISTANCES. ACCEPTED THE HARRISON MONUMENT AS CORNER LOCATION. SET 4 NEW TIES AND MEASURED.



LOCATION

(INDICATE CORNER BY "X")

SEAL:



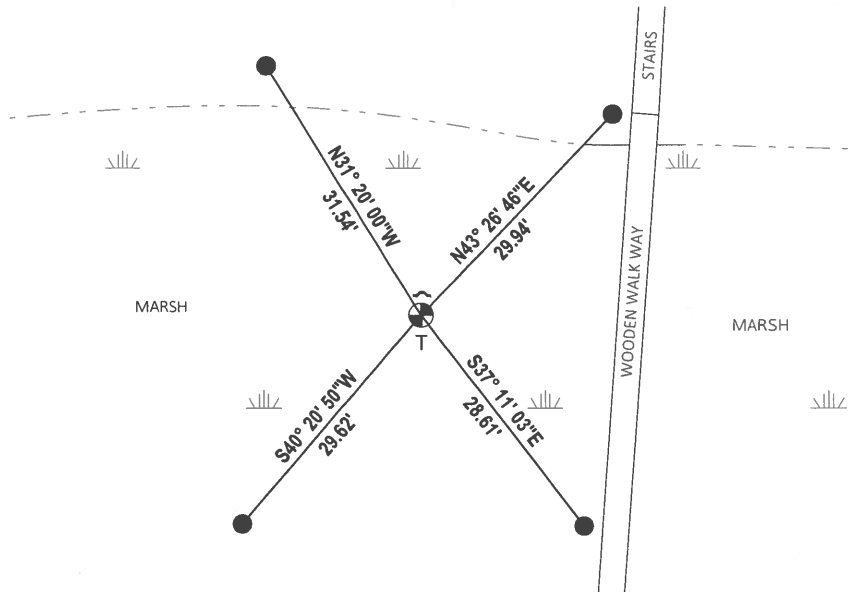
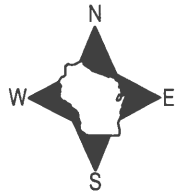
DATA SHOWN HERE ON THIS TIE SHEET IS CORRECT AND COMPLETE TO THE BEST OF MY KNOWLEDGE AND BELIEF.

PROFESSIONAL LAND SURVEYOR

DATE 5/19/21

TIE SKETCH

NOTE: CORNER IS LOCATED 21'± WEST OF WOODEN WALK WAY.



- SET 3/4" x 18" IRON REBAR, 1.50#/FT
- ⊕ FOUND HARRISON MONUMENT
- ~ VINYL "T" POST
- STEEL FENCE POST

ADAMS COUNTY

Survey Monument Record

TYPE OF MONUMENT: "30" HARRISON

STATE PLANE COORDINATES: N _____

E _____

ELEVATION — M.S.L. DATUM: _____

THETA ANGLE: _____

FIELD BOOK: 106 PAGE _____

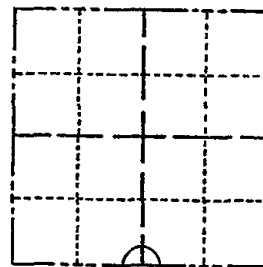
CORNER NO. 119

72

SECTION 13

TOWN 15

RANGE 7



LOCATION (Indicated by 'X')

BASIS FOR MONUMENT LOCATION

(Use reverse side if necessary)

Show info such as: History of corner, with reference to Vol. and pg, dates, surveyor; exact description of monument replaced; if location computed, by taped or EDM traverse; landowner remarks, etc.

SEAL:

Found 2 1/2" iron pipe and set monument

May 7, 1972

Sam T. Mullen R.L.S. S-981

CORNER O.K. 10-28-76 RN-SS

" " 3-27-86 GR-SS

" " 5-8-91 JG-SS

1 NEW TIE 4-3-96 JG-SS

W-2-01 ALL OK MH-SS

3-27-06-ALL OK, MON. TIPPED, - GPR

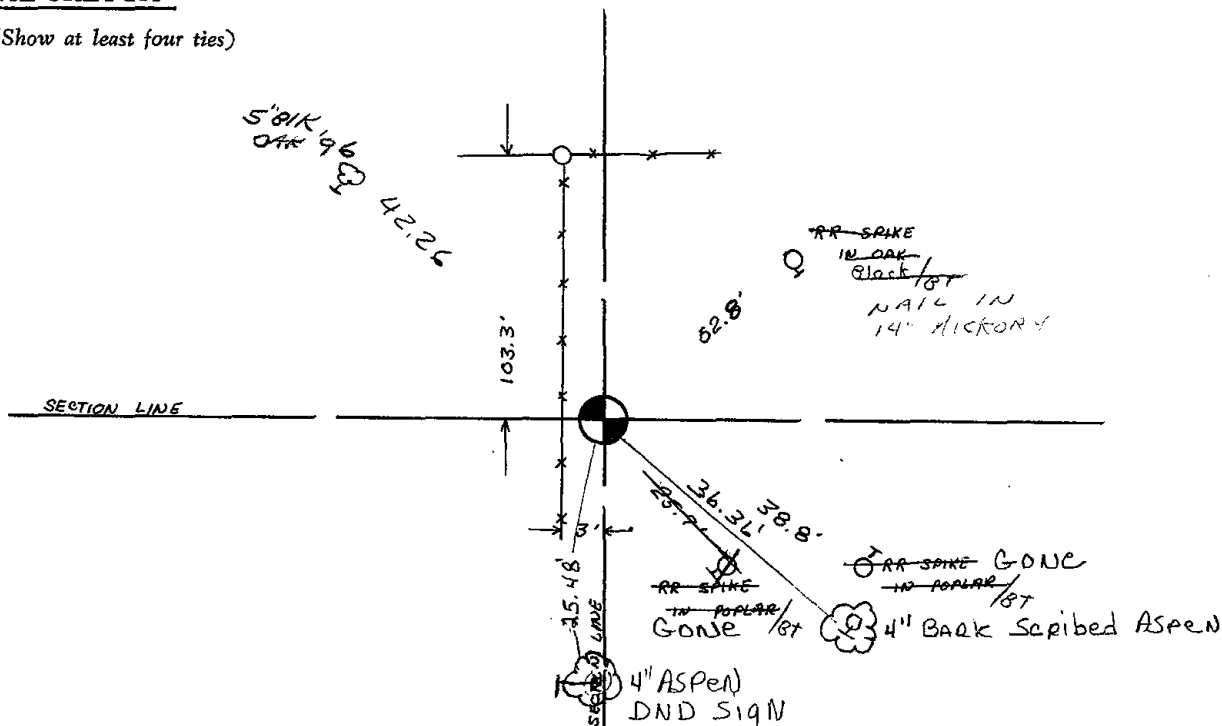
CERTIFIED CORRECT:

Registered Land Surveyor

DATE: _____

TIE SKETCH

(Show at least four ties)



MAINTENANCE RECORD

Date	Init.	Remarks
12-30-81	FA-NJ	test O.K
3-27-86	CR-94	" "