

PUBLIC LAND SURVEY MONUMENT RECORD

TYPE OF MONUMENT: HARRISON
 ADAMS COUNTY COORDINATES, NAD 83 (2007)

N. 146118.603

E. 573098.493

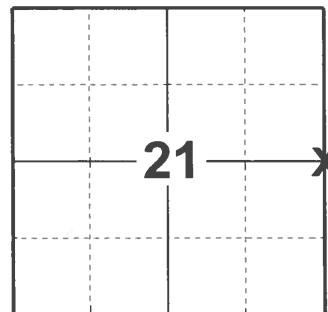
ELEVATION- _____ DATUM _____

FIELD WORK DATE: 04/06/2021

BASIS FOR MONUMENT LOCATION

1979 - PLS 1478 DID NOT EXCAVATE AREA DUE TO LARGE AMOUNT OF ROADWORK AND LACK OF APPARENT POSSESSION ALONG LINE. SET CORNER EQUIDISTANT AND ON LINE BETWEEN ADJACENT SECTION CORNERS.

2021 - PLS 2675 FOUND HARRISON MONUMENT 4" BELOW ROAD SURFACE AND 1 WITNESS. MONUMENT AGREES WITH THE WITNESS. ACCEPTED HARRISON MONUMENT AS THE CORNER LOCATION. SET 4 NEW TIES AND MEASURED TO THE EXISTING WITNESS.



LOCATION

(INDICATE CORNER BY "X")

SEAL:



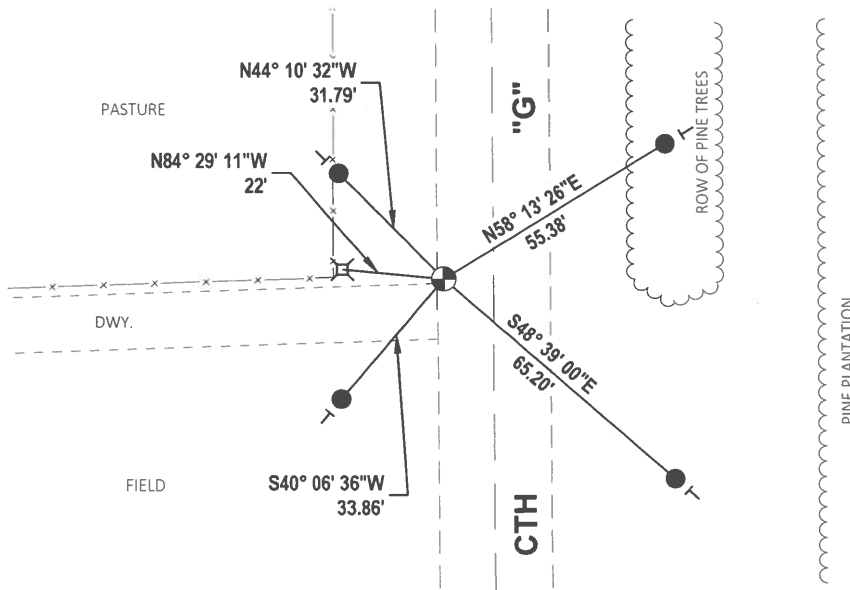
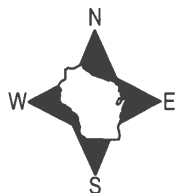
DATA SHOWN HERE ON THIS TIE SHEET IS CORRECT AND COMPLETE TO THE BEST OF MY KNOWLEDGE AND BELIEF.

PROFESSIONAL LAND SURVEYOR

DATE 5/19/21

TIE SKETCH

NOTE: CORNER LANDS 10.5± WEST OF THE CENTERLINE OF CTH "G".



- SET 3/4" x 18" IRON REBAR, 1.50#/FT
- ⊕ FOUND HARRISON MONUMENT
- VINYL "T" POST
- ⊗ WITNESS PEDISTAL

Government Land Corner Certificate

ADAMS County

TYPE OF MONUMENT: HARRISON

STATE PLANE COORDINATES: N _____
E _____

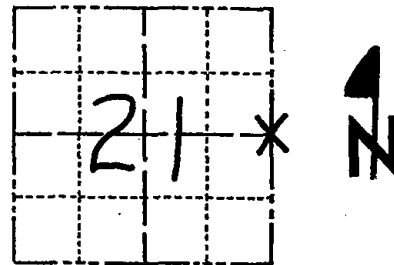
ELEVATION — M.S.L. DATUM: _____

THETA ANGLE: _____

FIELD BOOK: 76 PAGE 15

DRAWN BY: B. SULLIVAN

CORNER NO. 77
SECTION 21
TOWN 15
RANGE 7



LOCATION
(Indicated by 'X')

BASIS FOR MONUMENT LOCATION

Show info such as: History of corner, with reference to Vol. and pg., dates, surveyor; exact description of monument replaced; if location computed, by taped or EDM traverse; landowner remarks, etc. (Use reverse side if necessary)

Set corner equidistant and on line between adjacent section corners. excavation at this location was not attempted due to the large amount of roadwork and the lack of any apparent possession along this line.

SEAL:



DATA SHOWN HERE ON
CERTIFIED CORRECT:

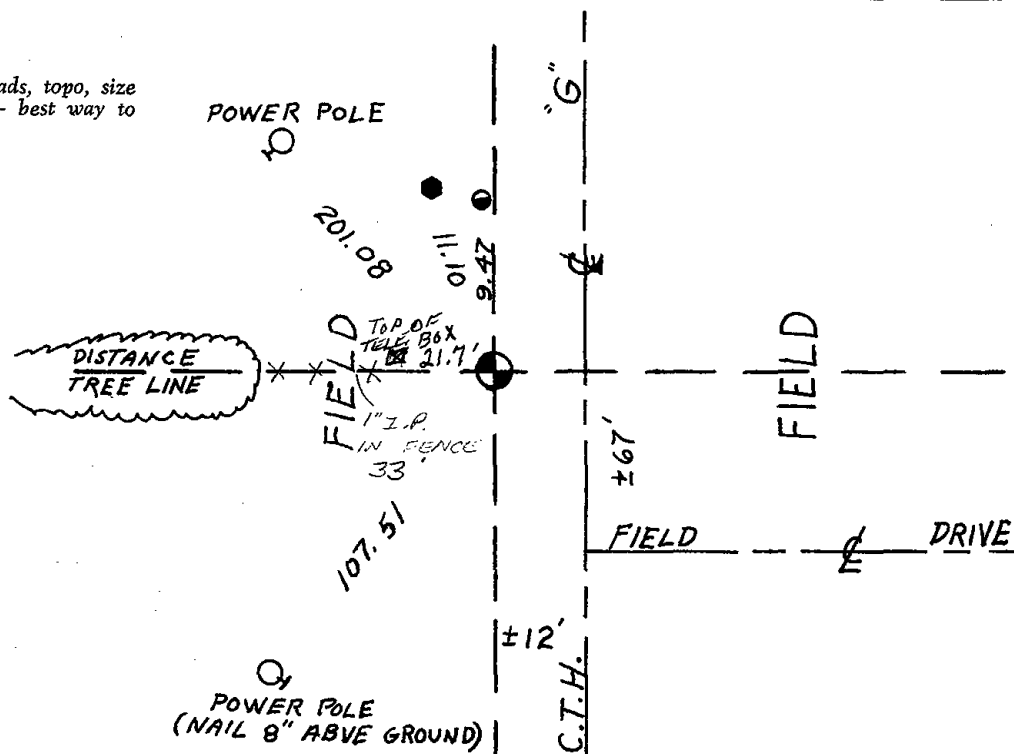
Gregory P. Rhinehart
Registered Land Surveyor

DATE:

7/3/79

TIE SKETCH

Show at least four ties, also fence lines, roads, topo, size and type of witness trees and if off road - best way to arrive at corner.



- FOUND
- 1/2" IRON BAR
 - 1" IRON PIPE

