

24 SECTION 15 TOWN 07 RANGE

# ADAMS COUNTY

COUNTY CORNER NO: 80  
ROMPORTOL ID: 41507242000

## PUBLIC LAND SURVEY MONUMENT RECORD

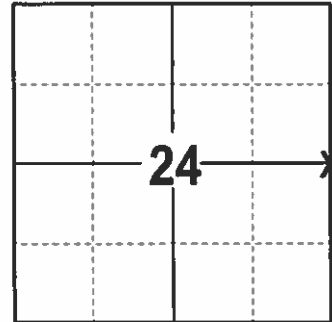
TYPE OF MONUMENT: 2 3/8" OD IRON PIPE W/BRASS CAP  
ADAMS COUNTY COORDINATES, NAD 83 (2007)

N. 146128.445

E. 588963.106

ELEVATION-      DATUM     

FIELD WORK DATE: 2/1/2017



### BASIS FOR MONUMENT LOCATION

1976- PLS 823 SET 2"X30" IRON PIPE W/BRASS CAP TIGHT AGAINST A FOUND STONE CALLED FOR BY PREVIOUS SURVEYS. THIS MONUMENT CONFORMS TO ORIGINAL GOVERNMENT SURVEYS

2017 - PLS 2994 FOUND 2"OD IRON PIPE W/BRASS CAP AT SURFACE AND A WITNESS POWER POLE. THE 2" IRON PIPE AGRESS WITH THE WITNESS POWER PLE. ACCEPTED THE 2"OD IRON PIPE W/BRASS CAP AND SET 4 NEW TIES.

LOCATION  
(INDICATE CORNER BY "X")

SEAL:



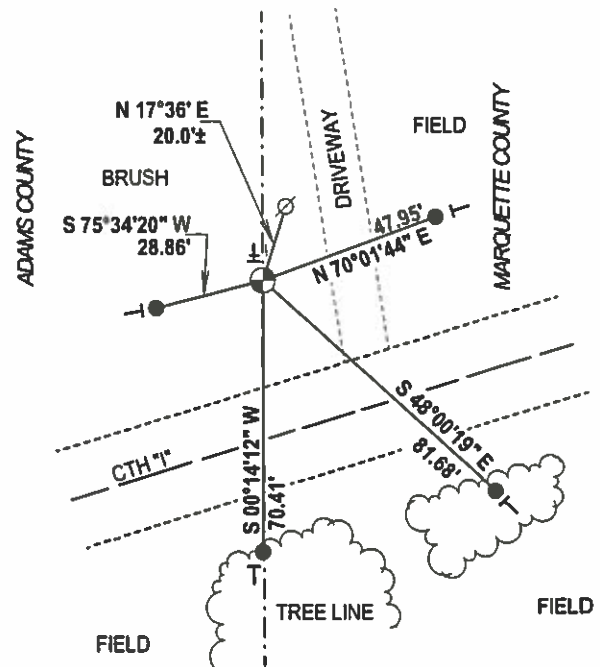
DATA SHOWN HERE ON THIS TIE SHEET IS CORRECT AND COMPLETE TO THE BEST OF MY KNOWLEDGE AND BELIEF.

PROFESSIONAL LAND SURVEYOR

DATE 3/7/17

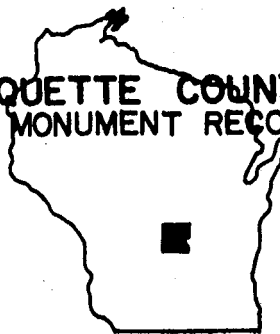
### - TIE SKETCH -

NOTE: THE CORNER FALLS 40'± NORTH OF THE CENTERLINE OF CTH I.



- 3/4" x 18" IRON REBAR SET, 1.50#/FT
- ⊙ FOUND HARRISON
- ⊘ FOUND WITNESS POWER POLE
- VINYL "T" POST

MARQUETTE COUNTY SURVEY MONUMENT RECORDS



Town of Oxford

Station No. A-8

Section Corner 

24	19
24	19

Township 15 N; Range 8 E  
Type of Monument: 2"x30" Iron Pipe/Brass Cap

State Plane Coordinates: N \_\_\_\_\_  
E \_\_\_\_\_

Elevation - M.S.L. Datum: \_\_\_\_\_

Theta Angle: \_\_\_\_\_

Field Book \_\_\_\_\_ Page \_\_\_\_\_

Set By: \_\_\_\_\_ Date: \_\_\_\_\_

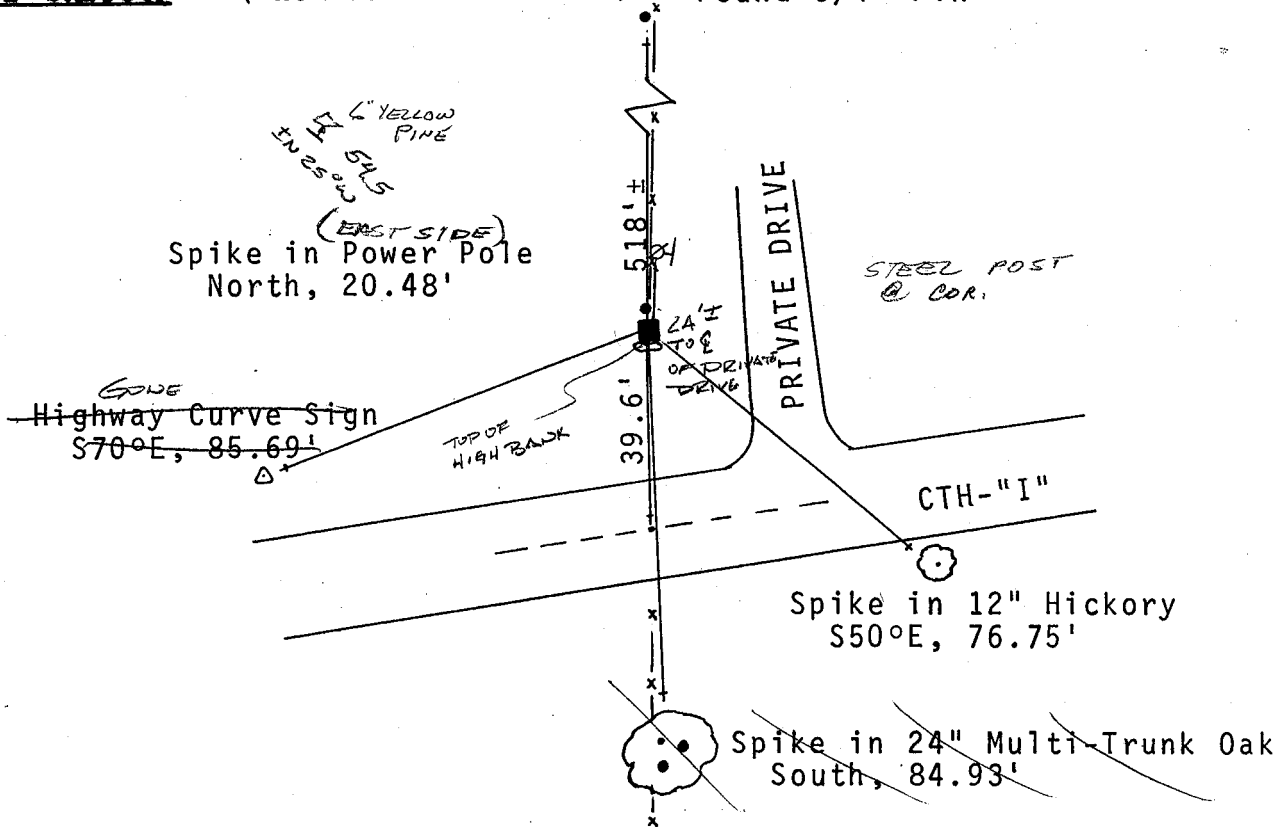
BASIS FOR MONUMENT LOCATION

(Show info such as: History of corner; exact description of monument; computations; remarks, etc.)

Monument set tight against a found stone called for by previous survey.

- OK - 2-19-86 GR-SS
- OK - 6-12-91 JG-CR
- " 4-3-96 JG-SS
- 1 GONE 3-2-01 26-MA
- OK, 8-7-06-JG
- 1 NEW TIE 3-17-11 SS

TIE SKETCH (Show at least four ties) Found 3/4" Pin



State of Wisconsin  
Marquette County

I hereby certify that this monument conforms to the original Government surveys and has been set in accordance with the above referenced information.

Date 10/6/76

D. William Karns S-823  
Registered Land Surveyor  
D. William Karns, Marquette Co. Surveyor