

19  
SECTION

15  
TOWN

07  
RANGE

# ADAMS COUNTY

COUNTY CORNER NO: 82

ROMPORTOL ID: 41507190020

## PUBLIC LAND SURVEY MONUMENT RECORD

TYPE OF MONUMENT: HARRISON  
ADAMS COUNTY COORDINATES, NAD 83 (2007)

N. 143488.411

E. 560008.586

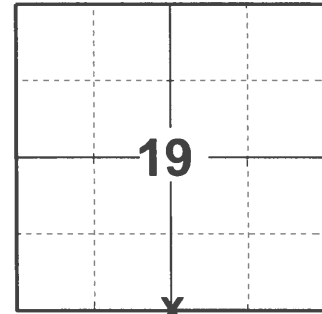
ELEVATION- \_\_\_\_\_ DATUM \_\_\_\_\_

FIELD WORK DATE: 04/06/2021

### BASIS FOR MONUMENT LOCATION

1976 - PLS 878 EXCAVATED AREA WITH BACKHOE. FOUND 5'X5'X9" SQUARE SANDSTONE WITH STAIN OF POST UNDER IT. WITNESSED BY ADJACENT LANDOWNER CLIFFORD SWEDA NOTED HIS PARENTS REFERRED TO IT MANY YEARS AGO. BELIEVED TO HAVE BEEN SET BY BARRETT, PER COUNTY SURVEYOR RECORDS VOLUME 1, PAGE 8. LOWERED STONE AND SET HARRISON ON TOP.

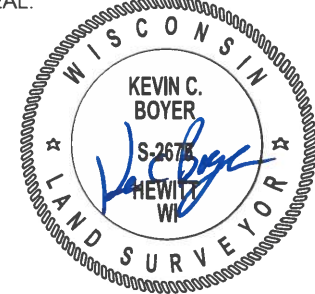
2021 - PLS 2675 FOUND HARRISON MONUMENT 4" BELOW ROAD SURFACE AND 1 WITNESS. MONUMENT AGREES WITH WITNESS. ACCEPTED HARRISON MONUMENT AS THE CORNER LOCATION. SET 4 NEW TIES AND MEASURED TO A FOUND PROPERTY IRON AND EXISTING WITNESS.



LOCATION

(INDICATE CORNER BY "X")

SEAL:



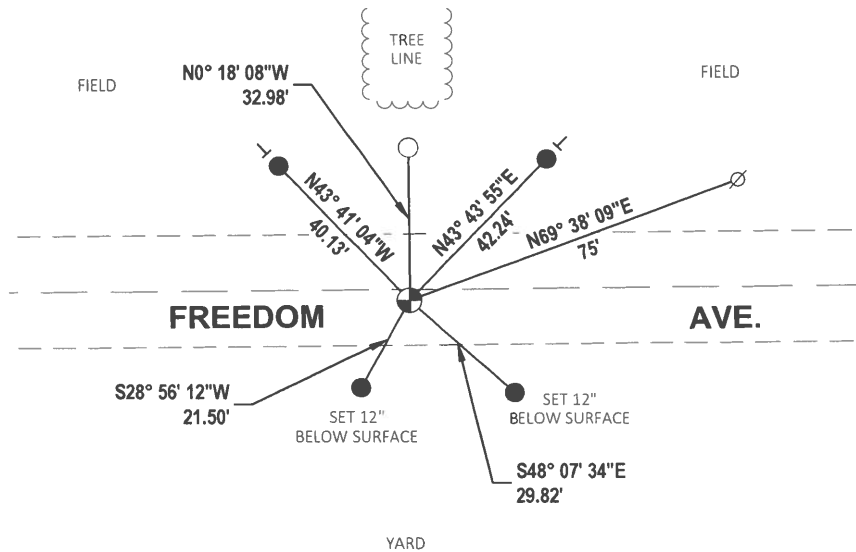
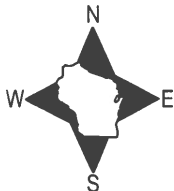
DATA SHOWN HERE ON THIS TIE SHEET IS CORRECT AND COMPLETE TO THE BEST OF MY KNOWLEDGE AND BELIEF.

PROFESSIONAL LAND SURVEYOR

DATE 5/19/21

### TIE SKETCH

NOTE: CORNER LANDS 2.4'± SOUTH OF THE CENTERLINE OF FREEDOM AVE.



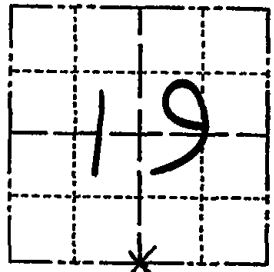
- SET 3/4" x 18" IRON REBAR, 1.50#/FT
- FOUND 3/4" IRON ROD
- ⊙ FOUND HARRISON MONUMENT
- ⊘ WITNESS POWER POLE
- ⊢ VINYL "T" POST

# ADAMS COUNTY

## Survey Monument Record

TYPE OF MONUMENT: Harrison standrad  
 STATE PLANE COORDINATES: N \_\_\_\_\_  
 E \_\_\_\_\_  
 ELEVATION — M.S.L. DATUM: \_\_\_\_\_  
 THETA ANGLE: \_\_\_\_\_  
 FIELD BOOK: 41 PAGE 17

CORNER NO. 1056 (82)  
 SECTION 19  
 TOWN 15  
 RANGE 7



LOCATION  
(Indicated by 'X')

SEAL:



### BASIS FOR MONUMENT LOCATION

(Use reverse side if necessary)

Show info such as: History of corner, with reference to Vol. and pg, dates, surveyor; exact description of monument replaced; if location computed, by taped or EDM traverse; landowner remarks, etc.

Excavated with backhoe. Found 5'x5'x9' squared sandstone with stain of post under it. Witnessed by adjacent landowner Clifford Sweda. He said his parents had referred to it many years ago.

Believed to have been set by Barrett, per County Surveyor records Vol. 1, Page 8.

Lowered stone and set Harrison on top.

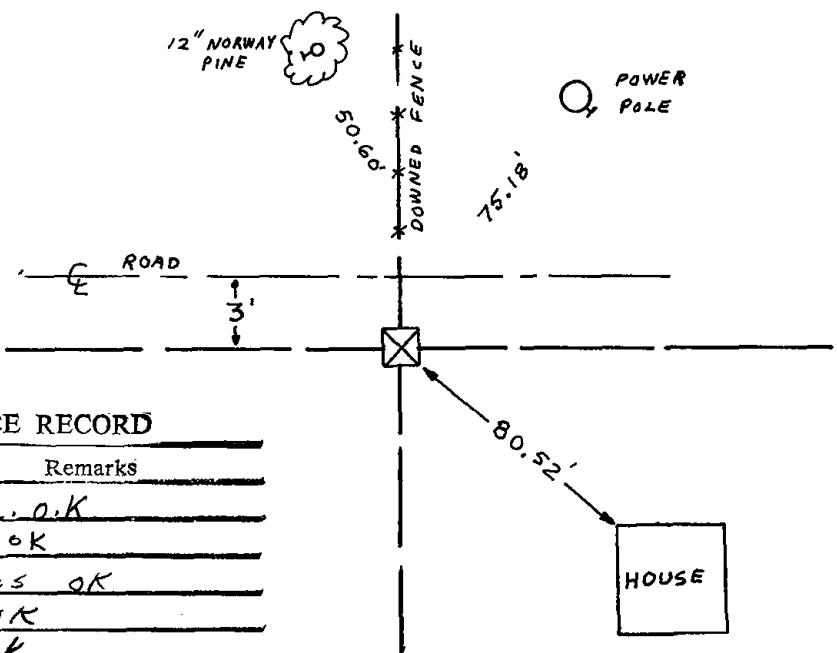
CERTIFIED CORRECT:

*Anthony B. Kiedrowski*  
 Registered Land Surveyor

DATE: 5/19/76

### TIE SKETCH

(Show at least four ties)



### MAINTENANCE RECORD

Date	Init.	Remarks
12-29-81	TH-NJ	Mon. o.k
2-3-86	GR-SS	o.k
6-7-91	JG-SS	TIES OK
11-29-95	SS	OK
2-16-01	JG	OK
8-8-06	JG	OK
7-15-11	SS	OK