

22
SECTION

15
TOWN

07
RANGE

ADAMS COUNTY

COUNTY CORNER NO: 88

ROMPORTOL ID: 41507220020

PUBLIC LAND SURVEY MONUMENT RECORD

TYPE OF MONUMENT: HARRISON
ADAMS COUNTY COORDINATES, NAD 83 (2007)

N. 143499.031

E. 575738.630

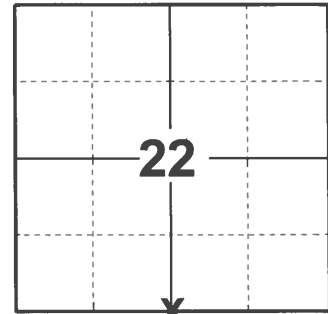
ELEVATION- _____ DATUM _____

FIELD WORK DATE: 04/06/2021

BASIS FOR MONUMENT LOCATION

1976 - PLS 922 FOUND NO EVIDENCE OF EXISTING CORNER AND TIES. PRORATED WISE'S DISTANCE ALONG NORTH LINE OF SECTION 27 AND SET CORNER ON LINE BETWEEN NORTHWEST AND NORTHEAST SECTION CORNERS. CORNER LANDS IN FIELD AS NOTED BY PHILLIPS.

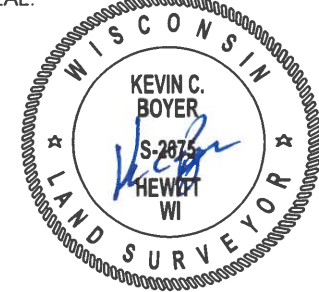
2021 - PLS 2675 FOUND HARRISON MONUMENT 18" BELOW GROUND SURFACE AND RECOVERED NO EXISTING TIES OR WITNESSES. VERIFIED CORNER LOCATION BY USING CEDAR RIDGE SUBDIVISION PLAT. CORNER AGREES WITH ALL RECORDED DISTANCES. ACCEPTED HARRISON MONUMENT AS THE CORNER LOCATION. MEASURED TO FOUND PROPERTY IRONS ON LOT 3 AND 4 OF CEDAR RIDGE SUBDIVISION.



LOCATION

(INDICATE CORNER BY "X")

SEAL:



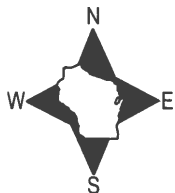
DATA SHOWN HERE ON THIS TIE SHEET IS CORRECT AND COMPLETE TO THE BEST OF MY KNOWLEDGE AND BELIEF.

PROFESSIONAL LAND SURVEYOR

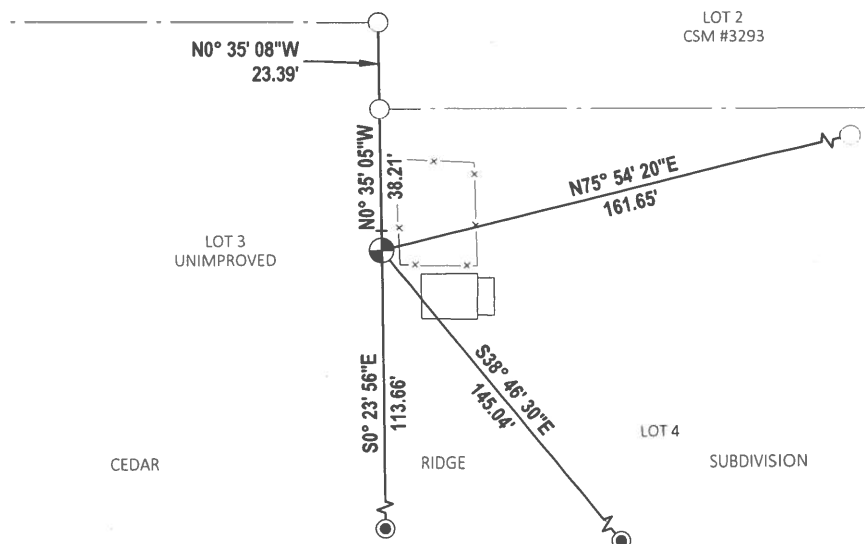
DATE 5/19/21

TIE SKETCH

NOTE: CORNER LANDS 4.8'± WEST OF FENCE.



- FOUND 3/4" IRON ROD
- FOUND 1-1/4" IRON ROD
- ⊕ FOUND HARRISON MONUMENT
- └ VINYL "T" POST

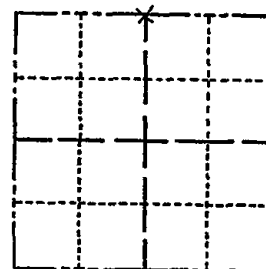


ADAMS COUNTY

Survey Monument Record

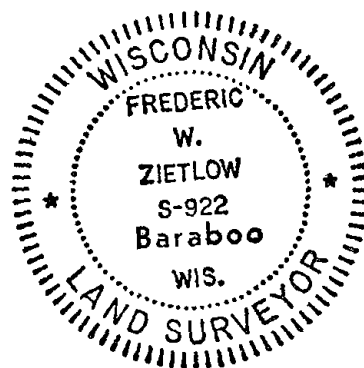
TYPE OF MONUMENT: HARRISON 30"
 STATE PLANE COORDINATES: N _____
 E _____
 ELEVATION — M.S.L. DATUM: _____
 THETA ANGLE: _____
 FIELD BOOK: _____ PAGE _____

CORNER NO. 1007
 SECTION 27
 TOWN T. 15 N.
 RANGE R. 7 E.



LOCATION
(Indicated by 'X')

SEAL:



BASIS FOR MONUMENT LOCATION

(Use reverse side if necessary)

Show info such as: History of corner, with reference to Vol. and pg, dates, surveyor; exact description of monument replaced; if location computed, by taped or EDM traverse; landowner remarks, etc.

CHECKED COUNTY SURVEY RECORDS FOR RESURVEYS AND FOUND THAT CO. SURVEYOR WISE SET OUT A NEW BEARING TREE IN 1876, THIS IS NOW OBLITERATED. I PRORATED WISE'S DISTANCE'S ALONG NORTH LINE OF SECTION 27 AND SET THIS CORNER ON LINE BETWEEN THE NW & NE CORN. FALLS IN FIELD AS NOTED BY PHILLIPS IN 1938. EDM. - THEODOLITE TRAVERSE.

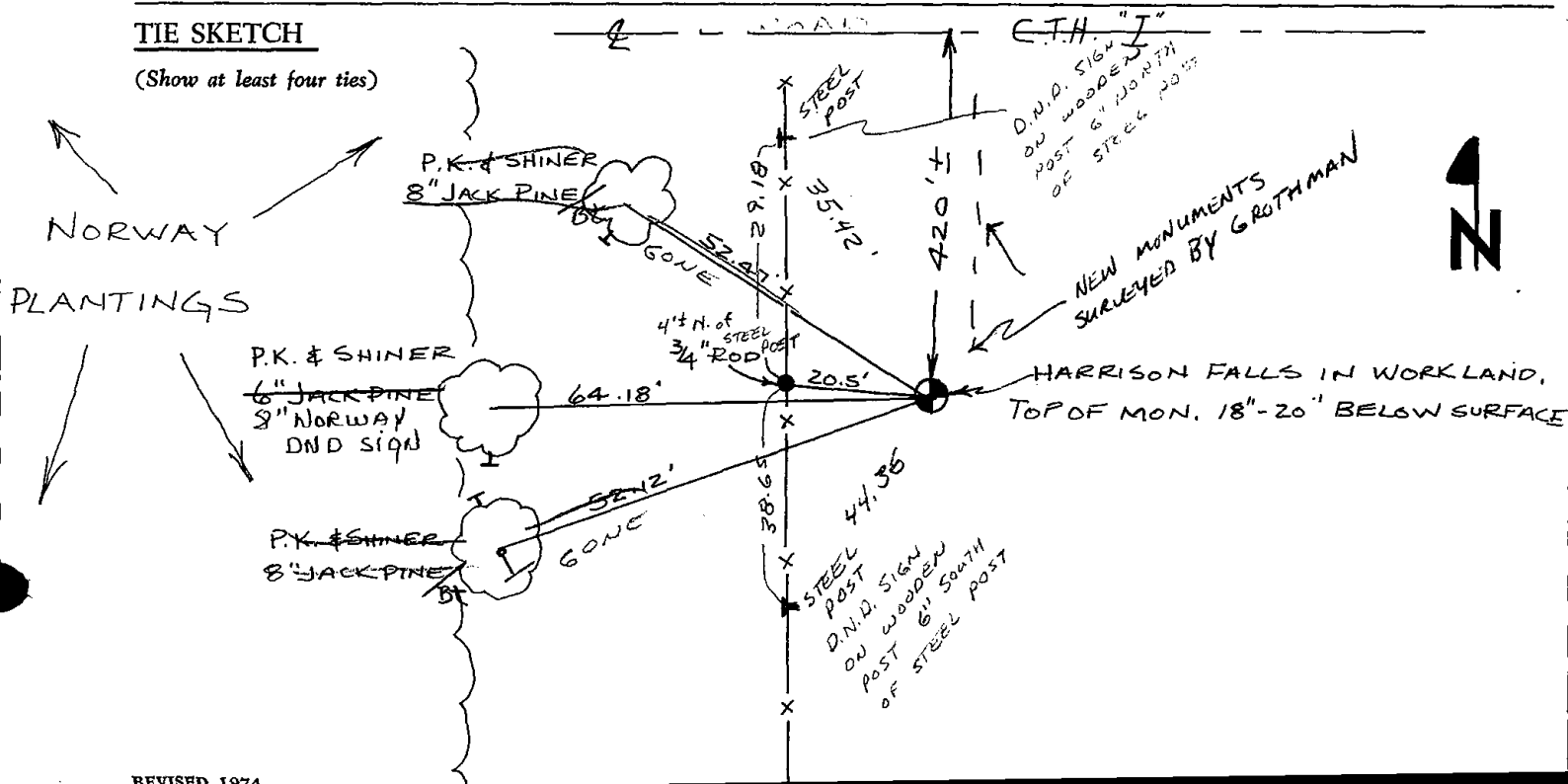
CERTIFIED CORRECT:

Frederic W. Zietlow
 Registered Land Surveyor

DATE: JULY 19, 1976

TIE SKETCH

(Show at least four ties)



MAINTENANCE RECORD

Date	Init	Remarks
12-29-81	JH-NJ	Ties O.K
3-27-86	GR-SS	2 NEW TIES
11-20/91	KE-JG	ALL OK
3-5-01	JG-MH	OK
12-21-11	MS	OK SEE GROTHMAN SURVEY