

22
SECTION

15
TOWN

07
RANGE

ADAMS COUNTY

COUNTY CORNER NO: 78

ROMPORTOL ID: 41507222000

PUBLIC LAND SURVEY MONUMENT RECORD

TYPE OF MONUMENT: HARRISON
ADAMS COUNTY COORDINATES, NAD 83 (2007)

N. 146129.790

E. 578308.746

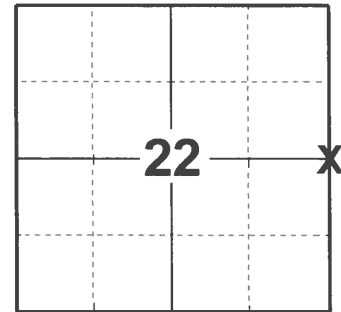
ELEVATION- _____ DATUM _____

FIELD WORK DATE: 04/05/2021

BASIS FOR MONUMENT LOCATION

1975 - PLS 1191 FOUND EXISTING NAIL WITH BOTTLE CAP 2" BELOW ROAD SURFACE. CORNER ESTABLISHED FEB. 11 1966 BY PLS 742. REFERENCED CHUCK CONNELL SURVEY PROJECT NUMBER 1871 F.B. 336 PAGE 23 FILE NUMBER 22-68-5. PLS 1191 REMONUMENTED CORNER LOCATION WITH HARRISON IN SPRING OF 1975.

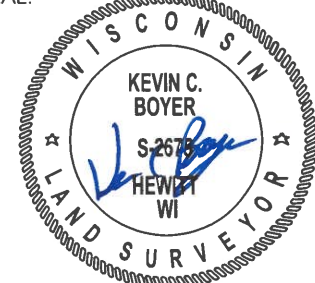
2021 - PLS 2675 FOUND HARRISON MONUMENT 2" BELOW ROAD SURFACE AND 1 WITNESS. THE MONUMENT AGREES WITH THE WITNESS. ACCEPTED HARRISON MONUMENT AS THE CORNER LOCATION. SET 4 NEW TIES AND MEASURED TO THE EXISTING WITNESS.



LOCATION

(INDICATE CORNER BY "X")

SEAL:



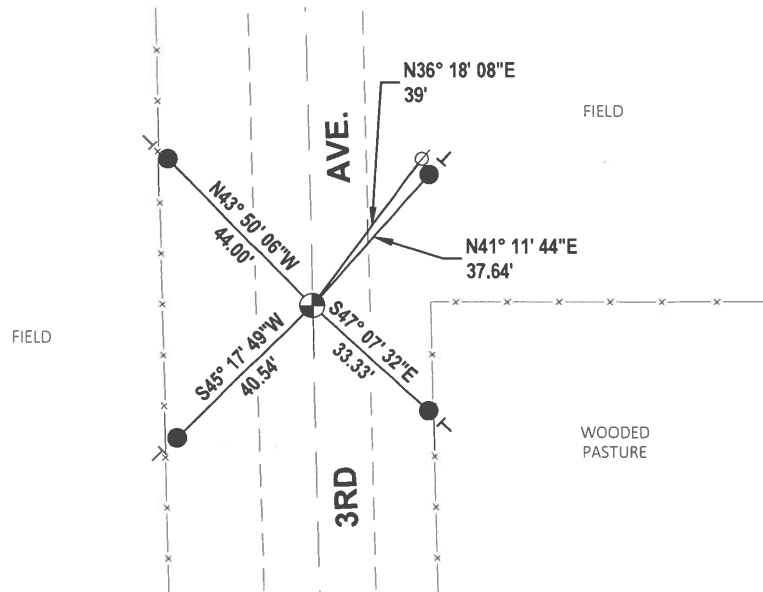
DATA SHOWN HERE ON THIS TIE SHEET IS CORRECT AND COMPLETE TO THE BEST OF MY KNOWLEDGE AND BELIEF.

PROFESSIONAL LAND SURVEYOR

DATE 5/19/21

TIE SKETCH

NOTE: CORNER LANDS ON THE CENTERLINE OF 3RD AVE.



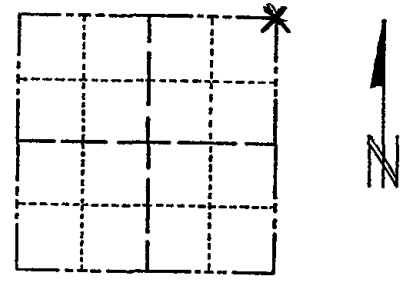
- SET 3/4" x 18" IRON REBAR, 1.50#/FT
- ⊕ FOUND HARRISON MONUMENT
- ∅ WITNESS POWER POLE
- ┆ VINYL "T" POST

ADAMS COUNTY

Survey Monument Record

TYPE OF MONUMENT: Harrison standard
 STATE PLANE COORDINATES: N _____
 E _____
 ELEVATION — M.S.L. DATUM: _____
 THETA ANGLE: _____
 FIELD BOOK: 107 PAGE 63

CORNER NO. 236
 SECTION 26
 TOWN 15
 RANGE 7



LOCATION
(Indicated by 'X')

SEAL:



BASIS FOR MONUMENT LOCATION

(Use reverse side if necessary)

Show info such as: History of corner, with reference to Vol. and pg, dates, surveyor; exact description of monument replaced; if location computed, by taped or EDM traverse; landowner remarks, etc.

Found 3/4" x 24" iron rod. Monumented same. Location appears correct from data gathered from a traverse of the entire section.

Corner & ties O.K. 10-29-76 RN-SS

MAINTENANCE RECORD

Date	Init.	Remarks
12-30-81	TH-NJ	MON + TIES O.K.
2-3-86	GR-SS	" "
5-8-91	JG-SS	" " "
2-12-96	JG-SS	1 NEW TIE
8-7-06	JG	OK
3-17-11	SS	2 NEW TIES

CERTIFIED CORRECT:

Anthony B. Kiedrowski
 Registered Land Surveyor

DATE: 2-22-73

TIE SKETCH

(Show at least four ties)

