

PUBLIC LAND SURVEY MONUMENT RECORD

TYPE OF MONUMENT: HARRISON
 ADAMS COUNTY COORDINATES, NAD 83 (2007)

N. 140852.322

E. 567912.702

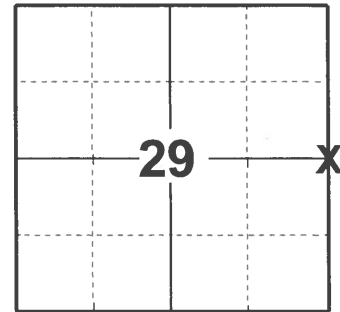
ELEVATION- _____ DATUM _____

FIELD WORK DATE: 04/26/2021

BASIS FOR MONUMENT LOCATION

1976 - PLS 922 RAN EDM TRAVERSE OF ENTIRE SECTION AND RECOVERED ALL OTHER GOVERNMENT CORNERS INCLUDING CW 1/16 CORNER AND CE 1/16 WHICH WERE ESTABLISHED BY M.C. SMITH IN 1909. USED BOTH 1/16 CORNERS TO LOCATE THE EAST 1/4 CORNER. BOTH OF BARRETT'S BEARING TREES FROM 1896 ARE GONE. SET EAST 1/4 CORNER ON LINE WITH WEST 1/4, CW 1/16 AND CE 1/16, BY DOUBLING THE DISTANCE FROM THE COMPUTED C 1/4 CORNER TO THE CE 1/16 CORNER. FIT OCCUPATION WITHIN REASON AND FIT EDM TRAVERSE OF SECTION GOOD.

2021 - PLS 2675 FOUND HARRISON MONUMENT 4" BELOW GROUND SURFACE AND 2 WITNESS TREES. THE MONUMENT AGREES WITH BOTH WITNESS TREES. ACCEPTED THE HARRISON MONUMENT AS THE CORNER LOCATION. SET 4 NEW TIES AND MEASURED TO THE 2 EXISTING WITNESSES.



LOCATION

(INDICATE CORNER BY "X")

SEAL:



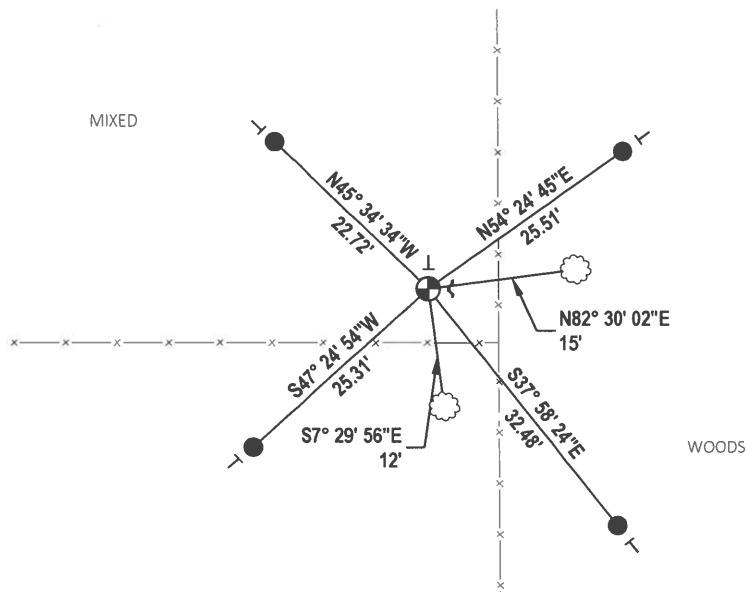
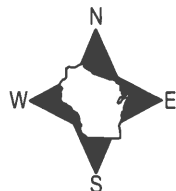
DATA SHOWN HERE ON THIS TIE SHEET IS CORRECT AND COMPLETE TO THE BEST OF MY KNOWLEDGE AND BELIEF.

PROFESSIONAL LAND SURVEYOR

DATE 5/19/21

- TIE SKETCH

NOTE: CORNER LANDS 7.5'± WEST OF THE NORTH - SOUTH FENCE LINE AND 5.8'± NORTH OF THE EAST - WEST FENCE LINE.



- SET 3/4" x 18" IRON REBAR, 1.50#/FT
- ⊕ FOUND HARRISON MONUMENT
- ~ STEEL FENCE POST
- VINYL "T" POST
- ☁ WITNESS TREE

ADAMS COUNTY

Survey Monument Record

TYPE OF MONUMENT: 3/4" X 24" IRON BAR, HARRISON TO BE SET SPRING 1976

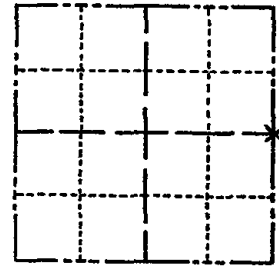
STATE PLANE COORDINATES: N _____
E _____

ELEVATION — M.S.L. DATUM: _____

THETA ANGLE: _____

FIELD BOOK: _____ PAGE _____

CORNER NO. 851 ⁹⁶
SECTION 29
TOWN 15 N
RANGE 7 E



LOCATION
(Indicated by 'X')

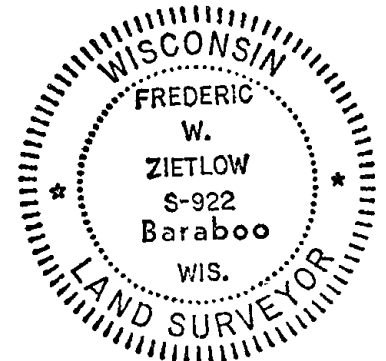
SEAL:

BASIS FOR MONUMENT LOCATION

(Use reverse side if necessary)

Show info such as: History of corner, with reference to Vol. and pg, dates, surveyor; exact description of monument replaced; if location computed, by taped or EDM traverse; landowner remarks, etc.

RAN EDM. TRAVERSE OF ENTIRE SECTION & RECOVERED ALL OTHER GOV'T CORNERS, INCLUDING C W 1/6 COR. & CE 1/6 WHICH WERE ESTABLISHED BY M.C. SMITH IN 1909. I THEN PROTRACTED THE SECTION PLACING HEAVY EMPHASIS ON THESE 2 1/6 COR. TO LOCATE THE E 1/4 COR. BOTH OF BARRETT'S BEARING TREES FROM 1896 ARE GONE. SET E 1/4 COR. ON LINE WITH W 1/4, C W 1/6, & CE 1/6, BY DOUBLING THE DISTANCE FROM THE COMPUTED C 1/4 COR. TO THE CE 1/6 COR. FIT OCCUPATION WITHIN REASON & FIT EDM. TRAVERSE OF SECTION GOOD.



CERTIFIED CORRECT:

Frederic W. Zietlow

Registered Land Surveyor

DATE: 1-15-76

TIE SKETCH

(Show at least four ties)

MAINTENANCE RECORD

Date	Init.	Remarks
12-29-81	TH-NJ	HARRISON IN PLACE
12-15-82	KGC	OK " " "
3-3-86	GLSS	OK
3-2-95	MC	OK
5-14-96	SS	"
2-27-01	JG-MH	OK
8-2-06	JG	OK FENCE
12-27-11	ms	OK

