

## PUBLIC LAND SURVEY MONUMENT RECORD

TYPE OF MONUMENT: HARRISON (BROKEN-TOP)  
 ADAMS COUNTY COORDINATES, NAD 83 (2007)

N. 138198.530

E. 567947.525

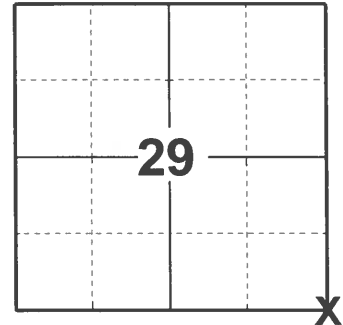
ELEVATION- \_\_\_\_\_ DATUM \_\_\_\_\_

FIELD WORK DATE: 04/26/2021

### BASIS FOR MONUMENT LOCATION

1976 - PLS 922 FOUND REMNANTS OF STAKE SET BY COUNTY SURVEYOR A.J. BARRETT IN 1896. ONE OF BARRETT'S BEARING TREES IS STILL INTACT. FIT EDM TRAVERSE OF SECTION GOOD.

2021 - PLS 2675 FOUND HARRISON (BROKEN-TOP) MONUMENT FLUSH WITH GROUND AND 4 WITNESS TREES. THE MONUMENT AGREES WITH ALL 4 WITNESS TREES. ACCEPTED HARRISON (BROKEN-TOP) MONUMENT AS THE CORNER LOCATION. SET 4 NEW TIES AND MEASURE TO THE 4 EXISTING WITNESS TREES.



**LOCATION**

(INDICATE CORNER BY "X")

SEAL:



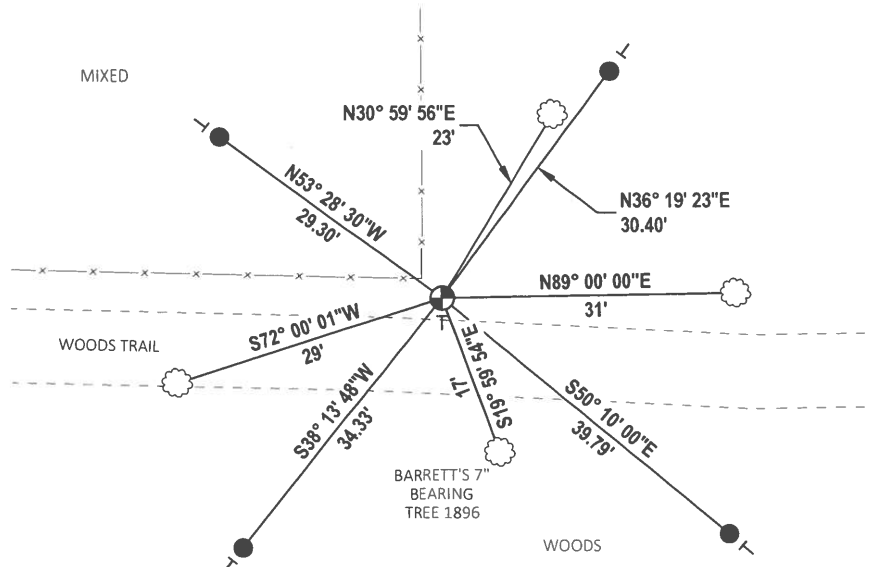
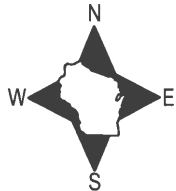
DATA SHOWN HERE ON THIS TIE SHEET IS CORRECT AND COMPLETE TO THE BEST OF MY KNOWLEDGE AND BELIEF.

PROFESSIONAL LAND SURVEYOR

DATE 5/19/21

### TIE SKETCH

NOTE: CORNER LANDS 2.3'± NORTH OF WOODS TRAIL.



- SET 3/4" x 18" IRON REBAR, 1.50#/FT
- ⊕ FOUND HARRISON (BROKEN-TOP) MONUMENT
- VINYL "T" POST
- WITNESS TREE

Survey Monument Record

SECTION 27

TYPE OF MONUMENT: STANDARD 30" HARRISON MARKER

TOWN 15N

STATE PLANE COORDINATES: N \_\_\_\_\_

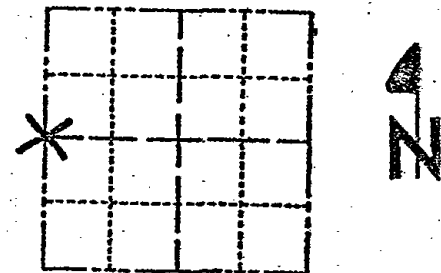
RANGE 7E

E \_\_\_\_\_

ELEVATION - M.S.L. DATUM: \_\_\_\_\_

THETA ANGLE: \_\_\_\_\_

FIELD BOOK: \_\_\_\_\_ PAGE \_\_\_\_\_



LOCATION (Indicated by 'X')

SEAL:

BASIS FOR MONUMENT LOCATION

(Use reverse side if necessary)

Show info such as: History of corner, with reference to Vol. and pg. dates, surveyor; exact description of monument replaced; if location computed, by taped or EDM traverse; landowner remarks, etc.

CHECKED ADAMS CO. SURVEY RECORDS FOR RESURVEYS & FOUND THAT IN 1876 CO. SURVEYOR WISE SET OUT NEW BEARING TREES, THESE ARE NOW LOST. IN 1938 CO. SURVEYOR PHILLIPS NOTED THAT HE SET OUT IRON POSTS 33' E & W OF THIS CORNER, THESE REFERENCE MONUMENTS ARE ALSO LOST. TO DETERMINE THE LOCATION OF THIS CORNER I SET IT ON LINE BETWEEN THE NORTHWEST AND SOUTHWEST CORNERS OF SECTION 27 OFF EAST & WEST FENCES. USING THIS LOCATION UPON PROTRACTING THIS SECTION USING WISE'S C/Y CORNER WE FIT LOCAL OCCUPATION CONDITIONS: VERY GOOD. EDM - THEODOLITE TRAVERSE.



CERTIFIED CORRECT:

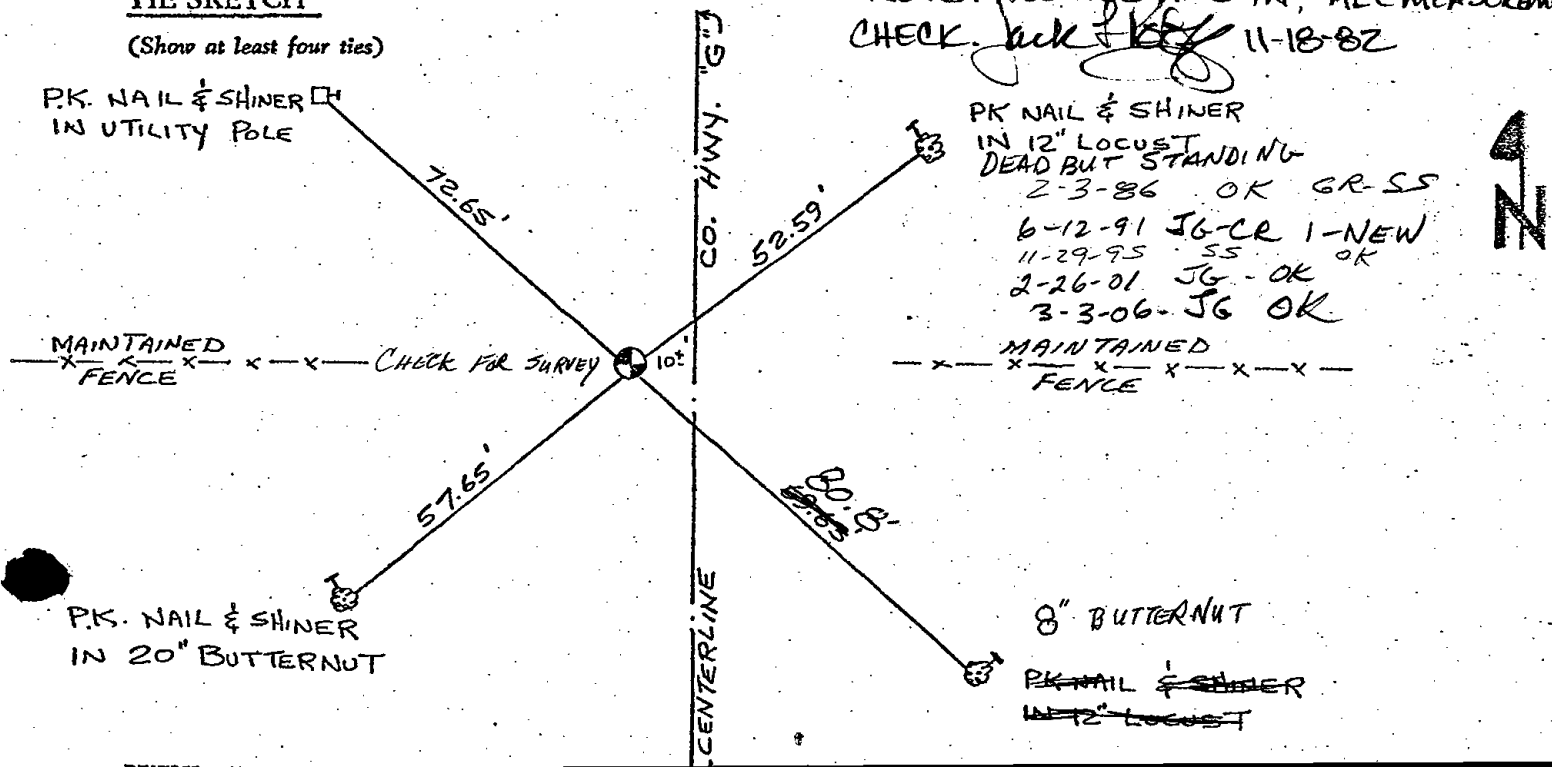
*Frederic W. Zietlow*  
Registered Land Surveyor

DATE: July 19, 1977

NOTE: THIS DOSSIER REPLACES THE DOSSIER PREPARED BY MYSELF DATED JULY 19, 1976. OUR EDM WAS GIVING US FAULTY DATA AT THAT TIME ALSO SEE NEW SECTION SUMMARY SHEET DATED JULY 19, 1977

TIE SKETCH

(Show at least four ties)



NOTE: ALL TIES ARE IN, ALL MEASUREMENTS CHECK. *Jack & Kelly* 11-18-82

8" BUTTERNUT  
PK. NAIL & SHINER  
IN 12" LOCUST

ADAMS COUNTY

Survey Monument Record

TYPE OF MONUMENT: STANDARD 30" HARRISON MARKER

STATE PLANE COORDINATES: N \_\_\_\_\_

E \_\_\_\_\_

ELEVATION — M.S.L. DATUM: \_\_\_\_\_

THETA ANGLE: \_\_\_\_\_

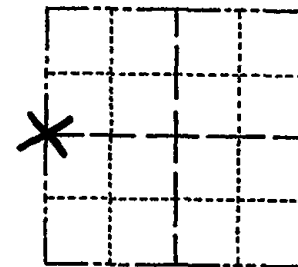
FIELD BOOK: \_\_\_\_\_ PAGE \_\_\_\_\_

CORNER NO. 97

SECTION 27

TOWN 15N

RANGE 7E



LOCATION  
(Indicated by 'X')

SEAL:



BASIS FOR MONUMENT LOCATION

(Use reverse side if necessary)

Show info such as: History of corner, with reference to Vol. and pg. dates, surveyor; exact description of monument replaced; if location computed, by taped or EDM traverse; landowner remarks, etc.

CHECKED ADAMS CO. SURVEY RECORDS FOR RESURVEYS & FOUND THAT IN 1876 CO. SURVEYOR WISE SET OUT NEW BEARING TREES, THESE ARE NOW LOST. IN 1938 CO. SURVEYOR PHILLIPS NOTED THAT HE SET OUT IRON POSTS 33 E & W OF THIS CORNER, THESE REFERENCE MONUMENTS ARE ALSO LOST. TO DETERMINE THE LOCATION OF THIS CORNER I SET IT ON LINE BETWEEN THE NORTHWEST AND SOUTHWEST CORNERS OF SECTION 27 OFF EAST & WEST FENCES. USING THIS LOCATION UPON PROTRACTING THIS SECTION USING WISE'S CVY CORNER WE FIT LOCAL OCCUPATION CONDITIONS VERY GOOD. EDM - THEODOLITE TRAVERSE.

CERTIFIED CORRECT:

*Frederic W. Zietlow*

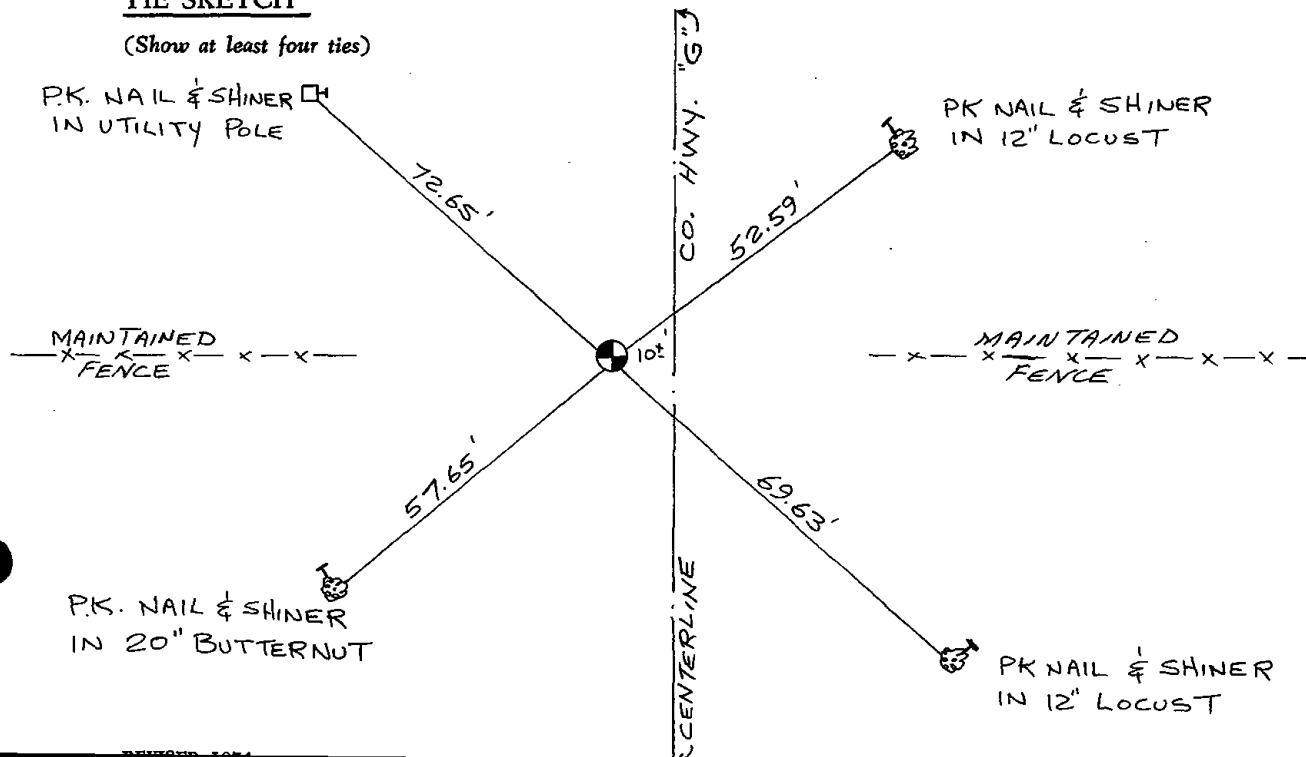
Registered Land Surveyor

DATE: JULY 19, 1977

NOTE: THIS DOSSIER REPLACES THE DOSSIER PREPARED BY MYSELF DATED JULY 19, 1976. OUR EDM WAS GIVING US FAULTY DATA AT THAT TIME ALSO SEE NEW SECTION SUMMARY SHEET DATED JULY 19, 1977

TIE SKETCH

(Show at least four ties)



MAINTENANCE RECORD

Date	Init.	Remarks
12-28-81	TH-NJ	MON + TUES O.K

Survey Monument Record

TYPE OF MONUMENT: STANDARD 30" HARRISON MARKER

STATE PLANE COORDINATES: N \_\_\_\_\_

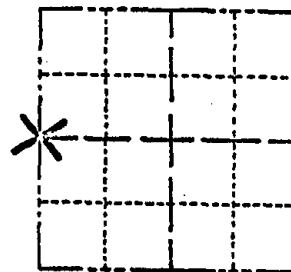
E \_\_\_\_\_

ELEVATION — M.S.L. DATUM: \_\_\_\_\_

THETA ANGLE: \_\_\_\_\_

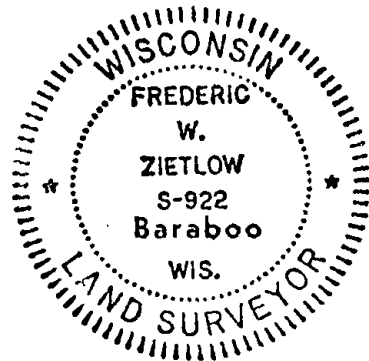
FIELD BOOK: \_\_\_\_\_ PAGE \_\_\_\_\_

CORNER NO. 97  
SECTION 27  
TOWN 15N  
RANGE 7E



LOCATION  
(Indicated by 'X')

SEAL:



BASIS FOR MONUMENT LOCATION

(Use reverse side if necessary)

Show info such as: History of corner, with reference to Vol. and pg, dates, surveyor; exact description of monument replaced; if location computed, by taped or EDM traverse; landowner remarks, etc.

CHECKED ADAMS Co. SURVEY RECORDS FOR RESURVEYS & FOUND THAT IN 1876 Co. SURVEYOR WISE SET OUT NEW BEARING TREES, THESE ARE NOW LOST, IN 1938 Co. SURVEYOR PHILLIPS NOTED THAT HE SET OUT IRON POSTS 33' E & W OF THIS CORNER, THESE REFERENCE MONUMENTS ARE ALSO LOST. TO DETERMINE THE LOCATION OF THIS CORNER I SET IT ON LINE BETWEEN THE NORTHWEST AND SOUTHWEST CORNERS OF SECTION 27 OFF EAST & WEST FENCES. USING THIS LOCATION UPON PROTRACTING THIS SECTION USING WISE'S CVY CORNER WE FIT LOCAL OCCUPATION CONDITIONS VERY GOOD. EDM - THEODOLITE TRAVERSE.

NOTE: THIS DOSSIER REPLACES THE DOSSIER PREPARED BY MYSELF DATED JULY 19, 1976. OUR EDM WAS GIVING US FAULTY DATA AT THAT TIME ALSO SEE NEW SECTION SUMMARY SHEET DATED JULY 19, 1977

CERTIFIED CORRECT:  
*Frederic W. Zietlow*  
Registered Land Surveyor  
DATE: JULY 19, 1977

TIE SKETCH

(Show at least four ties)

