

29  
SECTION

15  
TOWN

07  
RANGE

# ADAMS COUNTY

COUNTY CORNER NO: 104

ROMPORTOL ID: 41507290020

## PUBLIC LAND SURVEY MONUMENT RECORD

TYPE OF MONUMENT: HARRISON  
ADAMS COUNTY COORDINATES, NAD 83 (2007)

N. 138213.798

E. 565317.581

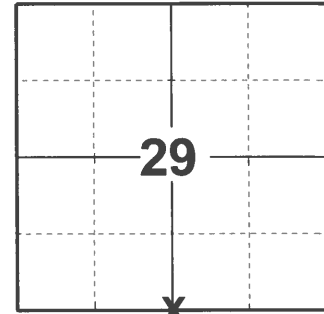
ELEVATION- \_\_\_\_\_ DATUM \_\_\_\_\_

FIELD WORK DATE: 04/26/2021

### BASIS FOR MONUMENT LOCATION

1976 - PLS 922 FOUND REMNANTS OF DETERIORATED STUMP WHICH WAS AN M.C. SMITH BEARING TREE IN 1915. FIT FENCE CORNER GOOD AND FIT EDM TRAVERSE OF SECTION GOOD.

2021 - PLS 2675 FOUND HARRISON MONUMENT FLUSH WITH GROUND AND 2 WITNESSES. THE MONUMENT AGREES WITH THE EXISTING WITNESSES. ACCEPTED HARRISON MONUMENT AS THE CORNER LOCATION. SET 4 NEW TIES AND MEASURED TO 2 UNKNOWN AND 2 EXISTING WITNESSES.



LOCATION

(INDICATE CORNER BY "X")

SEAL:



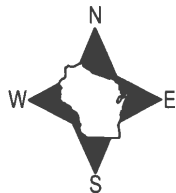
DATA SHOWN HERE ON THIS TIE SHEET IS CORRECT AND COMPLETE TO THE BEST OF MY KNOWLEDGE AND BELIEF.

PROFESSIONAL LAND SURVEYOR

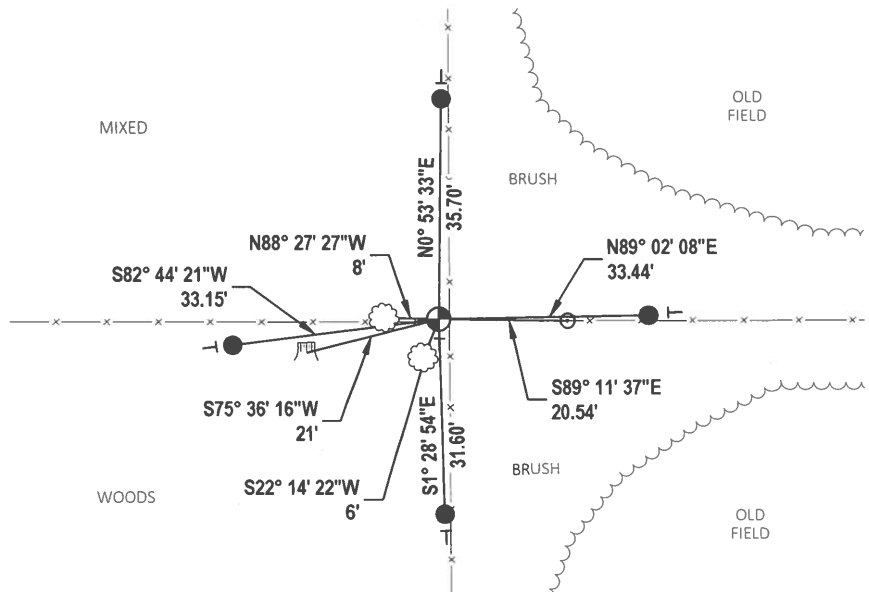
DATE 5/19/21

### TIE SKETCH

NOTE: CORNER LANDS 1.75± WEST OF NORTH - SOUTH FENCE LINE.



- SET 3/4" x 18" IRON REBAR, 1.50#/FT
- ⊕ FOUND HARRISON MONUMENT
- ⌘ WITNESS STUMP
- VINYL "T" POST
- ⊗ WITNESS TREE
- ⊙ POST



# ADAMS COUNTY

## Survey Monument Record

TYPE OF MONUMENT: 3/4" X 24" IRON BAR, HARRISON To Be SET Spring 1976

STATE PLANE COORDINATES: N \_\_\_\_\_

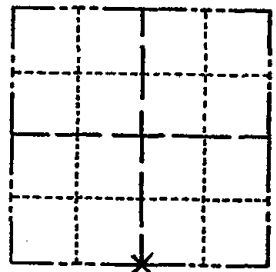
E \_\_\_\_\_

ELEVATION — M.S.L. DATUM: \_\_\_\_\_

THETA ANGLE: \_\_\_\_\_

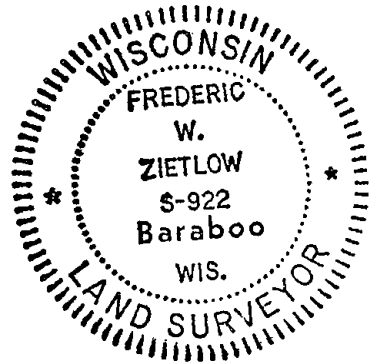
FIELD BOOK: \_\_\_\_\_ PAGE \_\_\_\_\_

CORNER NO. 850 <sup>(104)</sup>  
 SECTION 29  
 TOWN 15N  
 RANGE 7E



LOCATION  
(Indicated by 'X')

SEAL:



CERTIFIED CORRECT:

*Frederic W. Zietlow*

Registered Land Surveyor

DATE: 1-15-76

### BASIS FOR MONUMENT LOCATION

(Use reverse side if necessary)

Show info such as: History of corner, with reference to Vol. and pg, dates, surveyor; exact description of monument replaced; if location computed, by taped or EDM traverse; landowner remarks, etc.

FOUND REMNANTS OF DETERIORATED STUMP WHICH WAS AN M.C. SMITH BEARING TREE IN 1915 FIT FENCE CORNER GOOD & FIT EDM. TRAVERSE OF SECTION GOOD.

CORNER O.K. 5-20-76 GR-SS

### MAINTENANCE RECORD

Date	Init.	Remarks
12-28-81	TH-NJ	TIES + MON O.K.
3-3-86	GR	O.K.
11-20-91	KZ-JG	ALL O.K.
11-29-95	SS	O.K.
2-27-01	JG-MH	1-NEW MON. O.K.
8-8-06	JG	O.K.
12-27-11	MS	O.K.

### TIE SKETCH

(Show at least four ties)

