

28
SECTION

15
TOWN

07
RANGE

ADAMS COUNTY

COUNTY CORNER NO: 107

ROMPORTOL ID: 41507280000

PUBLIC LAND SURVEY MONUMENT RECORD

TYPE OF MONUMENT: HARRISON (BROKEN-TOP)

ADAMS COUNTY COORDINATES, NAD 83 (2007)

N. 138227.740

E. 573168.462

ELEVATION- _____ DATUM _____

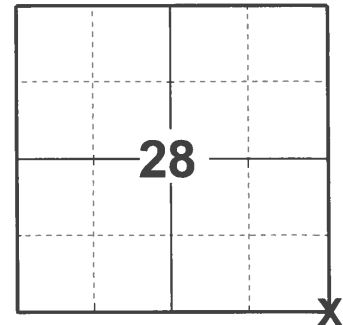
FIELD WORK DATE: 04/19/2021

BASIS FOR MONUMENT LOCATION

1972 - PLS 981 FOUND 1/2" REBAR AND REPLACED WITH HARRISON MONUMENT.

1980 - PLS 584 RESET EXISTING HARRISON TO NEW LOCATION WHERE A 1/2" IRON BAR WAS FOUND AND TESTIFIED THAT THE IRON BAR WAS THE CORNER SET AS SECTION CORNER MANY YEARS AGO. 1/2" BAR WAS SET BY FRED ZIETLOW. THE BAR REPLACED A STONE FOUND. STONE WAS CALLED FOR IN OLD COUNTY SURVEYOR NOTES BY ZENUS WISE.

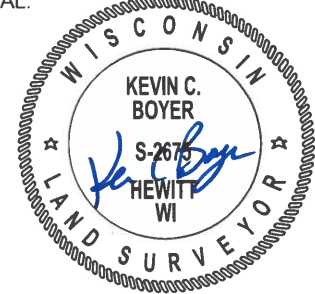
2021 - PLS 2675 FOUND HARRISON (BROKEN-TOP) 12" BELOW GROUND SURFACE AND 1 WITNESS. MONUMENT AGREES WITH THE WITNESS. ACCEPTED THE HARRISON MONUMENT AS THE CORNER LOCATION. SET 4 NEW TIES AND MEASURED TO THE EXISTING WITNESS.



LOCATION

(INDICATE CORNER BY "X")

SEAL:



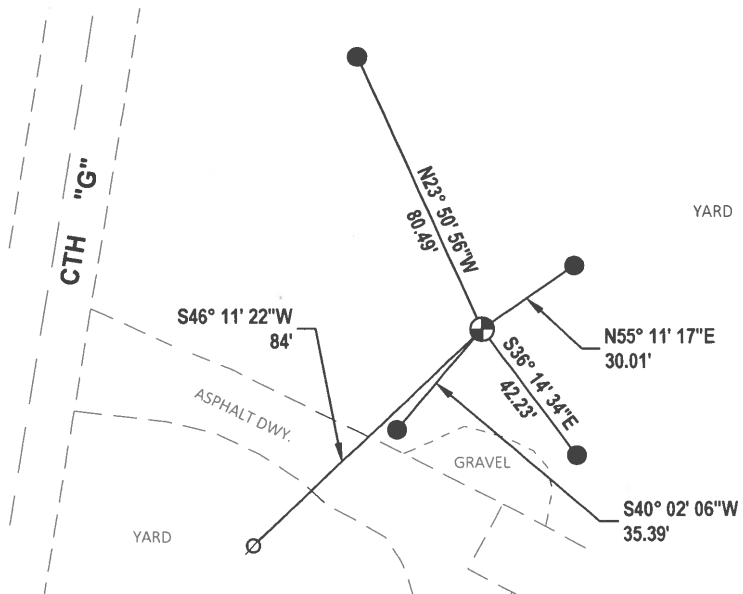
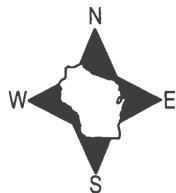
DATA SHOWN HERE ON THIS TIE SHEET IS CORRECT AND COMPLETE TO THE BEST OF MY KNOWLEDGE AND BELIEF.

PROFESSIONAL LAND SURVEYOR

DATE 5/19/21

TIE SKETCH

NOTE: CORNER LANDS 115± EAST OF THE CENTERLINE OF CTH "G".

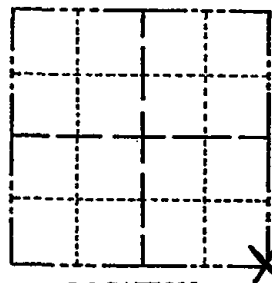


- SET 3/4" x 18" IRON REBAR, 1.50#/FT
- ⊕ FOUND HARRISON (BROKEN TOP) MONUMENT
- ∅ WITNESS POWERPOLE

Government Land Corner Certificate

ADAMS County
 TYPE OF MONUMENT: HARRISON
 STATE PLANE COORDINATES: N _____
 E _____
 ELEVATION — M.S.L. DATUM: _____
 THETA ANGLE: _____
 FIELD BOOK: 87 PAGE 131
 DRAWN BY: S. HAUMSCHILD

CORNER NO. 107
 SECTION 28
 TOWN 15
 RANGE 7



LOCATION
 (Indicated by 'X')

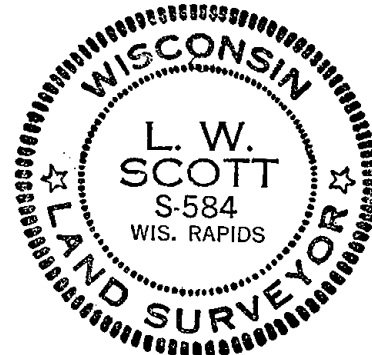
BASIS FOR MONUMENT LOCATION

Show info such as: History of corner, with reference to Vol. and pg., dates, surveyor; exact description of monument replaced; if location computed, by taped or EDM traverse; landowner remarks, etc. (Use reverse side if necessary)

Reset existing Harrison to new location where a 1/2" iron bar was found and testified that the iron bar was the corner set as Section corner many years ago. Drawing shows in the old location of Harrison in relation to the new location.

The 1/2" iron bar was set by Fred Zietlow. The bar replaces a stone found. Stone called for in old County Surveyor notes by Zenus Wise. The 46" Black Oak shown in this sketch is Wise' BT.

SEAL:



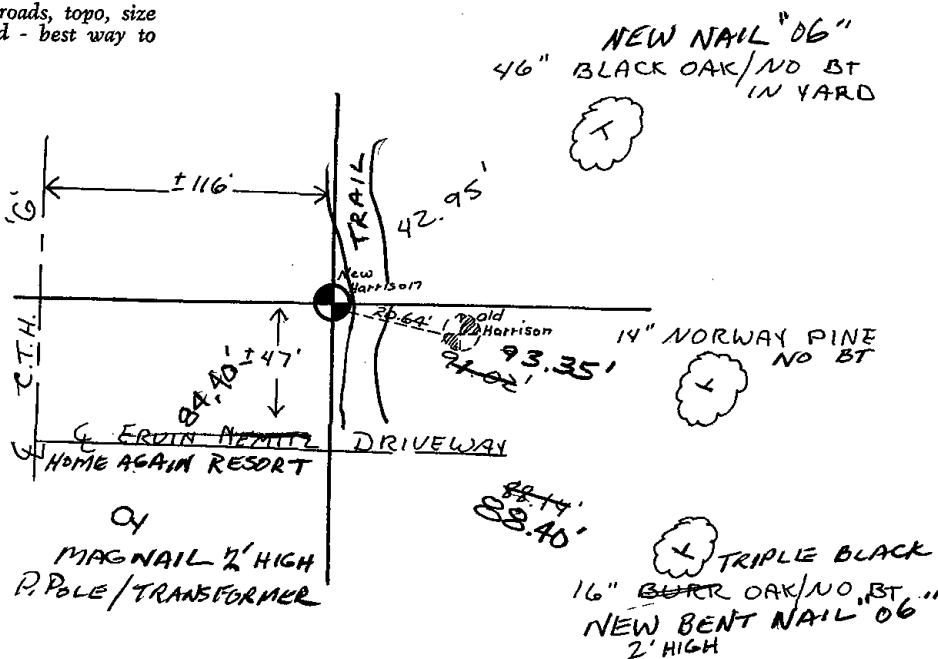
DATA SHOWN HERE ON
 CERTIFIED CORRECT.

L. W. Scott
 Registered Land Surveyor

DATE: 12/22/80

TIE SKETCH

Show at least four ties, also fence lines, roads, topo, size and type of witness trees' and if off road - best way to arrive at corner.



ADAMS COUNTY

Survey Monument Record

TYPE OF MONUMENT: "30" HARRISON

STATE PLANE COORDINATES: N _____

E _____

ELEVATION — M.S.L. DATUM: _____

THETA ANGLE: _____

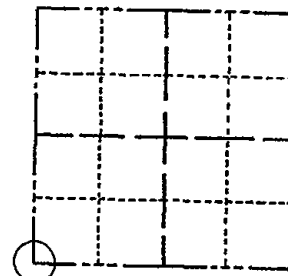
FIELD BOOK: 106 PAGE _____

CORNER NO. 118 (107)

SECTION 27

TOWN 15

RANGE 7



LOCATION
(Indicated by 'X')

SEAL:

BASIS FOR MONUMENT LOCATION

(Use reverse side if necessary)

Show info such as: History of corner, with reference to Vol. and pg. dates, surveyor; exact description of monument replaced; if location computed, by taped or EDM traverse; landowner remarks, etc.

Found $\frac{1}{2}$ " R-bar and set monument

May 7, 1972

Sam T. Mullen R.L.S. S-981

Corner o.k. 10-29-76 RN-55

*Checked and found correct
10/29/76*

CERTIFIED CORRECT:

Registered Land Surveyor

DATE: _____

TIE SKETCH

(Show at least four ties)

