

27
SECTION

15
TOWN

07
RANGE

ADAMS COUNTY

COUNTY CORNER NO: 108

ROMPORTOL ID: 41507270020

PUBLIC LAND SURVEY MONUMENT RECORD

TYPE OF MONUMENT: CALCULATED POSITION

ADAMS COUNTY COORDINATES, NAD 83 (2007)

N. 138219.675

E. 575780.934

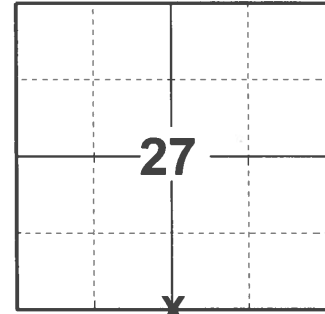
ELEVATION- - - - DATUM - - - -

FIELD WORK DATE: 04/28/2021

BASIS FOR MONUMENT LOCATION

1976 - PLS 922 RAN EDM TRAVERSE OF SECTION 27 AND RETRACED WEST LINE OF WILLIAMS SUBDIVISION. AFTER EVALUATING PRIOR SURVEY WORK DONE BY COUNTY SURVEYOR WISE AND H.C. AMUNDSON'S PLAT, PLS 922 ACCEPTED AMUNDSON'S IRON STAKE AT SOUTHWEST CORNER OF LOT 16 AS THE MEANDER CORNER, EVEN THOUGH WEST LINE OF PLAT AND THE NORTH - SOUTH 1/4 LINE ARE NOT THE SAME.

2021 - PLS 2675 FOUND HARRISON (BROKEN-TOP) MONUMENT MEANDER CORNER 16" BELOW GROUND SURFACE AND 2 TIES TO THE MEANDER CORNER. MEANDER CORNER AGREES WITH WITH TIES. ACCEPTED HARRISON (BROKEN-TOP) MONUMENT AS THE LOCATION OF THE MEANDER CORNER. CALCULATED CORNER POSITION BY HOLDING A STRAIGHT LINE FROM NORTH 1/4 CORNER DOWN AND THROUGH MEANDER CORNER 386.98' SOUTH PER SECTION SUMMARY BY PLS 922 DATED JULY 19, 1977.



LOCATION

(INDICATE CORNER BY "X")

SEAL:



DATA SHOWN HERE ON THIS TIE SHEET IS CORRECT AND COMPLETE TO THE BEST OF MY KNOWLEDGE AND BELIEF.

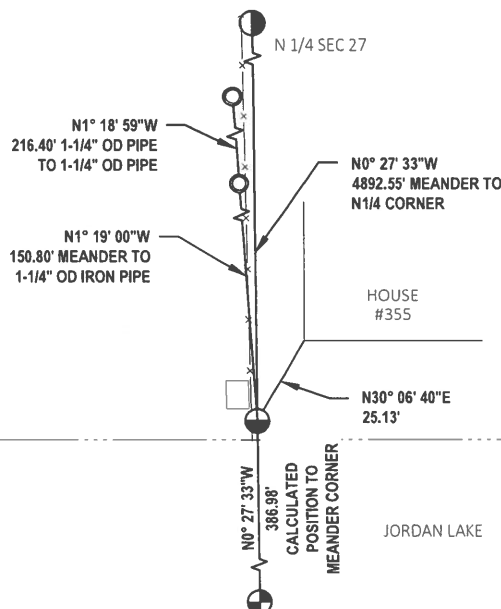
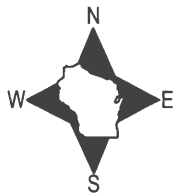
PROFESSIONAL LAND SURVEYOR

DATE 5/19/21

- TIE SKETCH

NOTE 1: MEANDER CORNER LANDS 25'±
SOUTHWEST OF HOUSE #355 CORNER.

NOTE 2: MEANDER CORNER LANDS 1.5'± EAST OF
FENCE LINE.



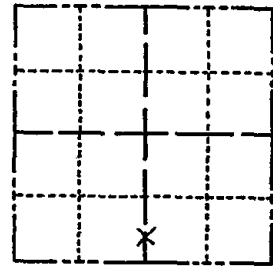
- FOUND 1-1/4" O.D. IRON PIPE
- ⊕ CALCULATED POSITION
- FOUND HARRISON (BROKEN TOP) MEANDER CORNER
- ⊙ SECTION CORNER

ADAMS COUNTY

Survey Monument Record

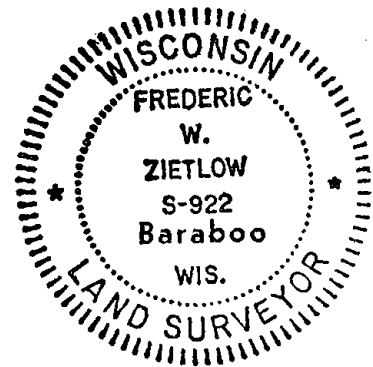
TYPE OF MONUMENT: HARRISON 30"
 STATE PLANE COORDINATES: N _____
 E _____
 ELEVATION — M.S.L. DATUM: _____
 THETA ANGLE: _____
 FIELD BOOK: _____ PAGE _____

CORNER NO. 1008
 SECTION 27
 TOWN T.15N.
 RANGE R.7E.



LOCATION
(Indicated by 'X')

SEAL:



BASIS FOR MONUMENT LOCATION

(Use reverse side if necessary)

Show info such as: History of corner, with reference to Vol. and pg, dates, surveyor; exact description of monument replaced; if location computed, by taped or EDM traverse; landowner remarks, etc.

RAN E.D.M. TRAVERSE OF SEC. 27 AND RETRACKED WEST LINE OF WILLIAMS SUBDIVISION. AFTER CAREFULLY EVALUATING PRIOR SURVEY WORK DONE BY CO. SURVEYOR WISE & H. C. AMUNDSON'S PLAT I ACCEPTED AMUNDSON'S IRON STAKE AT THE SW CORNER OF LOT 16 AS THE MEANDER CORNER, EVEN THOUGH THE WEST LINE OF THE PLAT AND THE N-S 1/4 LINE ARE NOT THE SAME.

CERTIFIED CORRECT:

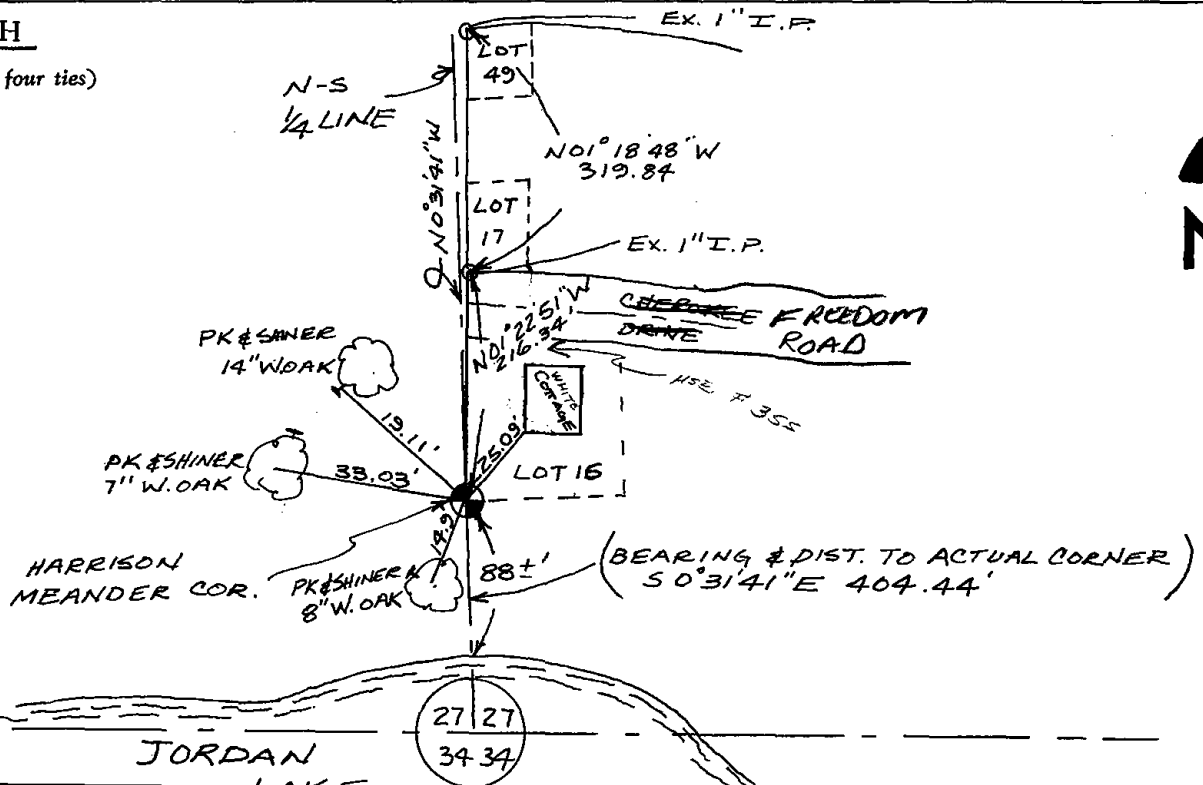
Frederic W. Zietlow

Registered Land Surveyor

DATE: JULY 19, 1976

TIE SKETCH

(Show at least four ties)



MAINTENANCE RECORD

Date	E.S.	Remarks
12-29-81	TH-WJ	MON. & TIES O.K
3-24-86	GR-JS	" " "
6-12-91	JG-CR	" " "
2-12-96	SS	OK
3-5-01	MH-JB	ALL OK
3-3-06	JC	OK