

27
SECTION

15
TOWN

07
RANGE

ADAMS COUNTY

COUNTY CORNER NO: 109

ROMPORTOL ID: 41507270000

PUBLIC LAND SURVEY MONUMENT RECORD

TYPE OF MONUMENT: CALCULATED POSITION

ADAMS COUNTY COORDINATES, NAD 83 (2007)

N. 138212.044

E. 578385.963

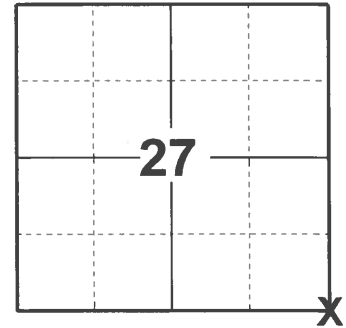
ELEVATION- - - - DATUM - - - -

FIELD WORK DATE: 04/28/2021

BASIS FOR MONUMENT LOCATION

1982 - PLS 1444 FOUND 2" IRON PIPE USED BY OTHER SURVEYORS IN SEVERAL SURVEYS ACCEPTED AS CORRECT.

2021 - PLS 2675 CORNER AND MEANDER CORNER NOW FALL IN JORDAN LAKE IN 5'-8" OF WATER. CALCULATED CORNER POSITION BY DISTANCE - DISTANCE INTERSECTION FROM CALCULATED SOUTH 1/4 AND EAST 1/4 CORNERS IN SECTION 27 FROM PLS 922 SECTION SUMMARY DATED JULY 19, 1977. CALCULATED POSITION PUTS THE SOUTH LINE ON A NEAR STRAIGHT LINE. ACCEPTED THE CALCULATED POSITION AS THE CORNER LOCATION. SET 3/4" X 18" IRON REBAR, 1.5#/FT MEANDER CORNER 271.00' ON LINE BETWEEN THE EAST 1/4 AND CALCULATED SOUTHEAST CORNER.



LOCATION

(INDICATE CORNER BY "X")

SEAL:



DATA SHOWN HERE ON THIS TIE SHEET IS CORRECT AND COMPLETE TO THE BEST OF MY KNOWLEDGE AND BELIEF.

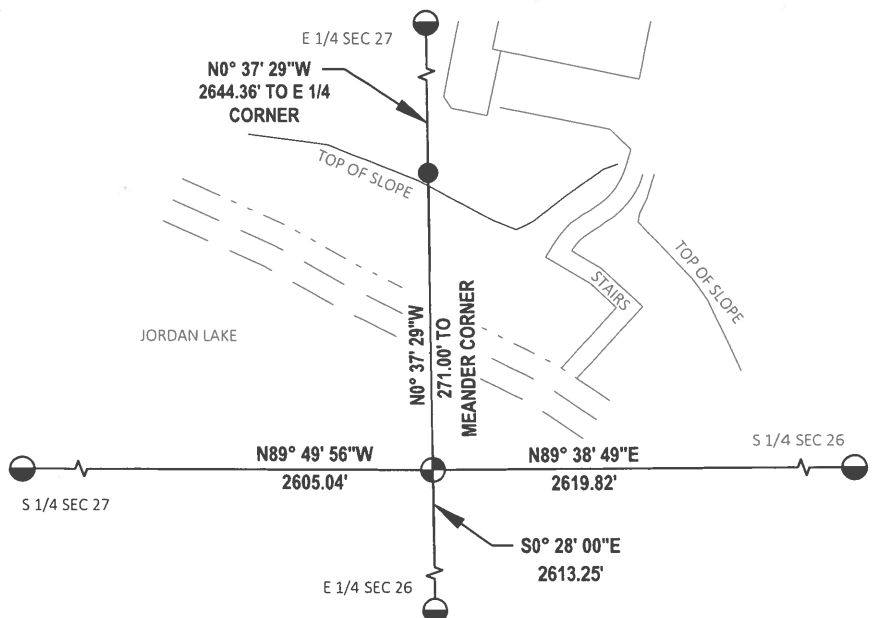
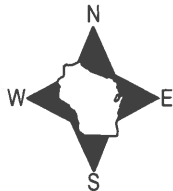
PROFESSIONAL LAND SURVEYOR

DATE 5/19/21

TIE SKETCH

NOTE 1: MEANDER CORNER LANDS 2.5± NORTH OF THE TOP OF SLOPE.

NOTE 2: MEANDER CORNER IS 10" BELOW YARD SURFACE.

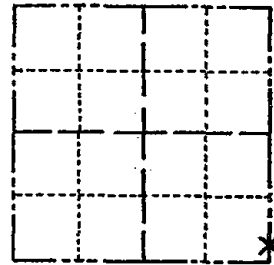


- SET 3/4" x 18" IRON REBAR, 1.50#/FT MEANDER CORNER
- ⊕ CALCULATED POSITION
- SECTION CORNER

Government Land Corner Certificate

ADAMS County
TYPE OF MONUMENT: 2" IRON PIPE
STATE PLANE COORDINATES: N _____
E _____
ELEVATION — M.S.L. DATUM: _____
THETA ANGLE: _____
FIELD BOOK: 88 PAGE 111
DRAWN BY: LANCE HABECK

CORNER NO. 109
SECTION 27
TOWN 15
RANGE 7



BASIS FOR MONUMENT LOCATION

Show info such as: History of corner, with reference to Vol. and pg., dates, surveyor; exact description of monument replaced; if location computed, by taped or EDM traverse; landowner remarks, etc. (Use reverse side if necessary)

Found 2" iron pipe used by other surveyors in several surveys and accepted as correct.

SEAL:



DATA SHOWN HERE ON CERTIFIED CORRECT:

Lance J. Habeck
Registered Land Surveyor

DATE: 4/14/82

TIE SKETCH

Show at least four ties, also fence lines, roads, topo, size and type of witness trees and if off road - best way to arrive at corner.

