

26
SECTION

15
TOWN

07
RANGE

ADAMS COUNTY

COUNTY CORNER NO: 111

ROMPORTOL ID: 41507260000

PUBLIC LAND SURVEY MONUMENT RECORD

TYPE OF MONUMENT: HARRISON
ADAMS COUNTY COORDINATES, NAD 83 (2007)

N. 138230.602

E. 583636.214

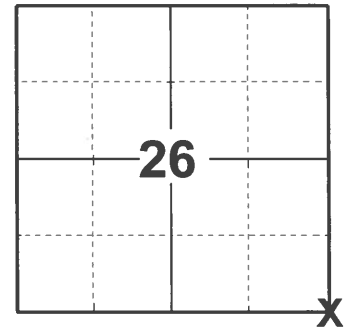
ELEVATION: DATUM

FIELD WORK DATE: 04/14/2021

BASIS FOR MONUMENT LOCATION

1973 - PLS 878 ESTABLISHED CORNER LOCATION FROM DATA GATHERED FROM TRAVERSE OF ENTIRE SECTION. COULD NOT SET ENTIRE MONUMENT BECAUSE OF ROCK CONDITIONS.

2021 - PLS 2675 FOUND HARRISON MONUMENT 4" BELOW ROAD SURFACE, 2 TIES AND 1 WITNESS. THE MONUMENT AGREES WITH THE TIES AND WITNESS. ACCEPTED THE HARRISON MONUMENT AS THE CORNER LOCATION. SET 2 NEW TIES AND MEASURED TO THE EXISTING TIES AND WITNESS.



LOCATION

(INDICATE CORNER BY "X")

SEAL:



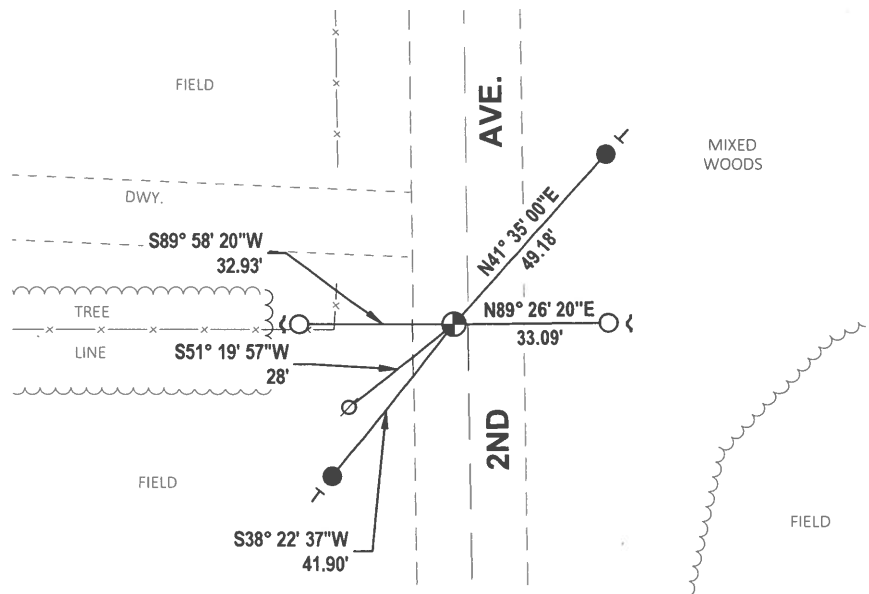
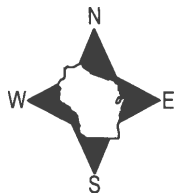
DATA SHOWN HERE ON THIS TIE SHEET IS CORRECT AND COMPLETE TO THE BEST OF MY KNOWLEDGE AND BELIEF.

PROFESSIONAL LAND SURVEYOR

DATE 5/17/21

TIE SKETCH

NOTE: CORNER LAND 3± WEST OF THE CENTERLINE OF 2ND AVE.



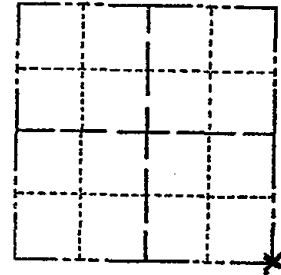
- SET 3/4" x 18" IRON REBAR, 1.50#/FT
- FOUND 3/4" IRON ROD
- ⊙ FOUND HARRISON MONUMENT
- ∅ WITNESS POWER POLE
- ~ STEEL FENCE POST
- | VINYL "T" POST

ADAMS COUNTY

Survey Monument Record

TYPE OF MONUMENT: Top 12" of Harrison standard
 STATE PLANE COORDINATES: N. _____
 E. _____
 ELEVATION — M.S.L. DATUM: _____
 THETA ANGLE: _____
 FIELD BOOK: 107 PAGE 59

CORNER NO. 234
 SECTION 26
 TOWN 15
 RANGE 7



LOCATION
(Indicated by 'X')

SEAL:



BASIS FOR MONUMENT LOCATION

(Use reverse side if necessary)

Show info such as: History of corner, with reference to Vol. and pg, dates, surveyor; exact description of monument replaced; if location computed, by taped or EDM traverse; landowner remarks, etc.

Location established from data gathered from a traverse of the entire section. Could not set entire monument because of rock conditions.

Corner & ties O.K. 10-29-76 RN-SS

MAINTENANCE RECORD

Date	Init.	Remarks
12-30-81	TH-NJ	MON + TIES O.K.
2-3-86	GR-SS	3 NEW TIES
5-3-91	SS-JG	1-GONE, ALL OK
2-12-96	SS	5 REMAINING TIES - OK
2-2-01	26-MH	2 NEW TIES
3-1-06	JG	5 TIES REMAIN
3-17-11	SS	1 NEW TIE

CERTIFIED CORRECT:

Anthony B. Kiedrowski
Registered Land Surveyor

DATE: 2-22-73

TIE SKETCH

(Show at least four ties)

