

33
SECTION

15
TOWN

07
RANGE

ADAMS COUNTY

COUNTY CORNER NO: 117

ROMPORTOL ID: 41507332000

PUBLIC LAND SURVEY MONUMENT RECORD

TYPE OF MONUMENT: CALCULATED POSITION
ADAMS COUNTY COORDINATES, NAD 83 (2007)

N. 135572.472

E. 573152.318

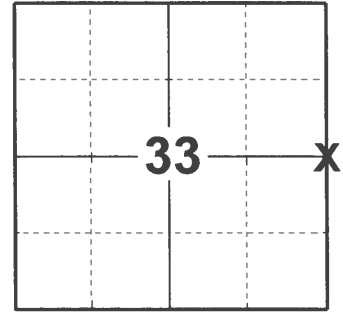
ELEVATION- DATUM

FIELD WORK DATE: 04/27/2021

BASIS FOR MONUMENT LOCATION

1977 - PLS 1103 RAN EDM TRANSIT TRAVERSE AROUND SECTION 33-15-7 TO DETERMINE SEARCH AREA. SEARCH AREA FALLS WITHIN BLUE LAKE. FOUND NO EVIDENCE OF THE ORIGINAL CORNER OR ANY REMONUMENTATION. SET CORNER ON LINE BETWEEN ADJACENT SECTION CORNERS BY SINGLE PROPORTIONATE MEASURE.

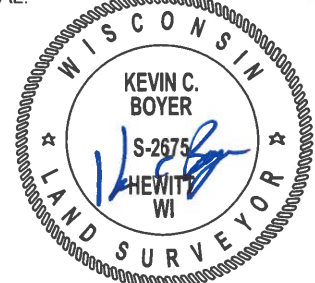
2021 - PLS 2675 CORNER LANDS IN BLUE LAKE. COMPUTED CORNER ON A STRAIGHT LINE EQUIDISTANT BETWEEN THE NORTHEAST AND SOUTHEAST CORNERS OF SECTION 33. THIS LOCATION AGREES WITH BOTH FOUND TIES. ACCEPTED THE COMPUTED LOCATION AS THE CORNER LOCATION. MEASURED TO FOUND TIES, 2 PROPERTY IRONS AND TO THE ADJACENT SECTION CORNERS.



LOCATION

(INDICATE CORNER BY "X")

SEAL:



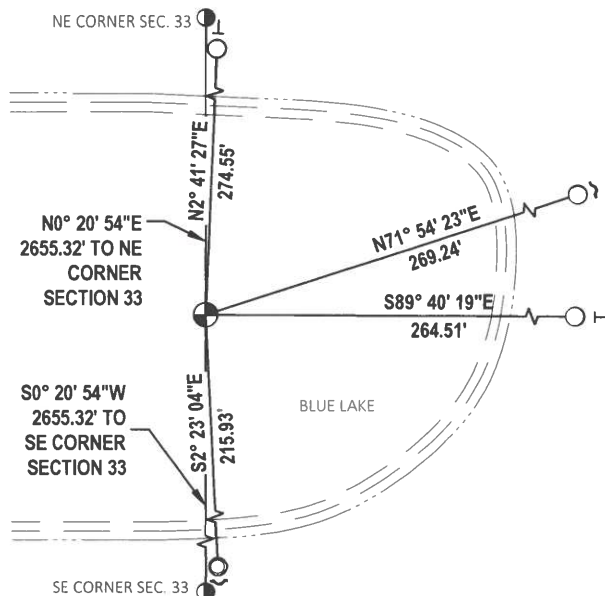
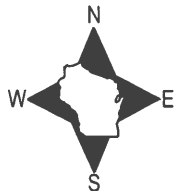
DATA SHOWN HERE ON THIS TIE SHEET IS CORRECT AND COMPLETE TO THE BEST OF MY KNOWLEDGE AND BELIEF.

PROFESSIONAL LAND SURVEYOR

DATE 5/19/21

TIE SKETCH

NOTE: CORNER LANDS IN BLUE LAKE 434± WEST OF CTH "G".



- FOUND 3/4" IRON ROD
- FOUND 1-1/4" O.D. IRON PIPE
- ⊕ CALCULATED POSITION
- ┌ STEEL FENCE POST
- └ VINYL "T" POST
- FOUND SECTION CORNER

ADAMS COUNTY

Survey Monument Record

TYPE OF MONUMENT: Witness Monuments Only

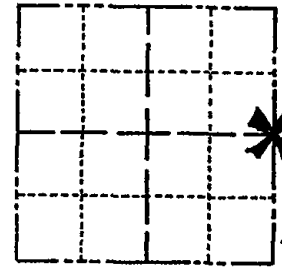
STATE PLANE COORDINATES: N _____
E _____

ELEVATION — M.S.L. DATUM: _____

THETA ANGLE: _____

FIELD BOOK: _____ PAGE _____

CORNER NO. 117
SECTION 33
TOWN 15 N
RANGE 7 E



LOCATION
(Indicated by 'X')

BASIS FOR MONUMENT LOCATION

(Use reverse side if necessary)

Show info such as: History of corner, with reference to Vol. and pg, dates, surveyor; exact description of monument replaced; if location computed, by taped or EDM traverse; landowner remarks, etc.

SEAL:

Ran EDM/Transit traverse around Section 33-15-7 to determine search areas.

Search area for this corner falls within Pond (Blue Lake).

Could find no evidence of the original corner or any remonumsntation.

Set corner on line between adjacent section corners by single proportionate measure.



CERTIFIED CORRECT:

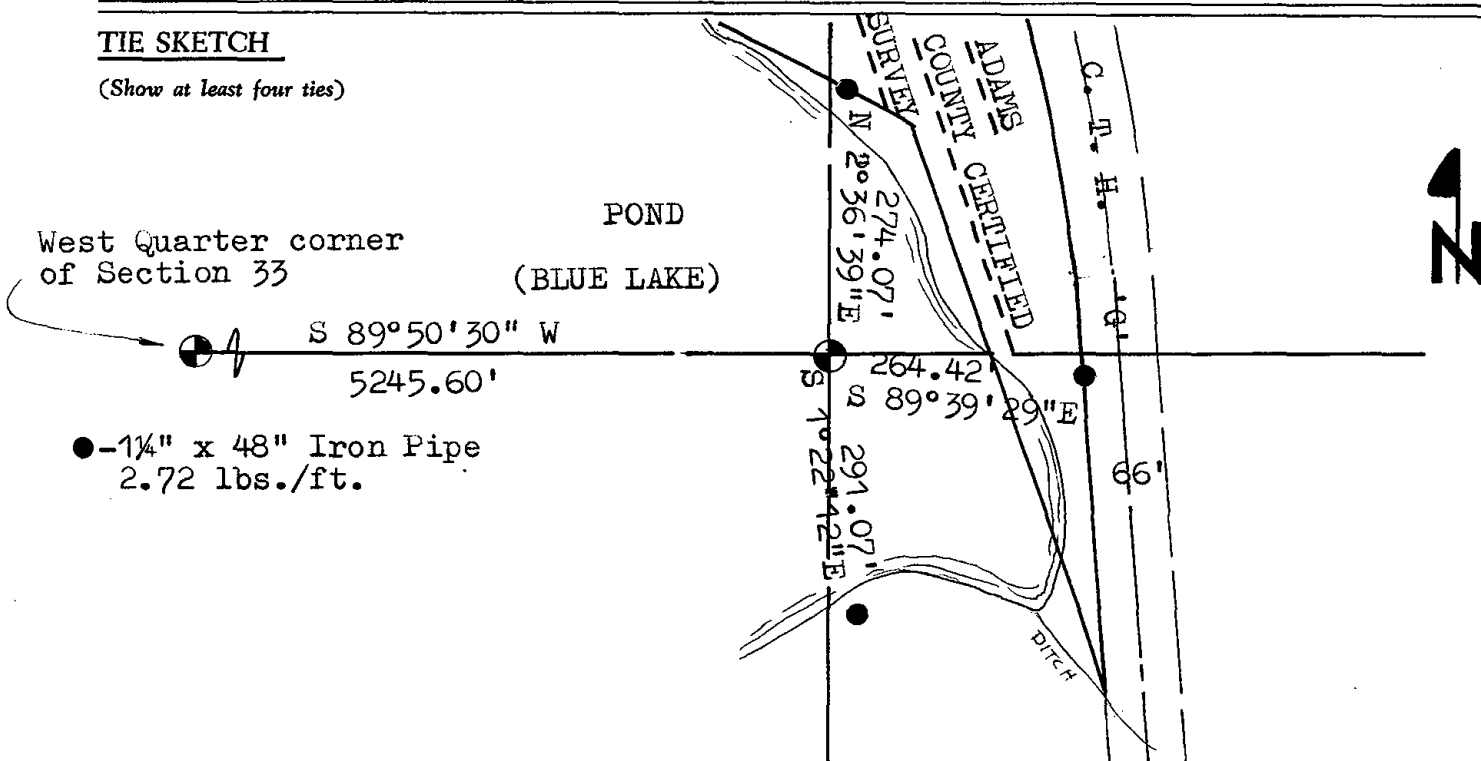
Dale C Hagen

Registered Land Surveyor

DATE: Feb. 1, 1977

TIE SKETCH

(Show at least four ties)



West Quarter corner of Section 33

POND (BLUE LAKE)

S 89°50'30" W
5245.60'

N 20°36'39" E
274.07'

S 89°39'29" E
264.42'

S 70°22'42" E
291.07'

● -1 1/4" x 48" Iron Pipe
2.72 lbs./ft.

DITCH



MAINTENANCE RECORD

Date	Init.	Remarks
12-30-81	TH-NJ	MON + TIES O.K
2-3-86	GR-SS	" "
5-3-91	JG-SS	" " "
2-26-01	JG	OK
3-01-06	JG	OK