

SECTION 31 TOWN 15 RANGE 07

ADAMS COUNTY

COUNTY CORNER NO: 122
 ROMPORTOL ID: 41507310020

PUBLIC LAND SURVEY MONUMENT RECORD

TYPE OF MONUMENT: HARRISON
 ADAMS COUNTY COORDINATES, NAD 83 (2007)

N. 132909.361
 E. 559995.162

ELEVATION- _____ DATUM _____

FIELD WORK DATE: 10/03/2017

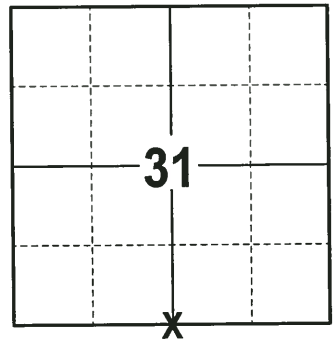
BASIS FOR MONUMENT LOCATION

1977 - PLS 922 RESEARCHED ADAMS COUNTY SURVEY RECORDS AND FOUND THAT THERE WERE NO RESURVEYS ON FILE. ALL EVIDENCE OF THE ORIGINAL CORNER IS GONE. SET THIS CORNER BY THE SINGLE PROPORTIONATE METHOD. SET HARRISON MONUMENT AT THE CORNER LOCATION AND TIED OUT.

1991 - PLS (UNKNOWN) FOUND A PK NAIL AT THE CORNER BUT COULD NOT FIND THE HARRISON MONUMENT, RE-TIED THE CORNER.

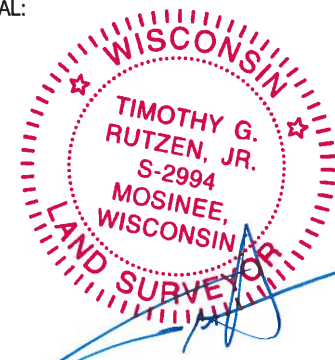
2008 - PLS 2443 COULD NOT FIND ZIETLOW'S TIES, BUT THE CORNER MONUMENT WAS STILL IN PLACE. SET NEW REFERENCE TIES TO PERPETUATE THE CORNER LOCATION.

2017 - PLS 2994 FOUND A HARRISON MONUMENT 4" BELOW THE ROAD SURFACE, 2 TIES AND 1 WITNESS. THE MONUMENT AGREES WITH THE EXISTING TIES AND WITNESS. ACCEPTED THE HARRISON MONUMENT AS THE CORNER LOCATION. SET 2 NEW TIES AND MEASURED TO THE TIES AND WITNESS.



LOCATION
 (INDICATE CORNER BY "X")

SEAL:



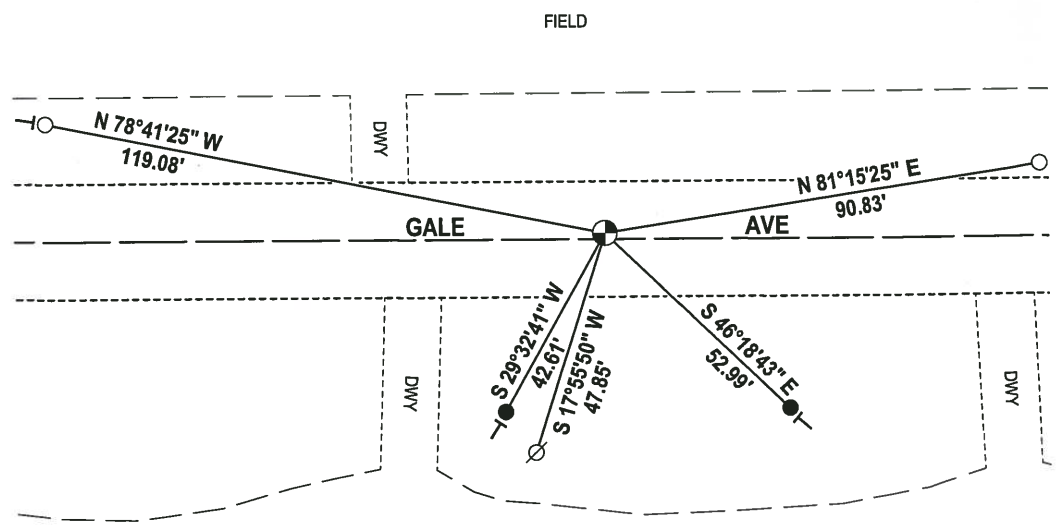
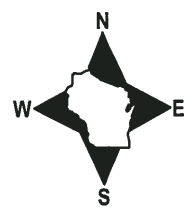
DATA SHOWN HERE ON THIS TIE SHEET IS CORRECT AND COMPLETE TO THE BEST OF MY KNOWLEDGE AND BELIEF.

PROFESSIONAL LAND SURVEYOR

DATE 12-21-17

TIE SKETCH

NOTE: THE CORNER FALLS 1 1/2' NORTH OF THE CENTERLINE OF GALE AVE.



- 3/4" x 18" IRON REBAR SET, 1.50#/FT
- 3/4" IRON ROD FOUND
- ⊙ HARRISON FOUND
- ∅ WITNESS POWER POLE FOUND
- VINYL "T" POST

ADAMS COUNTY

Survey Monument Record

TYPE OF MONUMENT: 30" STANDARD HARRISON

STATE PLANE COORDINATES: N _____

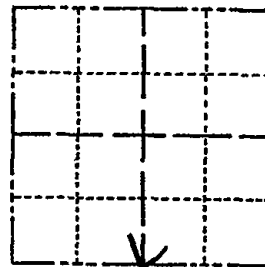
E _____

ELEVATION -- M.S.L. DATUM: _____

THETA ANGLE: _____

FIELD BOOK: 486 PAGE 55

CORNER NO. 122
 SECTION 31
 TOWN 15N
 RANGE 7E



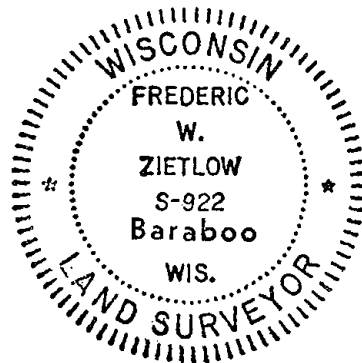
LOCATION
(Indicated by 'X')

SEAL:

BASIS FOR MONUMENT LOCATION

(Use reverse side if necessary)

Show info such as: History of corner, with reference to Vol. and pg, dates, surveyor; exact description of monument replaced; if location computed, by taped or EDM traverse; landowner remarks, etc.



RESEARCHED ADAMS Co. SURVEY RECORDS & FOUND THAT THERE WERE NO RESURVEYS ON FILE. ALL EVIDENCE OF ORIGINAL CORNER IS GONE, SET THIS CORNER BY THE SINGLE PROPORTIONATE METHOD

EDM TRAVERSE MAINTENANCE RECORD

Date	Init.	Remarks
12-28-81	TH+NT	Ties o.k
2-3-86	GR-SS	OK
11-20-91	KE-JG	RE-TIED
2-26-01	JG	OK
1-31-06	JG	OK
12-21-11	MS	OK

CERTIFIED CORRECT:

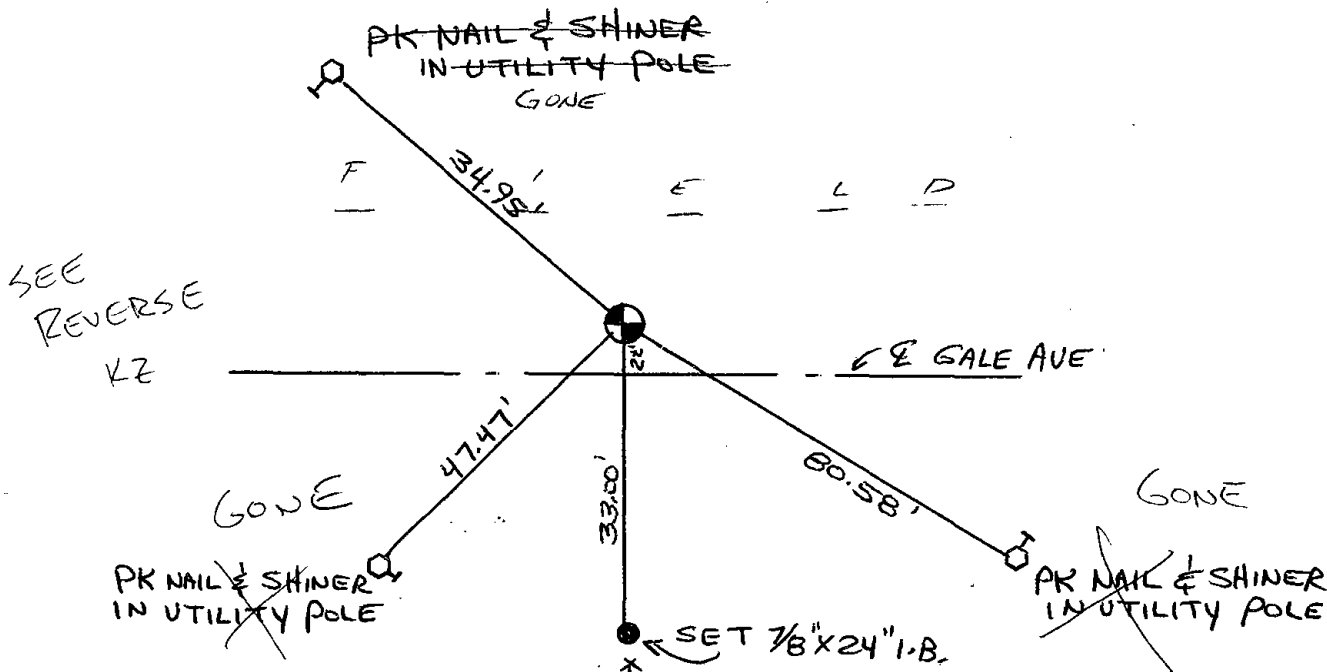
Frederick W. Zietlow

Registered Land Surveyor

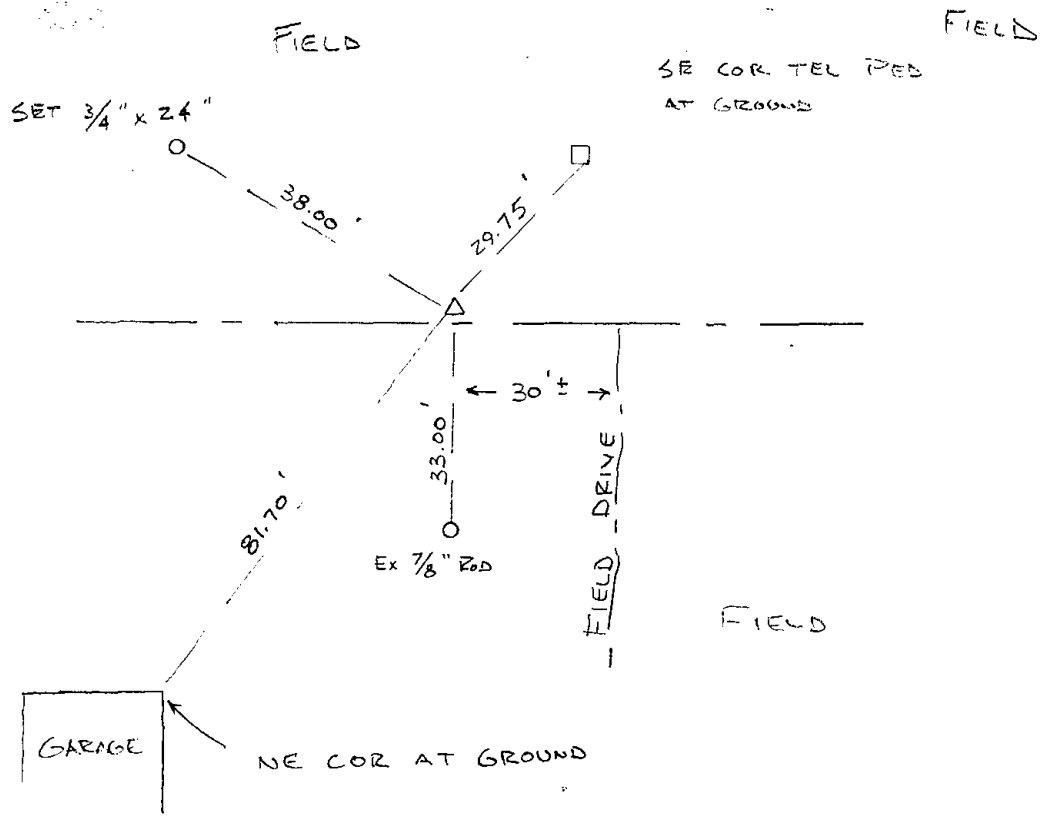
DATE: AUGUST 24, 1977

TIE SKETCH

(Show at least four ties)



MONUMENT IS PK & SHINER. NO HARRISON
11-20-91 KE-J6



ADAMS COUNTY CERTIFIED U.S. PUBLIC LAND SURVEY MONUMENT RECORD

DATUM: NAD 83 (1991)	ADAMS COUNTY COORDINATES	
CONTROL: COMBINATION OF GPS AND CONVENTIONAL FIELD CONTROL	NORTH	132,909.47'
	EAST	559,995.22'

*THE SOUTH QUARTER CORNER OF SECTION 31,
TOWN 15 NORTH, RANGE 7 EAST, TOWN OF
JACKSON, ADAMS COUNTY, WISCONSIN.*

(A) IDENTIFY THE CORNER BY REFERENCE
TO THE U.S. PUBLIC LAND SURVEY SYSTEM

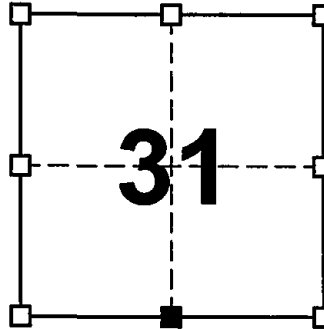
■ = CORNER MONUMENT RESTORED

WITNESS TO CORNER LOCATION:

TODD T. RUMMLER

TERRY M. PREM

JASON A. PELOCK



SECTION 31
TOWN 15 NORTH
RANGE 7 EAST

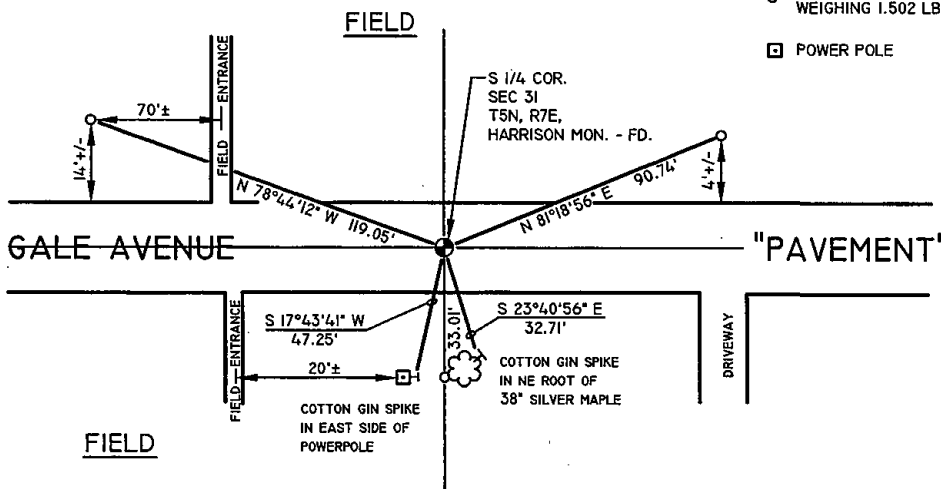
(B) DESCRIBE ANY RECORD EVIDENCE, MONUMENT EVIDENCE, OCCUPATIONAL EVIDENCE,
TESTIMONIAL EVIDENCE OR ANY OTHER MATERIAL EVIDENCE YOU CONSIDERED, AND
WHETHER THE MONUMENT WAS FOUND OR PLACED.

*FRED ZIETLOW SET THIS CORNER IN 1977. I COULD NOT FIND ZIETLOW'S TIES,
BUT THE CORNER MONUMENT WAS STILL IN PLACE. I SET NEW REFERENCE
TIES AS SHOWN BELOW TO PERPETUATE THE CORNER LOCATION.*

(C) IN THE PLAN VIEW DRAWING BELOW, PROVIDE REFERENCE TIES TO AT LEAST 4 WITNESS
MONUMENTS OR, IF THE LOCATION IS WITHIN A MUNICIPALITY, TO AT LEAST 2 WITNESS
MONUMENTS. (WITNESS MONUMENTS SHALL BE MADE ON CONCRETE, NATURAL STONE, IRON,
OR OTHER EQUALLY DURABLE MATERIAL.) DESCRIBE WITNESS MONUMENTS.

LEGEND

- QUARTER SECTION CORNER MONUMENT
- SET 3/4" X 24" LONG REBAR
WEIGHING 1.502 LB./FT.
- POWER POLE



NOT TO SCALE

- (D) DESCRIBE ANY MATERIAL DISCREPANCY BETWEEN THE LOCATION OF THE CORNER AS RESTORED OR REESTABLISHED AND THE LOCATION OF THAT CORNER AS PREVIOUSLY RESTORED OR REESTABLISHED BY DISTANCE AND DIRECTION. SHOW THE DISCREPANCY ON THE PLAN VIEW DRAWING UNDER (C), ABOVE. SHOW THE DISTANCES BETWEEN THE CORNER AS PREVIOUSLY RESTORED OR REESTABLISHED AND (1) THE CORNER AS RESTORED OR REESTABLISHED, AND (2) TO AT LEAST 2 OF THE WITNESS MONUMENTS AS SHOWN ON THE DRAWING IN (C), ABOVE.

NONE

- (E) WAS THE CORNER RESTORED THROUGH ACCEPTANCE OF (1) AN OBLITERATED EVIDENCE LOCATION, OR (2) A FOUND PERPETUATED LOCATION?

2.) A FOUND PERPETUATED LOCATION


- (F & G) WAS THE CORNER REESTABLISHED THROUGH LOST CORNER PROPORTIONATE METHODS? IF SO SHOW THE METHOD, INCLUDING THE DIRECTION AND DISTANCE TO OTHER PUBLIC LAND SURVEY CORNERS USED AS EVIDENCE OR USED FOR PROPORTIONING IN DETERMINING THE CORNER LOCATION.

NO.

AFFIX LAND SURVEYOR SEAL

- (H) I, TODD T. RUMMLER, RLS-2443 CERTIFY THAT THE CORNER LOCATION SHOWN ON THIS RECORD WAS DETERMINED BY ME OR UNDER MY DIRECTION AND CONTROL AND THAT THIS U.S. PUBLIC LAND SURVEY MONUMENT RECORD IS CORRECT AND COMPLETE TO THE BEST OF MY KNOWLEDGE AND BELIEF.




SIGNATURE

1-23-08
DATE