

32 SECTION 15 TOWN 07 RANGE

# ADAMS COUNTY

COUNTY CORNER NO: 125  
 ROMPORTOL ID: 41507320000

## PUBLIC LAND SURVEY MONUMENT RECORD

TYPE OF MONUMENT: HARRISON  
 ADAMS COUNTY COORDINATES, NAD 83 (2007)

N. 132916.775

E. 567866.468

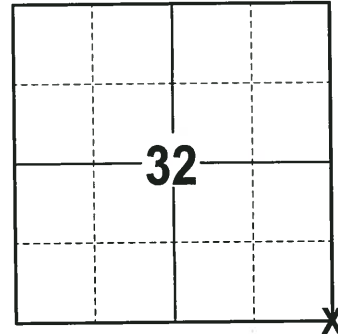
ELEVATION- \_\_\_\_\_ DATUM \_\_\_\_\_

FIELD WORK DATE: 10/31/2017

### BASIS FOR MONUMENT LOCATION

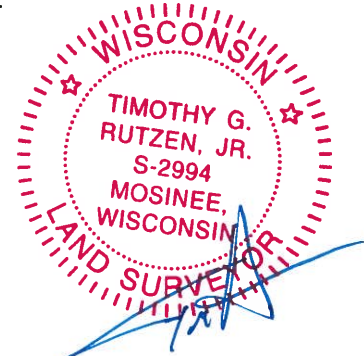
1973 - PLS 878 FOUND FIVE CORNER POSTS WHERE FOUR FENCE LINES CAME TOGETHER. ONE POST HAD BROKEN CROCKERY PILED AROUND IT. THERE WAS MORE BROKEN CROCKERY AT THE BOTTOM OF THE POST HOLE. ACCEPTED THIS POST AS THE CORNER LOCATION AND REPLACED IT WITH A 30" HARRISON MONUMENT. PILED CROCKERY AROUND THE HARRISON AND TIED OUT.

2017 - PLS 2994 FOUND A HARRISON MONUMENT 3" ABOVE THE GROUND SURFACE AND 4 WITNESS TREES. THE MONUMENT AGREES WITH THE EXISTING WITNESS TREES. ACCEPTED THE HARRISON MONUMENT AS THE CORNER LOCATION. SET 4 NEW TIES AND MEASURED TO THE TIES AND WITNESS TREES.



**LOCATION**  
 (INDICATE CORNER BY "X")

SEAL:

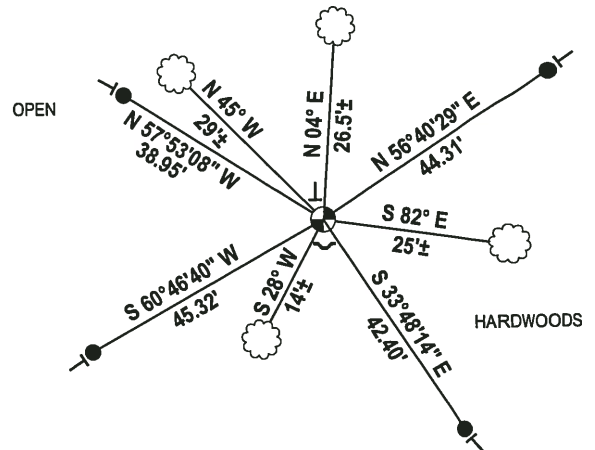
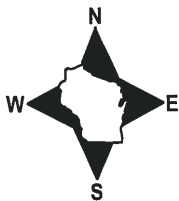


DATA SHOWN HERE ON THIS TIE SHEET IS CORRECT AND COMPLETE TO THE BEST OF MY KNOWLEDGE AND BELIEF.

PROFESSIONAL LAND SURVEYOR

DATE 12-21-17

### - TIE SKETCH -



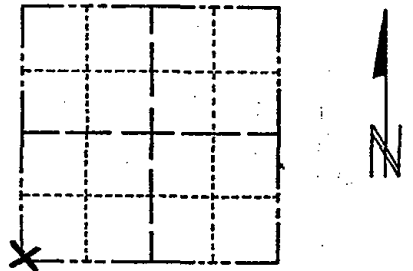
- 3/4" x 18" IRON REBAR SET, 1.50#/FT
- ⊕ HARRISON FOUND
- ↙ STEEL FENCE POST
- └ VINYL "T" POST
- ☁ WITNESS TREE FOUND

ADAMS COUNTY

Survey Monument Record

TYPE OF MONUMENT: 20" HARRISON
STATE PLANE COORDINATES: N
E
ELEVATION -- M.S.L. DATUM:
THETA ANGLE:
FIELD BOOK: 109 PAGE 57

CORNER NO. 612
SECTION 33
TOWN 15
RANGE 7



LOCATION (Indicated by 'X')

SEAL:



BASIS FOR MONUMENT LOCATION

(Use reverse side if necessary)

Show info such as: History of corner, with reference to Vol. and pg, dates, surveyor; exact description of monument replaced; if location computed, by taped or EDM traverse; landowner remarks, etc.

Found five corner posts where four fence lines came together. One post had broken crockery piled around it. There was more broken crockery at the bottom of the post hole. Accepted this post as correct and replaced it with a Harrison. Crockery piled around the Harrison. An EDM traverse to the east verified this corner.

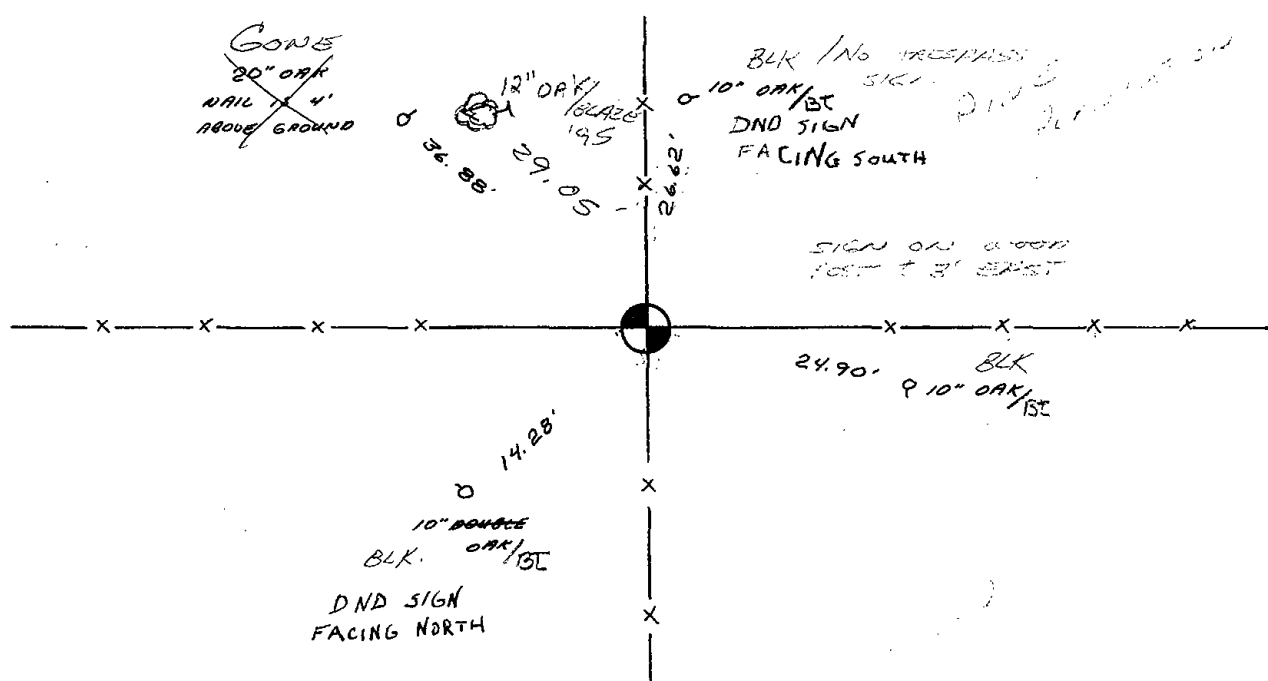
SEE CARLEND SHEET
DATED AUG 16 1983
FOR NEW DISTANCES
OK 1-31-06 - JB

CERTIFIED CORRECT:
Anthony B. Kiedrowski
Registered Land Surveyor
DATE: 11/30/73

TIE SKETCH

(Show at least four ties)

OK 12-21-11 MS
Ties to nail and disc in blazed tree.



MAINTENANCE RECORD

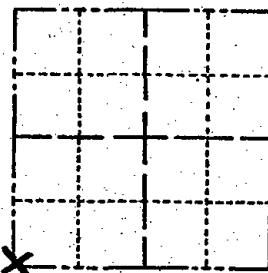
Date	Init.	Remarks
12-28-81	JHNS	MON + TIES O.K.
3-2-86	GR	" " "
2-3-91	SS-SG	ALL OK
11-29-95	SS	1 NEW TIE
2-27-01	JG-MH	OK

ADAMS COUNTY

Survey Monument Record

TYPE OF MONUMENT: 20" HARRISON  
STATE PLANE COORDINATES: N \_\_\_\_\_  
E \_\_\_\_\_  
ELEVATION — M.S.L. DATUM: \_\_\_\_\_  
THETA ANGLE: \_\_\_\_\_  
FIELD BOOK: 109 PAGE 57

CORNER NO. 612  
SECTION 33  
TOWN 15  
RANGE 7



LOCATION  
(Indicated by 'X')

SEAL:



BASIS FOR MONUMENT LOCATION

(Use reverse side if necessary)

Show info such as: History of corner, with reference to Vol. and pg, dates, surveyor; exact description of monument replaced; if location computed, by taped or EDM traverse; landowner remarks, etc.

Found five corner posts where four fence lines came together. One post piled around it. crockery at hole. Accepted and replaced it with piled around the corner to the corner.

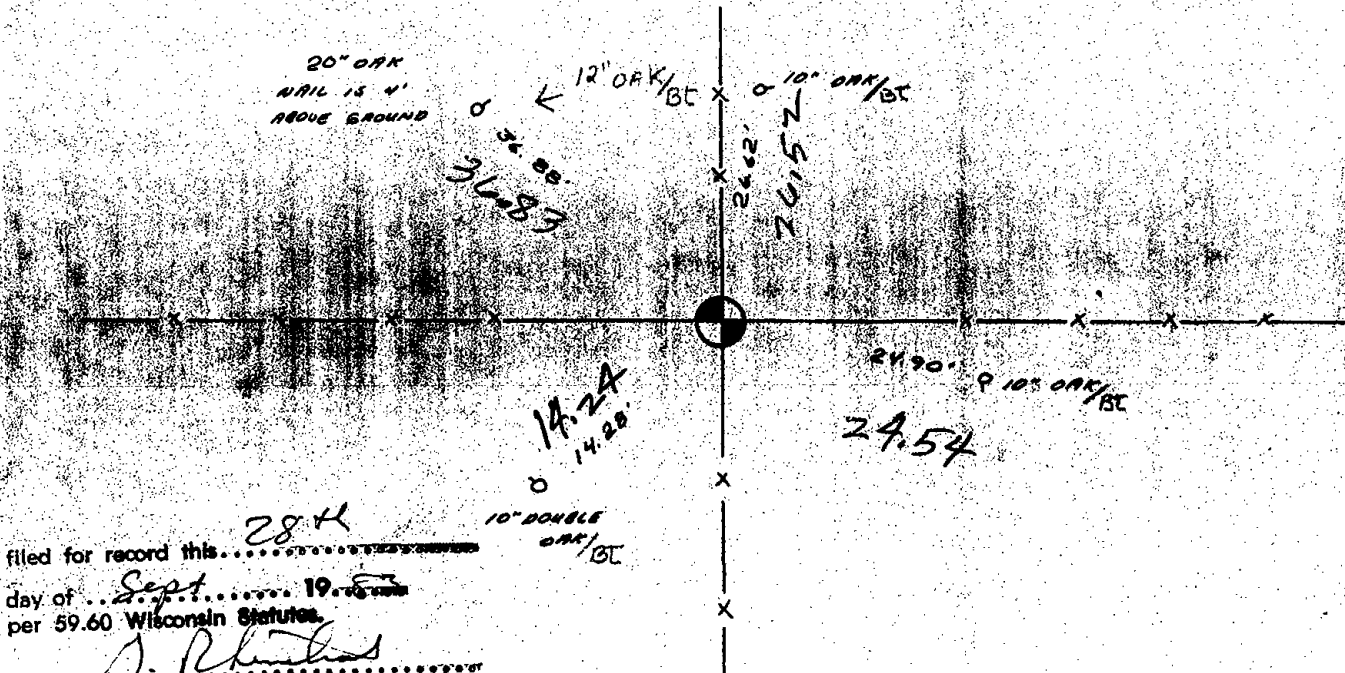
Ties ckd Aug 6 '83  
Ken Carlson

CERTIFIED CORRECT:  
*Anthony J. Kechavel*  
Registered Land Surveyor  
DATE: 11/30/73

TIE SKETCH

(Ties to nail and disc in blazed tree.)

(Show at least four ties)



filed for record this 28th  
day of Sept 1973  
per 59.60 Wisconsin Statutes.

*Anthony J. Kechavel*