

PUBLIC LAND SURVEY MONUMENT RECORD

TYPE OF MONUMENT: HARRISON (BROKEN-TOP)
 ADAMS COUNTY COORDINATES, NAD 83 (2007)

N. 192012.755

E. 499397.744

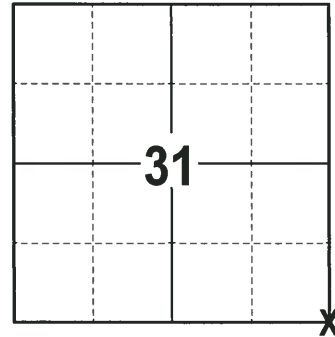
ELEVATION- _____ DATUM _____

FIELD WORK DATE: 01/03/2018

BASIS FOR MONUMENT LOCATION

1981 - PLS 1444 THIS CORNER WAS SET BY EXTENDING THE LINE AND DOUBLING THE DISTANCE SOUTHWARD FROM THE NW CORNER OF SECTION 32-17-5 THOUGH THE W1/4 CORNER OF SECTION 32-17-5. FOUND NO EVIDENCE OF THE ORIGINAL CORNER OR ANY RESURVEYS. SET A HARRISON MONUMENT AT THE CALCULATED LOCATION AND TIED OUT.

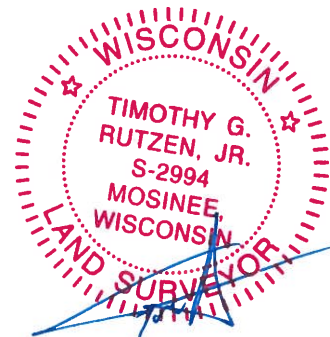
2017 - PLS 2994 FOUND A HARRISON MONUMENT WITH A BROKEN-TOP 16" BELOW THE GROUND SURFACE AND 1 WITNESS. THE MONUMENT AGREES WITH THE EXISTING WITNESS. ACCEPTED THE HARRISON MONUMENT WITH A BROKEN-TOP AS THE CORNER LOCATION. SET 4 NEW TIES AND MEASURED TO THE TIES AND WITNESS.



LOCATION

(INDICATE CORNER BY "X")

SEAL:



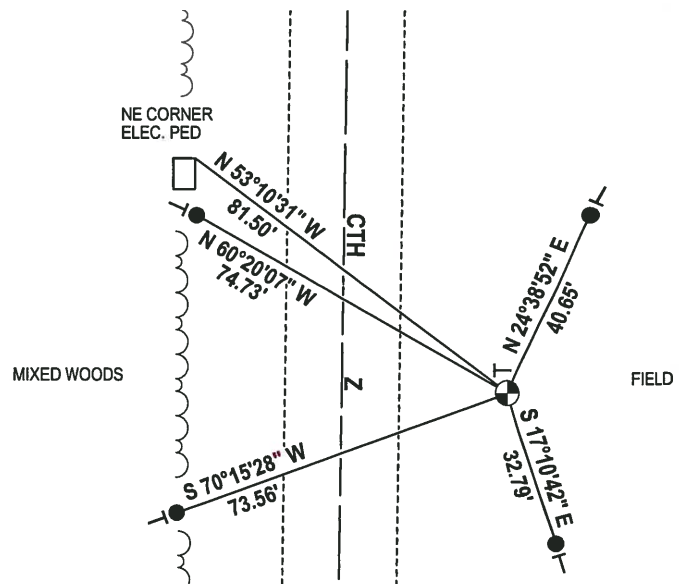
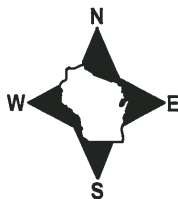
DATA SHOWN HERE ON THIS TIE SHEET IS CORRECT AND COMPLETE TO THE BEST OF MY KNOWLEDGE AND BELIEF.

PROFESSIONAL LAND SURVEYOR

DATE 2-2-18

- TIE SKETCH

NOTE: THE CORNER FALLS 35'± EAST OF THE CENTERLINE OF CTH Z.



- 3/4" x 18" IRON REBAR SET, 1.50#/FT
- ⊕ HARRISON (BROKEN-TOP) FOUND
- VINYL "T" POST

Government Land Corner Certificate

ADAMS County

TYPE OF MONUMENT: HARRISON

STATE PLANE COORDINATES: N _____
E _____

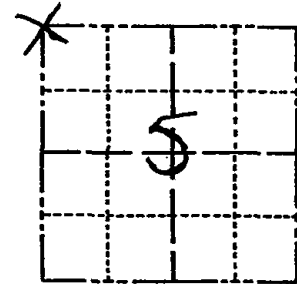
ELEVATION — M.S.L. DATUM: _____

THETA ANGLE: _____

FIELD BOOK: 86 PAGE 121

DRAWN BY: WT

CORNER NO. 3
SECTION 5
TOWN 16
RANGE 5



LOCATION
(Indicated by 'X')

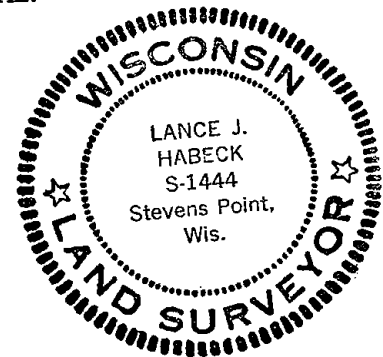
BASIS FOR MONUMENT LOCATION

Show info such as: History of corner, with reference to Vol. and pg., dates, surveyor; exact description of monument replaced; if location computed, by taped or EDM traverse; landowner remarks, etc. (Use reverse side if necessary)

This corner was set by extending the line and doubling the distance southward from the NW corner of Section 32-17-5 through the W $\frac{1}{4}$ corner of Section 32-17-5. No evidence of the original corner or any resurvey corner was found.

2-GONE, 1-NEW 7-10-90 SS-JG
ALL OK' 2-10-00 T.W. SS.
OK- 3-4-05 JS-SS
" 11-9-10 SS

SEAL:



DATA SHOWN HERE ON
CERTIFIED CORRECT:

Lance J. Habek
Registered Land Surveyor

DATE: 1/6/81

TIE SKETCH

Show at least four ties, also fence lines, roads, topo, size and type of witness trees and if off road - best way to arrive at corner.

