

PUBLIC LAND SURVEY MONUMENT RECORD

TYPE OF MONUMENT: HARRISON
 ADAMS COUNTY COORDINATES, NAD 83 (2007)

N. 192245.957

E. 515235.146

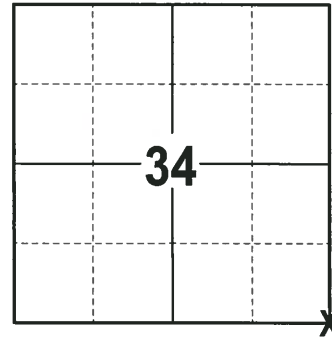
ELEVATION- --- DATUM ---

FIELD WORK DATE: 01/03/2018

BASIS FOR MONUMENT LOCATION

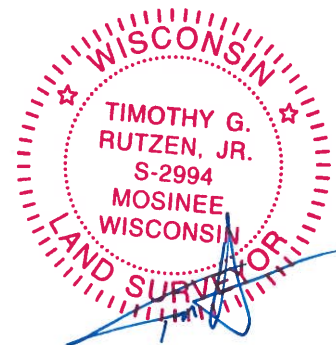
1974 - PLS 728 REPLACED EXISTING WOOD POST WITH A SQUARED TOP WITH A HARRISON AND TIED OUT. THIS WAS THE SAME TYPE OF POST ACCEPTED AT THE SW CORNER OF SECTION 12, T16N, R5E. NO RECORDS AVAILABLE ON WHO SET THE CORNER AND NO INSCRIBED BEARING TREES FOUND.

2017 - PLS 2994 FOUND A HARRISON MONUMENT FLUSH WITH THE GROUND SURFACE. FOUND NO EVIDENCE OF ANY TIES OR WITNESSES. ACCEPTED THE HARRISON MONUMENT AS THE BEST EVIDENCE OF THE CORNER LOCATION. SET 4 NEW TIES AND MEASURED TO THE TIES.



LOCATION
 (INDICATE CORNER BY "X")

SEAL:

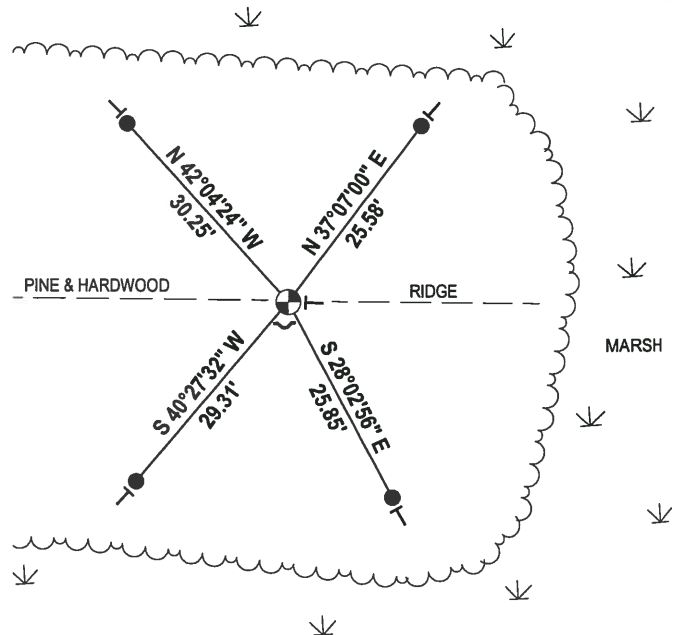
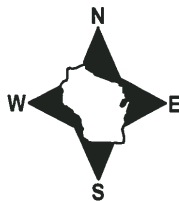


DATA SHOWN HERE ON THIS TIE SHEET IS CORRECT AND COMPLETE TO THE BEST OF MY KNOWLEDGE AND BELIEF.

PROFESSIONAL LAND SURVEYOR

DATE 2-2-18

- TIE SKETCH



- 3/4" x 18" IRON REBAR SET, 1.50#/FT
- ⊕ HARRISON FOUND
- ↘ STEEL FENCE POST
- └ VINYL "T" POST

ADAMS COUNTY

Survey Monument Record

TYPE OF MONUMENT: ADAMS COUNTY

STATE PLANE COORDINATES: N _____ E _____

ELEVATION — M.S.L. DATUM: _____

THETA ANGLE: _____

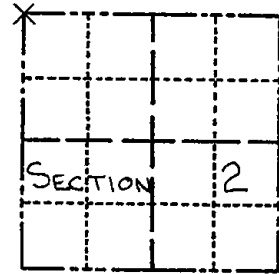
FIELD BOOK: _____ PAGE _____

CORNER NO. 472 ⁹

SECTION 2

TOWN 16 N

RANGE SE



LOCATION (Indicated by 'X')

SEAL:



BASIS FOR MONUMENT LOCATION

(Use reverse side if necessary)

Show info such as: History of corner, with reference to Vol. and pg, dates, surveyor; exact description of monument replaced; if location computed, by taped or EDM traverse; landowner remarks, etc.

THIS MONUMENT REPLACED EXISTING WOOD POST WITH SQUARED TOP. THIS WAS THE SAME TYPE OF POST ACCEPTED AT S.W. CORNER OF SECTION 12, T16N, R5E. NO RECORDS AVAILABLE ON WHO SET CORNER AND NO INSCRIBED BEARING TREES FOUND.

- MON. OK - RETIED 1/13/81 RN-SK
- OK 11-8-85 S.S.
- ALL OK 9-5-90 JG-SS
- ALL OK 1-11-95 JG-SS
- 1-NEW 1-3-06 - JG
- 1 NEW 12-08-10 SS

CERTIFIED CORRECT:

Donald L. Paulson
Registered Land Surveyor

DATE: JULY 26, 1974

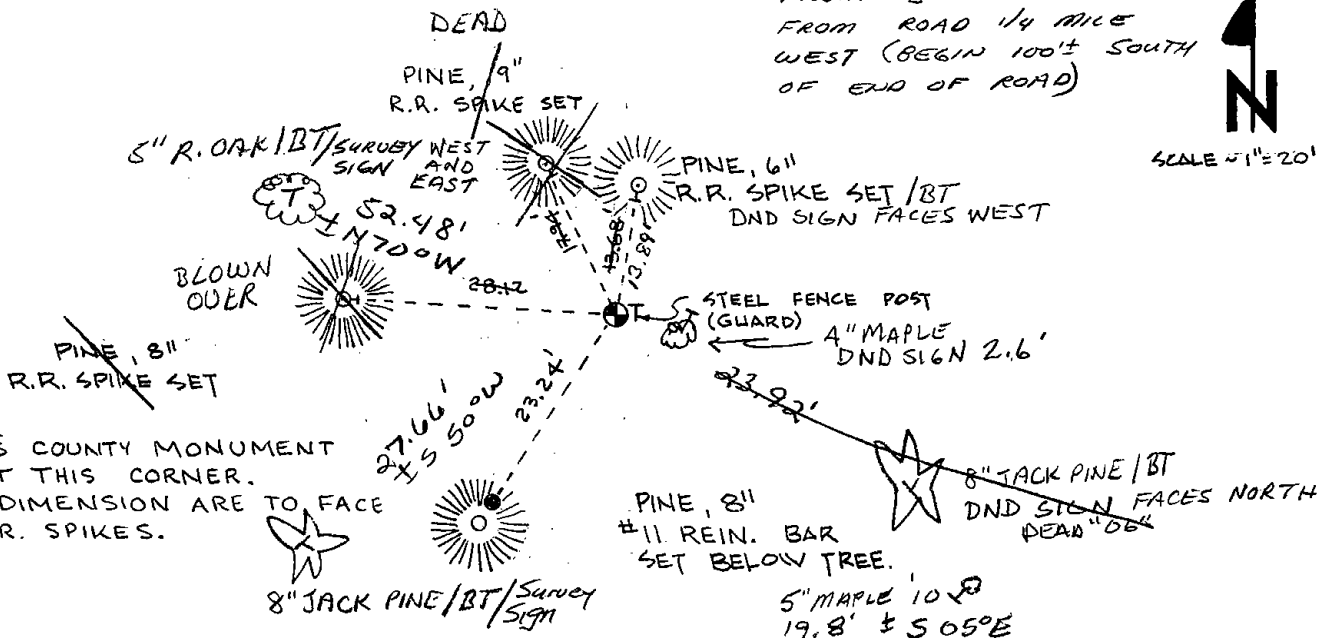
TIE SKETCH

(Show at least four ties)

FOLLOW PENINSULA EAST
BEST WAY TO ARRIVE AT
CORNER - COMPASS & CHAIN
FROM SW CORNER OR
FROM ROAD 1/4 MILE
WEST (BEGIN 100'± SOUTH
OF END OF ROAD)



SCALE 1" = 20'



NOTES:

- ADAMS COUNTY MONUMENT SET AT THIS CORNER.
- ALL DIMENSION ARE TO FACE OF R.R. SPIKES.