

## PUBLIC LAND SURVEY MONUMENT RECORD

TYPE OF MONUMENT: 3/4" IRON ROD  
 ADAMS COUNTY COORDINATES, NAD 83 (2007)

N. 192344.839

E. 523183.668

ELEVATION-      DATUM     

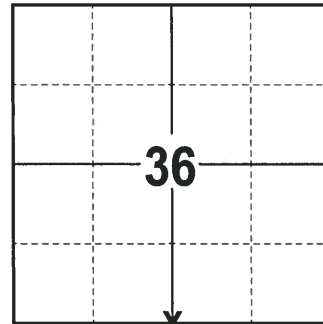
FIELD WORK DATE: 01/04/2018

### BASIS FOR MONUMENT LOCATION

1974 - PLS 728 THIS CORNER WAS SET BY USING E.D.M. FOR SINGLE PROPORTIONING BETWEEN THE RE-ESTABLISHED NW CORNER OF SECTION 2, T16N, R5E AND EXISTING COUNTY MONUMENT AT THE NE CORNER OF SECTION 1, T16N, R5E.

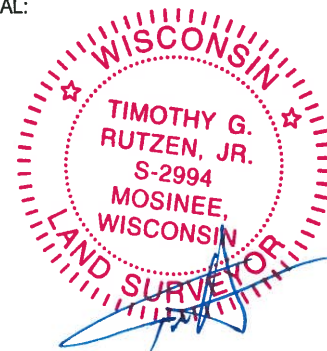
1985 - PLS 1478 CORNER RE-SET USING RECORDED DATA AND TIE SHEETS FROM THE COUNTY SURVEYOR'S OFFICE. LOCATION MATCHES PAULSON'S TIE SHEET DISTANCE TO 1" IRON PIPE, BUT DOES NOT MATCH DISTANCE TO THE EXISTING R.R. SPIKE TIE IN AN OAK TREE. SET A 3/4"X24" IRON ROD AT THE CORNER LOCATION AND RE-TIED

2017 - PLS 2994 FOUND A 3/4" IRON ROD UNDER 12" OF ICE AND 2 TIES. THE MONUMENT AGREES WITH THE EXISTING TIES. ACCEPTED THE 3/4" IRON ROD AS THE CORNER LOCATION. SET 2 NEW TIES AND MEASURED TO THE TIES.



**LOCATION**  
 (INDICATE CORNER BY "X")

SEAL:



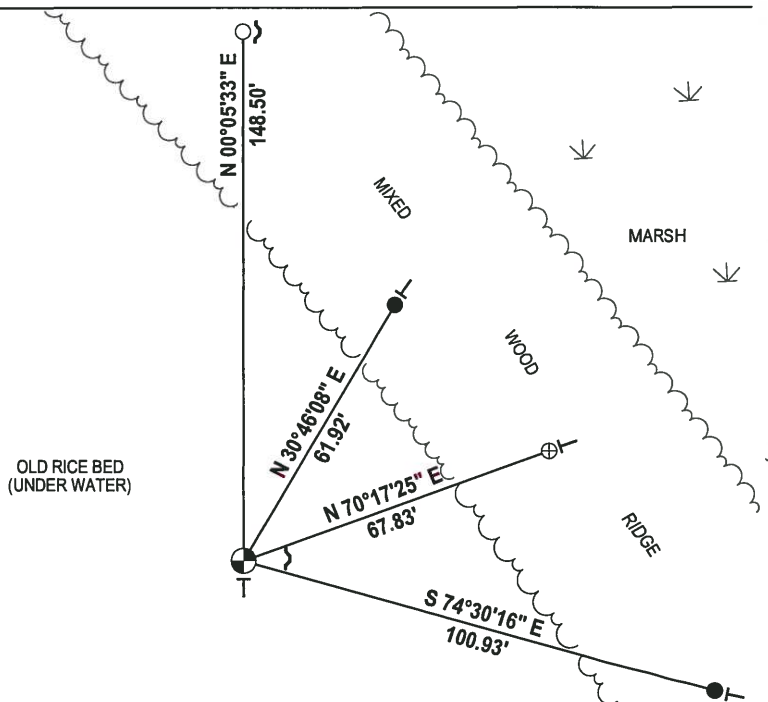
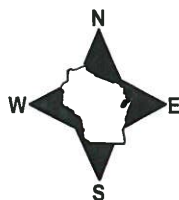
DATA SHOWN HERE ON THIS TIE SHEET IS CORRECT AND COMPLETE TO THE BEST OF MY KNOWLEDGE AND BELIEF.

PROFESSIONAL LAND SURVEYOR

DATE 2-2-18

### - TIE SKETCH -

NOTE: THE CORNER FALLS 47± WEST OF THE EDGE OF THE RICE BED.



- 3/4" x 18" IRON REBAR SET, 1.50#/FT
- 3/4" IRON ROD FOUND
- ⊕ 1" O.D. IRON PIPE FOUND
- ⊗ 3/4" IRON ROD FOUND
- ↘ STEEL FENCE POST
- └ VINYL "T" POST

# ADAMS COUNTY

## Survey Monument Record

TYPE OF MONUMENT: 3/4" x 24" Iron Rod

STATE PLANE COORDINATES: N \_\_\_\_\_

E \_\_\_\_\_

ELEVATION — M.S.L. DATUM: \_\_\_\_\_

THETA ANGLE: \_\_\_\_\_

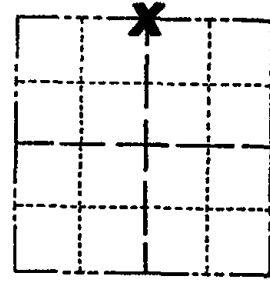
FIELD BOOK: \_\_\_\_\_ PAGE \_\_\_\_\_

CORNER NO. 12

SECTION 1

TOWN 16

RANGE 5



LOCATION  
(Indicated by 'X')

### BASIS FOR MONUMENT LOCATION

(Use reverse side if necessary)

Show info such as: History of corner, with reference to Vol. and pg, dates, surveyor; exact description of monument replaced; if location computed, by taped or EDM traverse; landowner remarks, etc.

SEAL:

This corner was previously set by Donald Paulson on July 26, 1974. Area is now under cultivation and corner was destroyed.

Corner reset using recorded data and tie sheet from County Surveyor's office. Location matches Paulson's tie sheet distance to 1" iron pipe, but does not match distance to existing R.R. spike tie in oak tree.

ALL OK 10-4-90 JG-SS  
 ALL OK 3/10/95 JG-CR  
 ALL OK 9-20-07 JG-SS

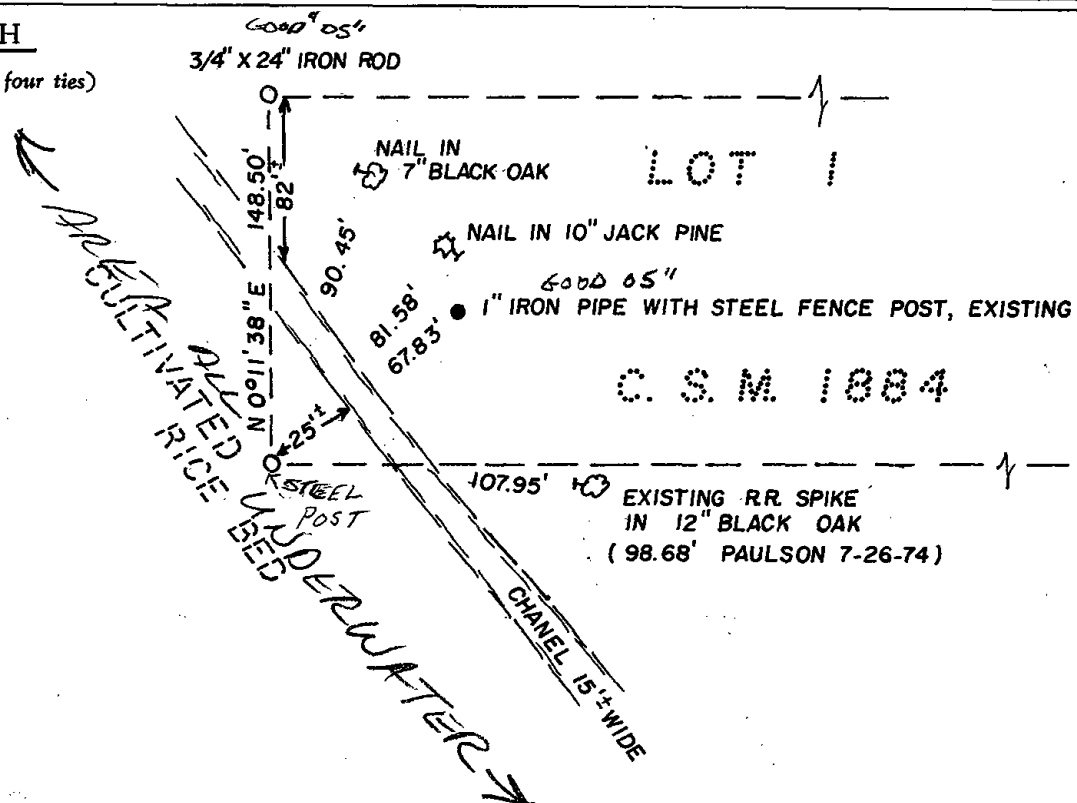
CERTIFIED CORRECT:

*D. Rhinck*  
 Registered Land Surveyor

DATE: Sept. 23, 1985

### TIE SKETCH

(Show at least four ties)



**ADAMS COUNTY**

**Survey Monument Record**

TYPE OF MONUMENT: ADAMS COUNTY

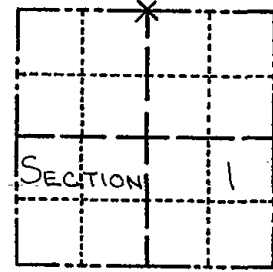
STATE PLANE COORDINATES: N \_\_\_\_\_  
E \_\_\_\_\_

ELEVATION — M.S.L. DATUM: \_\_\_\_\_

THETA ANGLE: \_\_\_\_\_

FIELD BOOK: \_\_\_\_\_ PAGE \_\_\_\_\_

CORNER NO. 471 12  
SECTION 1  
TOWN 16 N  
RANGE 5 E



LOCATION  
(Indicated by 'X')

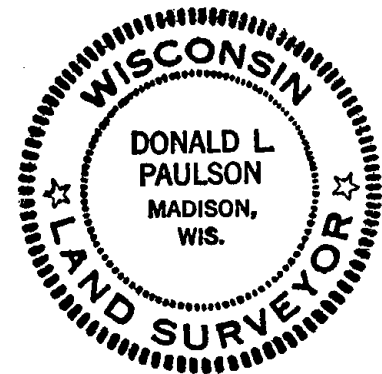
**BASIS FOR MONUMENT LOCATION**

(Use reverse side if necessary)

Show info such as: History of corner, with reference to Vol. and pg. dates, surveyor; exact description of monument replaced; if location computed, by taped or EDM traverse; landowner remarks, etc.

THIS CORNER WAS SET BY USING EDM FOR SINGLE PROPORTIONING BETWEEN RE-ESTABLISH N.W. CORNER, SEC. 2, T16N, R5E AND EXISTING COUNTY MONUMENT AT N.E. CORNER OF SEC 1, T16N, R5E.

SEAL:

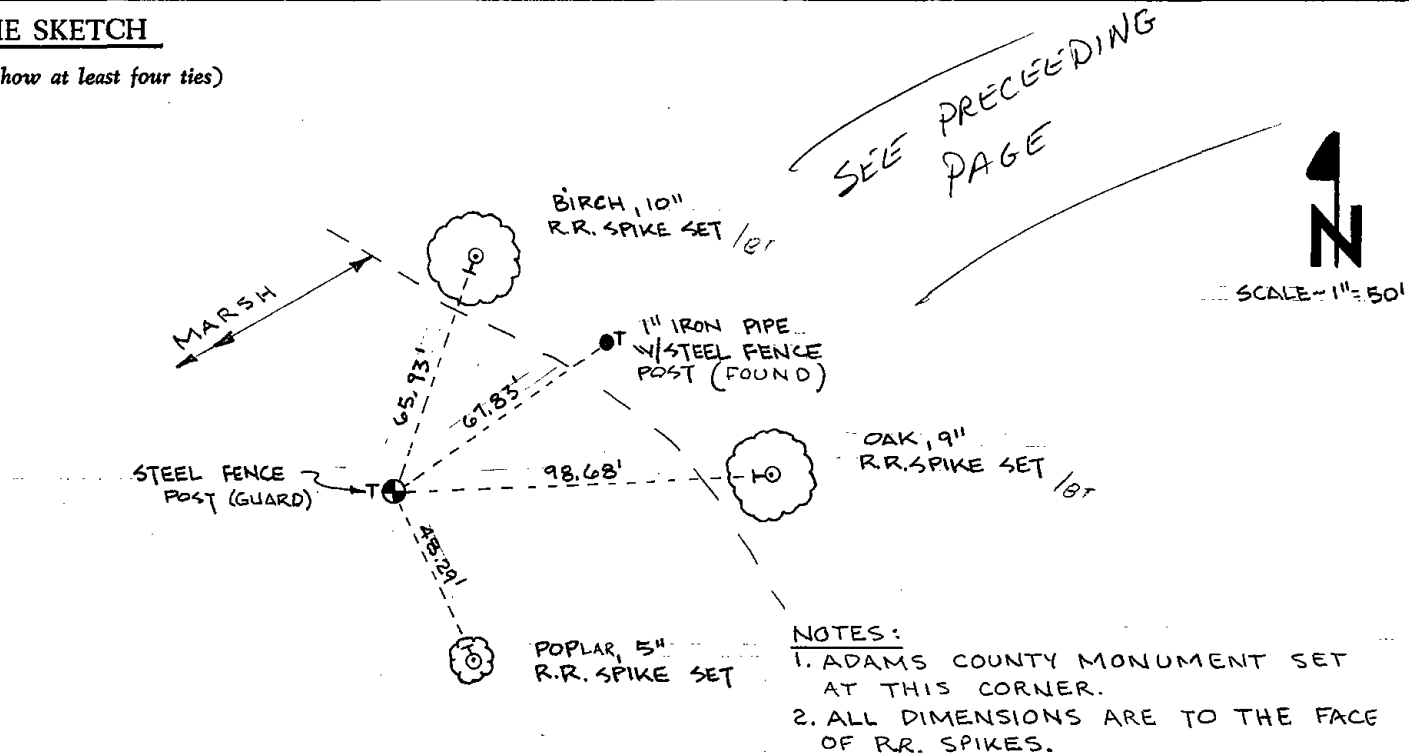


CORNER O.K. 11-6-15 D.M.-S.S.  
" " 1-15-81 RN-SK

CERTIFIED CORRECT:  
Donald L. Paulson  
Registered Land Surveyor  
DATE: JULY 26, 1974

**TIE SKETCH**

(Show at least four ties)



NOTES:  
1. ADAMS COUNTY MONUMENT SET AT THIS CORNER.  
2. ALL DIMENSIONS ARE TO THE FACE OF RR. SPIKES.