

ADAMS COUNTY

Survey Monument Record

TYPE OF MONUMENT: 30" Harrison

STATE PLANE COORDINATES: N _____

E _____

ELEVATION — M.S.L. DATUM: _____

THETA ANGLE: _____

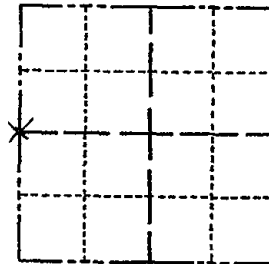
FIELD BOOK: 103 PAGE 126

CORNER NO. 126

SECTION 8

TOWN 16

RANGE 5



LOCATION
(Indicated by 'X')

SEAL:

BASIS FOR MONUMENT LOCATION

(Use reverse side if necessary)

Show info such as: History of corner, with reference to Vol. and pg, dates, surveyor; exact description of monument replaced; if location computed, by taped or EDM traverse; landowner remarks, etc.

Set monument on may 11, 1972 by Sam T. Mullen R.L.S. 981

FO MAG NAIL - TIES OK 10-26-10 SS

NO BEEPS ONLY 1 TIE KU-SK 10/1/80

TOW PRODU OFF. 10/22/85 WAD

ALL OK 4/15/85 DK

CERTIFIED CORRECT:

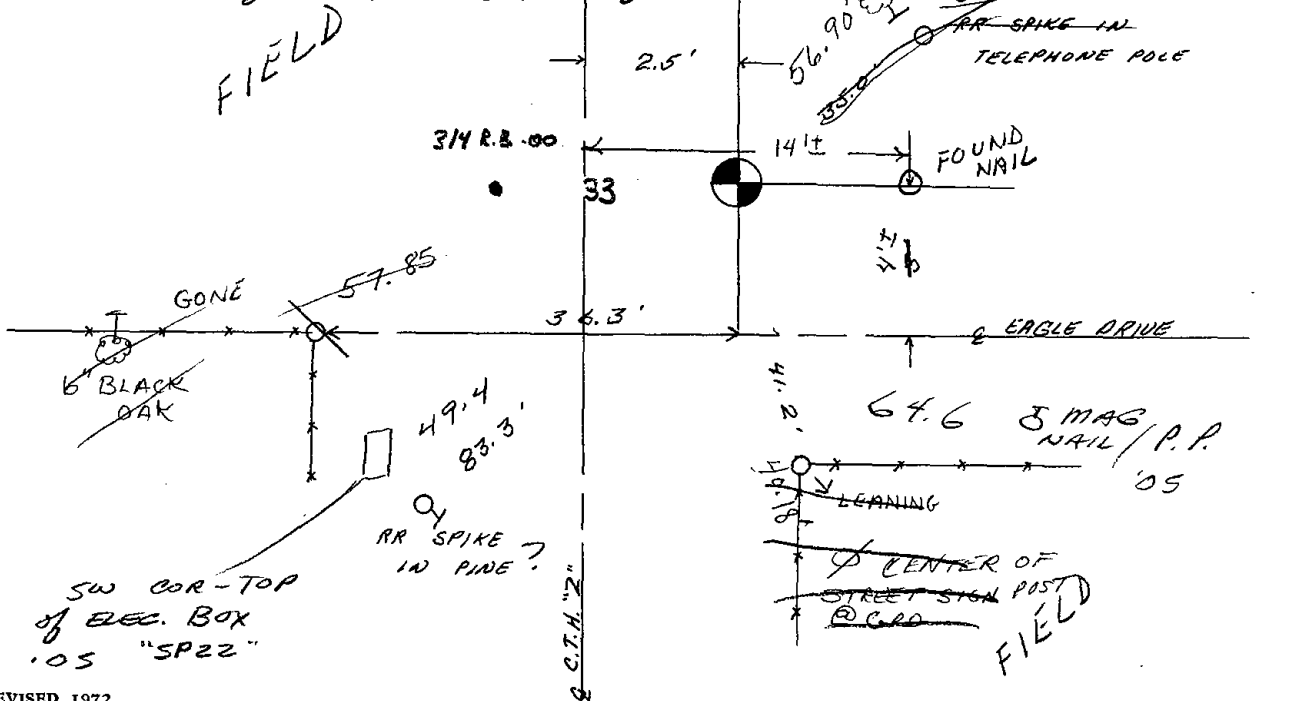
Registered Land Surveyor

DATE: _____

TIE SKETCH 3-NEW 8-29-90 56-GR

1-NEW 2-10-00 T.W.SS.

(Show at least four ties) 2-NEW TIES 3-4-05 55-JS



CENTER OF SECTION

ADAMS COUNTY

Survey Monument Record

TYPE OF MONUMENT: 1"x24" 1.68#/ft iron pipe

STATE PLANE COORDINATES: N _____

E _____

ELEVATION — M.S.L. DATUM: _____

THETA ANGLE: _____

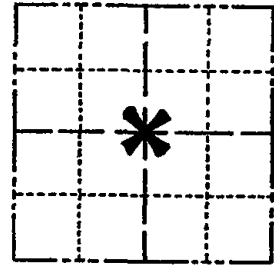
FIELD BOOK: File PAGE _____

CORNER NO. _____

SECTION 8

TOWN 16

RANGE 5



LOCATION
(Indicated by 'X')

SEAL:



BASIS FOR MONUMENT LOCATION

(Use reverse side if necessary)

Show info such as: History of corner, with reference to Vol. and pg, dates, surveyor; exact description of monument replaced; if location computed, by taped or EDM traverse; landowner remarks, etc.

Excavated with backhoe. Found 6x8" top, 8x15" bottom, 14" High sandstone. Matches distance and direction to bearing tree of record. Stone called for per County surveyor records, Vol. 1, Page 101.

Lowered stone and set pipe on top.

ALL OK 2-10-00-TW.SS.

" 3-4-05 JS-SS

CERTIFIED CORRECT:

Anthony B. Kiedrowski
Registered Land Surveyor

DATE: 8/26/76

TIE SKETCH

(Show at least four ties)

NOTE:

Ties in trees to nail in disc.

