

## PUBLIC LAND SURVEY MONUMENT RECORD

TYPE OF MONUMENT: HARRISON  
ADAMS COUNTY COORDINATES, NAD 83 (2007)

N. 188528.555

E. 520505.814

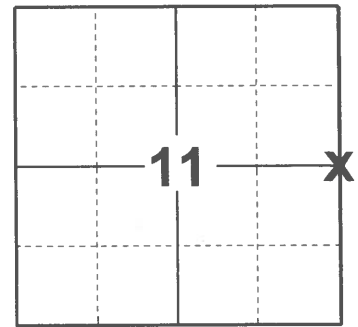
ELEVATION- \_\_\_\_\_ DATUM \_\_\_\_\_

FIELD WORK DATE: 01/19/2021

### BASIS FOR MONUMENT LOCATION

1976 - PLS 1103 RAN EDM/T2 TRAVERSE AROUND SECTIONS 8, 9, 10, 11, AND 12 TO DETERMINE SEARCH AREAS. INVESTIGATION YIELD NO EVIDENCE OF THE ORIGINAL CORNER, ANY REMONUMENTATION, OR ANY WITNESS ACCESSORIES. RELOCATED CORNER BY SINGLE PROPORTIONATE MEASURE BETWEEN THE ADJACENT SECTION CORNERS. SET 10-05-1976.

2021 - PLS 2675 FOUND A HARRISON MONUMENT 4"± ABOVE THE GROUND SURFACE AND 2 WITNESS TREES. THE MONUMENT AGREES WITH BOTH WITNESS TREES. ACCEPTED THE HARRISON AS THE CORNER LOCATION. SET 4 NEW TIES AND MEASURED TO EXISTING WITNESS TREES.



**LOCATION**  
(INDICATE CORNER BY "X")

SEAL:

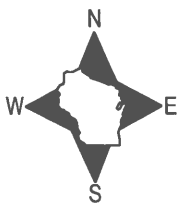
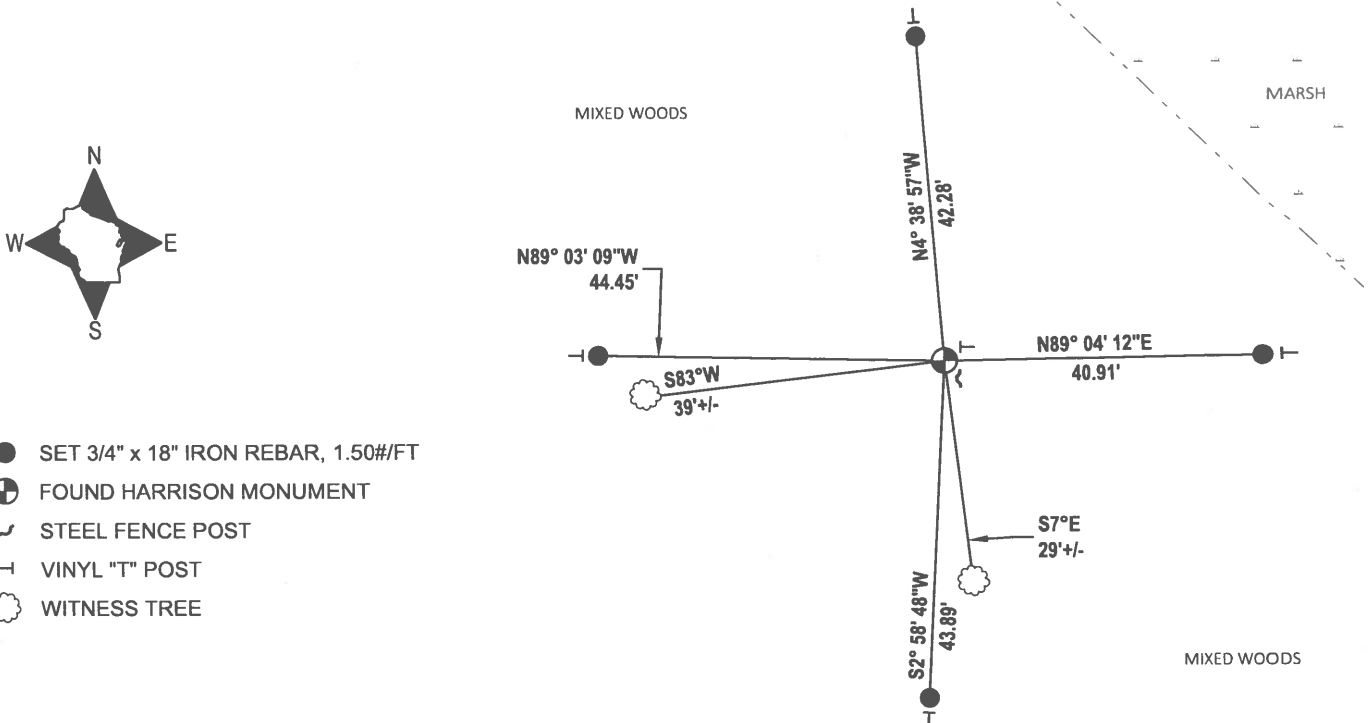


DATA SHOWN HERE ON THIS TIE SHEET IS CORRECT AND COMPLETE TO THE BEST OF MY KNOWLEDGE AND BELIEF.

PROFESSIONAL LAND SURVEYOR

DATE 2/23/2021

### TIE SKETCH



- SET 3/4" x 18" IRON REBAR, 1.50#/FT
- ⊕ FOUND HARRISON MONUMENT
- ~ STEEL FENCE POST
- VINYL "T" POST
- ☼ WITNESS TREE

# ADAMS COUNTY

## Survey Monument Record

TYPE OF MONUMENT: Standard Harrison

STATE PLANE COORDINATES: N \_\_\_\_\_

E \_\_\_\_\_

ELEVATION — M.S.L. DATUM: \_\_\_\_\_

THETA ANGLE: \_\_\_\_\_

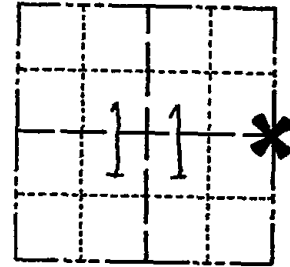
FIELD BOOK: 38 PAGE 17

CORNER NO. 39

SECTION 11

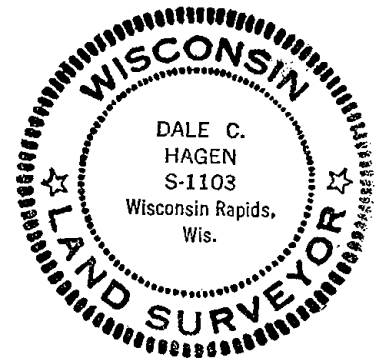
TOWN 16 N

RANGE 5 E



LOCATION  
(Indicated by 'X')

SEAL:



### BASIS FOR MONUMENT LOCATION

(Use reverse side if necessary)

Show info such as: History of corner, with reference to Vol. and pg, dates, surveyor; exact description of monument replaced; if location computed, by taped or EDM traverse; landowner remarks, etc.

Ran EDM/T2 traverse around Sections 8, 9, 10, 11, and 12 to determine search areas.

Investigation yielded no evidence of the original corner, any remonumentation, or any witness accessories.

Relocated corner by single proportionate measure between the adjacent section corners.

Set 10-5-76.

MON & TIES OK  
1-15-81 RN-SK  
ALL OK 7-22-85 DK-SS  
ALL OK 10-5-90 JG-SS  
1 NEW TIE 12-07-10 GR-SS

CERTIFIED CORRECT:

*Dale C Hagen*  
Registered Land Surveyor

DATE: 11-30-76

### TIE SKETCH

(Show at least four ties)

#### NOTE

Ties in trees to nail in disc.

