

PUBLIC LAND SURVEY MONUMENT RECORD

TYPE OF MONUMENT: HARRISON
ADAMS COUNTY COORDINATES, NAD 83 (2007)

N. 185843.290

E. 499270.463

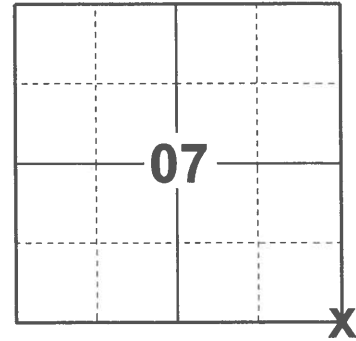
ELEVATION- _____ DATUM _____

FIELD WORK DATE: 01/13/2021

BASIS FOR MONUMENT LOCATION

1972 - PLS 981 FOUND "PK" SET MONUMENT MAY 10, 1972

2021 - PLS 2675 FOUND HARRISON MONUMENT 4"± BELOW ROAD SURFACE AND 1 WITNESS. THE MONUMENT AGREES WITH THE EXISTING WITNESS. ACCEPTED THE HARRISON AS THE CORNER LOCATION. LOCATED 4 RIW MONUMENTS AS TIES AND MEASURED TO THE EXISTING WITNESS.



LOCATION
(INDICATE CORNER BY "X")

SEAL:



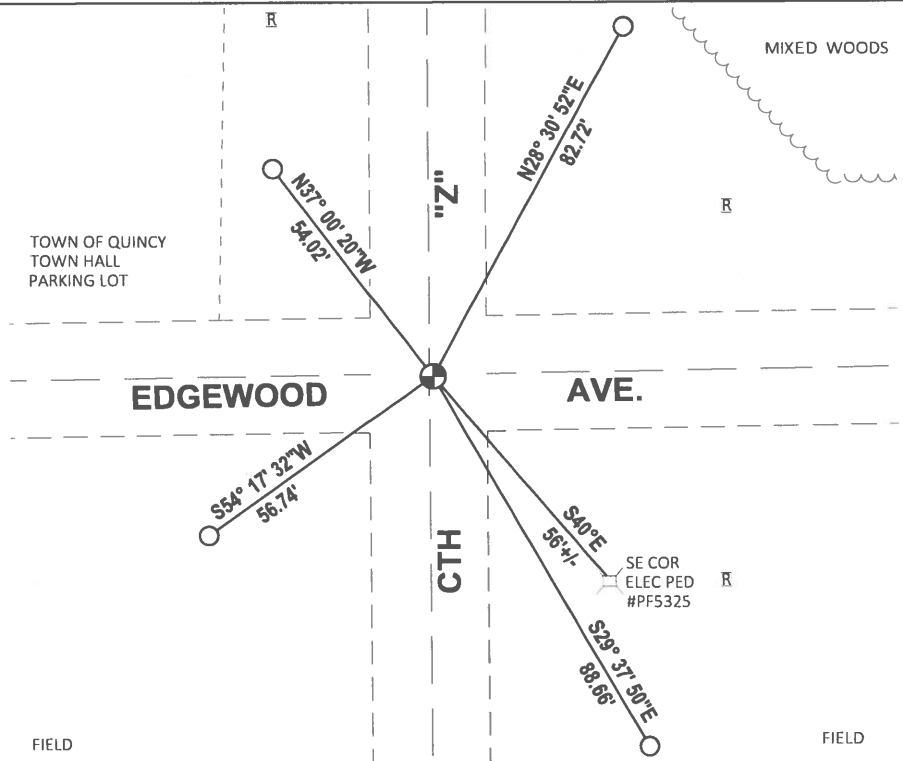
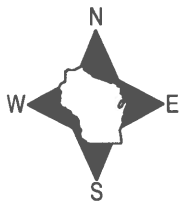
DATA SHOWN HERE ON THIS TIE SHEET IS CORRECT AND COMPLETE TO THE BEST OF MY KNOWLEDGE AND BELIEF.

PROFESSIONAL LAND SURVEYOR

DATE 2/23/2021

- TIE SKETCH

NOTE: THER CORNER LANDS 1± EAST OF CENTERLINE OF CTH "Z" AND 0.5± SOUTH OF CENTERLINE OF EDGEWOOD AVE.



- FOUND 3/4" IRON ROD
- FOUND HARRISON MONUMENT
- R RIW POST

FIELD

FIELD

ADAMS COUNTY

Survey Monument Record

TYPE OF MONUMENT: 30" HARRISON"

STATE PLANE COORDINATES: N. _____

E. _____

ELEVATION — M.S.L. DATUM: _____

THETA ANGLE: _____

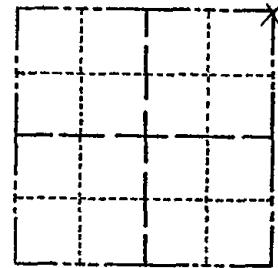
FIELD BOOK: L03 PAGE 124

CORNER NO. 124

SECTION 18

TOWN 16

RANGE 5



LOCATION
(Indicated by 'X')

SEAL:

BASIS FOR MONUMENT LOCATION

(Use reverse side if necessary)

Show info such as: History of corner, with reference to Vol. and pg, dates, surveyor; exact description of monument replaced; if location computed, by taped or EDM traverse; landowner remarks, etc.

Found "PK" set monument May 10, 1972

Sam T. Mullen S981 (R.L.S.)

CORNER O.K. 10/28/75 D.M. S.S.
 CORNER OK 10/1/80 DM-SJ
 CORNER OK 4/15/85 D.K.
 ALL OK 2-8-90 KZ
 2-GONE, 2-NEW 2-7-95 JG
 ALL OK 2-10-00 T.L. S.S.
 MON OK - 2 TIES REMAIN 12-20-10

CERTIFIED CORRECT:

Registered Land Surveyor

DATE: _____

TIE SKETCH

(Show at least four ties)

