

## PUBLIC LAND SURVEY MONUMENT RECORD

TYPE OF MONUMENT: HARRISON (BROKEN-TOP)  
 ADAMS COUNTY COORDINATES, NAD 83 (2007)

N. 185934.422  
 E. 504556.848

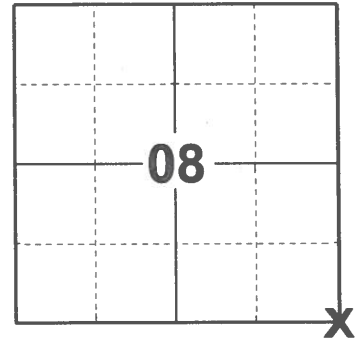
ELEVATION- \_\_\_\_\_ DATUM \_\_\_\_\_

FIELD WORK DATE: 01/13/2021

### BASIS FOR MONUMENT LOCATION

1976 - PLS 878 EXCAVATED WITH BACKHOE. FOUND 10"X12"X14" SANDSTONE. LOWERED STONE AND SET HARRISON ON TOP. STONE CALLED FOR BY COUNTY SURVEYOR RECORD, VOL. 1, PAGE 101.

2021 - PLS 2675 FOUND HARRISON (BROKEN-TOP) MONUMENT 4"± BELOW THE ROAD SURFACE AND 1 TIE. THE MONUMENT AGREES WITH THE EXISTING TIE. ACCEPTED THE HARRISON (BROKEN-TOP) AS THE CORNER LOCATION. SET 2 NEW TIES, MEASURED TO A FOUND PROPERTY IRON, AND TO THE EXISTING TIE.



LOCATION

(INDICATE CORNER BY "X")

SEAL:



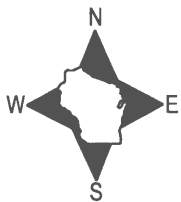
DATA SHOWN HERE ON THIS TIE SHEET IS CORRECT AND COMPLETE TO THE BEST OF MY KNOWLEDGE AND BELIEF.

PROFESSIONAL LAND SURVEYOR

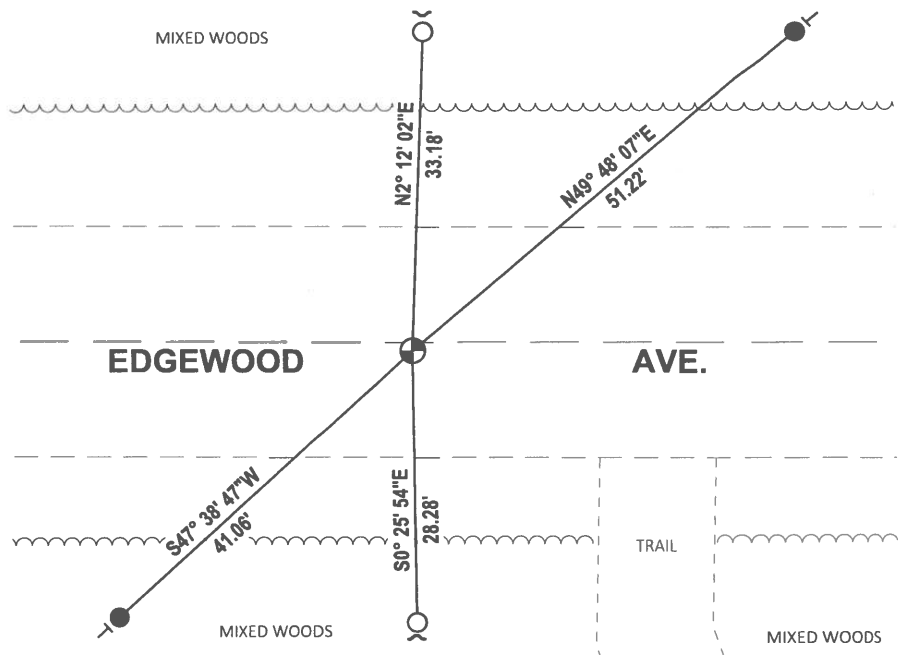
DATE 2/23/2021

### TIE SKETCH

NOTE: THE CORNER LANDS 1'± SOUTH OF CENTERLINE OF EDGEWOOD AVE.



- SET 3/4" x 18" IRON REBAR, 1.50#/FT
- FOUND 3/4" IRON ROD
- ⊕ FOUND HARRISON (BROKEN-TOP) MONUMENT
- ~ STEEL FENCE POST
- ┆ VINYL "T" POST



**ADAMS COUNTY**

**Survey Monument Record**

TYPE OF MONUMENT: Harrison standrad

STATE PLANE COORDINATES: N \_\_\_\_\_

E \_\_\_\_\_

ELEVATION — M.S.L. DATUM: \_\_\_\_\_

THETA ANGLE: \_\_\_\_\_

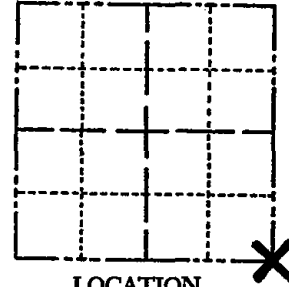
FIELD BOOK: file PAGE \_\_\_\_\_

CORNER NO. 1012 45

SECTION 8

TOWN 16

RANGE 5



LOCATION  
(Indicated by 'X')

SEAL:



**BASIS FOR MONUMENT LOCATION**

(Use reverse side if necessary)

Show info such as: History of corner, with reference to Vol. and pg, dates, surveyor; exact description of monument replaced; if location computed, by taped or EDM traverse; landowner remarks, etc.

Excavated with backhoe. Found 10x12x14" sandstone. Lowered stone and set Harrison on top.  
Stone called for by County surveyor record, V01. 1, Page 101.

TOP OF MON. BROKEN OFF 4"  
TIES OK KV-SK 10/1/80  
Ties OK TOP BROKEN OFF @ 4/15/85 D.K.  
ALL OK 2-5-90 KZ  
" " 1-11-95 JG-SS  
2 NEW 2-10-00 JLI-SS  
4 TIES/MON OK 3-3-05 JS-SS  
OK 10-26-10 SS

CERTIFIED CORRECT:

*Anthony B. Kiedrowski*  
Registered Land Surveyor

DATE: 8/26/76

**TIE SKETCH**

(Show at least four ties)

**NOTE:**

Ties in trees  
to nail in disc.

