

PUBLIC LAND SURVEY MONUMENT RECORD

TYPE OF MONUMENT: HARRISON (BROKEN-TOP)
 ADAMS COUNTY COORDINATES, NAD 83 (2007)

N. 185954.137

E. 507203.889

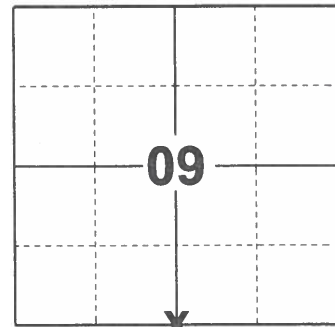
ELEVATION- _____ DATUM _____

FIELD WORK DATE: 01/13/2021

BASIS FOR MONUMENT LOCATION

1977 - PLS 1103 RAN EDM/T2 TRAVERSE AROUND SECTIONS 8, 9, 10, 11, AND 12 TO DETERMINE SEARCH AREAS FOR INVESTIGATION. EXCAVATION WITH BACKHOE BY A.B. KIEDROWSKI, ADAMS COUNTY SURVEYOR, YIELDED NO EVIDENCE OF THE ORIGINAL CORNER OR ANY REMONUMENTATION. SET CORNER EQUIDISTANT BETWEEN ADJACENT SECTION CORNERS AT THE RECORD DISTANCE FROM THE CENTER OF SECTION 9 (WILLIAMS IN 1871) SET HARRISON MONUMENT 9-14-1976.

2021 - PLS 2675 FOUND HARRISON (BROKEN-TOP) MONUMENT 6"± BELOW THE GROUND AND DID NOT RECOVER ANY EXISTING TIES OR WITNESSES. ACCEPTED THE HARRISON (BROKEN-TOP) AS THE CORNER LOCATION AND SET 4 NEW TIES.



LOCATION

(INDICATE CORNER BY "X")

SEAL:



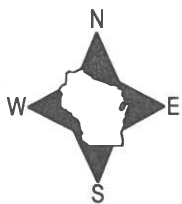
DATA SHOWN HERE ON THIS TIE SHEET IS CORRECT AND COMPLETE TO THE BEST OF MY KNOWLEDGE AND BELIEF.

PROFESSIONAL LAND SURVEYOR

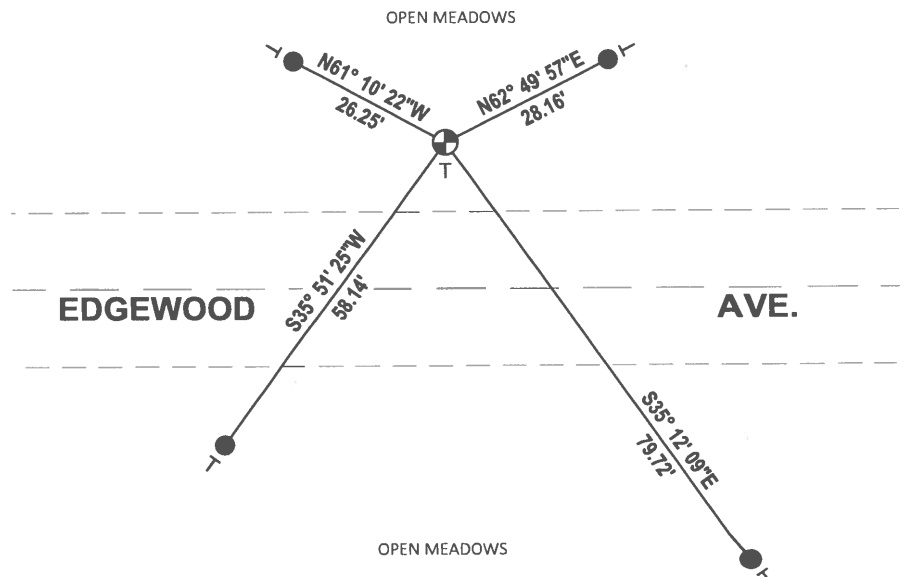
DATE 2/23/2021

- TIE SKETCH

NOTE: THE CORNER LANDS 23'± NORTH OF CENTERLINE OF EDGEWOOD AVE.



- SET 3/4" x 18" IRON REBAR, 1.50#/FT
- ⊕ FOUND HARRISON (BROKEN-TOP) MONUMENT
- ┊ VINYL "T" POST



ADAMS COUNTY

Survey Monument Record

TYPE OF MONUMENT: HARRISON

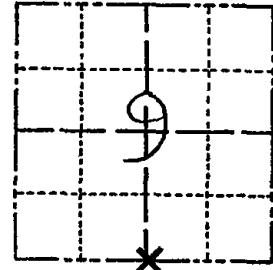
STATE PLANE COORDINATES: N _____
E _____

ELEVATION — M.S.L. DATUM: _____

THETA ANGLE: _____

FIELD BOOK: 38 PAGE 15

CORNER NO. 46
SECTION 9
TOWN 16
RANGE 5



LOCATION
(Indicated by 'X')

BASIS FOR MONUMENT LOCATION

(Use reverse side if necessary)

Show info such as: History of corner, with reference to Vol. and pg, dates, surveyor; exact description of monument replaced; if location computed, by taped or EDM traverse; landowner remarks, etc.

SEAL:



Ran EDM/T2 traverse around Sections 8, 9, 10, 11 and 12 to determine search areas for investigation.

Excavation with backhoe by A.B. Kiedrowski, Adams County Surveyor, yielded no evidence of the original corner or any remonumentation.

Set corner equidistant between adjacent section corners at the record distance from the center of Section 9 (Williams in 1871.)

Set Harrison monument 9-14-76.

CORNER OK KV-SK 10/1/80
TIES OK 4/15/85 O.K.
2-GONE, 2-NEW 8-29-90 GR-JG
ALL OK 1-11-95 JG-SS
ALOK+INEN 2-10-00 TL-SS

CERTIFIED CORRECT:

Dale Hagen
Registered Land Surveyor
DATE: 7-5-77

TIE SKETCH 1-GONE, 1-NEW 10-31-05-JG 8" ASPEN/DND ✓
OK 7-7-10 UNDERWATER SIGN

(Show at least four ties)

NOTE

Ties in trees to nail in disc.

NOTE

Bearings are local magnetic.

