

PUBLIC LAND SURVEY MONUMENT RECORD

TYPE OF MONUMENT: HARRISON
 ADAMS COUNTY COORDINATES, NAD 83 (2007)

N. 185954.741

E. 509851.215

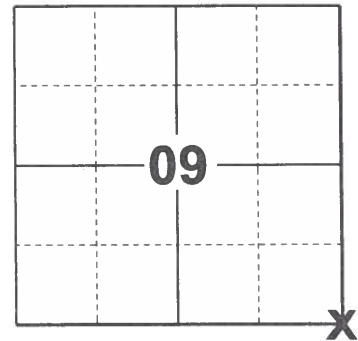
ELEVATION- _____ DATUM _____

FIELD WORK DATE: 01/13/2021

BASIS FOR MONUMENT LOCATION

1977 - PLS 1103 RAN EDM/T2 TRAVERSE AROUND SECTIONS 8, 9, 10, 11, AND 12 TO DETERMINE SEARCH AREAS FOR INVESTIGATION. EXCAVATION WITH BACKHOE BY A.B. KIEDROWSKI, ADAMS COUNTY SURVEYOR, YIELDED NO EVIDENCE OF THE ORIGINAL CORNER OR ANY SUBSEQUENT REMONUMENTATION. RELOCATED CORNER AFTER ANALYSIS OF THE FIELD MEASUREMENTS, THE ORIGINAL SURVEY NOTES AND RESURVEY NOTES (WILLIAMS IN 1871). SET HARRISON MONUMENT 9-14-1976.

2021 - PLS 2675 FOUND HARRISON MONUMENT 2"± BELOW THE ROAD SURFACE, 1 TIE, AND 1 WITNESS. THE MONUMENT AGREES WITH BOTH THE EXISTING TIE AND WITNESS. ACCEPTED THE HARRISON AS THE CORNER LOCATION. SET 3 NEW TIES AND MEASURED TO THE EXISTING TIE AND WITNESS.



LOCATION
 (INDICATE CORNER BY "X")

SEAL:



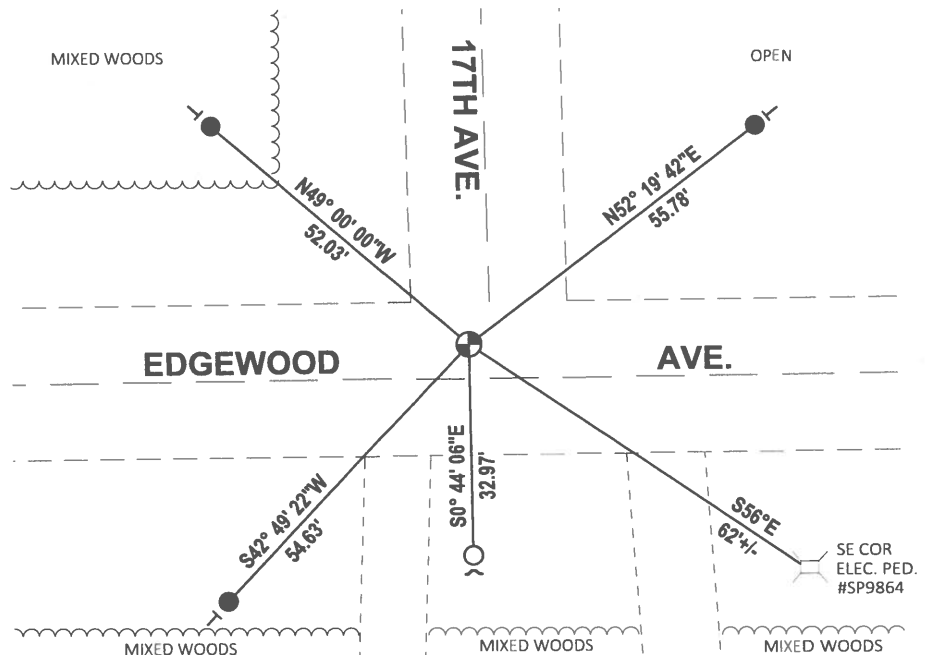
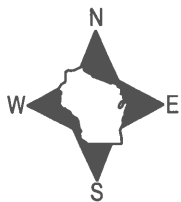
DATA SHOWN HERE ON THIS TIE SHEET IS CORRECT AND COMPLETE TO THE BEST OF MY KNOWLEDGE AND BELIEF.

PROFESSIONAL LAND SURVEYOR

DATE 2/23/2021

TIE SKETCH

NOTE: THE CORNER LANDS 5'± NORTH OF EDGEWOOD AVE. CENTERLINE.



- SET 3/4" x 18" IRON REBAR, 1.50#/FT
- FOUND 3/4" IRON ROD
- ⊕ FOUND HARRISON MONUMENT
- ~ STEEL FENCE POST
- | VINYL "T" POST

ADAMS COUNTY

Survey Monument Record

TYPE OF MONUMENT: HARRISON

STATE PLANE COORDINATES: N _____

E _____

ELEVATION — M.S.L. DATUM: _____

THETA ANGLE: _____

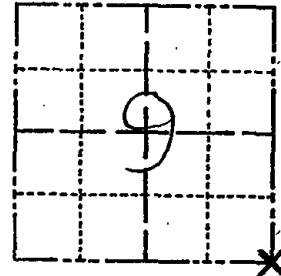
FIELD BOOK: 38 PAGE 15

CORNER NO. 47

SECTION 9

TOWN 16

RANGE 5



LOCATION
(Indicated by 'X')

BASIS FOR MONUMENT LOCATION

(Use reverse side if necessary)

Show info such as: History of corner, with reference to Vol. and pg, dates, surveyor; exact description of monument replaced; if location computed, by taped or EDM traverse; landowner remarks, etc.

SEAL:



Ran EDM/T2 traverse around Sections 8,9, 10, 11 and 12 to determine search areas for investigation.

Excavation with backhoe by Anthony B. Kiedrowski, Adams County Surveyor, yielded no evidence of the original corner or any subsequent remonumentation.

Relocated corner after analysis of the field measurements, the original survey notes and resurvey notes (Williams in 1871).

Set Harrison Monument 9-14-76.

CORNER OK KV-SK 10/1/80
 1 GONE no new 4/15/85
 OK 2-8-90 KZ-SS
 OK 1-11-95 JG-SS

3NEW 3/3/05 SS.JS.

CERTIFIED CORRECT:

Dale C Hagen
 Registered Land Surveyor

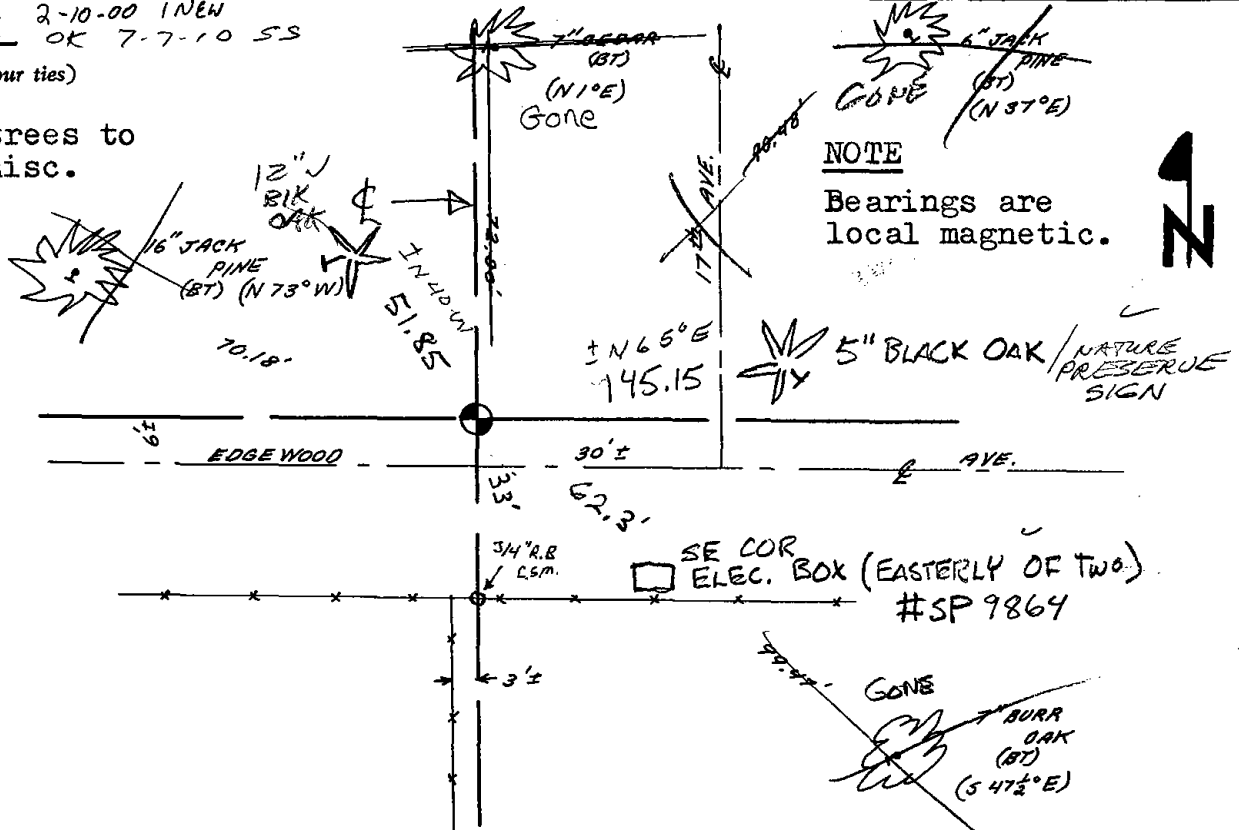
DATE: 7-5-77

TIE SKETCH 2-10-00 INEW
 OK 7-7-10 SS

(Show at least four ties)

NOTE

Ties in trees to nail in disc.



NOTE

Bearings are local magnetic.

