

12 SECTION 16 TOWN 05 RANGE

ADAMS COUNTY

COUNTY CORNER NO: 53
ROMPORTOL ID: 41605120000

PUBLIC LAND SURVEY MONUMENT RECORD

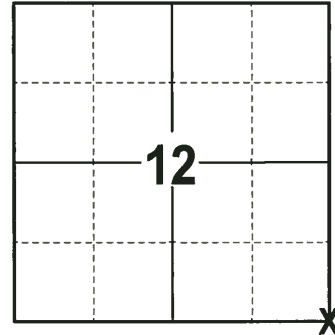
TYPE OF MONUMENT: HARRISON
ADAMS COUNTY COORDINATES, NAD 83 (2007)

N. 185837.541

E. 525881.337

ELEVATION- DATUM

FIELD WORK DATE: 11/13/2017



LOCATION
(INDICATE CORNER BY "X")

SEAL:



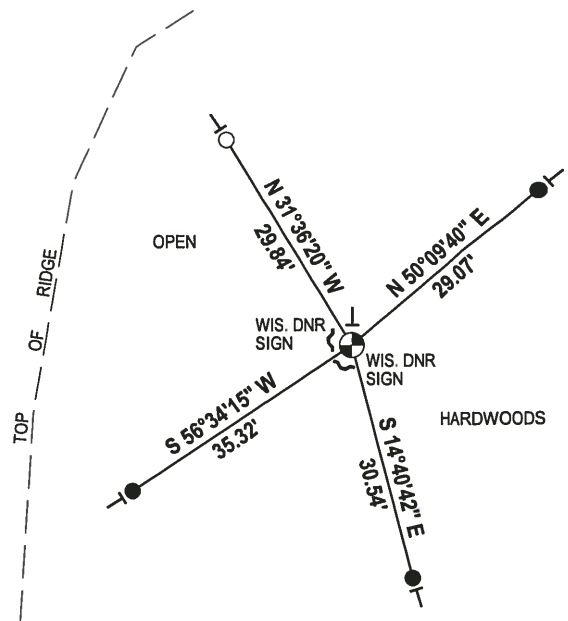
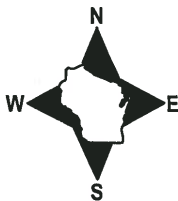
DATA SHOWN HERE ON THIS TIE SHEET IS CORRECT AND COMPLETE TO THE BEST OF MY KNOWLEDGE AND BELIEF.

PROFESSIONAL LAND SURVEYOR

DATE 12-4-17

- TIE SKETCH

NOTE: THE CORNER FALLS 200± EAST OF THE TOP OF THE RIDGE.



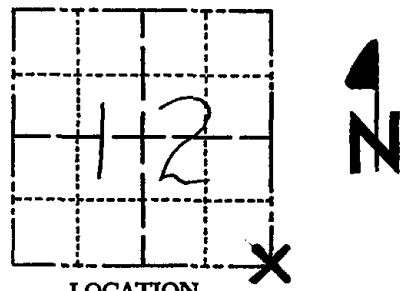
- 3/4" x 18" IRON REBAR SET, 1.50#/FT
- 1-1/4" O.D. IROD PIPE FOUND
- ⊕ HARRISON FOUND
- ~ STEEL FENCE POST
- VINYL "T" POST

ADAMS COUNTY

Survey Monument Record

TYPE OF MONUMENT: Harrison Monument
 STATE PLANE COORDINATES: N 185837.620
 E 525881.333
 ELEVATION — M.S.L. DATUM: 1038.38
 THETA ANGLE: _____
 FIELD BOOK: 37 PAGE 63

CORNER NO. 53
¹⁴⁷⁴
 SECTION 12
 TOWN 16
 RANGE 5



LOCATION
(Indicated by 'X')

SEAL:



BASIS FOR MONUMENT LOCATION

(Use reverse side if necessary)

Show info such as: History of corner, with reference to Vol. and pg. dates, surveyor; exact description of monument replaced; if location computed, by taped or EDM traverse; landowner remarks, etc.

Ran EDM/T2 traverse around Sections 8, 9, 10, 11 and 12 to determine search areas.

Was existing Harrison monument set 30 feet Northerly from intersection of down fencelines. Excavation at intersection yielded round stain of ancient Post. This location fit six remaining bearing trees:

- 1) Original Bearing trees
 - 11" Yel Pine N20°W 13 links - Stub remaining
 - 12" Blk Pine S37°E 33 links - Remains in Stump Hole
- 2) County Surveyor Barrett - Vol 1, Page 1 - (1902)
 - 8" Blk Oak S37½°W 53 links - Stump Hole Remains, Tree down
- 3) County Surveyor Phillips - (1940)
 - 11" Blk Oak N30°W 59 links - Standing
 - 7" Blk Oak S55½°W 111 links - Standing
 - 6" Blk Oak S63E 41 links - Standing

CERTIFIED CORRECT

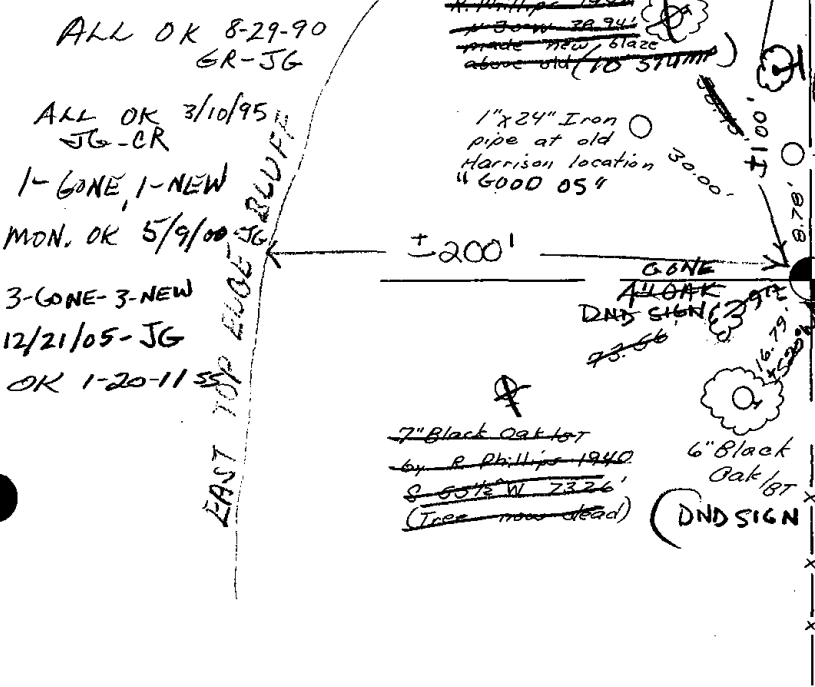
Dale C Hagen
 Registered Land Surveyor
 DATE: 11-30-76

Remonumented post hole on 7-26-76.

ALL OK 6-26-85 GR-SS

TIE SKETCH

(Show at least four ties)



NOTE:

Ties in trees to nail in disc.

(STATE NATURAL SIGNS WEST & SOUTH OF CORNER)

(NEW 05" DND FACES WEST 8" Black Oak / NO BT)

WALK EAST AT FIRE # 2596
 MON & TIES OK RN-SK 1/15/81