

PUBLIC LAND SURVEY MONUMENT RECORD

TYPE OF MONUMENT: HARRISON (BROKEN-TOP)
 ADAMS COUNTY COORDINATES, NAD 83 (2007)

N. 180616.625

E. 515217.966

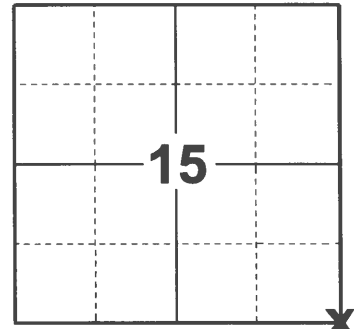
ELEVATION- - - - - DATUM - - - - -

FIELD WORK DATE: 01/22/2021

BASIS FOR MONUMENT LOCATION

1977 - PLS 1103 RAN EDM/T2 TRAVERSE AROUND SECTION 14 AND PARTS OF ADJOINING SECTIONS TO DETERMINE SEARCH AREA FOR INVESTIGATION. FOUND REMNANTS OF BEARING TREE PER M.C. SMITH (BLACK OAK - 10 - N23-1/2°E - 22). RELOCATED CORNER FROM REMNANTS, BUT COULD FIND NO EVIDENCE OF THE CORNER. SET HARRISON MONUMENT ON 12-14-1976.

2021 - PLS 2675 FOUND HARRISON (BROKEN-TOP) MONUMENT 6"± BELOW THE TRAIL EDGE AND DIDN'T FIND ANY EXISTING TIES AND WITNESSES DUE TO THE RECENT LOGGING ACTIVITY. ACCEPTED THE HARRISON (BROKEN-TOP) AS THE CORNER LOCATION. SET 4 NEW TIES.



LOCATION
 (INDICATE CORNER BY "X")

SEAL:

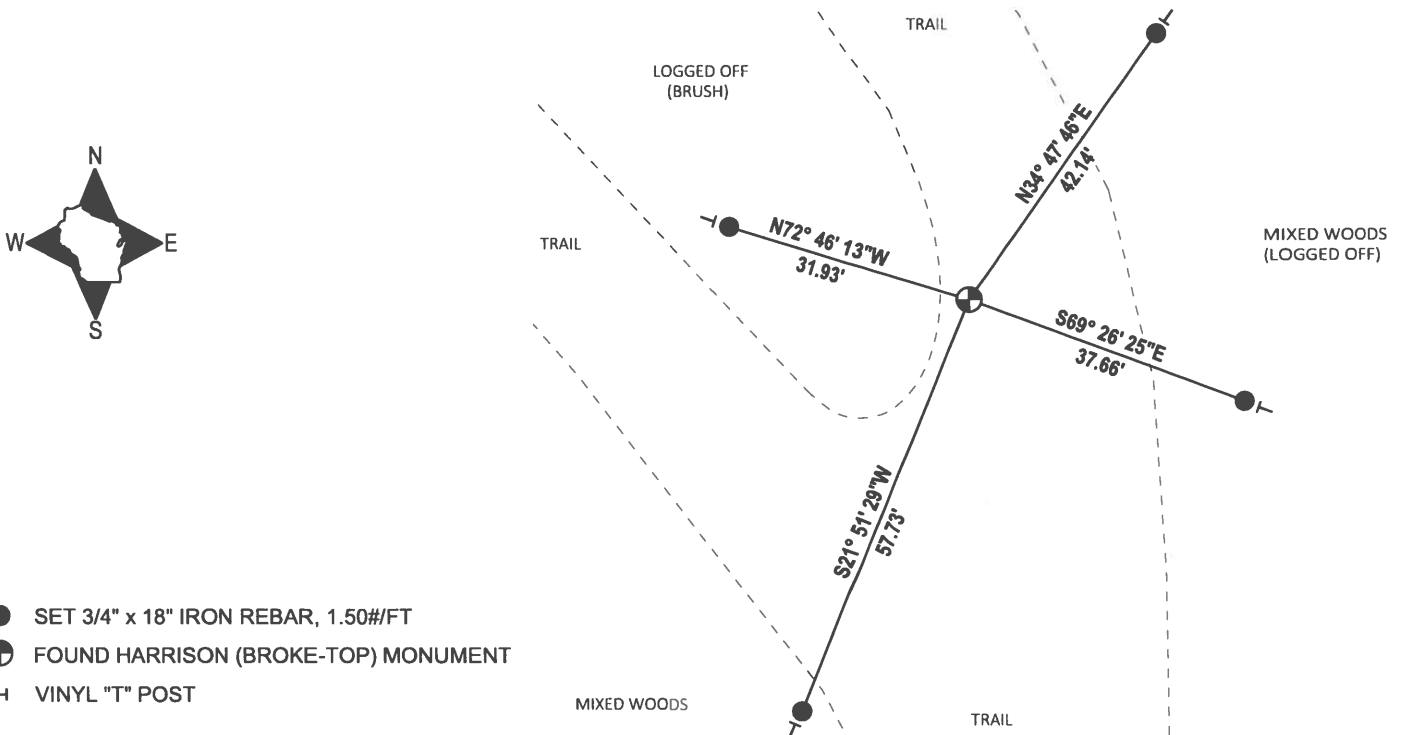


DATA SHOWN HERE ON THIS TIE SHEET IS CORRECT AND COMPLETE TO THE BEST OF MY KNOWLEDGE AND BELIEF.

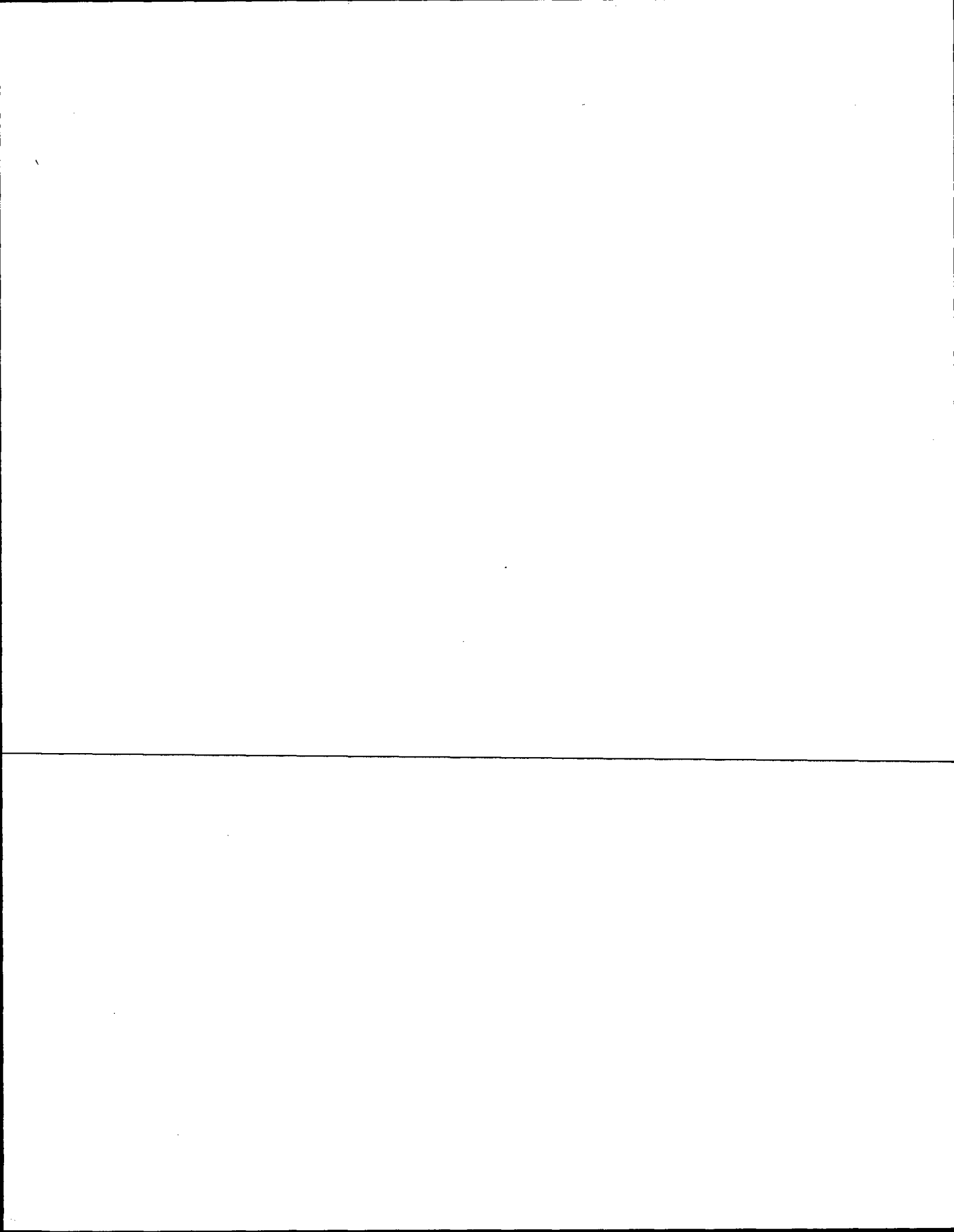
PROFESSIONAL LAND SURVEYOR

DATE 2/23/2021

TIE SKETCH



- SET 3/4" x 18" IRON REBAR, 1.50#/FT
- ⊕ FOUND HARRISON (BROKE-TOP) MONUMENT
- VINYL "T" POST

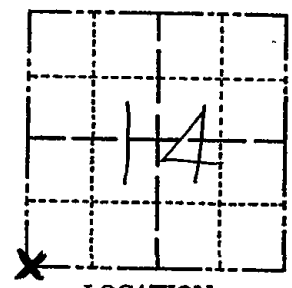


ADAMS COUNTY

Survey Monument Record

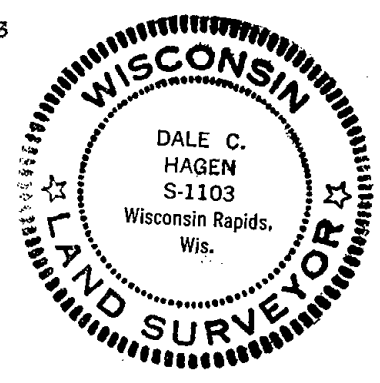
CORNER NO. 69
SECTION 14
TOWN 16
RANGE 5

TYPE OF MONUMENT: HARRISON
STATE PLANE COORDINATES: N 43° 51' 43.6"
HAND HELD GPS E 089° 52' 40.2"
ELEVATION — M.S.L. DATUM: _____
THETA ANGLE: _____
FIELD BOOK: 38 PAGE 24



LOCATION
(Indicated by 'X')

SEAL:



BASIS FOR MONUMENT LOCATION

(Use reverse side if necessary)

Show info such as: History of corner, with reference to Vol. and pg, dates, surveyor; exact description of monument replaced; if location computed, by taped or EDM traverse; landowner remarks, etc.

Ran EDM/T2 traverse around Section 14 and parts of adjoining sections to determine search area for investigation.

Found remnants of ~~original~~ bearing tree per M.C.Smith (Blk Oak - 10 - N 23½ E - 22).

Relocated corner from remnants, but could find no evidence of the corner.

Set Harrison Monument on 12-14-76.

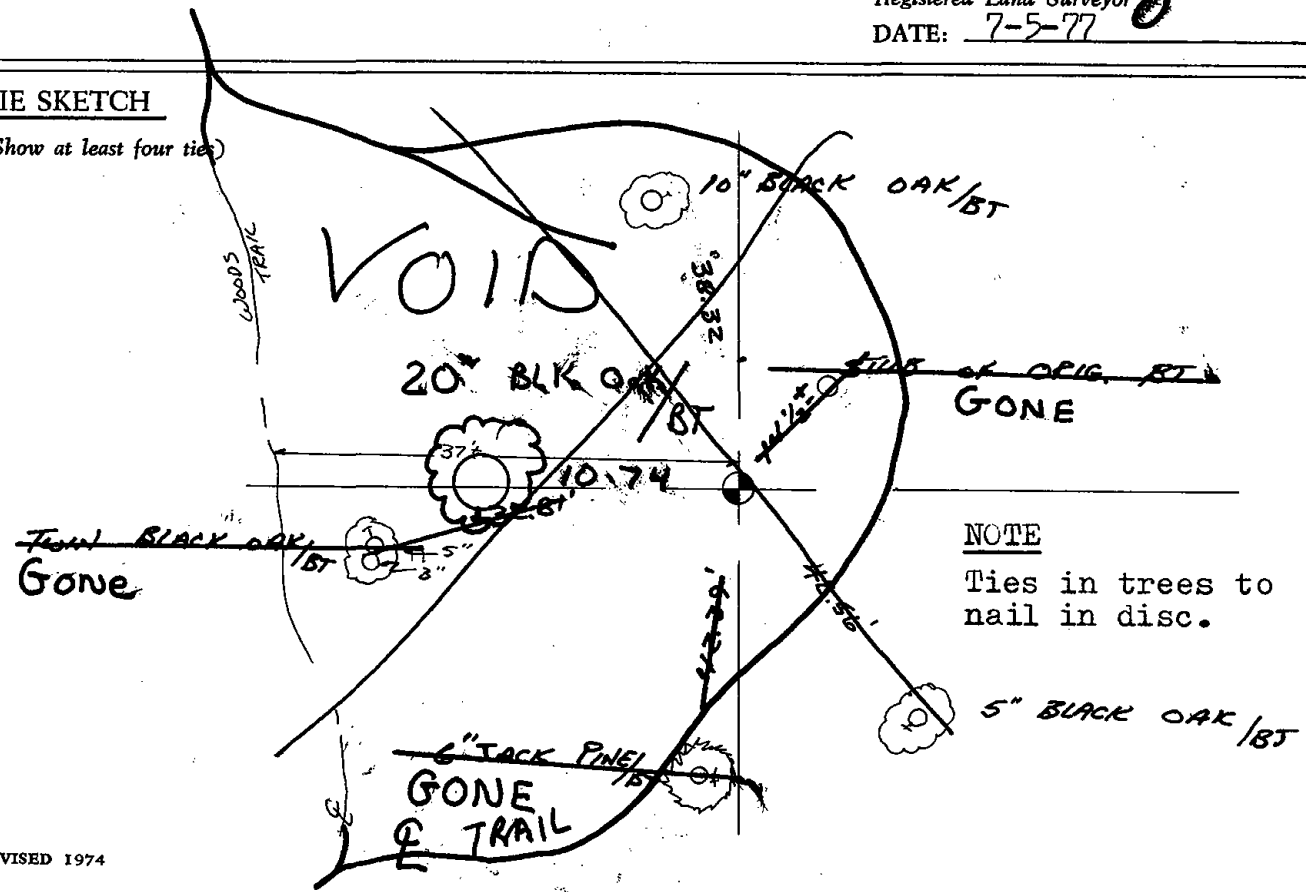
COR OK 10/3/86 KV-SK

3 Gone 1 new 6-85 OK
See REVERSE SIDE

CERTIFIED CORRECT:
Dale C. Hagen
Registered Land Surveyor
DATE: 7-5-77

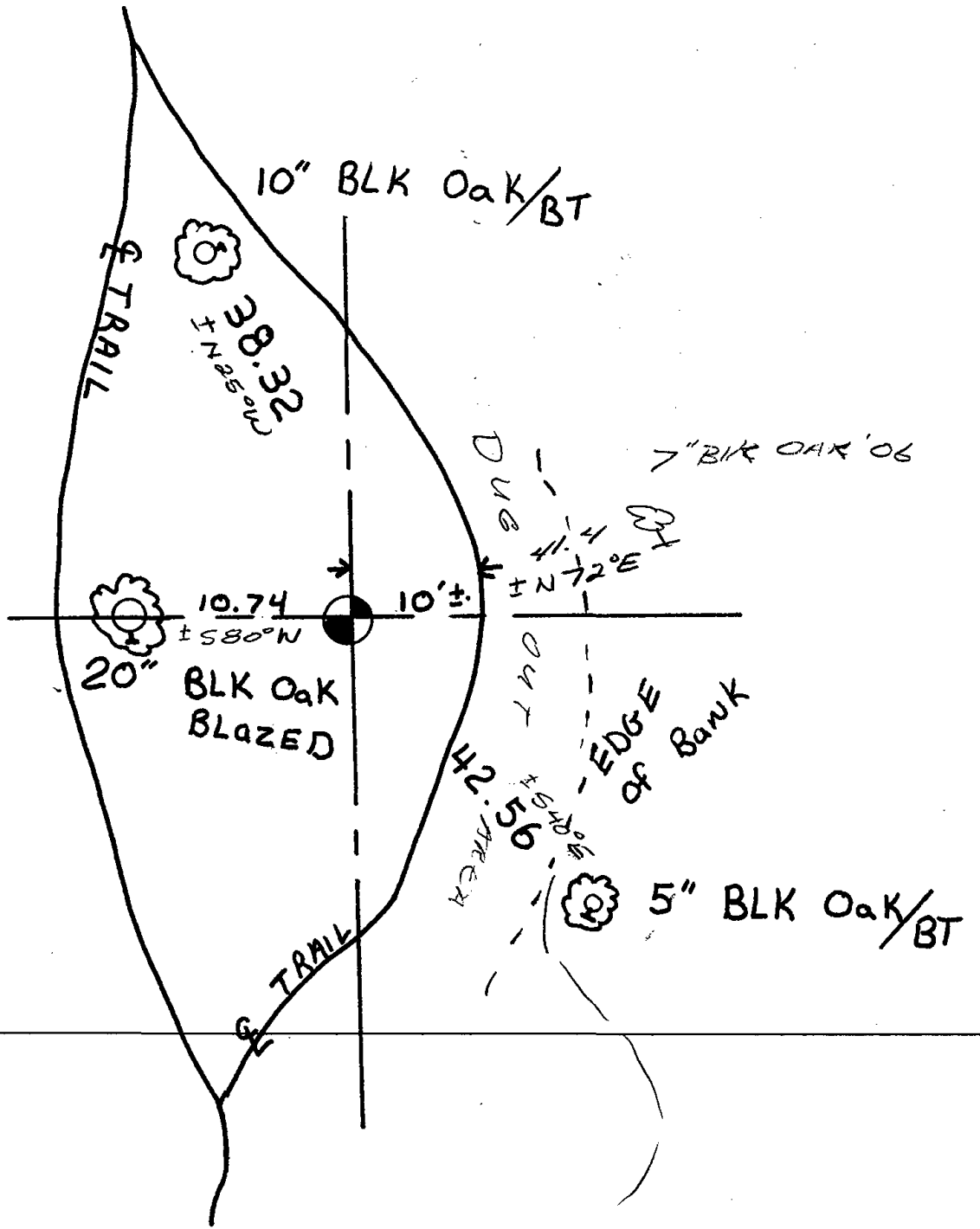
TIE SKETCH

(Show at least four ties)



NOTE

Ties in trees to nail in disc.



ALL OK 6-85 DK

ALL OK 1-9-90 SS

1 NEW TIE 1-11-06 SS

12-09-10 GR - OK