

PUBLIC LAND SURVEY MONUMENT RECORD

TYPE OF MONUMENT: HARRISON
 ADAMS COUNTY COORDINATES, NAD 83 (2007)

N. 177950.090

E. 515238.368

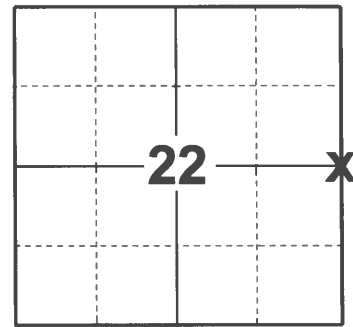
ELEVATION- DATUM

FIELD WORK DATE: 01/20/2021

BASIS FOR MONUMENT LOCATION

1981 - PLS 1444 THIS CORNER WAS SET EQUIDISTANT AND ON A STRAIGHT LINE BETWEEN SECTION CORNERS. NO EVIDENCE OF THE ORIGINAL CORNER OR ANY RESURVEY CORNER WAS FOUND.

2021 - PLS 2675 FOUND A HARRISON MONUMENT FLUSH WITH THE GROUND SURFACE AND 3 WITNESSES. THE MONUMENT AGREES WITH ALL WITNESSES. ACCEPTED THE HARRISON AS THE CORNER LOCATION. SET 4 NEW TIES AND MEASURED TO THE EXISTING WITNESSES.



LOCATION
 (INDICATE CORNER BY "X")

SEAL:

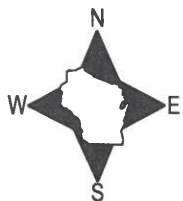


DATA SHOWN HERE ON THIS TIE SHEET IS CORRECT AND COMPLETE TO THE BEST OF MY KNOWLEDGE AND BELIEF.

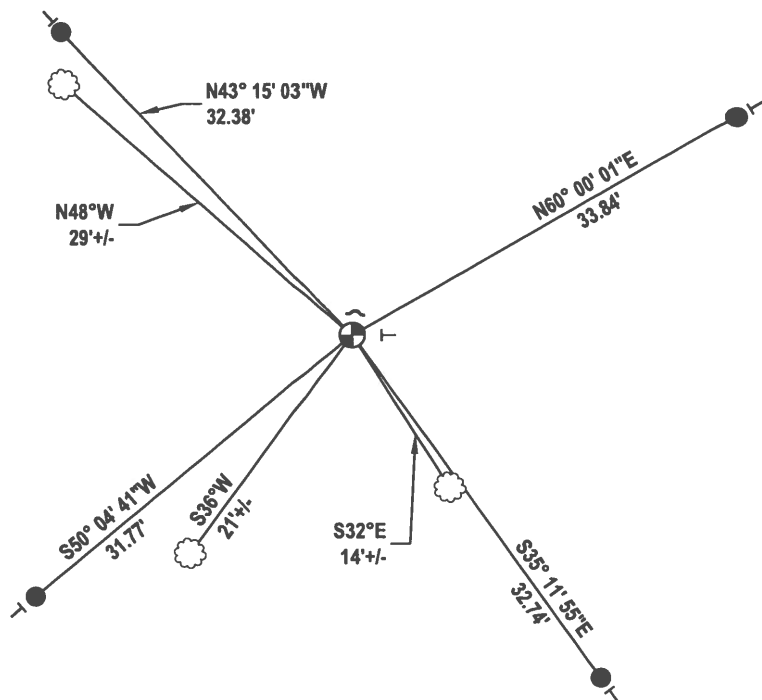
PROFESSIONAL LAND SURVEYOR

DATE 2/23/2021

- TIE SKETCH



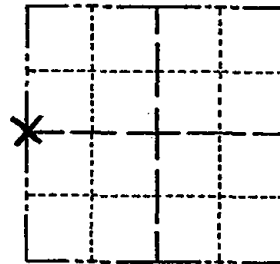
- SET 3/4" x 18" IRON REBAR, 1.50#/FT
- ⊕ FOUND HARRISON MONUMENT
- ✓ STEEL FENCE POST
- ┊ VINYL "T" POST
- ☁ WITNESS TREE



Government Land Corner Certificate

ADAMS County
 TYPE OF MONUMENT: HARRISON
 STATE PLANE COORDINATES: N 43 51' 17.2"
GPS NAV E 089 52' 39.9"
 ELEVATION — M.S.L. DATUM: 1
 THETA ANGLE: _____
 FIELD BOOK: 76 PAGE 49
 DRAWN BY: LANCE J. HABECK

CORNER NO. 78
 SECTION 23
 TOWN 16
 RANGE 5



LOCATION
(Indicated by 'X')

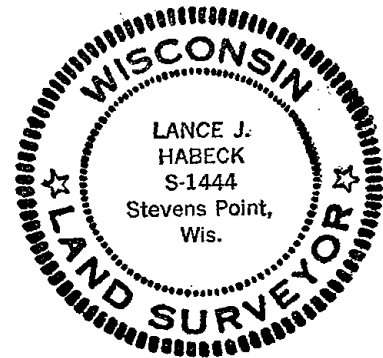
BASIS FOR MONUMENT LOCATION

Show info such as: History of corner, with reference to Vol. and pg., dates, surveyor; exact description of monument replaced; if location computed, by taped or EDM traverse; landowner remarks, etc. (Use reverse side if necessary)

This corner was set equidistant and on a straight line between section corners. No evidence of the the original corner or any resurvey corner was found.

ALL OK 1-9-90-SS
 ALL OK 1-11-06-JG
 " " 12-8-10 GR

SEAL:



DATA SHOWN HERE ON
CERTIFIED CORRECT:

Lance J. Habeck
Registered Land Surveyor

DATE: 1/6/81

TIE SKETCH

Show at least four ties, also fence lines, roads, topo, size and type of witness trees and if off road - best way to arrive at corner.

