

PUBLIC LAND SURVEY MONUMENT RECORD

TYPE OF MONUMENT: HARRISON
 ADAMS COUNTY COORDINATES, NAD 83 (2007)

N. 177966.972

E. 520537.065

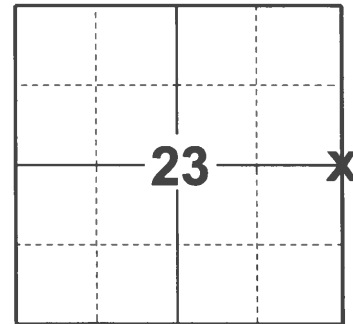
ELEVATION- - - - DATUM - - - -

FIELD WORK DATE: 01/21/2021

BASIS FOR MONUMENT LOCATION

1977 - PLS 1191 RESEARCHED COUNTY SURVEY RECORDS. FOUND SURVEY MADE BY Z. WISE, OCT 27, 1874, RECORDED IN VOL. 2, PG. 109. FOUND NO EVIDENCE OF BEARING TREES OR MONUMENTATION IN SEARCH AREA. SET 1/4 CORNER BY SINGLE PROPORTIONATE MEASURE SOUTH FROM NORTHWEST CORNER AND WEST FROM C1/4 CORNER. CORNER LOCATION COMPUTED FROM TAPED TRAVERSE. PROPORTION DERIVED FROM MEASUREMENT ON NORTH LINE OF THE NW1/4 OF SECTION 24 AND ABOVE SURVEY NOTES.

2021 - PLS 2675 FOUND HARRISON MONUMENT 12"± BELOW MARSH SURFACE AND 2 WITNESS TREES. THE MONUMENT AGREES WITH BOTH WITNESS TREES. ACCEPTED THE HARRISON AS THE CORNER LOCATION. SET 4 NEW TIES AND MEASURED TO THE EXISTING WITNESS TREES.



LOCATION
 (INDICATE CORNER BY "X")

SEAL:

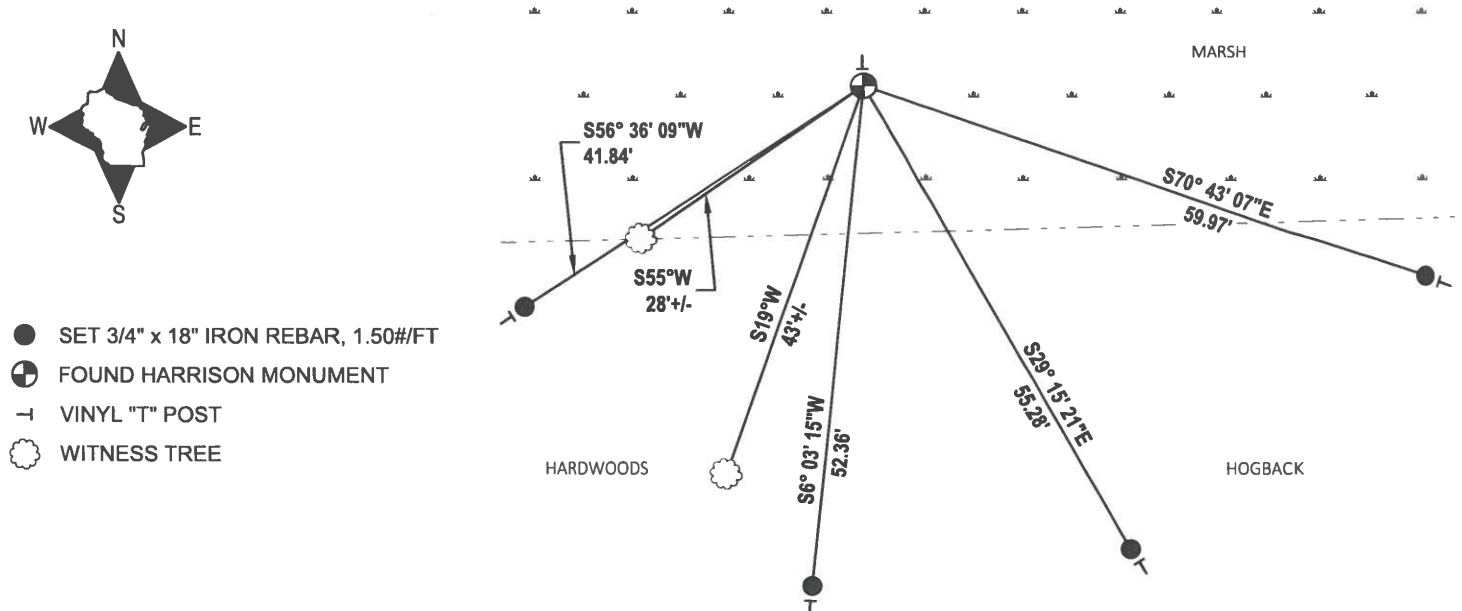


DATA SHOWN HERE ON THIS TIE SHEET IS CORRECT AND COMPLETE TO THE BEST OF MY KNOWLEDGE AND BELIEF.

PROFESSIONAL LAND SURVEYOR

DATE 2/23/2021

TIE SKETCH



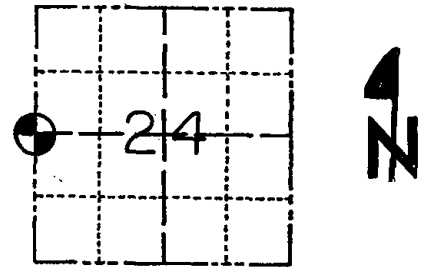
- SET 3/4" x 18" IRON REBAR, 1.50#/FT
- ⊕ FOUND HARRISON MONUMENT
- ┆ VINYL "T" POST
- ☼ WITNESS TREE

Government Land Corner Certificate

ADAMS County

CORNER NO. 79
 SECTION 24
 TOWN 16
 RANGE 5

TYPE OF MONUMENT: STANDARD HARRISON
 STATE PLANE COORDINATES: N 43°51'17.3"
 HAND HELD GPS E 089°51'27.8"
 ELEVATION — M.S.L. DATUM: _____
 THETA ANGLE: _____
 FIELD BOOK: 7701 PAGE 18
 DRAWN BY: D. DONNELLY



LOCATION
(Indicated by 'X')

BASIS FOR MONUMENT LOCATION

Show info such as: History of corner, with reference to Vol. and pg., dates, surveyor; exact description of monument replaced; if location computed, by taped or EDM traverse; landowner remarks, etc. (Use reverse side if necessary)

Researched County survey records. Found survey made by Z. Wise, Oct. 27, 1874, recorded in Vol. 2, Pg. 109. Found no evidence of bearing trees or monumentation in search area. Set $W\frac{1}{4}$ cor. by single proportionate measure south from N.W. cor. and west from $C\frac{1}{4}$ cor. Corner location computed from taped traverse. Proportion derived from measurement on north line of the $NW\frac{1}{4}$ of section 24 and above survey notes.

SEAL:



DATA SHOWN HERE ON
CERTIFIED CORRECT:

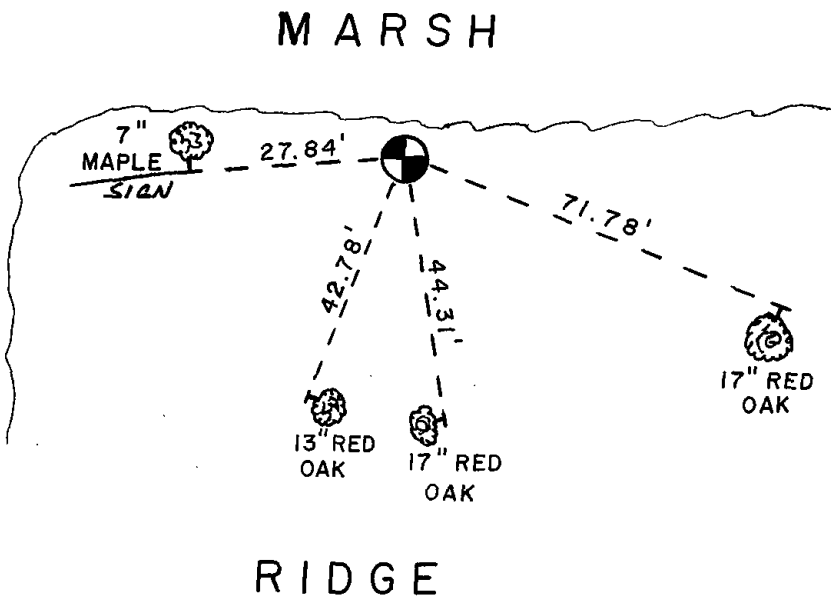
Allen D. Rohde
Registered Land Surveyor

DATE: 12-12-77

TIE SKETCH

Show at least four ties, also fence lines, roads, topo, size and type of witness trees' and if off road - best way to arrive at corner.

NOTE: MEASURED TO P.K. & SHINER IN BEARING TREES WITH BLAZES



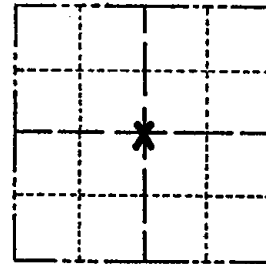
MAINTENANCE RECORD

Date	Init.	Remarks
10/13/80	KV-SK	COR. OK
2-14-85	GR-SS	COR. OK
1-9-90	GR-KZ	OK
12/20/03	JG	OK
12-09-10	GR	OK

Government Land Corner Certificate

ADAMS County
 TYPE OF MONUMENT: 2" IRON PIPE
 STATE PLANE COORDINATES: N _____
 E _____
 ELEVATION — M.S.L. DATUM: _____
 THETA ANGLE: _____
 FIELD BOOK: 7701 PAGE 18
 DRAWN BY: D. DONNELLY

CORNER NO. _____
 SECTION 24
 TOWN 16
 RANGE 5



LOCATION
(Indicated by 'X')

BASIS FOR MONUMENT LOCATION

Show info such as: History of corner, with reference to Vol. and pg., dates, surveyor; exact description of monument replaced; if location computed, by taped or EDM traverse; landowner remarks, etc. (Use reverse side if necessary)

Researched County survey records. Found survey made by Z. Wise, Oct. 27, 1874, recorded in Vol. 2, Pg. 109. Set $C\frac{1}{2}$ cor. by single proportionate measure half the distance and on line between $N\frac{1}{2}$ cor. and $S\frac{1}{2}$ cor. which correlates with above survey notes and best fits occupation in area. Found no evidence of bearing trees or monumentation at corner. Corner computed by E.D.M. traverse.

SEAL:



Note:

Proportion derived from measurement on north line of the $NW\frac{1}{4}$ of section 24 and above survey notes.

DATA SHOWN HERE ON CERTIFIED CORRECT:

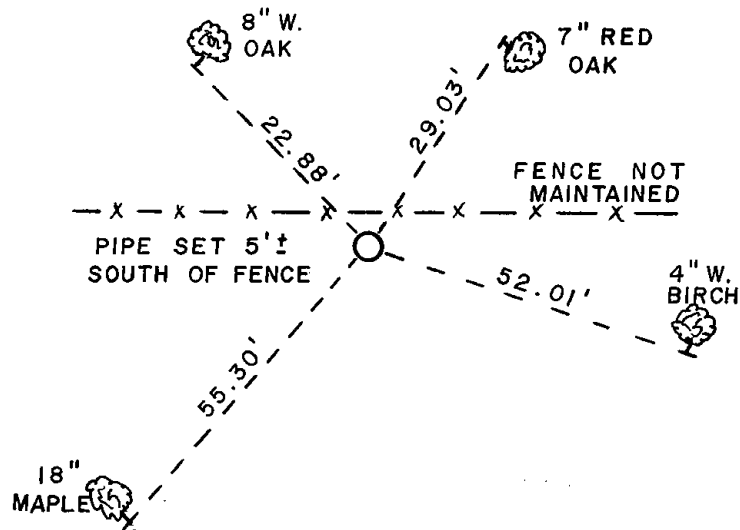
Allen D. Rohde
 Registered Land Surveyor

DATE: 12-12-77

TIE SKETCH

Show at least four ties, also fence lines, roads, topo, size and type of witness trees and if off road - best way to arrive at corner.

NOTE: MEASURED TO P.K. NAIL & SHINER IN BEARING TREES WITH BLAZES



MAINTENANCE RECORD

Date	Init.	Remarks