

20  
SECTION

16  
TOWN

05  
RANGE

# ADAMS COUNTY

COUNTY CORNER NO: 84

ROMPORTOL ID: 41605200020

## PUBLIC LAND SURVEY MONUMENT RECORD

TYPE OF MONUMENT: HARRISON (BROKEN-TOP)  
ADAMS COUNTY COORDINATES, NAD 83 (2007)

N. 175322.257

E. 51996.536

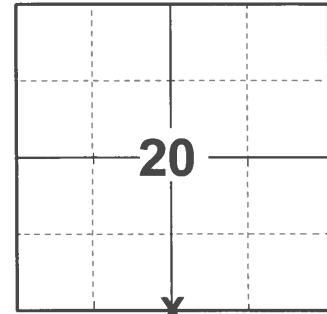
ELEVATION- \_\_\_\_\_ DATUM \_\_\_\_\_

FIELD WORK DATE: 02/16/2021

### BASIS FOR MONUMENT LOCATION

1981 - PLS 1444 THIS CORNER WAS SET ON A STRAIGHT LINE BETWEEN THE NE CORNER AND A 2" IRON PIPE FOUND AND ACCEPTED AS BEING ON THE SECTION LINE. THE QUARTER CORNER WAS SET AT THE ORIGINAL DISTANCE (2640.00') FROM THE SOUTHEAST CORNER OF THE SECTION BECAUSE IT ACCURATELY FITS A DISTANCE OF 1 CHAIN TO THE LEFT BANK OF THE WISCONSIN RIVER AS INDICATED BY THE ORIGINAL NOTES.

2021 - PLS 2675 FOUND HARRISON (BROKEN-TOP) 6"± BELOW THE GROUND AND DID NOT RECOVER ANY EXISTING TIES OR WITNESSES. ACCEPTED THE HARRISON (BROKEN-TOP) AS THE CORNER LOCATION. SET 3 NEW TIES AND MEASURED TO THE FOUND MEANDER CORNER OF THE SE OF SEC. 19.



LOCATION

(INDICATE CORNER BY "X")

SEAL:

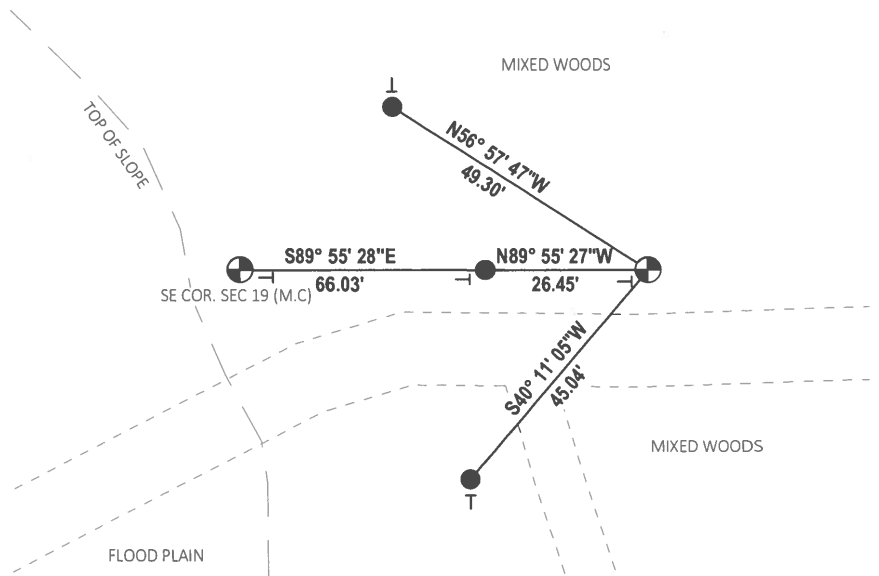
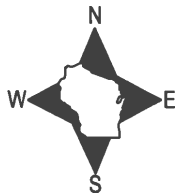


DATA SHOWN HERE ON THIS TIE SHEET IS CORRECT AND COMPLETE TO THE BEST OF MY KNOWLEDGE AND BELIEF.

PROFESSIONAL LAND SURVEYOR

DATE 3/3/2021

### TIE SKETCH



- SET 3/4" x 18" IRON REBAR, 1.50#/FT
- ⊕ FOUND HARRISON (BROKEN-TOP) MONUMENT
- VINYL "T" POST

# Government Land Corner Certificate

ADAMS County

TYPE OF MONUMENT: HARRISON

STATE PLANE COORDINATES: N \_\_\_\_\_  
E \_\_\_\_\_

ELEVATION — M.S.L. DATUM: \_\_\_\_\_

THETA ANGLE: \_\_\_\_\_

FIELD BOOK: 76 PAGE 34

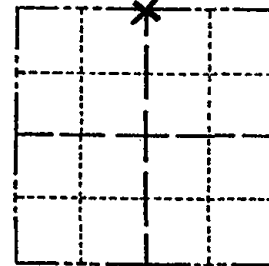
DRAWN BY: LANCE J. HABECK

CORNER NO. 84

SECTION 29

TOWN 16

RANGE 5



LOCATION  
(Indicated by 'X')

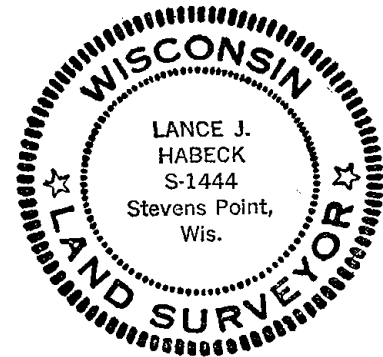
## BASIS FOR MONUMENT LOCATION

Show info such as: History of corner, with reference to Vol. and pg., dates, surveyor; exact description of monument replaced; if location computed, by taped or EDM traverse; landowner remarks, etc. (Use reverse side if necessary)

This corner was set on a straight line between the the NE corner and a 2" iron pipe found and accepted as being on the section line. The quarter corner was set at the original distance (2640.00') from the southeast corner of the section because it accurately fits a distance of 1 chain to the left bank of the Wisconsin River as indicated by the original notes.

ALL OK 4/15/85 D.K.  
ALL OK 2-8-90 KZ-SS  
" " 1-13-94 BS-SS  
ALL OK, 10-31-05 - JG  
TOP 1/2 BROKEN OFF - REMAINDER IN PLACE  
STEEL POST ADJ. TO EAST - 2 NEW TIES 11-09-10 SS

SEAL:



DATA SHOWN HERE ON  
CERTIFIED CORRECT:

*Lance J. Habeck*  
Registered Land Surveyor

DATE: 1/6/81

## TIE SKETCH

Show at least four ties, also fence lines, roads, topo, size and type of witness trees and if off road - best way to arrive at corner.

