

PUBLIC LAND SURVEY MONUMENT RECORD

TYPE OF MONUMENT: HARRISON
ADAMS COUNTY COORDINATES, NAD 83 (2007)

N. 172639.730

E. 504687.749

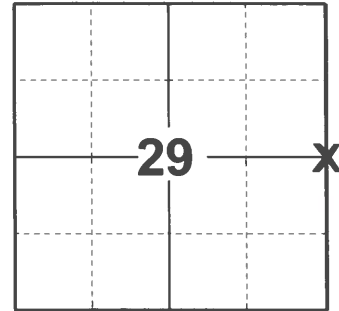
ELEVATION- _____ DATUM _____

FIELD WORK DATE: 02/18/2021

BASIS FOR MONUMENT LOCATION

1981 - PLS 1644 A 2" IRON PIPE WAS FOUND AT THIS LOCATION AND DETERMINED TO BE THE QUARTER CORNER BY EVALUATING SEVERAL SURVEYS DONE BY PERRY-CARRINGTON ENGINEERING. THE PIPE WAS REPLACED BY A HARRISON MONUMENT.

2021 - PLS 2675 FOUND HARRISON 4"± ABOVE THE GROUND, 1 TIE, AND 1 WITNESS. THE MONUMENT AGREES WITH THE TIE AND WITNESS. ACCEPTED THE HARRISON AS THE CORNER LOCATION. SET 4 NEW TIES AND MEASURED TO THE EXISTING TIE AND WITNESS.



LOCATION

(INDICATE CORNER BY "X")

SEAL:

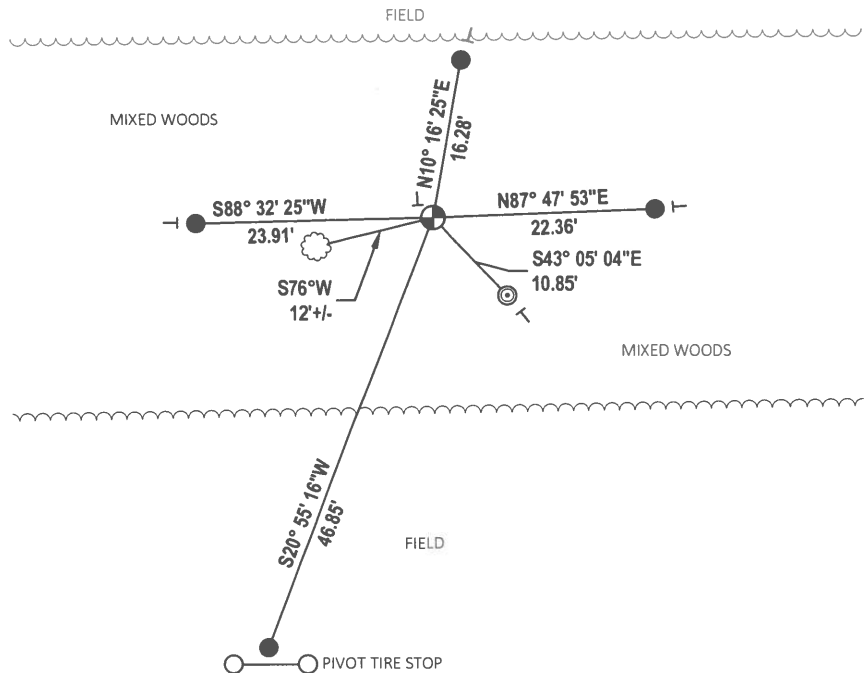
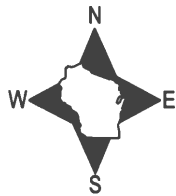


DATA SHOWN HERE ON THIS TIE SHEET IS CORRECT AND COMPLETE TO THE BEST OF MY KNOWLEDGE AND BELIEF.

PROFESSIONAL LAND SURVEYOR

DATE 3/3/2021

- TIE SKETCH -

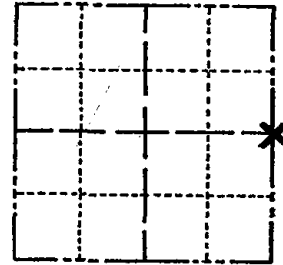


- SET 3/4" x 18" IRON REBAR, 1.50#/FT
- ◎ FOUND 2-3/8" O.D. IRON PIPE
- ⊙ FOUND HARRISON MONUMENT
- VINYL "T" POST
- ⊗ WITNESS TREE

Government Land Corner Certificate

ADAMS County
 TYPE OF MONUMENT: HARRISON
 STATE PLANE COORDINATES: N _____
 E _____
 ELEVATION — M.S.L. DATUM: _____
 THETA ANGLE: _____
 FIELD BOOK: 76 PAGE 35
 DRAWN BY: LANCE J. HABECK

CORNER NO. 96
 SECTION 29
 TOWN 16
 RANGE 5



LOCATION
(Indicated by 'X')

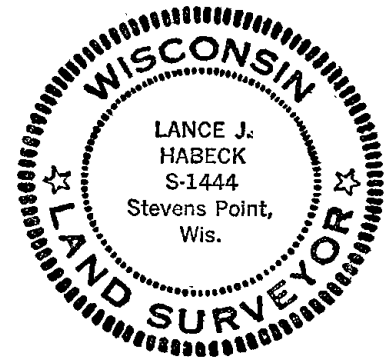
BASIS FOR MONUMENT LOCATION

Show info such as: History of corner, with reference to Vol. and pg., dates, surveyor; exact description of monument replaced; if location computed, by taped or EDM traverse; landowner remarks, etc. (Use reverse side if necessary)

A 2" iron pipe was found at this location and determined to be the quarter corner by evaluating several surveys done by Perry-Carrington Eng. The pipe replaced with a Harrison monument.

ALL OK 4/15/85 D.K.
 ALL OK 3-23-90 KZ-SS
 ALL OK 1-13-95 SS-BS
 1 NEW TIE 12-07-00 STS
 ALL OK, 10-31-05-JG

SEAL:



DATA SHOWN HERE ON
CERTIFIED CORRECT:

Lance J. Habeck
Registered Land Surveyor

DATE: 1/6/81

TIE SKETCH

Show at least four ties, also fence lines, roads, topo, size and type of witness trees' and if off road - best way to arrive at corner.

