

25
SECTION

16
TOWN

05
RANGE

ADAMS COUNTY

COUNTY CORNER NO: 112

ROMPORTOL ID: 41605250020

PUBLIC LAND SURVEY MONUMENT RECORD

TYPE OF MONUMENT: HARRISON
ADAMS COUNTY COORDINATES, NAD 83 (2007)

N. 170024.604

E. 523226.593

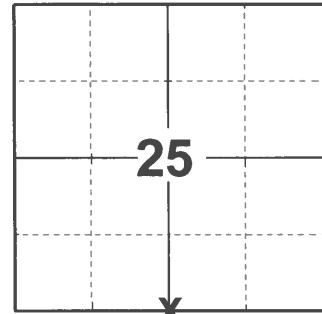
ELEVATION- - - - DATUM - - - -

FIELD WORK DATE: 02/15/2021

BASIS FOR MONUMENT LOCATION

1982 - PLS 1644 EXCAVATED WITH BACKHOE, FOUND 7"X7"X21" PERFECTLY SQUARE SANDSTONE. LOWERED STONE AND SET HARRISON ON TOP.

2021 - PLS 2675 FOUND HARRISON 3"± BELOW THE GROUND, 1 TIE, AND 1 WITNESS. THE MONUMENT AGREES WITH THE EXISTING TIE AND WITNESS. ACCEPTED THE HARRISON AS THE CORNER LOCATION. SET 3 NEW TIES AND MEASURED TO THE EXISTING TIE AND WITNESS.



LOCATION

(INDICATE CORNER BY "X")

SEAL:

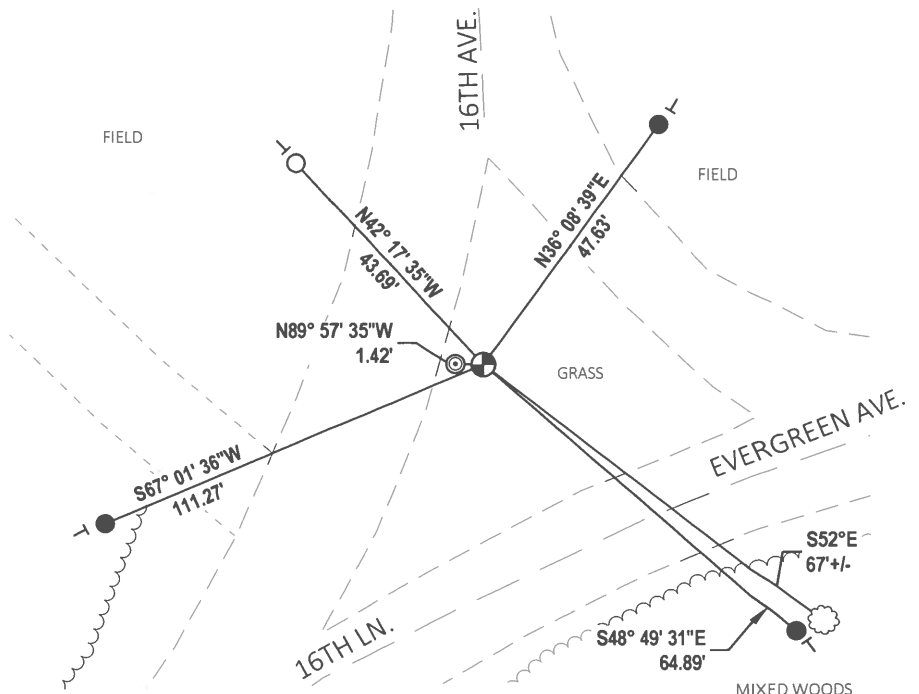
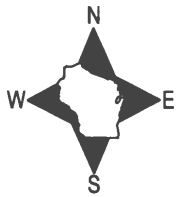


DATA SHOWN HERE ON THIS TIE SHEET IS CORRECT AND COMPLETE TO THE BEST OF MY KNOWLEDGE AND BELIEF.

PROFESSIONAL LAND SURVEYOR

DATE 3/3/2021

TIE SKETCH

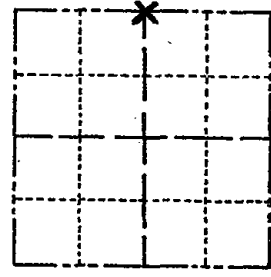


- SET 3/4" x 18" IRON REBAR, 1.50#/FT
- FOUND 3/4" IRON ROD
- ⊕ FOUND HARRISON MONUMENT
- ┆ VINYL "T" POST
- ⊗ WITNESS TREE

Government Land Corner Certificate

ADAMS County
 TYPE OF MONUMENT: HARRISON
 STATE PLANE COORDINATES: N _____
 E _____
 ELEVATION — M.S.L. DATUM: _____
 THETA ANGLE: _____
 FIELD BOOK: 92 PAGE 47
 DRAWN BY: LANCE HABECK

CORNER NO. 112
 SECTION 36
 TOWN 16
 RANGE 5



LOCATION
(Indicated by 'X')

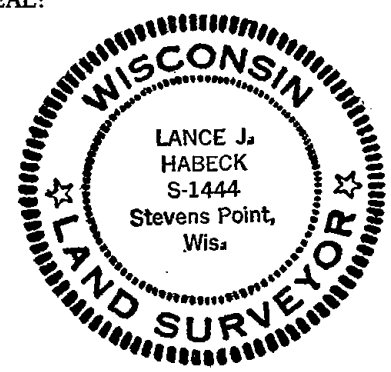
BASIS FOR MONUMENT LOCATION

Show info such as: History of corner, with reference to Vol. and pg., dates, surveyor; exact description of monument replaced; if location computed, by taped or EDM traverse; landowner remarks, etc. (Use reverse side if necessary)

Excavated with backhoe, found 7"x7"x21" perfectly square sandstone. Lowered stone and set Harrison on top.

ALL OK 2/14/85 GR-SS

SEAL:



DATA SHOWN HERE ON
CERTIFIED CORRECT:

Lance J. Habeck
Registered Land Surveyor

DATE: 5/3/82

TIE SKETCH

Show at least four ties, also fence lines, roads, topo, size and type of witness trees and if off road - best way to arrive at corner.

