

# Government Land Corner Certificate

**ADAMS** County

TYPE OF MONUMENT: Harrison Standard (Section)

STATE PLANE COORDINATES: N \_\_\_\_\_  
E \_\_\_\_\_

ELEVATION — M.S.L. DATUM: \_\_\_\_\_

THETA ANGLE: \_\_\_\_\_

FIELD BOOK: 5 PAGE 65

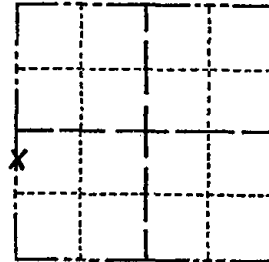
DRAWN BY: S. Sorensen

CORNER NO. 134

SECTION 20

TOWN 16

RANGE 5



LOCATION  
(Indicated by 'X')

SEAL:



DATA SHOWN HERE ON  
CERTIFIED CORRECT:

*Gregory P. Rhinehart*  
Registered Land Surveyor

DATE: Nov 1, 1982

## BASIS FOR MONUMENT LOCATION

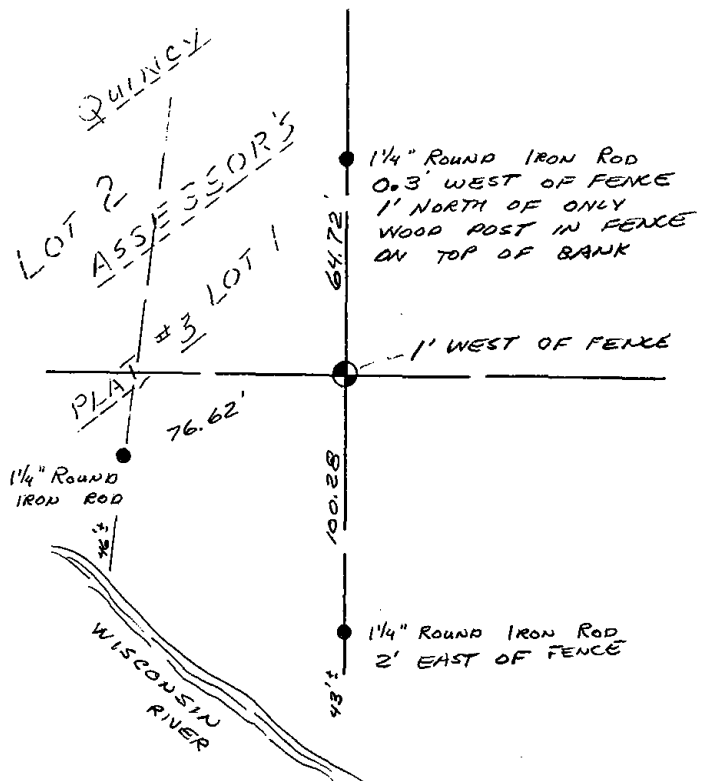
Show info such as: History of corner, with reference to Vol. and pg., dates, surveyor; exact description of monument replaced; if location computed, by taped or EDM traverse; landowner remarks, etc. (Use reverse side if necessary)

NOTE: This is the first meander corner south of the West Quarter corner of Section 20-16-5.

Set monument at record distance from the West Quarter corner and on the east line of Quincy Assessor's Plat #3. This location fits the river well.

## TIE SKETCH

Show at least four ties, also fence lines, roads, topo, size and type of witness trees' and if off road - best way to arrive at corner.



## MAINTENANCE RECORD

Date	Init.	Remarks
11-5-85	S.S.	ALL O.K.
2-8-90	WZ-SS	OK
1-13-95	SS-BS	OK
3-4-05	JS-SS	"
12-20-10	SS	"