

13  
SECTION

16  
TOWN

06  
RANGE

# ADAMS COUNTY

COUNTY CORNER NO: 60

ROMPORTOL ID: 41606132000

## PUBLIC LAND SURVEY MONUMENT RECORD

TYPE OF MONUMENT: HARRISON  
ADAMS COUNTY COORDINATES, NAD 83 (2007)

N. 183146.363

E. 557652.915

ELEVATION- \_\_\_\_\_ DATUM \_\_\_\_\_

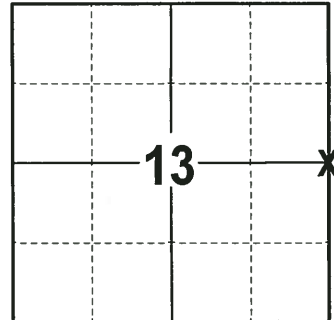
FIELD WORK DATE: 11/20/2017

### BASIS FOR MONUMENT LOCATION

1974 - PLS 878 SET ON A STRAIGHT LINE BETWEEN SECTION CORNERS, 2634.45' TO THE CORNER TO THE SOUTH AND 2667.25' TO THE CORNER TO THE NORTH. M.C. SMITH RAN SEVERAL MILES OF THIS RANGE LINE IN 1919. SECTION 13 POSSESSION LINES SEEM TO INDICATE. MR. SMITH IMPROPERLY ESTABLISHED SEVERAL CORNERS ON THE RANGE LINE, HOWEVER, I HAVE ACCEPTED HIS CORNERS AT THIS POINT IN TIME, EXCAVATED WITH A BACKHOE AND FOUND NOTHING. SET A HARRISON MONUMENT AT THE CORNER LOCATION AND TIED OUT.

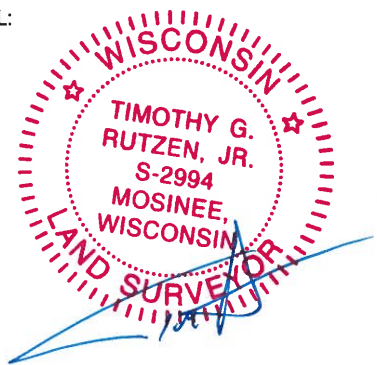
1999 - PLS 1397 EXISTING MONUMENT WAS FOUND AT THE CORNER LOCATION. MONUMENT WAS REMOVED AND RAISED DUE TO RECONSTRUCTION OF C.T.H. B AND RE-TIED.

2017 - PLS 2994 FOUND A HARRISON MONUMENT 4" BELOW THE ROAD SURFACE. FOUND NO EVIDENCE OF ANY TIES OR WITNESSES. ACCEPTED THE HARRISON MONUMENT AS THE CORNER LOCATION. SET 4 NEW TIES AND MEASURED TO THE TIES.



**LOCATION**  
(INDICATE CORNER BY "X")

SEAL:



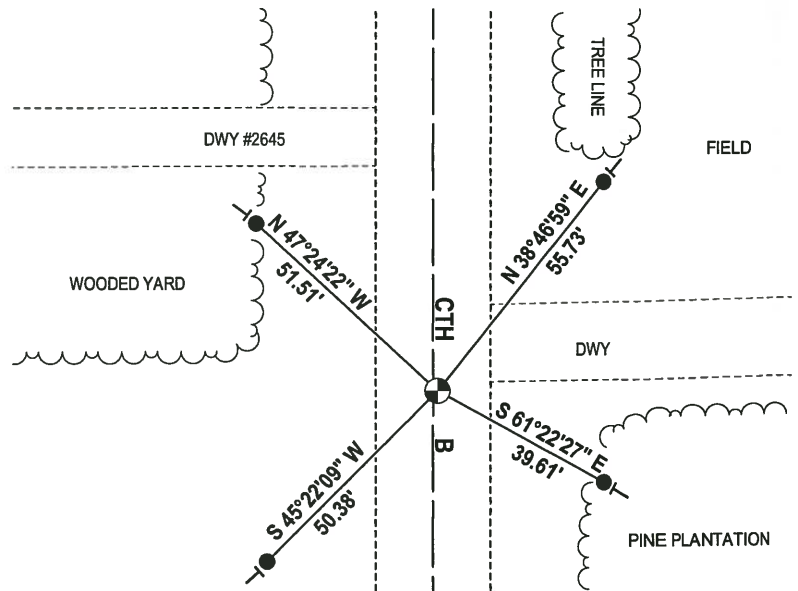
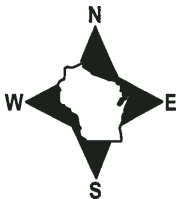
DATA SHOWN HERE ON THIS TIE SHEET IS CORRECT AND COMPLETE TO THE BEST OF MY KNOWLEDGE AND BELIEF.

PROFESSIONAL LAND SURVEYOR

DATE 12-21-17

### - TIE SKETCH

NOTE: THE CORNER FALLS 1 1/2' EAST OF THE CENTERLINE OF CTH B.



- 3/4" x 18" IRON REBAR SET, 1.50#/FT
- ⊕ HARRISON FOUND
- VINYL "T" POST

**ADAMS COUNTY**

**Survey Monument Record**

TYPE OF MONUMENT: Harrison Standard

STATE PLANE COORDINATES: N \_\_\_\_\_

E \_\_\_\_\_

ELEVATION — M.S.L. DATUM: \_\_\_\_\_

THETA ANGLE: \_\_\_\_\_

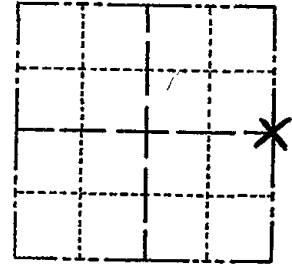
FIELD BOOK: \_\_\_\_\_ PAGE \_\_\_\_\_

CORNER NO. 385 60

SECTION 13

TOWN 16

RANGE 6



LOCATION  
(Indicated by 'X')

SEAL:

**BASIS FOR MONUMENT LOCATION**

(Use reverse side if necessary)

Show info such as: History of corner, with reference to Vol. and pg, dates, surveyor; exact description of monument replaced; if location computed, by taped or EDM traverse; landowner remarks, etc.

Set on a straight line between section corners, 2634.45' to corner to south, and 2667.25' to corner to north. M.C. Smith ran several miles of this range line in 1919. His note indicate that the east line of the south half of Sec. 12 is long by 47 lks, however the east line of 12 measures very nearly 522' and possession lines fit that well. Therefore it is my conclusion Mr. Smith's note should be to show the north half of Section 13 as being long, since that is what sec. 13 possession lines seem to indicate. Mr. Smith improperly established the several corners on the range line, however, I have accepted his corners at this point in time.  
Excavated with backhoe-found nothing.



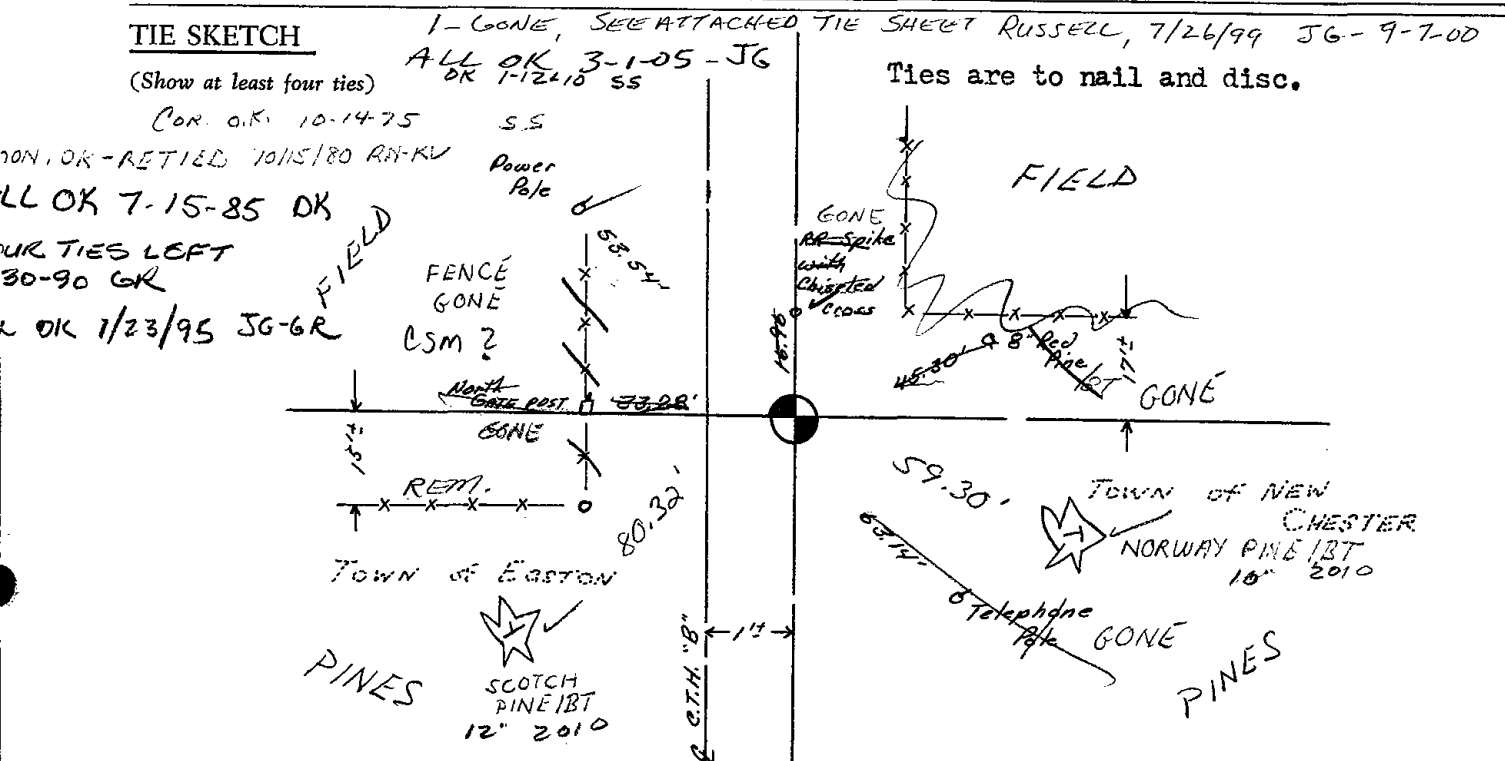
CERTIFIED CORRECT:

*Anthony B. Kiedrowski*  
Registered Land Surveyor

DATE: 6/12/74

**TIE SKETCH**

(Show at least four ties)



# ADAMS COUNTY

## Survey Monument Record

TYPE OF MONUMENT: 30" HARRISON MARKER

STATE PLANE COORDINATES: N \_\_\_\_\_

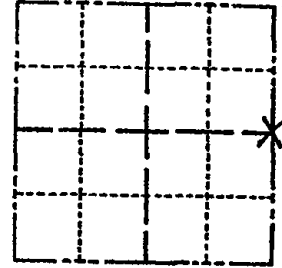
E \_\_\_\_\_

ELEVATION — M.S.L. DATUM: \_\_\_\_\_

THETA ANGLE: \_\_\_\_\_

FIELD BOOK: \_\_\_\_\_ PAGE \_\_\_\_\_

CORNER NO.	<u>385</u>
SECTION	<u>13</u>
TOWN	<u>16N</u>
RANGE	<u>6E</u>



LOCATION  
(Indicated by 'X')

SEAL:

### BASIS FOR MONUMENT LOCATION

(Use reverse side if necessary)

Show info such as: History of corner, with reference to Vol. and pg. dates, surveyor; exact description of monument replaced; if location computed, by taped or EDM traverse; landowner remarks, etc.

Existing Monument was found in place. Monument was removed and raised due to reconstruction of C.T.H. "B". All tie measurements are horizontal measurements unless noted otherwise.



CERTIFIED CORRECT:

*Dennis J. Russell*  
Registered Land Surveyor

DATE: July 26, 1999

### TIE SKETCH

(Show at least four ties)

ALL MEASUREMENTS ARE HORIZONTAL.

