

24
SECTION

16
TOWN

05
RANGE

ADAMS COUNTY

COUNTY CORNER NO: 80

ROMPORTOL ID: 41605242000

PUBLIC LAND SURVEY MONUMENT RECORD

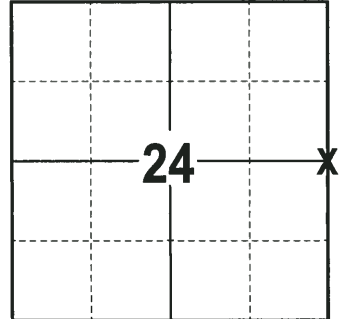
TYPE OF MONUMENT: HARRISON (BROKEN-TOP)
ADAMS COUNTY COORDINATES, NAD 83 (2007)

N. 177923.901

E. 525890.529

ELEVATION- - - DATUM - -

FIELD WORK DATE: 11/02/2017



LOCATION
(INDICATE CORNER BY "X")

SEAL:

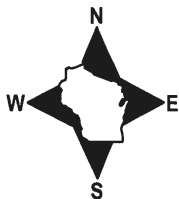


DATA SHOWN HERE ON THIS TIE SHEET IS CORRECT AND COMPLETE TO THE BEST OF MY KNOWLEDGE AND BELIEF.

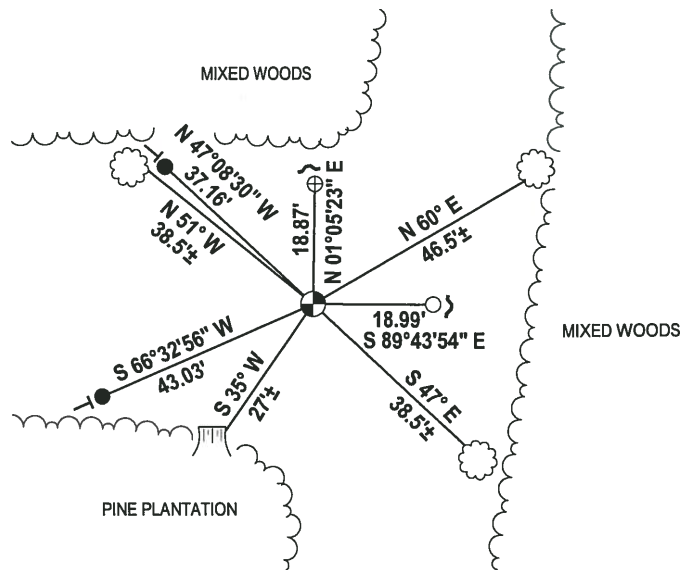
PROFESSIONAL LAND SURVEYOR

DATE 11-15-17

- TIE SKETCH -



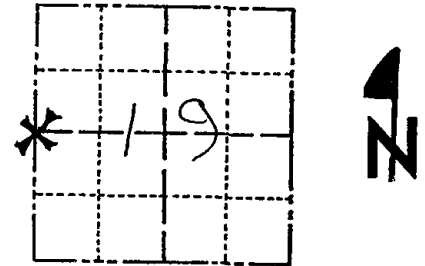
- 3/4" x 18" IRON REBAR SET, 1.50#/FT
- 3/4" IRON ROD FOUND
- ⊕ 1-1/4" IRON ROD FOUND
- ⊙ HARRISON (BROKEN-TOP) FOUND
- ~ STEEL FENCE POST
- └ VINYL "T" POST
- ▤ WITNESS TREE STUMP FOUND
- ☼ WITNESS TREE FOUND



Government Land Corner Certificate

ADAMS County
 TYPE OF MONUMENT: HARRISON
 STATE PLANE COORDINATES: N _____
 E _____
 ELEVATION — M.S.L. DATUM: _____
 THETA ANGLE: _____
 FIELD BOOK: 38 PAGE 43
 DRAWN BY: D.C. HAGEN

CORNER NO. 74
 SECTION 19
 TOWN 16 N
 RANGE 6 E



LOCATION
 (Indicated by 'X')

BASIS FOR MONUMENT LOCATION

Show info such as: History of corner, with reference to Vol. and pg., dates, surveyor; exact description of monument replaced; if location computed, by taped or EDM traverse; landowner remarks, etc. (Use reverse side if necessary)

Ran EDM/T2 traverse around Sections 19 and 30, using the coordinates for the Northwest corner of Section 19 as supplied by Arnold and O'Sheridan, Inc., to determine the search areas.

Investigation yielded no evidence of the original corner or any accessories.

Relocated corner by single proportionate measure on line between the Northwest and Southwest corners of Section 19.

Harrison Set 5-19-77.

SEAL:



DATA SHOWN HERE ON
 CERTIFIED CORRECT:

Dale C. Hagen
 Registered Land Surveyor

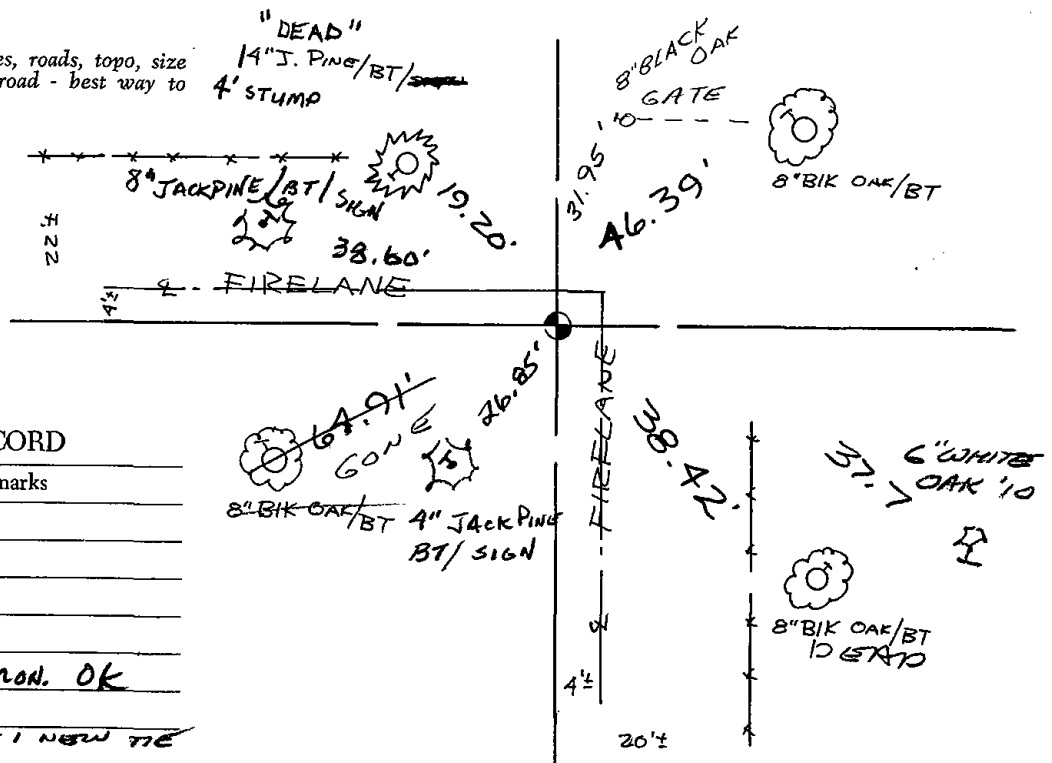
DATE: 5-23-77

TIE SKETCH

Show at least four ties, also fence lines, roads, topo, size and type of witness trees and if off road - best way to arrive at corner.

NOTE

Ties in trees to nail in disc.



MAINTENANCE RECORD

Date	Init.	Remarks
10/20/80	KV SK	COR OK
11-4-85	GR	1 NEW
1-15-90	GR	OK
2-6-95	JG-GR	"
5-17-00	JG	2-NEW, MON. OK
2-28-05	JG	OK
1-15-10	SS	TOP BROKEN - 1 NEW TIE