

## PUBLIC LAND SURVEY MONUMENT RECORD

TYPE OF MONUMENT: HARRISON  
 ADAMS COUNTY COORDINATES, NAD 83 (2007)

N. 177876.804  
 E. 536533.907

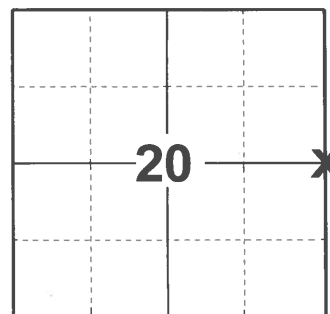
ELEVATION: \_\_\_\_\_ DATUM: \_\_\_\_\_

FIELD WORK DATE: 11/16/2020

### BASIS FOR MONUMENT LOCATION

1982 - PLS 1444 THIS CORNER WAS SET EQUIDISTANT AND ON LINE BETWEEN SECTION CORNERS. NO EVIDENCE OF THE ORIGINAL CORNER OR ANY RESURVEY CORNER WAS FOUND.

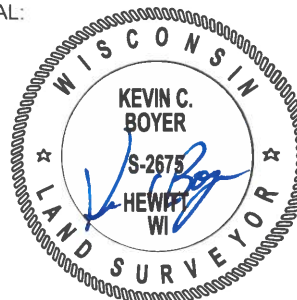
2020 - PLS 2675 FOUND HARRISON FLUSH WITH THE GROUND AND DID NOT RECOVER ANY EXISTING TIES OR WITNESSES. CORNER WAS VERIFIED BY CHECKING THAT IT IS ON A NEAR STRAIGHT LINE AND EQUIDISTANT SPLIT BETWEEN THE NE AND SE CORNERS OF SECTION 20. ACCEPTED THE HARRISON AS THE CORNER LOCATION AND SET 4 NEW TIES.



**LOCATION**

(INDICATE CORNER BY "X")

SEAL:

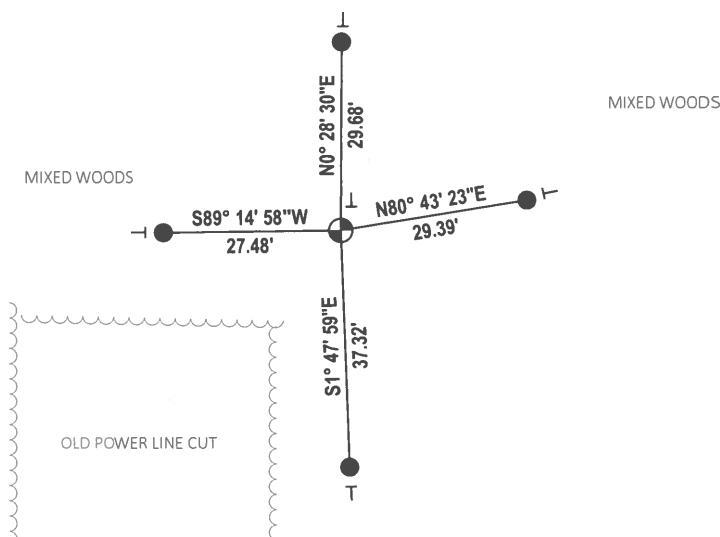
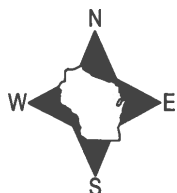


DATA SHOWN HERE ON THIS TIE SHEET IS CORRECT AND COMPLETE TO THE BEST OF MY KNOWLEDGE AND BELIEF.

PROFESSIONAL LAND SURVEYOR

DATE 12/3/2020

### - TIE SKETCH

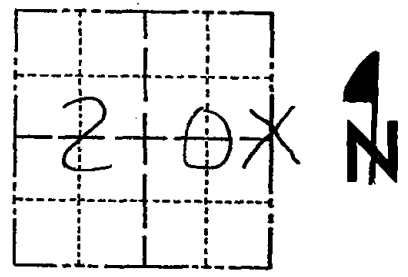


- SET 3/4" x 18" IRON REBAR, 1.50#/FT
- ⊕ FOUND HARRISON MONUMENT
- VINYL "T" POST

# Government Land Corner Certificate

ADAMS County  
 TYPE OF MONUMENT: HARRISON  
 STATE PLANE COORDINATES: N \_\_\_\_\_  
 E \_\_\_\_\_  
 ELEVATION — M.S.L. DATUM: \_\_\_\_\_  
 THETA ANGLE: \_\_\_\_\_  
 FIELD BOOK: 92 PAGE 121  
 DRAWN BY: SSH.

CORNER NO. 76  
 SECTION 20  
 TOWN 16  
 RANGE 6



LOCATION  
(Indicated by 'X')

## BASIS FOR MONUMENT LOCATION

Show info such as: History of corner, with reference to Vol. and pg., dates, surveyor; exact description of monument replaced; if location computed, by taped or EDM traverse; landowner remarks, etc. (Use reverse side if necessary)

This corner was set equidistant and on line between section corners. No evidence of the original corner or any resurvey corner was found.

- OK 1-30-90 GR.
- 1-GONE, 1-NEW, MON. OK 5-17-00 -JG
- ALL OK 2-25-05 -JG
- " " 3-22-10 SS

SEAL:



DATA SHOWN HERE ON  
CERTIFIED CORRECT:

*Lance J. Habeck*  
Registered Land Surveyor

DATE: 9/29/82

## TIE SKETCH

Show at least four ties, also fence lines, roads, topo, size and type of witness trees and if off road - best way to arrive at corner.

