

## PUBLIC LAND SURVEY MONUMENT RECORD

TYPE OF MONUMENT: HARRISON  
 ADAMS COUNTY COORDINATES, NAD 83 (2007)

N. 177844.186

E. 552357.383

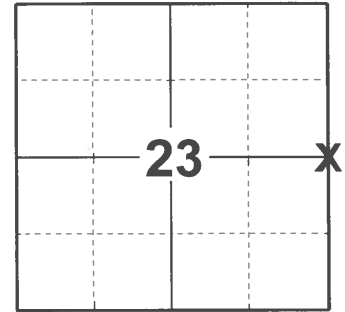
ELEVATION: \_\_\_\_\_ DATUM \_\_\_\_\_

FIELD WORK DATE: 10/30/2020

### BASIS FOR MONUMENT LOCATION

1979 - PLS 1321 RAN EDM/T16 TRAVERSE OF SECTION 23, T16N, R6E. COULD NOT FIND ANY EVIDENCE OF MONUMENTATION OR RE-SURVEYS. SET CORNER ON LINE EQUIDISTANT BETWEEN SECTION CORNERS. SET HARRISON JULY 17, 1979.

2020 - PLS 2675 FOUND HARRISON 3'± BELOW THE ROAD SURFACE AND 2 WITNESSES. THE MONUMENT AGREES WITH BOTH WITNESSES. ACCEPTED THE HARRISON AS THE CORNER LOCATION. SET 4 NEW TIES AND MEASURED TO THE EXISTING WITNESSES.



LOCATION

(INDICATE CORNER BY "X")

SEAL:



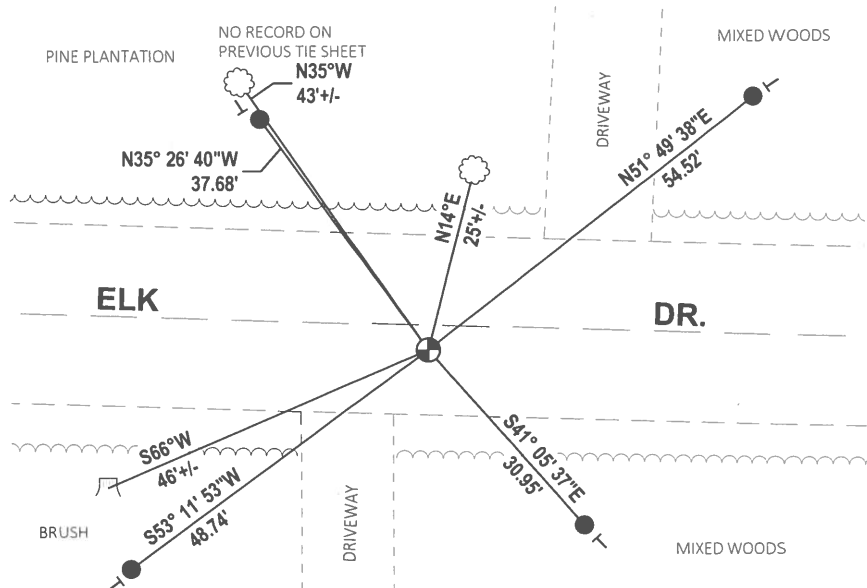
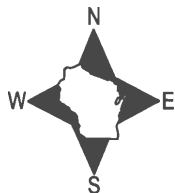
DATA SHOWN HERE ON THIS TIE SHEET IS CORRECT AND COMPLETE TO THE BEST OF MY KNOWLEDGE AND BELIEF.

PROFESSIONAL LAND SURVEYOR

DATE 12/3/2020

### TIE SKETCH

NOTE: THE CORNER LANDS 3'± SOUTH OF ELK DR. CENTERLINE.

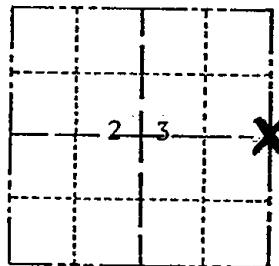


- SET 3/4" x 18" IRON REBAR, 1.50#/FT
- ⊕ FOUND HARRISON MONUMENT
- ┆ VINYL "T" POST
- ☼ WITNESS TREE
- ┆ WITNESS STUMP

# Government Land Corner Certificate

Adams County  
 TYPE OF MONUMENT: 30" Harrison  
 STATE PLANE COORDINATES: N \_\_\_\_\_  
 E \_\_\_\_\_  
 ELEVATION — M.S.L. DATUM: \_\_\_\_\_  
 THETA ANGLE: \_\_\_\_\_  
 FIELD BOOK: \_\_\_\_\_ PAGE \_\_\_\_\_  
 DRAWN BY: \_\_\_\_\_

CORNER NO. 79  
 SECTION 23  
 TOWN 16  
 RANGE 6

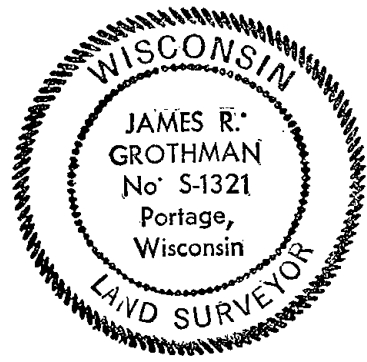


LOCATION  
(Indicated by 'X')

## BASIS FOR MONUMENT LOCATION

Show info such as: History of corner, with reference to Vol. and pg., dates, surveyor; exact description of monument replaced; if location computed, by taped or EDM traverse; landowner remarks, etc. (Use reverse side if necessary)

SEAL:



DATA SHOWN HERE ON  
CERTIFIED CORRECT:

*James R. Grothman*  
 Registered Land Surveyor  
 DATE: 7/19/79

Ran EDM/T16 traverse of Section 23, T16N, R6E.

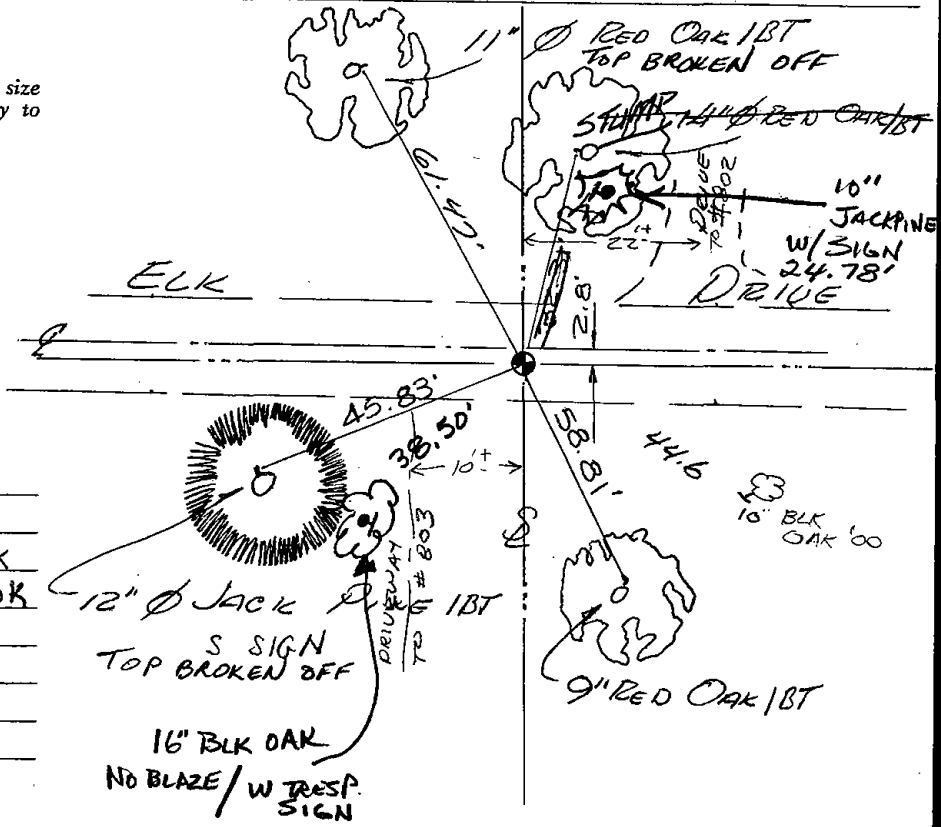
Could not find any evidence of monumentation or re-surveys of record. Set corner on line equidistant between section corners.

Set Harrison July 17, 1979

## TIE SKETCH

Show at least four ties, also fence lines, roads, topo, size and type of witness trees and if off road - best way to arrive at corner.

Note: All ties to trees are to PK nails



## MAINTENANCE RECORD

Date	Init.	Remarks
10/15/80	KV-RN	MON. BEEPS TIES OK
7-15-85	DK	MON Beeps ties OK
1-30-90	GR	OK
1-23-95	JG-GR	OK
2-21-00	SS	1 NEW TIE
1-19-05	JG-DA	2-NEW TIES
1-15-10	SS	OK

