

20
SECTION

16
TOWN

06
RANGE

ADAMS COUNTY

COUNTY CORNER NO: 85

ROMPORTOL ID: 4160620000

PUBLIC LAND SURVEY MONUMENT RECORD

TYPE OF MONUMENT: HARRISON
ADAMS COUNTY COORDINATES, NAD 83 (2007)

N. 175243.727

E. 536529.015

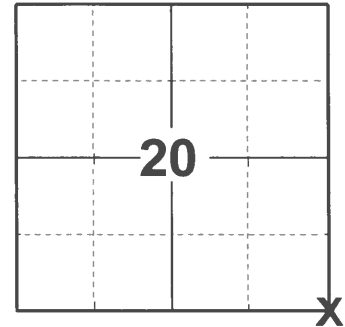
ELEVATION: DATUM

FIELD WORK DATE: 11/04/2020

BASIS FOR MONUMENT LOCATION

1975 - PLS 878 EXCAVATED WITH BACKHOE. FOUND UNMISTAKABLE STAIN FROM ORIGINAL POST, 3" DIAMETER, TURNING SQUARE AND COMING TO A POINT. SOIL WITHIN STAIN SOFT. REPLACED STAIN WITH HARRISON. COULD NOT ACCOUNT FOR RAILROAD SPIKE FOUND 2.15' NORTH OF CORNER.

2020 - PLS 2675 FOUND HARRISON FLUSH WITH THE ROAD SURFACE, 2 TIES, AND 1 WITNESS. THE MONUMENT AGREES WITH THE TIES AND WITNESS. ACCEPTED THE HARRISON AS THE CORNER LOCATION. SET 3 NEW TIES, MEASURED TO A FOUND PROPERTY IRON AND THE EXISTING TIES AND WITNESS.



LOCATION

(INDICATE CORNER BY "X")

SEAL:



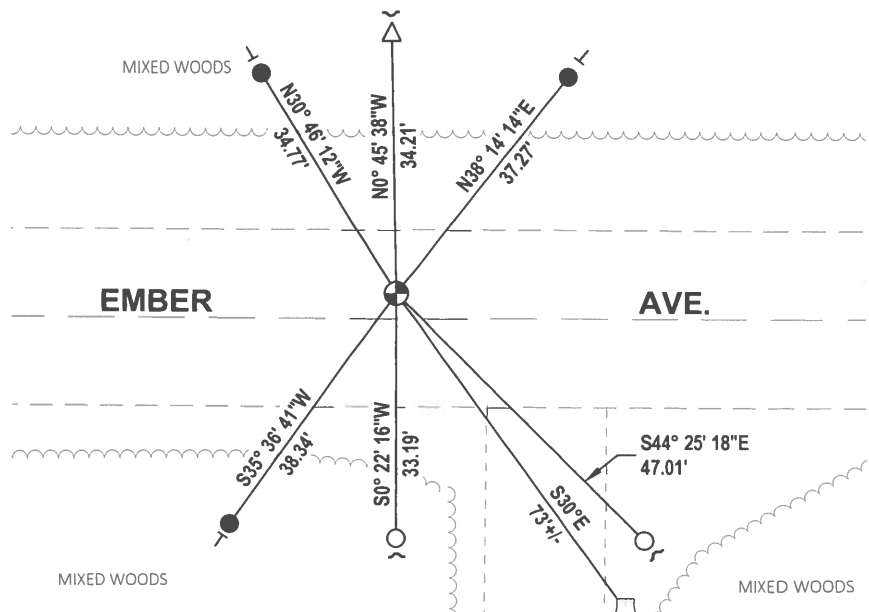
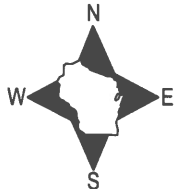
DATA SHOWN HERE ON THIS TIE SHEET IS CORRECT AND COMPLETE TO THE BEST OF MY KNOWLEDGE AND BELIEF.

PROFESSIONAL LAND SURVEYOR

DATE 12/3/2020

- TIE SKETCH

NOTE: THE CORNER LANDS 3± NORTH OF EMBER AVE. CENTERLINE.



- SET 3/4" x 18" IRON REBAR, 1.50#/FT
- FOUND 3/4" IRON ROD
- △ FOUND GROUNDING ROD
- ⊕ FOUND HARRISON MONUMENT
- ✓ STEEL FENCE POST
- ┆ VINYL "T" POST
- WITNESS STUMP

ADAMS COUNTY

Survey Monument Record

TYPE OF MONUMENT: HARRISON STANDARD 30 inches

STATE PLANE COORDINATES: N _____

E _____

ELEVATION — M.S.L. DATUM: _____

THETA ANGLE: _____

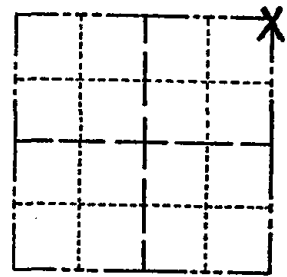
FIELD BOOK: _____ PAGE _____

CORNER NO. 646

SECTION 29

TOWN 16

RANGE 6



LOCATION
(Indicated by 'X')

SEAL:



BASIS FOR MONUMENT LOCATION

(Use reverse side if necessary)

Show info such as: History of corner, with reference to Vol. and pg, dates, surveyor; exact description of monument replaced; if location computed, by taped or EDM traverse; landowner remarks, etc.

Excavated with backhoe. Found unmistakable stain from original post, 3" dia, turning square and coming to a point. Soil within stain soft. Replaced stain with Harrison. Could not account for railroad spike found 2.15' north of corner.

(A.K. & Rod Knoll)

CERTIFIED CORRECT:

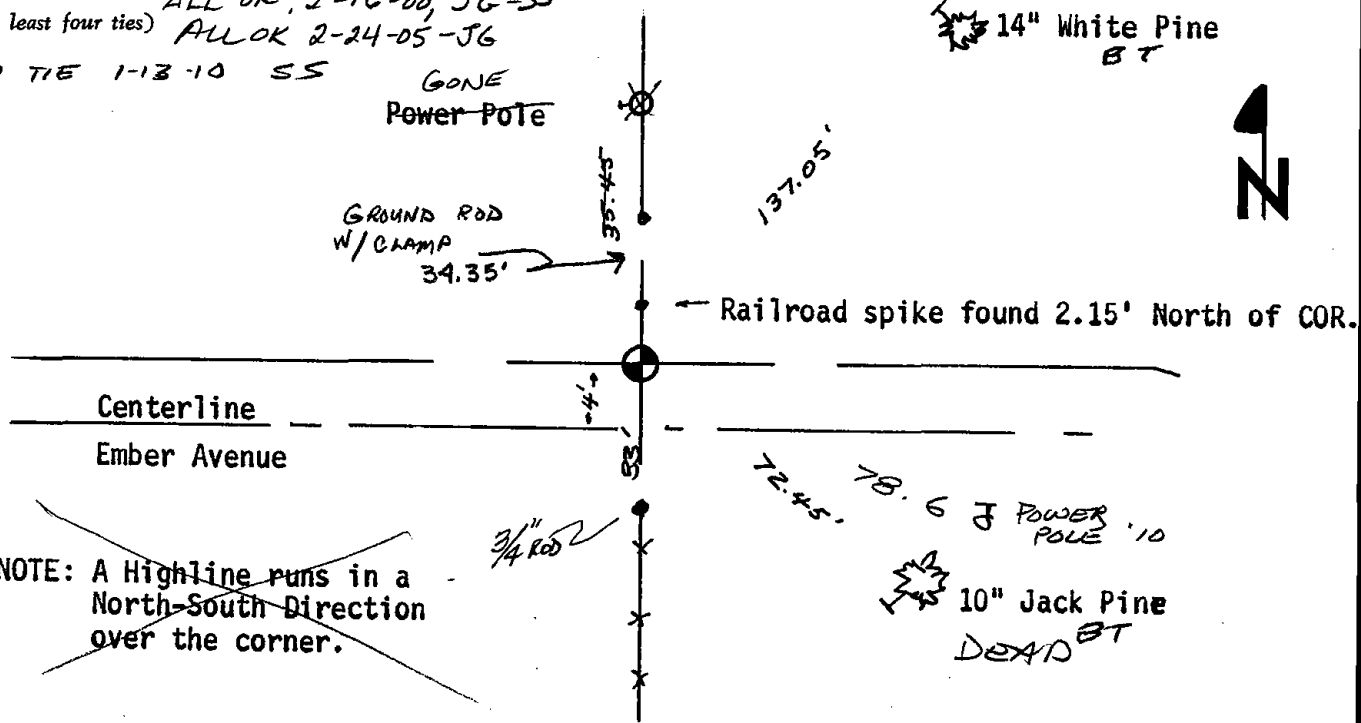
Anthony B. Kiedrowski
Registered Land Surveyor

DATE: April 22, 1975

Cor OK 10/10/80 KURN
ALL OK 6-26-85 SS-GR
ALL OK 1-30-90 GR

TIE SKETCH 1-GONE, 1-NEW 1/24/95 JG-CR

(Show at least four ties) ALL OK, 2-16-00, JG-SS
ALL OK 2-24-05-JG
1 NEW TIE 1-13-10 SS



~~NOTE: A Highline runs in a North-South Direction over the corner.~~