

23
SECTION

16
TOWN

06
RANGE

ADAMS COUNTY

COUNTY CORNER NO: 91

ROMPORTOL ID: 41606230000

PUBLIC LAND SURVEY MONUMENT RECORD

TYPE OF MONUMENT: HARRISON

ADAMS COUNTY COORDINATES, NAD 83 (2007)

N. 175197.525

E. 552358.290

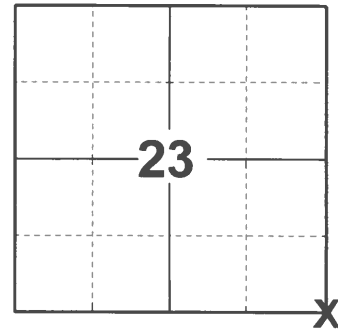
ELEVATION- DATUM

FIELD WORK DATE: 11/16/2020

BASIS FOR MONUMENT LOCATION

1979 - PLS 1321 RAN EDM/T16 TRAVERSE OF SECTION 23, T16N, R6E. COULD NOT FIND ROD SET BY DAVID CLARK, SET FOR PLAT OF DEER LOOKOUT (1970) THEREFORE, PROCEEDED TO COMPUTE BACK TO RE-ESTABLISH THE SE CORNER AS PER THE PLAT'S TIES. ALSO REVIEWED THE LOCATION OF THE CORNER WITH CLIFF MORGAN, A LONG-TIME RESIDENT OF THE AREA. HE MENTIONED HE COULD REMEMBER A BEARING TREE BEING NEAR THE CORNER. VISITED THE LOCATION TOGETHER AND COULD NOT FIND THIS BEARING TREE. HE ALSO THOUGHT THE CORNER WAS NEAR OR AT THE FENCE LINE INTERSECTION THAT NOW EXISTED. MONUMENTED THIS FENCE LINE INTERSECTION JULY 11, 1979.

2020 - PLS 2675 FOUND HARRISON FLUSH WITH THE GROUND AND DID NOT RECOVER ANY EXISTING TIES OR WITNESSES. THE CORNER AGREES WITH THE SECTION DISTANCES BETWEEN THE E1/4 OF SECTION 23 AND THE S1/4 OF SECTION 24. ACCEPTED THE HARRISON AS THE BEST AVAILABLE EVIDENCE OF THE CORNER LOCATION AND SET 4 NEW TIES.



LOCATION

(INDICATE CORNER BY "X")

SEAL:



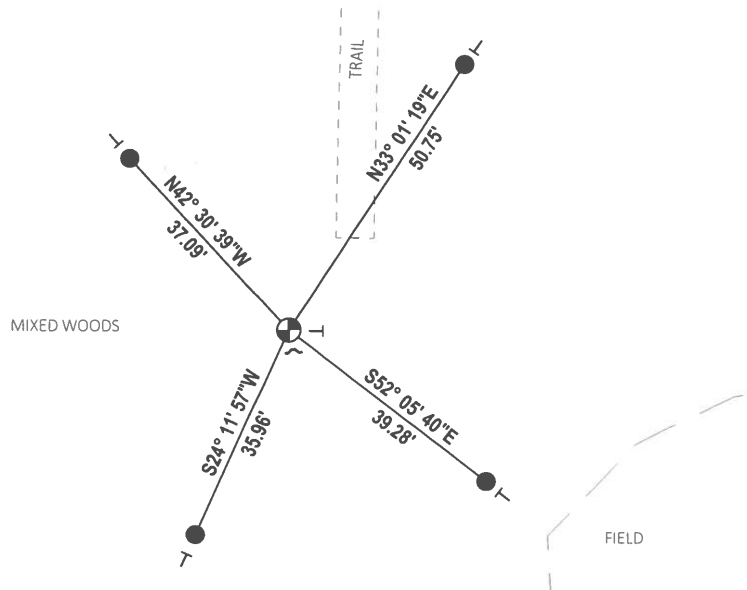
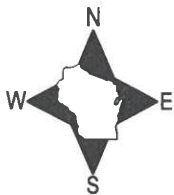
DATA SHOWN HERE ON THIS TIE SHEET IS CORRECT AND COMPLETE TO THE BEST OF MY KNOWLEDGE AND BELIEF.

PROFESSIONAL LAND SURVEYOR

DATE 12/3/2020

- TIE SKETCH

NOTE: THE CORNER LANDS 18± OFF THE TRAIL.



- SET 3/4" x 18" IRON REBAR, 1.50#/FT
- ⊕ FOUND HARRISON MONUMENT
- ┘ STEEL FENCE POST
- └ VINYL "T" POST

Government Land Corner Certificate

Adams County

TYPE OF MONUMENT: 30" Harrison

STATE PLANE COORDINATES: N _____

E _____

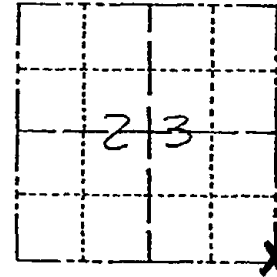
ELEVATION — M.S.L. DATUM: _____

THETA ANGLE: _____

FIELD BOOK: _____ PAGE _____

DRAWN BY: _____

CORNER NO. 91
SECTION 23
TOWN 16
RANGE 6



LOCATION
(Indicated by 'X')

SEAL:



BASIS FOR MONUMENT LOCATION

Show info such as: History of corner, with reference to Vol. and pg., dates, surveyor; exact description of monument replaced; if location computed, by taped or EDM traverse; landowner remarks, etc. (Use reverse side if necessary)

Ran EDM/T16 traverse of Section 23, T16N, R6E.

Could not find rod set by David Clark, set for Plat of Deer Lookout (1970). Therefore, I proceeded to compute back to re-establish the SE corner as per this plat's tie.

ENTER TRAIL @ N.E. CORNER
SEGER PROP. NEAR C/4 24-16-6
FOLLOW MAIN TRAIL SOUTH
WESTERLY TO CORNER.

(over)

DATA SHOWN HERE ON
CERTIFIED CORRECT:

James R. Grothman
Registered Land Surveyor

DATE: 7/19/79

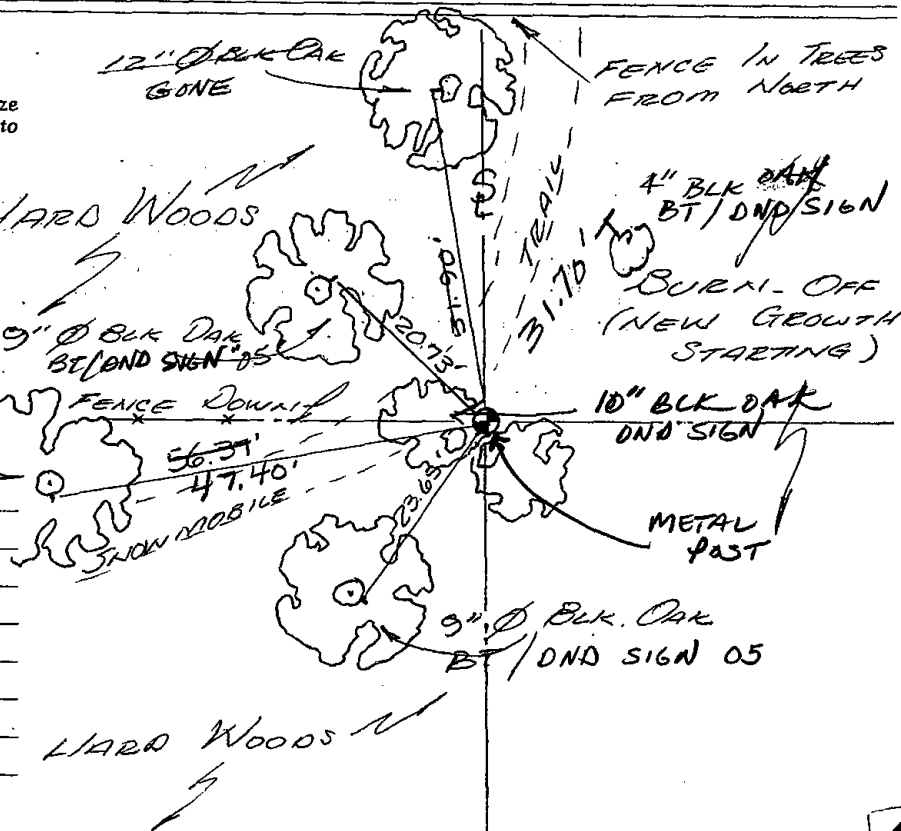
TIE SKETCH

Show at least four ties, also fence lines, roads, topo, size and type of witness trees' and if off road - best way to arrive at corner.

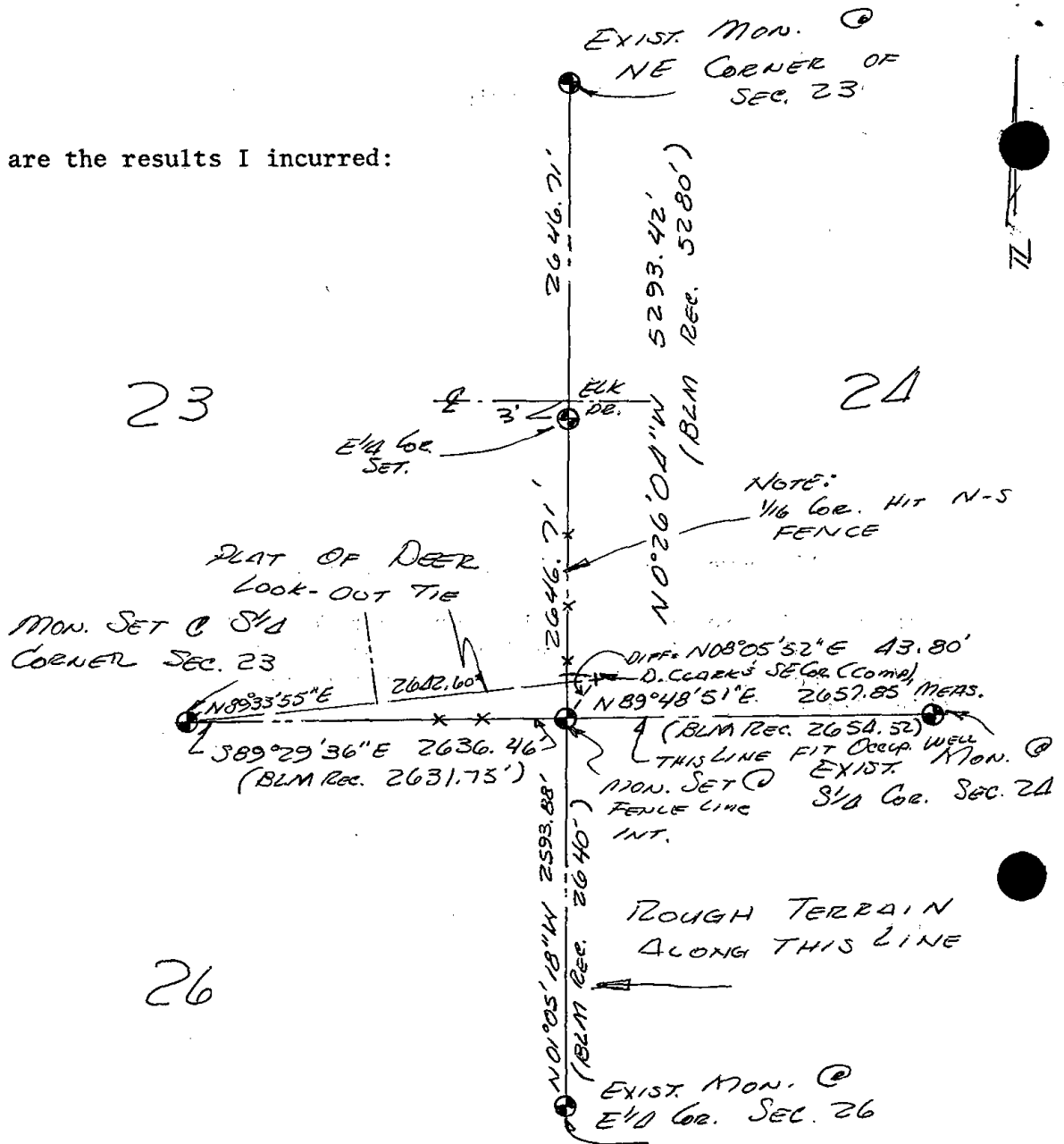
NOTE: ALL TIES TO
TREES ARE TO
60° S.P.K.

MAINTENANCE RECORD

Date	Init.	Remarks
10/20/80	KU-SK	COR OK
10-31-85	MR-SS	OK
2-7-90	GR	OK
1/31/95	CR-JG	OK
12-08-00	JG	1-GONE 1-NEW MDN. OK
4-5-05	JG	1-GONE, 1-NEW
3-22-10	SS	OK



Shown below are the results I incurred:



I also reviewed the location of this corner with Cliff Morgan, a long-time resident of this area. He mentioned he could remember a bearing tree being near the corner. We visited the location together and could not find this bearing tree. He also thought the corner was near or at the fence line intersection that now existed. Monumented this fence line intersection July 11, 1979.

Set Harrison July 11, 1979.