

PUBLIC LAND SURVEY MONUMENT RECORD

TYPE OF MONUMENT: HARRISON
ADAMS COUNTY COORDINATES, NAD 83 (2007)

N. 175243.190

E. 557690.161

ELEVATION- DATUM

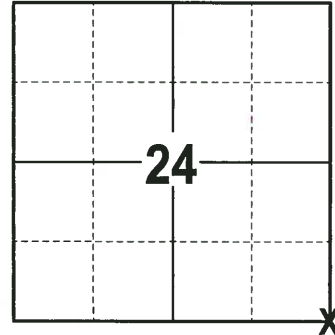
FIELD WORK DATE: 11/16/2017

BASIS FOR MONUMENT LOCATION

1974 - PLS 776 AREA WAS MACHINE EXCAVATED AND NOTHING WAS FOUND. DISTANCE WAS CHECKED BY E.D.M., SET A HARRISON MONUMENT AT THE CORNER LOCATION AND TIED OUT.

1999 - PLS 1397 EXISTING MONUMENT WAS FOUND AT THE CORNER LOCATION. MONUMENT WAS REMOVED AND RAISED DUE TO RECONSTRUCTION OF C.T.H. B. CORNER WAS RE-TIED.

2017 - PLS 2994 FOUND A HARRISON MONUMENT 6" BELOW THE ROAD SURFACE, 1 ADDITIONAL PROPERTY IRON AND 1 WITNESS. THE MONUMENT AGREES WITH THE WITNESS. ACCEPTED THE HARRISON MONUMENT AS THE CORNER LOCATION. SET 3 NEW TIES AND MEASURED TO THE TIES, PROPERTY IRON AND WITNESS.



LOCATION
(INDICATE CORNER BY "X")

SEAL:



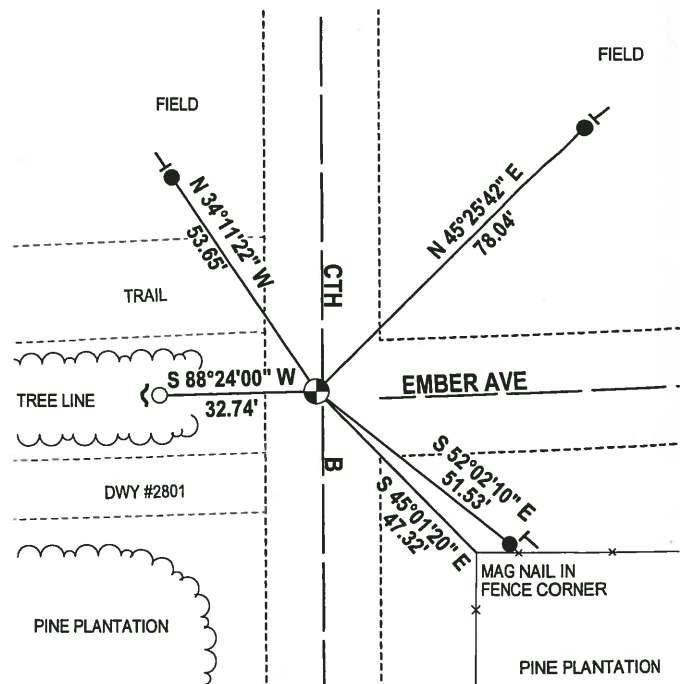
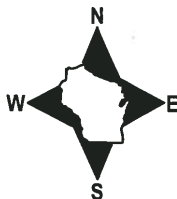
DATA SHOWN HERE ON THIS TIE SHEET IS CORRECT AND COMPLETE TO THE BEST OF MY KNOWLEDGE AND BELIEF.

PROFESSIONAL LAND SURVEYOR

DATE 12-4-17

- TIE SKETCH -

NOTE: THE CORNER FALLS 1± WEST OF THE CENTERLINE OF CTH B AND 2± NORTH OF THE CENTERLINE EMBER AVE..



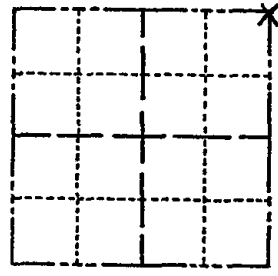
- 3/4" x 18" IRON REBAR SET, 1.50#/FT
- 3/4" CAPPED IRON ROD FOUND
- ⊕ HARRISON FOUND
- ✓ STEEL FENCE POST
- ┌ VINYL "T" POST

ADAMS COUNTY

Survey Monument Record

TYPE OF MONUMENT: HARRISON
STATE PLANE COORDINATES: N _____
E _____
ELEVATION — M.S.L. DATUM: _____
THETA ANGLE: _____
FIELD BOOK: ADAMS PAGE FILE

CORNER NO. 532
SECTION 25
TOWN 16
RANGE 6



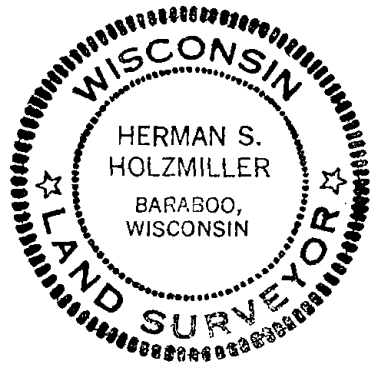
LOCATION
(Indicated by 'X')

BASIS FOR MONUMENT LOCATION

(Use reverse side if necessary)

Show info such as: History of corner, with reference to Vol. and pg, dates, surveyor; exact description of monument replaced; if location computed, by taped or EDM traverse; landowner remarks, etc.

SEAL:



TIES ARE TO BOTTLE CAP
AREA WAS MACHINE EXCAVATED - NOTHING FOUND
DISTANCE CHECKED BY EDM.
TIE MEASUREMENTS ARE HORIZONTAL

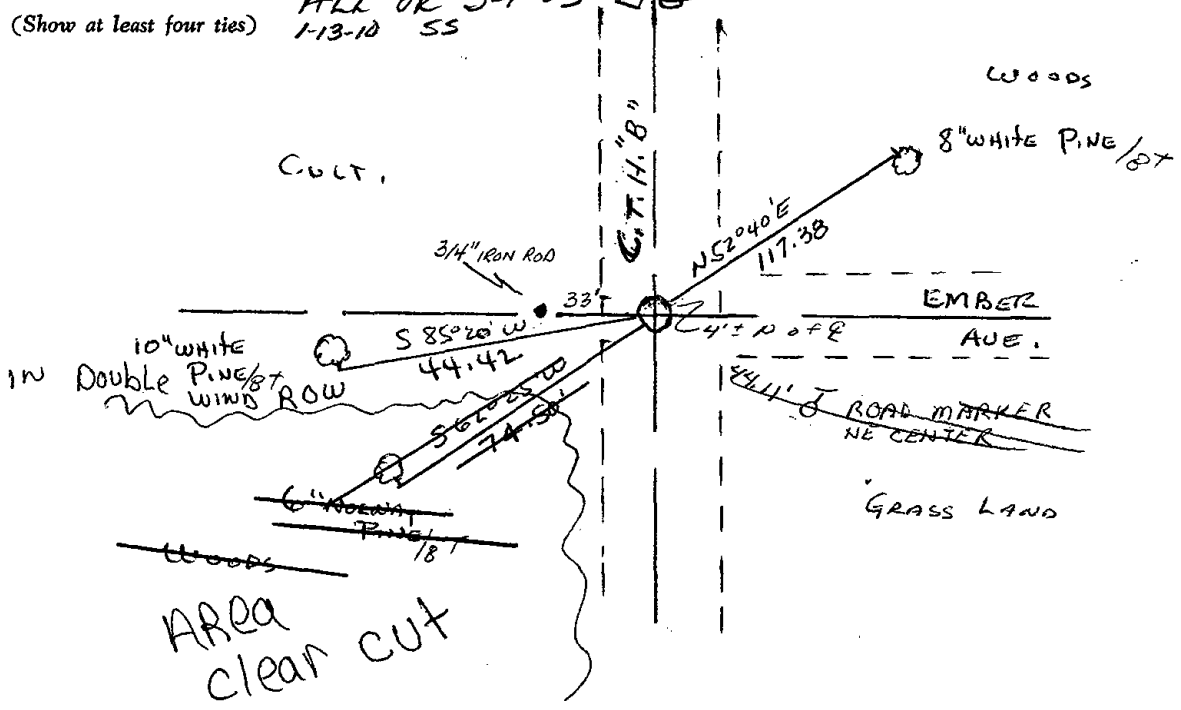
SEE RUSSELL TIE SHEET
7-26-99

COR O.K. 10-14-75 SS
COR OK 10/20/80 KU-SK
1 Gone 7-15-85 DK

CERTIFIED CORRECT:
Herman Holzmilller
Registered Land Surveyor 5-776
DATE: Dec. 16, 1974

TIE SKETCH

ALL OK, SEE ATTACHED TIE SHEET RUSSELL, 7-26-99, JG 9-7-00
ALL OK 3-1-05-16
1-13-10 SS



ADAMS COUNTY

Survey Monument Record

TYPE OF MONUMENT: HARRISON

STATE PLANE COORDINATES: N _____
E _____

ELEVATION — M.S.L. DATUM: _____

THETA ANGLE: _____

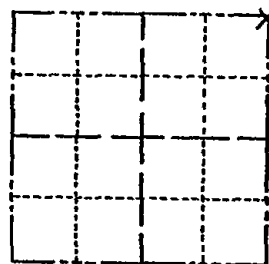
FIELD BOOK: 900005 PAGE FILE

CORNER NO. 532

SECTION 25

TOWN 16

RANGE 6



LOCATION
(Indicated by 'X')

SEAL:



BASIS FOR MONUMENT LOCATION

(Use reverse side if necessary)

Show info such as: History of corner, with reference to Vol. and pg, dates, surveyor; exact description of monument replaced; if location computed, by taped or EDM traverse; landowner remarks, etc.

TIES ARE TO BOTTLE CAP
AREA WAS MACHINE EXCAVATED - NOTHING FOUND
DISTANCE CHECKED BY E.D.M.
THE MEASUREMENTS ARE HORIZONTAL

COR OK 10/11/75 SS
COR OK 10/20/80 KU-SK
1-GONE 7-15-85 DK
1-GONE 1-NEW 1-30-90 GR

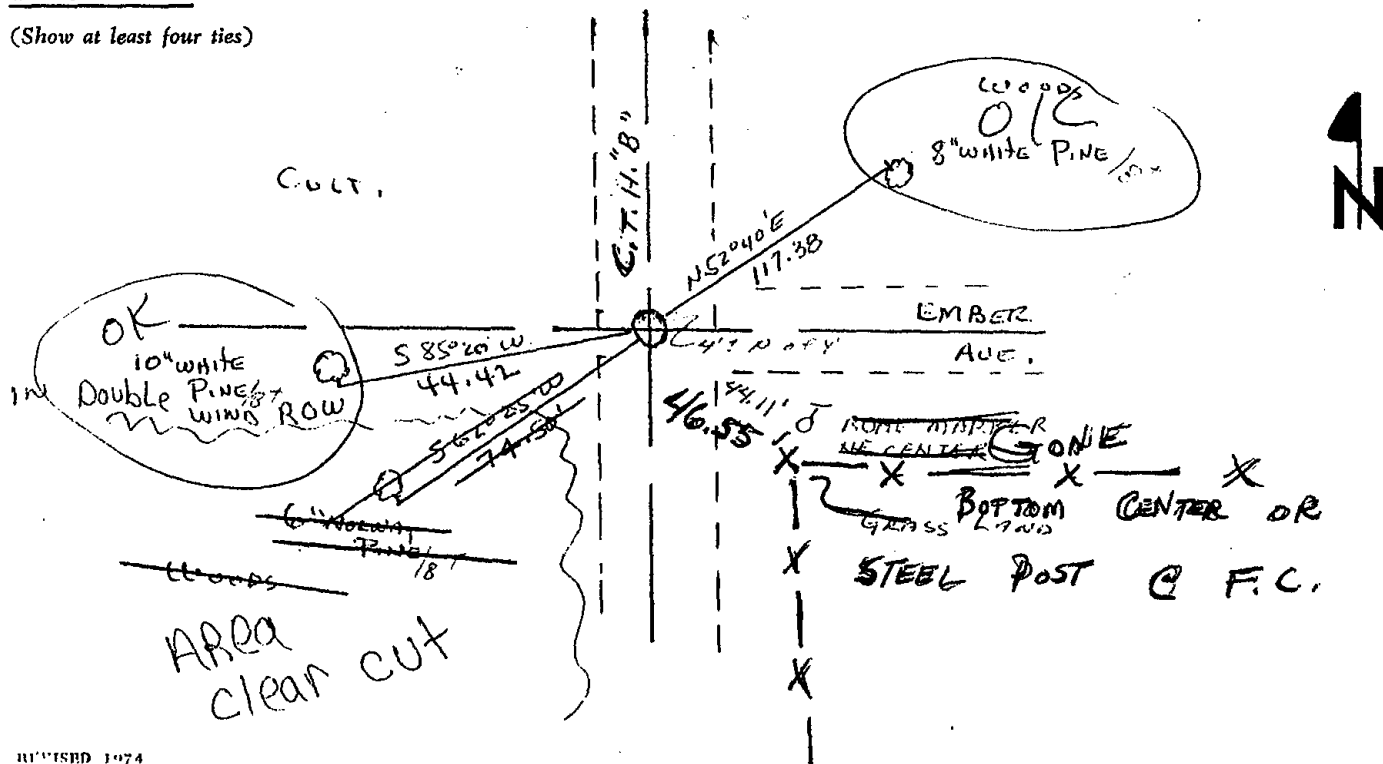
CERTIFIED CORRECT:

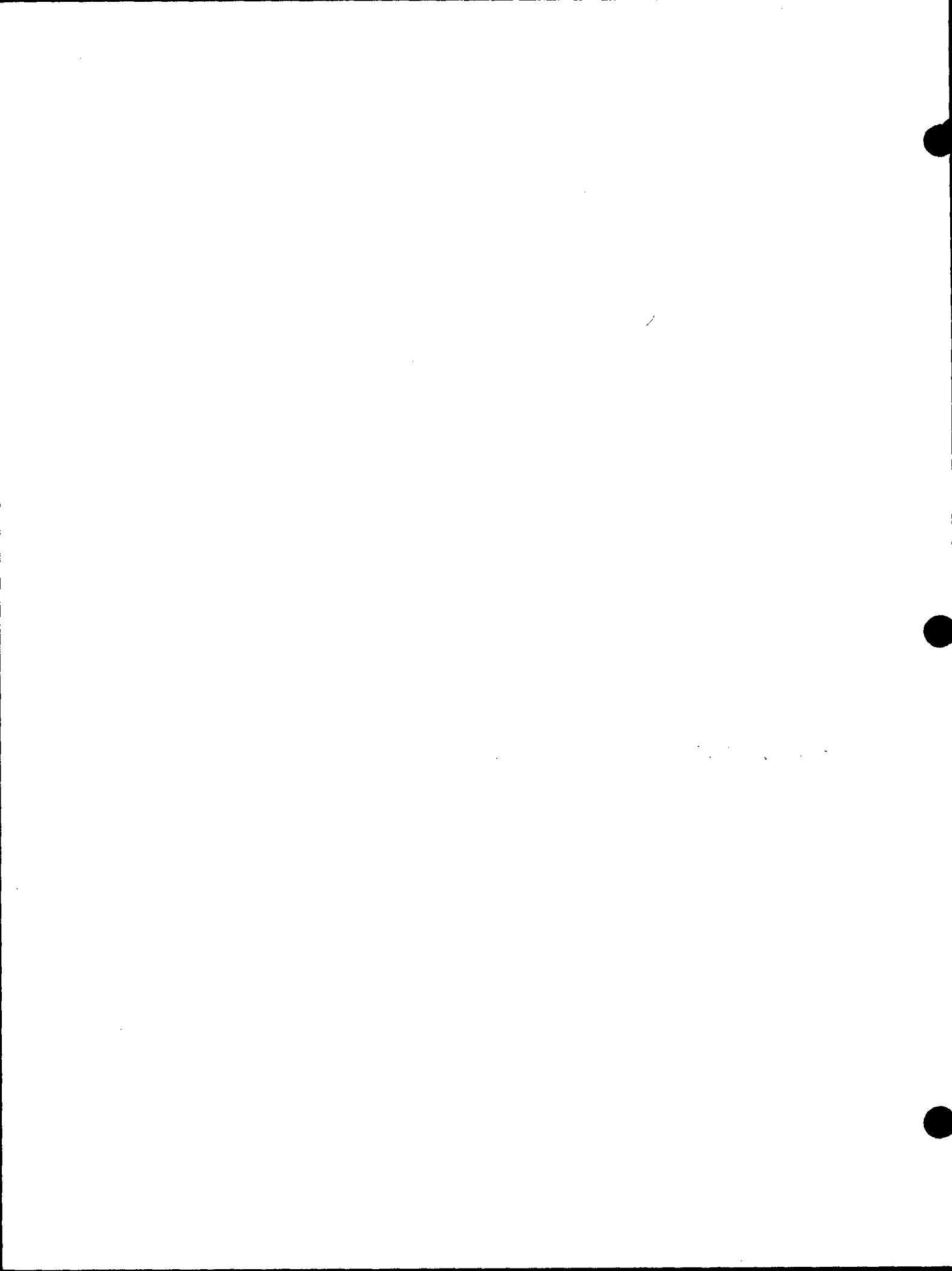
Herman Holzmiller
Registered Land Surveyor 5-776

DATE: Dec. 16, 1974

TIE SKETCH ALL OK 1/23/95 JG-GR

(Show at least four ties)



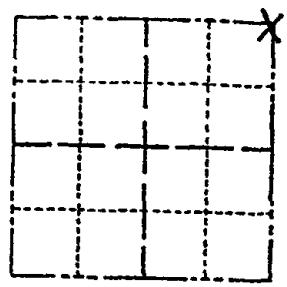


ADAMS COUNTY

Survey Monument Record

TYPE OF MONUMENT: 30" HARRISON MARKER
 STATE PLANE COORDINATES: N _____
 E _____
 ELEVATION — M.S.L. DATUM: _____
 THETA ANGLE: _____
 FIELD BOOK: _____ PAGE _____

CORNER NO. 532
 SECTION 25
 TOWN 16N
 RANGE 6E



LOCATION
(Indicated by 'X')

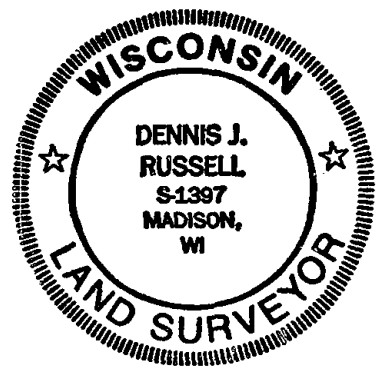
SEAL:

BASIS FOR MONUMENT LOCATION

(Use reverse side if necessary)

Show info such as: History of corner, with reference to Vol. and pg. dates, surveyor; exact description of monument replaced; if location computed, by taped or EDM traverse; landowner remarks, etc.

Existing Monument was found in place. Monument was removed and raised due to reconstruction of C.T.H. "B". All tie measurements are horizontal measurements unless noted otherwise.



CERTIFIED CORRECT:
Dennis J. Russell
 Registered Land Surveyor
 DATE: July 26, 1999

TIE SKETCH

(Show at least four ties)

ALL MEASUREMENTS ARE HORIZONTAL.

