

PUBLIC LAND SURVEY MONUMENT RECORD

TYPE OF MONUMENT: BERNTSEN SNM1 SURVEY NAIL
 ADAMS COUNTY COORDINATES, NAD 83 (2007)

N. 172616.995

E. 531261.911

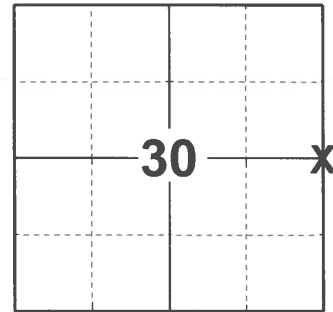
ELEVATION- DATUM

FIELD WORK DATE: 12/08/2020

BASIS FOR MONUMENT LOCATION

2013 - PLS 1452 FOUND A "PK" NAIL.

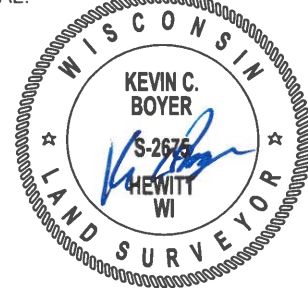
2020 - PLS 2675 FOUND BERNTSEN SURVEY NAIL IN THE ROAD SURFACE AND 4 TIES. THE MONUMENT AGREES WITH ALL 4 TIES. ACCEPTED THE BERNTSEN SURVEY NAIL AS THE CORNER LOCATION AND MEASURED TO ALL 4 EXISTING TIES.



LOCATION

(INDICATE CORNER BY "X")

SEAL:



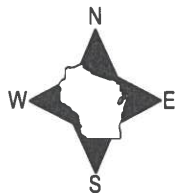
DATA SHOWN HERE ON THIS TIE SHEET IS CORRECT AND COMPLETE TO THE BEST OF MY KNOWLEDGE AND BELIEF.

PROFESSIONAL LAND SURVEYOR

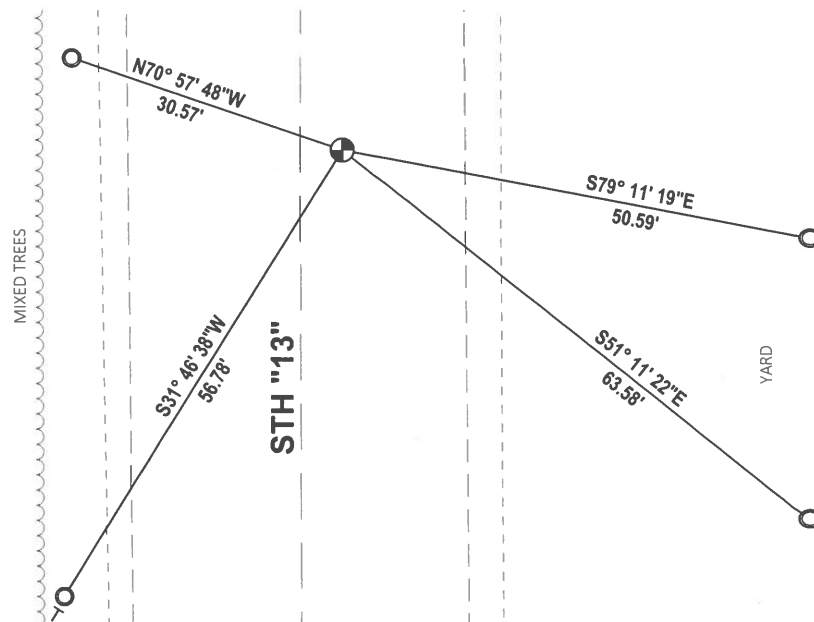
DATE 11/18/2022

TIE SKETCH

NOTE: THE CORNER LANDS 4.5± EAST OF CENTERLINE OF STH "13".



- FOUND BERNTSEN MONUMENT A2BR30
- ⊕ FOUND BERNTSEN SURVEY NAIL FOUND
- ┊ VINYL "T" POST

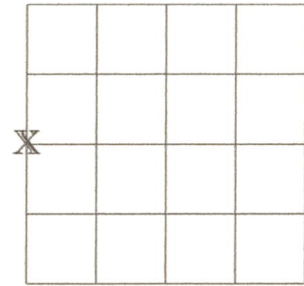


ADAMS COUNTY U.S. PUBLIC LAND SURVEY MONUMENT LOCATION RECORD

- FOUND
- SET
- RE-SET
- RE-TIED

CORNER # 95
 SECTION 29
 TOWNSHIP 16 NORTH
 RANGE 6 EAST

SECTION 29

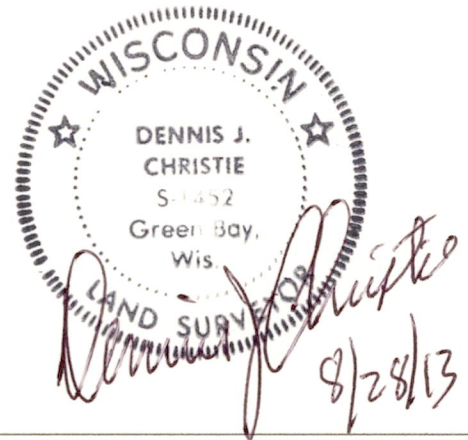


LANDMARK BENCHMARK _____
 CORNER IDENTITY BERNTSEN SURVEY NAIL SET
 COUNTY COORDINATES: N. 172,617.28
 E. 531,262.06
 ELEVATION _____
 WEATHER _____
 DATE OF SURVEY June 24, 2013
 SURVEY PARTY Dennis J. Christie, RLS

BASIS FOR MONUMENT LOCATION:

(DESCRIBE METHOD OF SURVEY AND CORNER AUTHENTICATION)

"PK" NAIL FOUND



TIE SKETCH:

SHOW MINIMUM OF FOUR (4) HORIZONTAL TIE DISTANCES TO FIXED WITNESS MONUMENTS.
 DESCRIBE ALL MONUMENTS FOUND OR SET.

DRAWING IS NOT TO SCALE.

LEGEND

- BERNTSEN SURVEY NAIL SET
- BERNTSEN MONUMENT A2BR30 SET

