

28  
SECTION

16  
TOWN

06  
RANGE

# ADAMS COUNTY

COUNTY CORNER NO: 107

ROMPORTOL ID: 41606280000

## PUBLIC LAND SURVEY MONUMENT RECORD

TYPE OF MONUMENT: HARRISON  
ADAMS COUNTY COORDINATES, NAD 83 (2007)

N. 169926.150

E. 541808.767

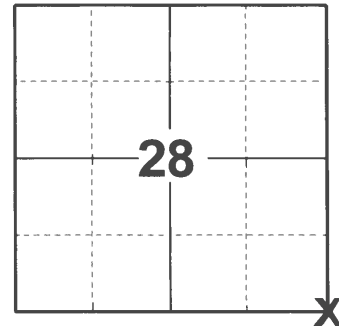
ELEVATION-      DATUM     

FIELD WORK DATE: 11/23/2020

### BASIS FOR MONUMENT LOCATION

1974 - PLS 878 EXCAVATED WITH BACKHOE. FOUND SQUARE STAIN IN SOIL WITH REMNANTS OF BROKEN SANDSTONE IN IT. REPLACED SAME WITH HARRISON. THERE ARE NO RESURVEY OF RECORD ON THIS CORNER.

2020 - PLS 2675 FOUND HARRISON 8"± BELOW THE ROAD SURFACE AND 2 TIES. THE MONUMENT AGREES WITH BOTH TIES. ACCEPTED THE HARRISON AS THE CORNER LOCATION. SET 1 NEW TIE AND MEASURED TO A FOUND PROPERTY IRON AND THE EXISTING TIES.



LOCATION

(INDICATE CORNER BY "X")

SEAL:



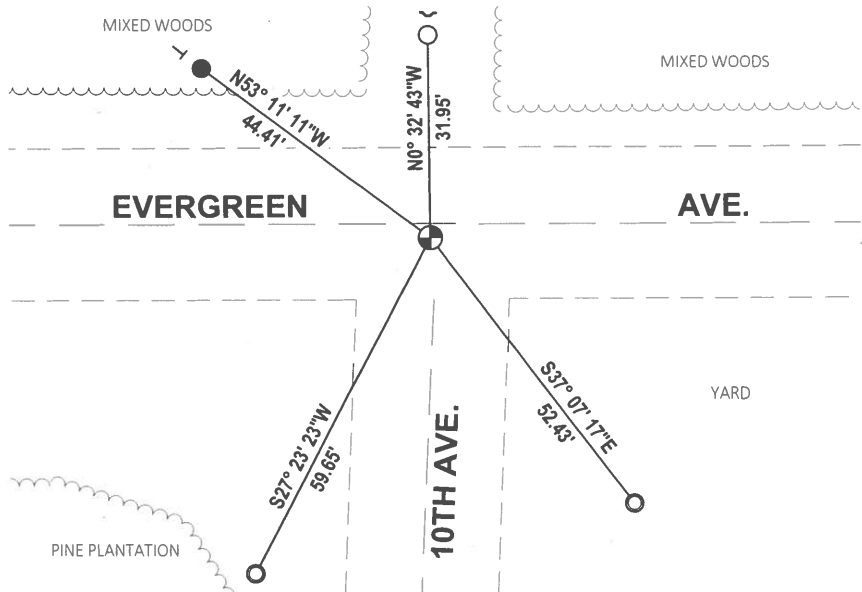
DATA SHOWN HERE ON THIS TIE SHEET IS CORRECT AND COMPLETE TO THE BEST OF MY KNOWLEDGE AND BELIEF.

PROFESSIONAL LAND SURVEYOR

DATE 12/3/2020

### - TIE SKETCH

NOTE: THE CORNER LANDS 2'± SOUTH OF EVERGREEN AVE.



- SET 3/4" x 18" IRON REBAR, 1.50#/FT
- FOUND 3/4" IRON ROD
- FOUND 1-1/4" O.D. IRON PIPE
- ⊙ FOUND HARRISON MONUMENT
- ↘ STEEL FENCE POST
- ┌ VINYL "T" POST

ADAMS COUNTY

Survey Monument Record

TYPE OF MONUMENT: HARRISON

STATE PLANE COORDINATES: N \_\_\_\_\_

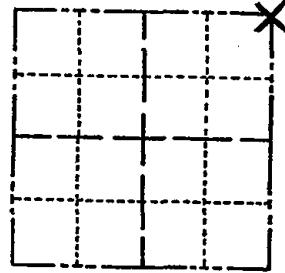
E \_\_\_\_\_

ELEVATION — M.S.L. DATUM: \_\_\_\_\_

THETA ANGLE: \_\_\_\_\_

FIELD BOOK: \_\_\_\_\_ PAGE \_\_\_\_\_

CORNER NO. 648 <sup>(107)</sup>  
SECTION 33  
TOWN 16  
RANGE 6



LOCATION  
(Indicated by 'X')

SEAL:



BASIS FOR MONUMENT LOCATION

(Use reverse side if necessary)

Show info such as: History of corner, with reference to Vol. and pg, dates, surveyor; exact description of monument replaced; if location computed, by taped or EDM traverse; landowner remarks, etc.

Excavated with backhoe. Found square stain in soil with remnants of broken sandstone in it. Replaced same with Harrison.

There are no resurveys of record on this corner.

O.K. 10-31-85 MB-SS  
OK 2-12-90 K2-CR  
ALL OK 1-9-95 JG-AS  
OK 2-12-90 SS  
2-GONE, 1-NEW, 2-24-05 - JG

Cor. O.F. 10-14-75 SS  
1-NEW 1-14-10 SS

CERTIFIED CORRECT:

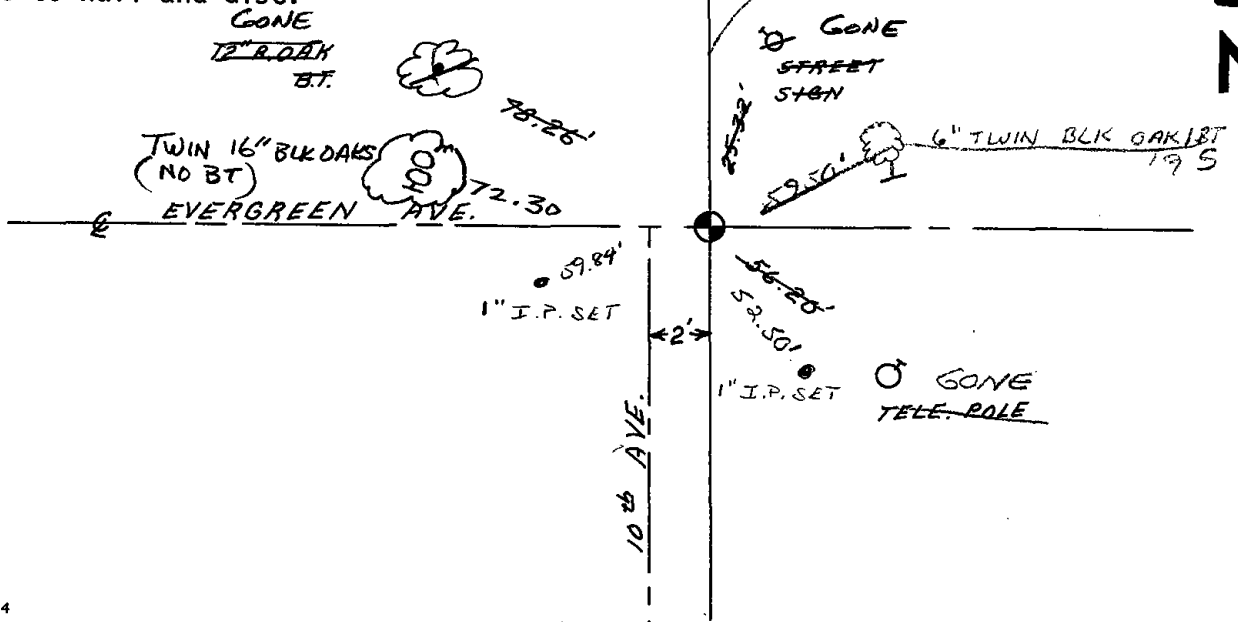
*Anthony B. Kiedrowski*  
Registered Land Surveyor

DATE: Oct. '74

TIE SKETCH

(Show at least four ties)

Ties are to nail and disc.



10/10/10

10/10/10

10/10/10