

PUBLIC LAND SURVEY MONUMENT RECORD

TYPE OF MONUMENT: 1-1/4" IRON ROD
 ADAMS COUNTY COORDINATES, NAD 83 (2007)

N. 169974.380

E. 555061.160

ELEVATION- _____ DATUM _____

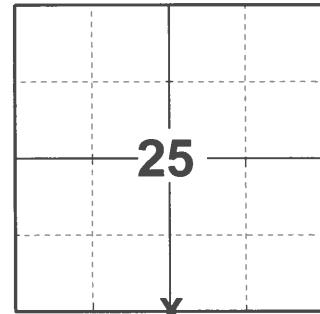
FIELD WORK DATE: 11/18/2020

BASIS FOR MONUMENT LOCATION

1974 - PLS 776 TIES ARE TO 20# SPIKE. NO EVIDENCE OF CORNER FOUND. SET IN LINE BETWEEN SE AND SW CORNERS. TIE MEASUREMENTS ARE HORIZONTAL. DISTANCE CHECKED BY EDM.

2001 - PLS UNKNOWN SET 1-1/4" IRON ROD IN PLACE OF HARRISON, RETIED.

2020 - PLS 2675 FOUND 1-1/4" IRON ROD 8"± BELOW THE DITCH LINE, 1 TIE, AND 2 WITNESSES. THE MONUMENT AGREES WITH THE TIE AND WITNESSES. ACCEPTED THE 1-1/4" IRON ROD AS THE CORNER LOCATION. SET 3 NEW TIES AND MEASURED TO THE EXISTING TIE AND WITNESSES.



LOCATION

(INDICATE CORNER BY "X")

SEAL:



DATA SHOWN HERE ON THIS TIE SHEET IS CORRECT AND COMPLETE TO THE BEST OF MY KNOWLEDGE AND BELIEF.

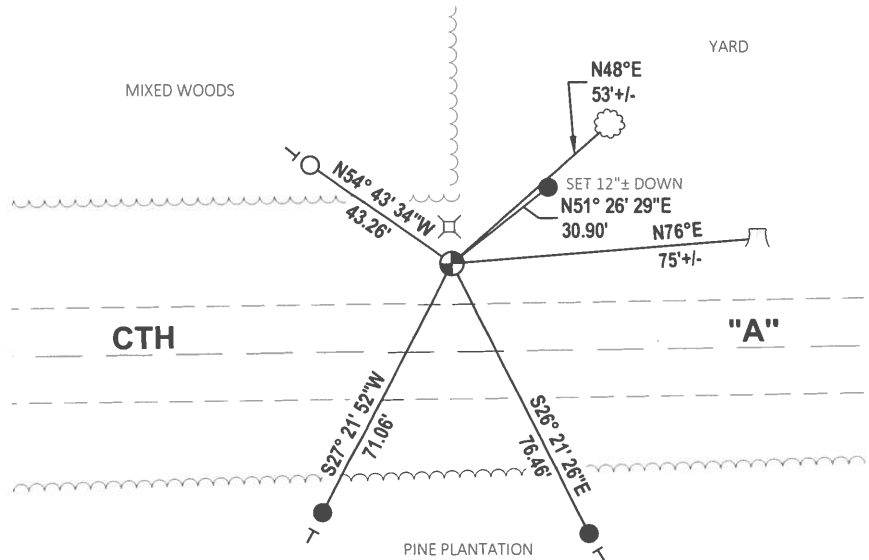
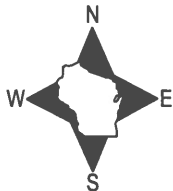
PROFESSIONAL LAND SURVEYOR

DATE 12/3/2020

- TIE SKETCH

NOTE: THE CORNER LANDS 22.5'± NORTH OF CTH "A" CENTERLINE.

NOTE: TELEPHONE PED IS LOCATED 9'± NORTH OF THE CORNER.



- SET 3/4" x 18" IRON REBAR, 1.50#/FT
- FOUND 3/4" IRON ROD
- ⊕ FOUND 1-1/4" IRON ROD MONUMENT
- ┆ VINYL "T" POST
- ☼ WITNESS TREE
- ⌘ WITNESS STUMP

ADAMS COUNTY

Survey Monument Record

TYPE OF MONUMENT: HARRISON SET 1 1/4" ROD

STATE PLANE COORDINATES: N _____

E _____

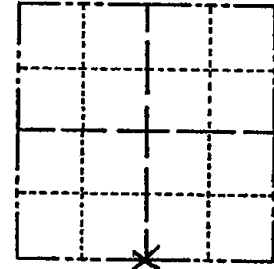
ELEVATION — M.S.L. DATUM: _____

THETA ANGLE: _____

FIELD BOOK: ADAMS PAGE FILE

CORNER NO. 530
 SECTION 25
 TOWN 16
 RANGE 6

(112)



LOCATION
(Indicated by 'X')

BASIS FOR MONUMENT LOCATION

(Use reverse side if necessary)

Show info such as: History of corner, with reference to Vol. and pg, dates, surveyor; exact description of monument replaced; if location computed, by taped or EDM traverse; landowner remarks, etc.

SEAL:



TIES ARE TO 20[#] SPIKE
 NO EVIDENCE OF CORNER FOUND
 SET IN LINE BETWEEN SE & SW
 CORNERS,
 TIE MEASUREMENTS ARE HORIZONTAL.
 DISTANCE CHECKED BY G.D.M.

SET 1 1/4" ROD, RETIE 10-29-01

COR. O.K. 10-14-75 SS

COR OK 10/17/80 KU-SK

ALL OK 7-15-85 D.K.

ALL OK 2-12-90 KZ-GR

OK 4-17-90 KEN CARLSON

CERTIFIED CORRECT:

Herman S. Holzmueller
 Registered Land Surveyor 5-776

DATE: 12-16-74

TIE SKETCH ALL OK 1/23/93 JG-GR
 OK 2-21-00 SS

(Show at least four ties)

