

PUBLIC LAND SURVEY MONUMENT RECORD

TYPE OF MONUMENT: HARRISON
ADAMS COUNTY COORDINATES, NAD 83 (2007)

N. 167349.459

E. 531293.269

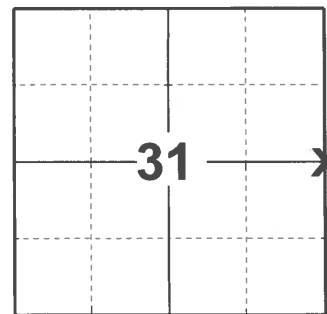
ELEVATION- _____ DATUM _____

FIELD WORK DATE: 11/24/2020

BASIS FOR MONUMENT LOCATION

1975 - PLS 1103 FOUND 12"x12"x8" SANDSTONE AT POSITION SPECIFIED BY THE CONCRETE MONUMENTS IN THE NORTHWEST AND SOUTHWEST QUADRANTS OF THE INTERSECTION. ALSO FOUND 8D SPIKE IN BITUMINOUS PAVEMENT ABOVE STONE. REPLACED STONE WITH HARRISON MONUMENT. LOWERED CONCRETE MONUMENT IN THE SOUTHWEST QUADRANT OF THE INTERSECTION AT THE REQUEST OF GARETH BACON, LAND OWNER, BECAUSE THE MONUMENT IS IN THE LAWN. WITNESSED BY CARL OSBORNE, ADAMS COUNTY HIGHWAY DEPARTMENT EMPLOYEE.

2020 - PLS 2675 FOUND HARRISON 6"± BELOW THE ROAD AND 1 TIE. THE MONUMENT AGREES WITH THE TIE. ACCEPTED THE HARRISON AS THE CORNER LOCATION. SET 2 NEW TIES, MEASURED TO A FOUND PROPERTY IRON, AND THE EXISTING TIE.



LOCATION
(INDICATE CORNER BY "X")

SEAL:



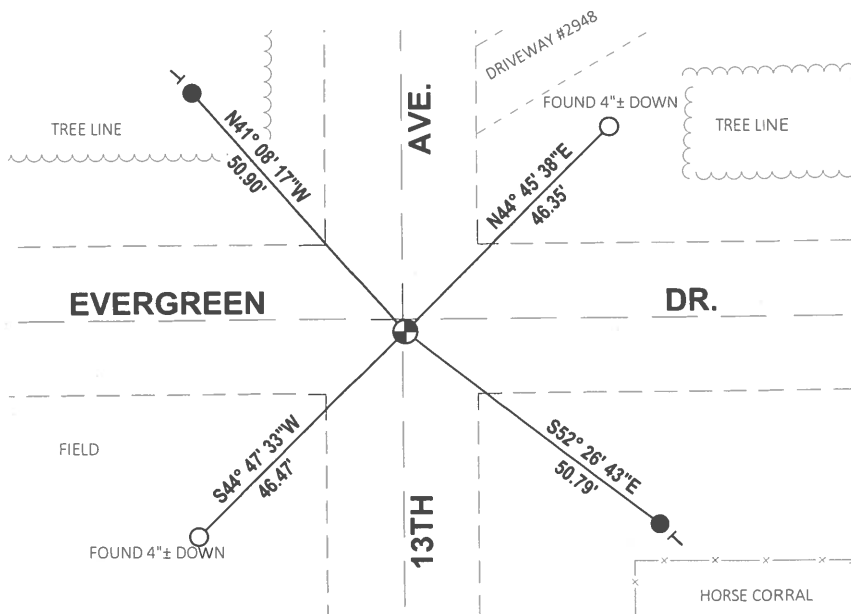
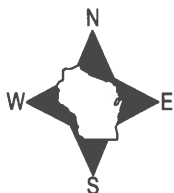
DATA SHOWN HERE ON THIS TIE SHEET IS CORRECT AND COMPLETE TO THE BEST OF MY KNOWLEDGE AND BELIEF.

PROFESSIONAL LAND SURVEYOR

DATE 12/3/2020

- TIE SKETCH

NOTE: THE CORNER LANDS 0.3'± EAST OF 13TH AVE. CENTERLINE AND 2'± SOUTH OF EVERGREEN DR. CENTERLINE.



- SET 3/4" x 18" IRON REBAR, 1.50#/FT
- FOUND 3/4" IRON ROD
- ⊕ FOUND HARRISON MONUMENT
- VINYL "T" POST

ADAMS COUNTY

Survey Monument Record

TYPE OF MONUMENT: STANDARD HARRISON

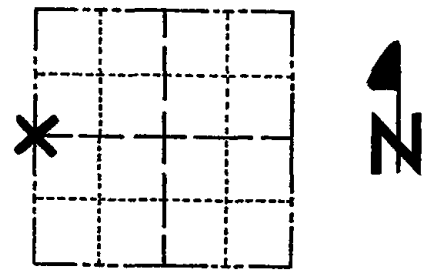
STATE PLANE COORDINATES: N _____ E _____

ELEVATION — M.S.L. DATUM: _____

THETA ANGLE: _____

FIELD BOOK: _____ PAGE _____

CORNER NO. 703
SECTION 32
TOWN 16
RANGE 6



LOCATION (Indicated by 'X')

SEAL:

BASIS FOR MONUMENT LOCATION

(Use reverse side if necessary)

Show info such as: History of corner, with reference to Vol. and pg, dates, surveyor; exact description of monument replaced; if location computed, by taped or EDM traverse; landowner remarks, etc.

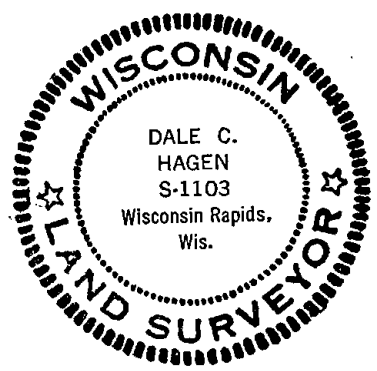
Found 12" x 12" x 8" Sandstone at position specified by the concrete monuments in the Northwest and Southwest quadrants of the intersection. Also found 8d spike in bituminous pavement above stone.

Replaced stone with Harrison Monument.

Lowered concrete monument in the Southwest quadrant of the intersection at the request of Gareth Bacon, land owner, because the monument in is the lawn.

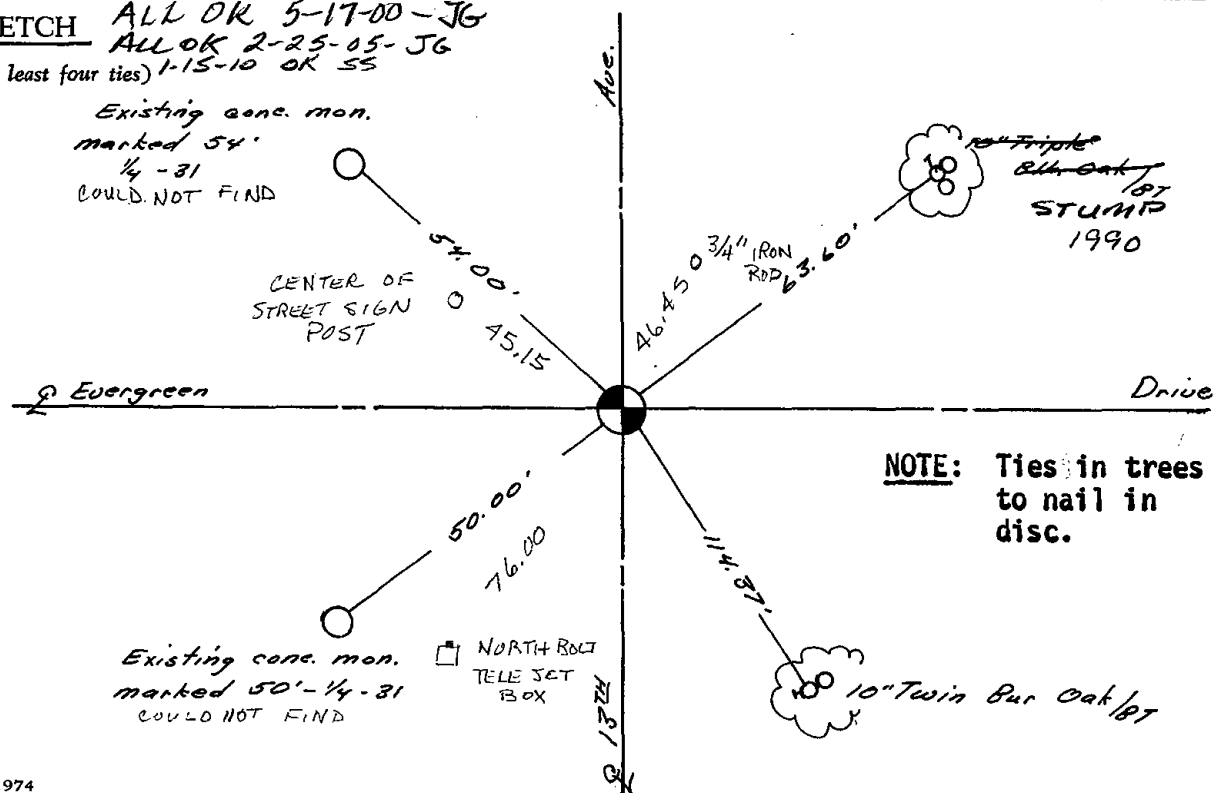
Witnessed by Carl Osborne, Adams County Highway Department employee.

COR OK 10/17/80 KV-SK
ALL OK 6-26-85 GR-SS
OK 1-30-90 GR
3-NEW 8-25-94 JG-BS



CERTIFIED CORRECT:
Dale Hagen
Registered Land Surveyor
DATE: June 24, 1975

TIE SKETCH ALL OK 5-17-00-JG
ALL OK 2-25-05-JG
(Show at least four ties) 1-15-10 OK SS



NOTE: Ties in trees to nail in disc.